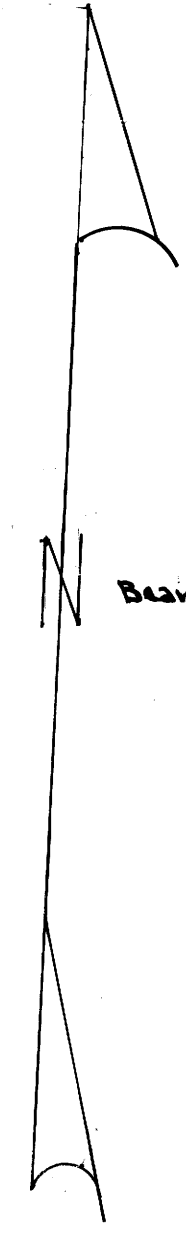
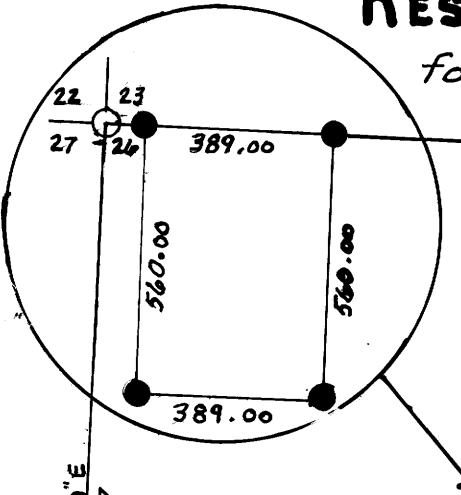


# RESURVEY AND Subdivision of Section 26, T30S, R7W, W.M., OREGON

Scale 1" = 400'

December 30, 1982

- LEGEND**
- Monument Found
  - Set 3/8" IR & Alum. Cap Marked "LS 498"
  - Property Line
  - ( ) Line Marked with Tags
  - ( ) Record Data



I ran a closed traverse in Section 26 using a Jena 1 second theodolite and a Mac 1-E EDM. I achieved a precision of 1:22,288 and adjusted the traverse by the Crandall method. I set the corners by standard subdivision procedure based on the location of the existing monuments. (1980 CASUALTY INFORMATION NOT IN RECORD)  
Howard W. Johnstone P.O. Box 1088 Roseburg, Oregon

REGISTERED PROFESSIONAL LAND SURVEYOR  
*Howard W. Johnstone*  
OREGON MAY 19, 1960  
HOWARD W. JOHNSTONE  
498



N 1/4 Corner  
Set 3/8 x 3/8" IR & Alum. Cap  
Marked "N 1/4 27/26"  
BTS: 5" Fir 57°E 26 1/2  
9" Oak N 16°E 53 1/2

1/4 Corner  
Fd. 1980 Cedar/BCIP  
BTS: 8" Pine S 35°E 128 1/2  
10" Pine S 80°W 115 1/2  
13" Fir S 4 1/2°W 76 1/2  
17" Pine S 25 1/2°E 96 1/2

Section Corner  
Fd. 1980 Cedar/BCIP  
BTS: 8" Cedar S 63 1/2°E 187 1/2  
10" Fir N 4 1/2°W 76 1/2  
14" Fir S 66°W 178 1/2  
26" Cedar N 48°E 258 1/2

Set 3/8 x 3/8" IR Alum. Cap  
Marked "101 1982"  
R.P. 3" Fir S 44°E 6 1/2

Set 3/8 x 3/8" IR Alum. Cap  
Marked "102 1982"  
R.P. 3" Fir S 44°E 6 1/2

Set 3/8 x 3/8" IR Alum. Cap  
Marked "104 1982"  
R.P. 3" Fir S 44°E 18 1/2

Set 3/8 x 3/8" IR Alum. Cap  
Marked "103 1982"  
R.P. 14" Fir S 66°W 7 1/2

Section Corner  
Fd. 1971 Cedar/BCIP  
BTS: 20" Fir Stump N 15°E 35'  
32" Cedar Stump N 15°E 27'  
10" Fir Stump N 15 1/2°W 29'  
8" Fir S 53 1/2°W 123 1/2

1/4 Corner  
Fd. 1971 BCIP  
BTS: 16" Pine S 25°E 41 1/2  
18" Pine S 47 1/2°W 62 1/2

S 1/4 Corner  
Fd. 1971 BCIP  
BTS: 21" Pine S 46°E 32 1/2  
11" Pine S 39 3/4°W 4 1/2

Section Corner  
Fd. 1963 County BCIP  
BTS: 24" Fir S 44°E N 15°W 15 1/2  
15" Fir S 44°E S 44 1/2°E 83 1/2  
25" Live Oak S 64 1/2°W 17 1/2  
8" Live Oak N 20°W 34 1/2

W 1/4 Corner  
Fd. 1977 BCIP  
BTS: 15" Fir N 23 1/2°E 11 1/2  
16" Fir S 4 1/2°E 17 1/2

1/4 Corner  
Fd. 1977 BCIP  
BTS: 12" Fir N 4 1/2°E 18 1/2  
7" Fir S 45 3/4°E 18 1/2

E 1/4 Corner  
Fd. 1977 BCIP  
BTS: 14" Fir N 42 3/4°E 27 1/2  
25" Pine S 79 3/4°E 33 1/2

Section Corner  
Fd. 1964 County BCIP  
BTS: 35" Fir N 16°W 47 1/2  
10" Live Oak N 21°E 9 1/2  
9" Live Oak S 44°E 11 1/2  
10" Live Oak S 2°E 6 1/2  
11" Oak S 11 1/2°W 28 1/2