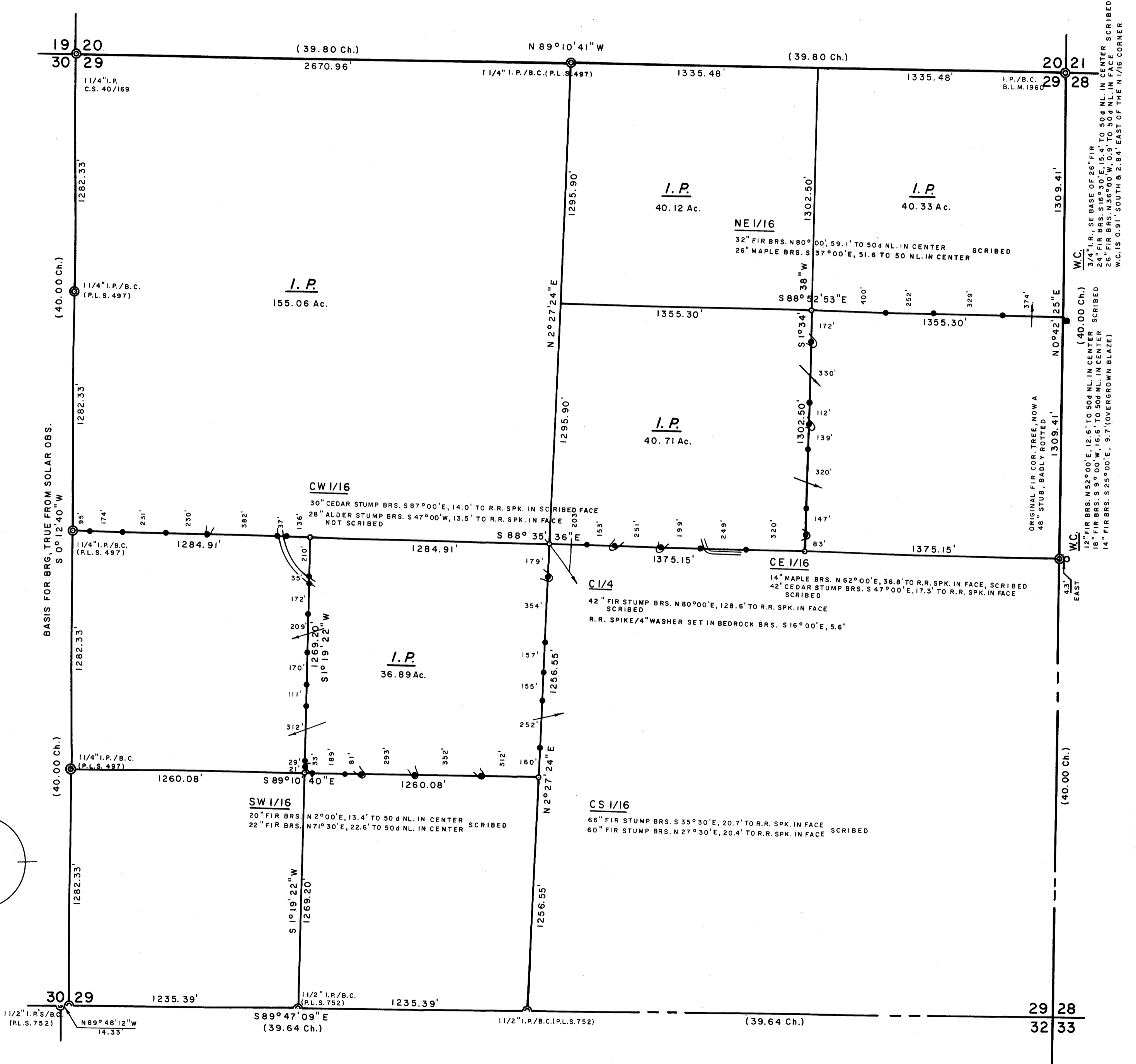


COUNTY SURVEYORS FILE DATA
DO NOT REMOVE FROM OFFICE

AMENDED SURVEY SECTION 29, T21S, R11W FOR INTERNATIONAL PAPER CO. SCALE 1" = 400' DEC. 1982

BS
BS
BS



LEGEND

- CORNERS FOUND ©
- SET 1/4 x 3/16" I.P.'S/STAMPED BRASS CAPS (P.L.S. 497) ○
- PROPERTY LINES ESTABLISHED, 1/2 x 60" I.R.'S WITH ATTACHED ALUMINUM SIGNS ————
- (G.L.O. ORIGINAL SURVEY)
- SET 3/4" I.R. (W/O CAP) ●
- W.C. N1/16 CORNER

NOTES

1. THIS SURVEY WAS MADE TO AMEND SURVEY M 70-74, JUNE 1979. THE ORIGINAL SOUTH 1/4 CORNER OF SECTION 29 WAS FOUND IN 1981 WHICH VOIDED MY PREVIOUS SURVEY. THE MONUMENTS FOR SURVEY M 70-74 WERE REMOVED AND THEIR BEARING TREES OBLITERATED IN ORDER TO AVOID CONFUSION.
2. THE SECTION WAS SUBDIVIDED IN ACCORDANCE WITH THE B.L.M. MANUAL OF SURVEY INSTRUCTIONS.

REGISTERED
PROFESSIONAL
LAND SURVEYOR

Richard J. Hintz

OREGON
MAY 13, 1960
RICHARD J. HINTZ
497

RICHARD J. HINTZ
1890 N. 14th ST.
COOS BAY, OREGON