

FILED *BS*
RECEIVED *BS*
OCT 6 1982
COUNTY SURVEYOR
DOUGLAS COUNTY, ORE.
BS

FD BRASS CAP
N.E. CORNER PLZ. #50

N 48° 30' 34" E 3268.06'
FP 5/8" IRON ROD

NARRATIVE:

SURVEY BY D. BENTZ, G. LANG & N. HIBBS TO ESTABLISH AN 8+ ACRE PARCEL (SEE NOTE). INSTRUMENTS USED: WILD T-1 THEODOLITE & REPT. E.D.M. THREE MONUMENTS WERE FOUND AND USED OFFICE COMPUTATIONS BY D. BENTZ. DRAFTING BY D. HOPKINS. MONUMENTS FOUND PER M 56-4.

NOTE:

SURVEY TO ESTABLISH A PARCEL FOR NEGOTIATIONS ONLY, NOT FOR SEPARATING BY LAND TRANSACTION. LINES WERE ESTABLISHED TO CLEARLY DEPICT PARCEL AND IMPROVEMENTS THEREIN; SHOULD NEGOTIATIONS BE FRUITFUL, FULL M.L.P. APPLICATION, SURVEY, ZONE CHANGE, ETC., WILL BE PURSUED.

SCALE: 1" = 100'

SEPTEMBER 1982

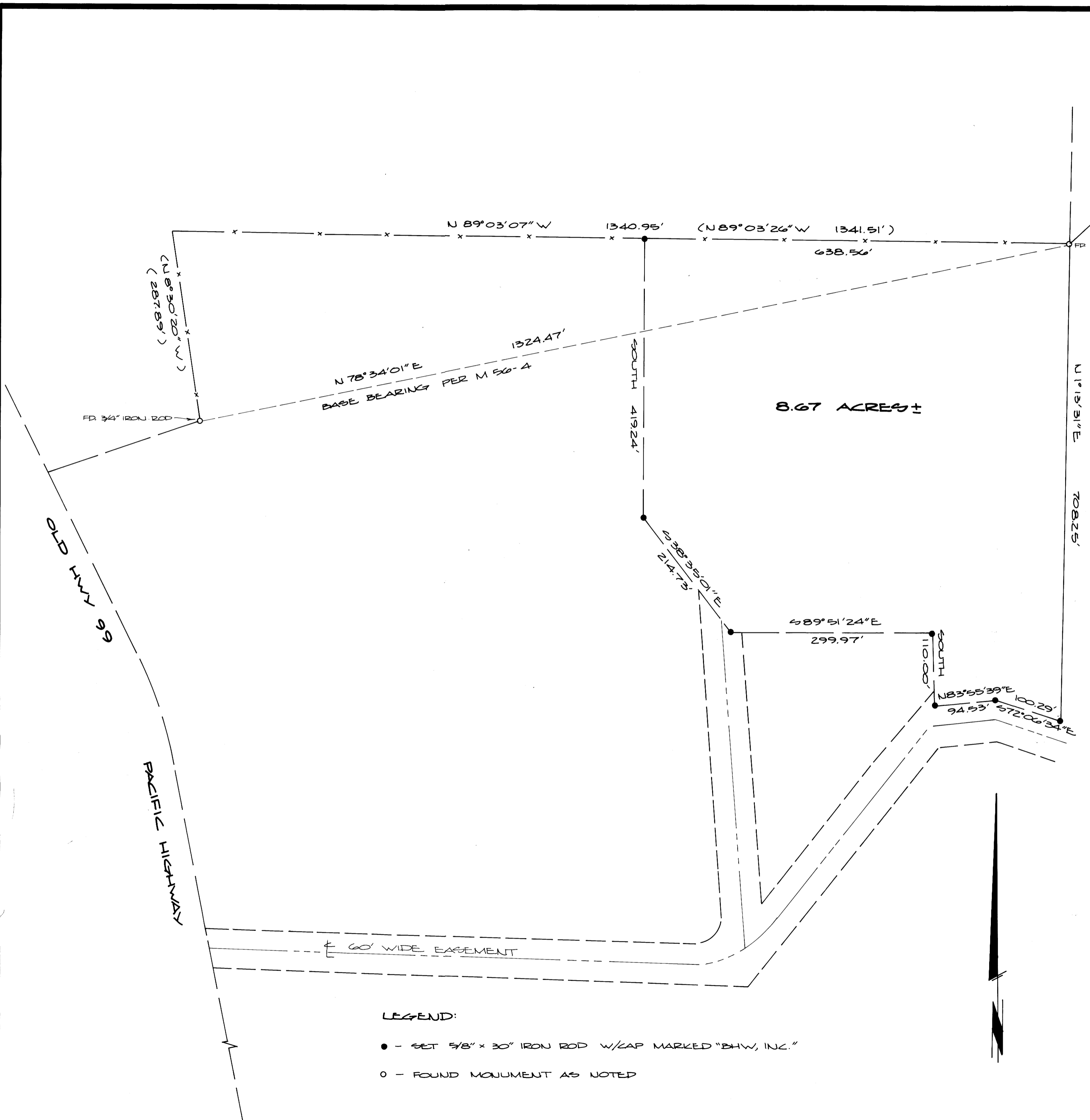
REGISTERED
PROFESSIONAL
LAND SURVEYOR

OREGON
JULY 12, 1969
DONALD A. BENTZ
839

SURVEY FOR FRANCIS ENGLE
LYING IN
SE. 1/4, SECTION 30, T26S, R6W, W.M.
& S.W. 1/4, SECTION 31, T26S, R5W, W.M.

By: **BHW ENGINEERING, INC.**
1205 SE. COURT-ROSEBURG, ORE.
(503) 673-0165

COUNTY SURVEYORS FILE DATA
DO NOT REMOVE FROM OFFICE



LEGEND:

- - SET 5/8" x 30" IRON ROD W/CAP MARKED "BHW, INC."
- - FOUND MONUMENT AS NOTED