

① 1/4 CORNER S5/S8

Found 1967 Douglas Co. BCIP and the following accessories:
21" double cedar stump (most westerly) bears N23° E, 46.7' (1967)
No scribing visible. Set 8" nail in top, center of westerly stump.
27" maple bears S21°E, 57.3' (1967) No scribing visible.

② 1/4 CORNER S7/S8

Found 1982 BCIP (PLS 497) with the following accessories:
31" fir stump bears N58°W, 3.1' (Record - West, 2.6') (1891)
Scribe marks visible on old face
9" alder bears N34°E (Record - N30-1/2°E), 15.3' (1982) Scribed: 1/4 S8 BT
Remains of original cedar BT roots bear East, approx. 4'.

③ 1/4 CORNER S8/S9

Found 1967 Douglas Co. BCIP with the following accessories:
9" alder bears N25°E, 42.2' (1967) Scribing visible
16" hemlock bears N8°W, 103.3' (1967)
No scribing visible
9" fir bears N87°W, 20.4' (1982)
Scribed: 1/4 S8 CS BT
7" fir bears S6°E, 13.4' (1982)
Scribed: 1/4 S9 CS BT

⑧ 1/4 CORNER S8/S17

Found 1965 Douglas Co. BCIP with the following accessories:
19" hemlock bears N35°E, 7.0' (1965)
Scribe marks visible
12" hemlock bears S6°W, 16.3' (1965)
Scribing partially visible

⑨ E 1/16 CORNER S8/S17

Found 1967 Douglas Co. BCIP with the following accessories:
48" fir bears N32°E, 69.5' (1967)
No scribing visible - closed face
6" maple bears S4°E, 46.8' (1967)
Scribing partially visible

⑩ SECTION CORNER S8/S9/S16/S17

Found 1978 Douglas Co. BCIP and a plugged, 1-1/2" I.P., extending 2.8' above ground, on the west edge of the BC, with the following accessories:
28" rotten fir stump bears N74°W, 19.3' (original) (Record - N75°W, 23.1') Scribed: BT
24" rotten fir stump bears N23°E, 10.1' (original) (Record - N30°E, 9.2') No scribing visible
36" fir stump bears S58°W, 16.3' (original) (Record - S55°W, 15.8') Scribed: S17 BT
14" rotten fir stump bears S69°E, 23.6' (original) (Record - S65°E, 24.4') No scribing visible
17" fir snag, 15' tall, bears S41°W, 16.5' (1918)
Chopped, open, rotted blaze
48" fir bears S15°W, 81.7' (Record - S11-1/2°W, 79.6')
X bark scribed alongside healed blaze (1959)
24" fir snag, 18' tall, bears S22°E, 107.4' (1959) (Record - S26°E) Scribe marks visible
18" maple bears S68-1/2°E, 32.7' (Record - 30.3')
Scribed: T2IS R11W S16 CS BT (1978)
21" alder bears N13°W, 52.0' (Record - 52.7')
Bark scribed: T2IS R11W S8 CS BT (1978)
Set: 12" forked alder bears N54°E, 50.6' (1982)
Bark scribed: T2IS R11W S9 BT

⑪ N 1/16 CORNER S18/S17

Set BCIP with the following accessories:
17" fir bears S65°E, 8.1' (1982)
Scribed: N1/16 S17 BT
14" cedar bears S45-1/2°W, 35.8' (1982)
Scribed: N1/16 S18 BT

⑫ NW 1/16 CORNER S17

Set BCIP with the following accessories:
25" fir bears S36°E, 5.4' (1982)
23" hemlock bears S63°W, 42.4' (1982)
Both scribed: NW 1/16 S17 BT

⑬ 1/4 CORNER S18/S17

Found 1949, 1-1/4" I.P. with the following accessories:
13" alder bears S18°W, 10.7' (Record - 11.5')
No scribing visible (1949)
13" cedar bears S75°E, 38.8' Scribing visible (1975)

⑭ CW 1/16 CORNER S17

Set BCIP with the following accessories:
15" cedar bears N80-1/2°E, 14.3' (1982)
17" alder bears N37°W, 10.8' (1982)
Both scribed: CW 1/16 S17 BT

⑮ WC CE 1/16 CORNER S17

Set 2-1/2" brass cap on a 1" x 44" iron pipe on property line. True point of corner falls S88°38'37"E, 138.00' in Smith River. Set the following accessories:
19" spruce bears N3°E, 34.7' (1982)
22" spruce bears N82-1/2°W, 50.4' (1982)
Both scribed: X BT

⑯ 1/4 CORNER S17/S16

Found 1959 Douglas Co. BCIP with the following accessories:
22" fir stump bears N44°W (Record - N48-1/2°W), 7.7'
No scribing visible (1959)
16" fir stump bears S31°E, 5.7' (1959) No scribing visible
27" fir bears N77°E, 15.3' (1974)
Healed blaze - No scribing visible
Set: 24" spruce bears S18°E, 34.3' (1982)
Scribed: W1/4 S16 BT

⑰ SECTION CORNER S18/S17/S20/S19

Found a 1-1/2" I.P., 5" below ground, in an open pasture, with a 1" iron bar driven into it and bent East. Set in 1949. Found the following:
48" spruce bears N27-1/2°E, 73.0' (Record - 72.3') (1949)
Scribed: CS BT at base. No scribing visible in chopped face
A gate post in an E-W fence line bears N52-1/2°W, 140.1' (1949)
28" spruce bears N17°W, 93.3' (Record - 94.6') (1974)
Closed face - no scribing visible

⑱ 1/4 CORNER S17/S20

Set a 2-1/2" brass cap on a 1" x 48" I.P. driven flush with the ground, in an open pasture. Also set the following accessories:
16" alder bears S34°43'E, 222.3' Scribed: N1/4 S20 BT (1982)
16" fir bears S88°58'E, 287.6' Scribed: N1/4 S20 BT (1982)
16" alder bears N46°45'W, 437.8' Scribed: S1/4 S17 BT (1982)
Power pole 10-67 bears N6°28'E, 268.4' (1982)

⑲ SECTION CORNER S17/S16/S21/S20

Found 1970 Douglas Co. BCIP with the following accessories:
48" hemlock snag, 15' tall, bears N77°W, 21.7' (Record - N75°W, 20.5')
Scribe marks visible on opened face (original)
66" cedar bears N65°E, 66.0' (face) Scribed: T2IS R11W S16 CS BT (original)
110" fir bears S12°E (Record - S26-1/2°E), 6.3' (face) (1918)
Bark scribed: T2IS R11W S21 CS BT
73" cedar bears N29°W, 33.5' Scribed: T2IS R11W S17 CS BT (1970)
36" hemlock bears S33°W, 10.9' Scribe marks visible (1970)

LEGEND

- Corner found and used for control
- Corner found and reset in same position this survey
- Corner set this survey
- Property line posted

NOTES

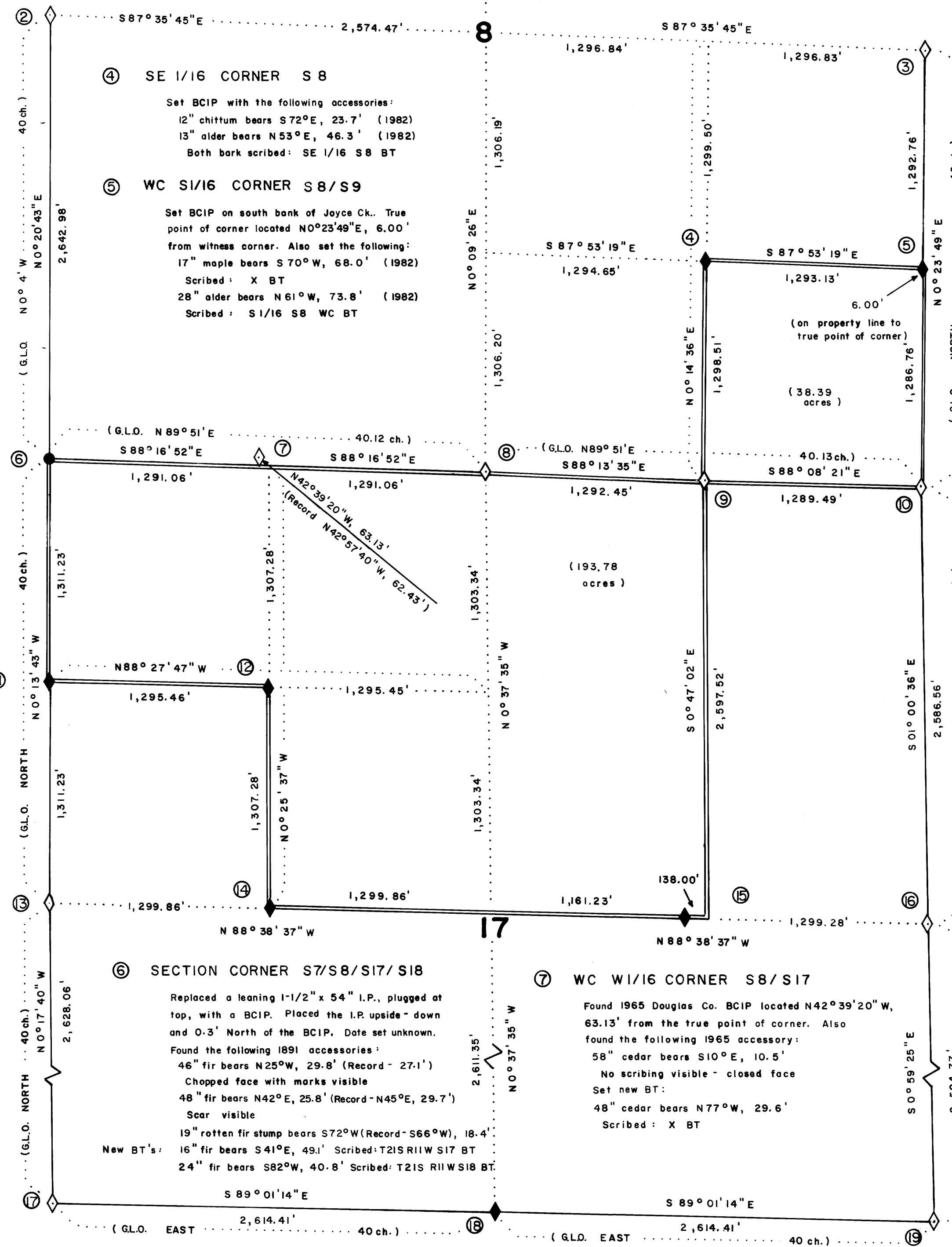
- 1) Basis of Bearing: Solar Observation
- 2) Unless otherwise noted, all monuments set are 2-1/2" brass caps on 2-1/2" x 30" galvanized iron pipes. Each is stamped, PLS 1988.
- 3) Unless otherwise noted, all monuments found are 2-1/2" brass caps on 1-1/2" galvanized iron pipes.
- 4) All bearings to accessories, except those at S1/4 S17, are magnetic; mean magnetic variation = 19°45' E. Angles with a theodolite were turned to the S1/4 S17 accessories, and bearings calculated.
- 5) All distances, except those noted, are measured to the side and center of the tree, 1' above the root crown.
- 6) This survey was conducted using a Jena O20A theodolite, a Mac IE EDM, an AGA 76 Geodimeter, and a 300' steel tape.
- 7) Survey narrative located on separate, type-written page.

REGISTERED
PROFESSIONAL
LAND SURVEYOR
Ronald G. Geisler
OREGON
JULY 18, 1982
RONALD G. GEISLER
1988



SCALE:
1" = 500'

**SURVEY OF
SECTIONS 8 & 17
T2IS, R11W, W.M.
DOUGLAS COUNTY, OREGON**
BY
CHAMPION INTERNATIONAL CORPORATION
NOVEMBER 1982
RGG



M 93-34
58/278(W)

M 93-34

NARRATIVE
FOR
SURVEY PERFORMED IN
SECTIONS 8 and 17, T21S, R11W, W.M.
DOUGLAS COUNTY, OREGON
BY CHAMPION INTERNATIONAL CORPORATION
NOVEMBER 1982

FILED *BS*
RECEIVED *JH*
DEC 22 1982
COUNTY SURVEYOR
DOUGLAS COUNTY, ORE

(SUPPLEMENT TO CORRESPONDING PLAT)

All information and notes on the corresponding plat are a true and accurate representation of a survey I performed during the months of July through November, 1982, to establish the property lines for Champion International Corporation in Sections 8 and 17, T21S, R11W, W.M.

Equipment used in this survey include an AGA 76 Geodimeter, a Jena 020A Theodolite, a Mac IE EDM, and a 300' steel chain.

The basis of bearing for this survey was obtained by a sunshot taken in the control traverse.

Section 17 was originally surveyed in 1867. The West line of Section 17 was again surveyed in 1891 to re-establish the 1/4 Corner and the lost NW section Corner. The position of the W 1/4 Corner Section 17 was set 2.40 chains West of the true corner due to an offset survey line. Section 8 was also originally surveyed in 1891.

Four, 1867 Meander Corners and their accessories, set on the banks of the Smith River along the South and East lines of Section 17, were searched for, but no evidence was found. The Meander Corners were not reset.

Corners found and used for control were set, or re-established, by the Douglas County Surveyor's Office, with the following exceptions:

The W 1/4 Corner Section 8 was set by Richard J. Hintz, P.L.S. 497, in 1982, based on original accessories found.

The SW Corner Section 8 was set in an unrecorded survey at the approximate intersection of three, 1891 accessories found (the I.P. found was replaced in this survey with a BCIP in the same location).

The SW Corner Section 17, was set by Harry S. Hugill in 1949, by double proportionate methods.

The W 1/4 Corner Section 17 was set by Harry S. Hugill in 1949, by single proportion.

Original evidence for the S 1/4 Corner Section 17 was searched for, but not found. It was set by single proportion methods, midway between the SW Corner and the SE Corner of Section 17.

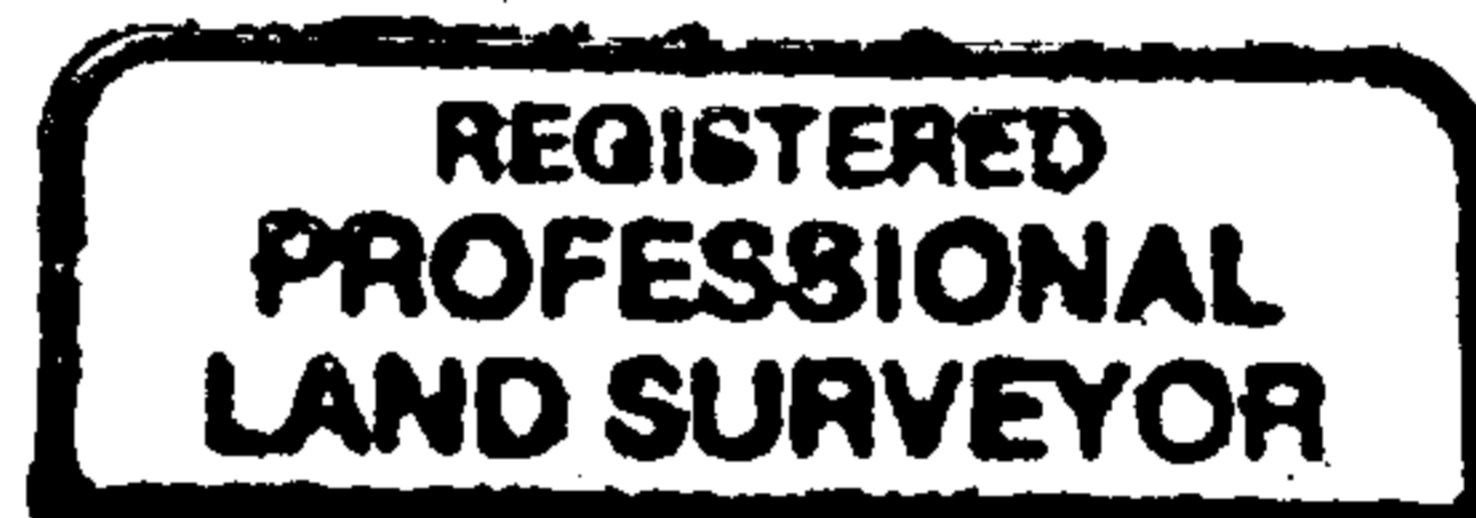
The subdivision of Section 8 and Section 17 was performed according to the 1973 BLM Manual of Survey Instructions. Property corners and their accessories were also set according to the 1973 BLM Manual of Survey Instructions. A Witness

M 93-34

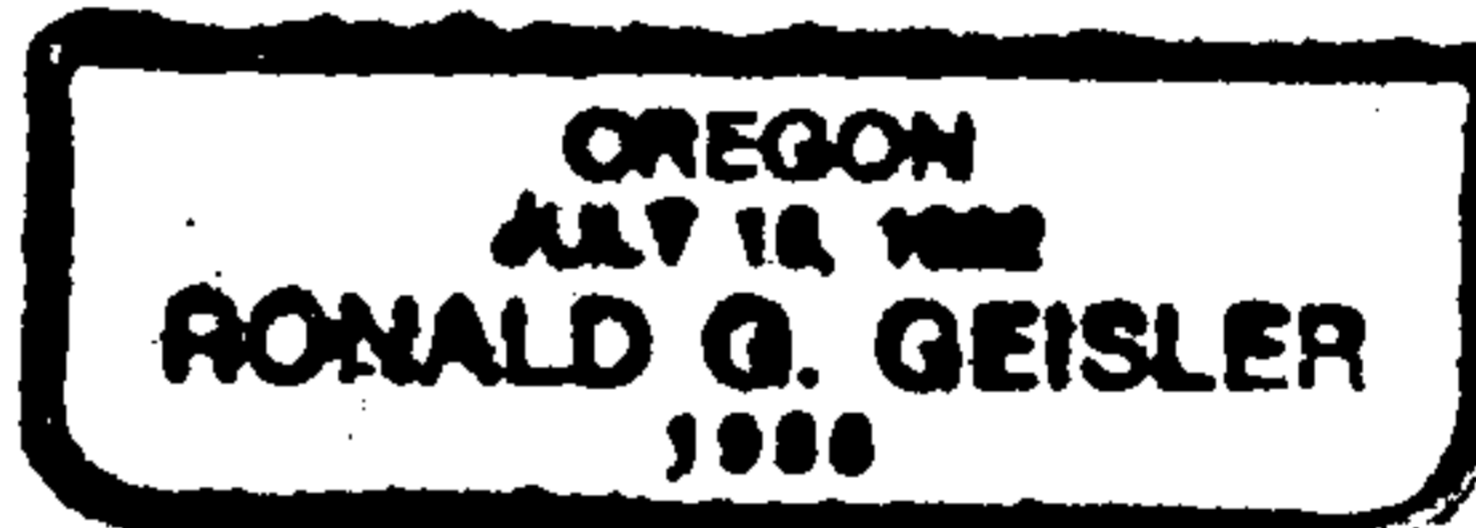
Corner was set for the S 1/16 Corner Sections 8 and 9, because it fell within the banks of Joyce Creek. In addition, a Witness Corner was set for the CE 1/16 Corner Section 17, which fell in the Smith River.

All traverses run, were closed loops with minimum acceptable closure of 1 part in 4000.

Property lines were posted to within $\pm 1'$ of true line, using 6' steel fence posts, with attached "Champion" signs, at maximum 250' intervals. A segment of property line between the SW Corner Section 8 and the W 1/16 Corner Sections 8 and 17, was previously posted by Richard J. Hintz, P.L.S. 497, in 1982, using 1/2" x 60" iron rods with attached, aluminum "International Paper" signs. Those iron rods were tied to in a closed traverse, and determined to be on the true property line.



Ronald G. Geisler



Ronald G. Geisler
P.O. Box 37
Mapleton, Oregon 97453