

**SURVEY LOCATED IN SEC. 1 & 2, T. 21 S., R. 11 W.; SEC. 36, T. 20 S., R. 11 W.,
SEC. 31, T. 20 S., R. 10 W., W.M. DOUGLAS COUNTY, OREGON**

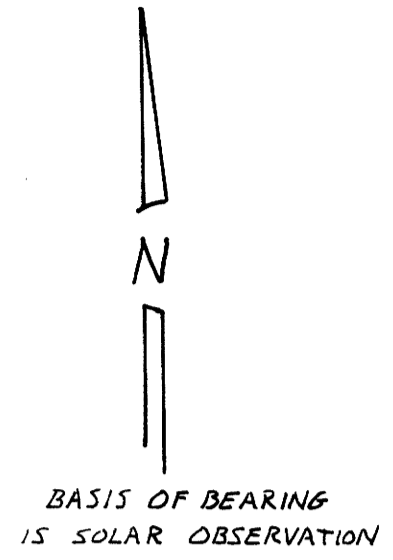
SHEET 1 OF 2

DATE NOVEMBER 1, 1982

SCALE 1 INCH TO 400 FEET

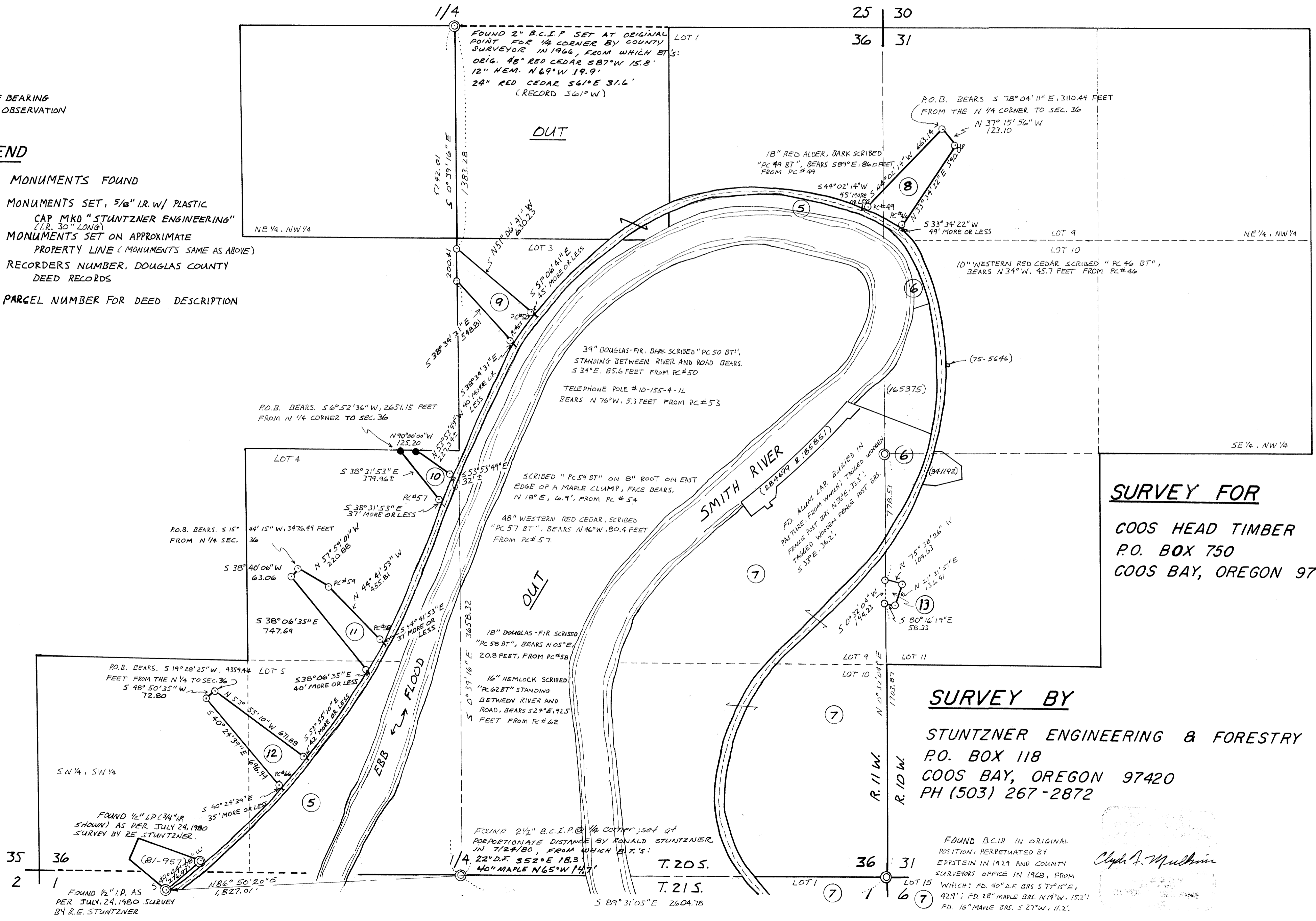
FILED *bl*
RECEIVED *bl*
DEC 9 1982
COUNTY SURVEYOR
DOUGLAS COUNTY, ORE.
bl

MAP FILE 17-93-30-17



LEGEND

- ⊙ MONUMENTS FOUND
- MONUMENTS SET, 5/8" I.R.W/ PLASTIC
CAP MKD "STUNTZNER ENGINEERING"
(I.R. 30" LONG)
- MONUMENTS SET ON APPROXIMATE
PROPERTY LINE (MONUMENTS SAME AS ABOVE)
- () RECORDS NUMBER, DOUGLAS COUNTY
DEED RECORDS
- PARCEL NUMBER FOR DEED DESCRIPTION



SURVEY FOR
 COOS HEAD TIMBER CO.
 P.O. BOX 750
 COOS BAY, OREGON 97420

SURVEY BY
 STUNTZNER ENGINEERING & FORESTRY
 P.O. BOX 118
 COOS BAY, OREGON 97420
 PH (503) 267-2872

Clayton A. Mullikin

MAP FILE 17-93-30-17

SURVEY LOCATED IN SEC. 1 & 2, T. 21 S., R. 11 W.; SEC. 36, T. 20 S., R. 11 W.;
SEC. 31, T. 20 S., R. 10 W., W.M. DOUGLAS COUNTY, OREGON

SHEET 2 OF 2

DATE NOVEMBER 1, 1982

SCALE 1 INCH TO 400 FEET

FILED *bl*
RECEIVED *bl*
DEC 9 1982

COUNTY SURVEYOR
DOUGLAS COUNTY, ORE.
bl

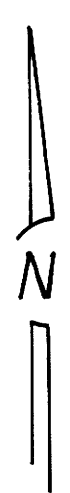
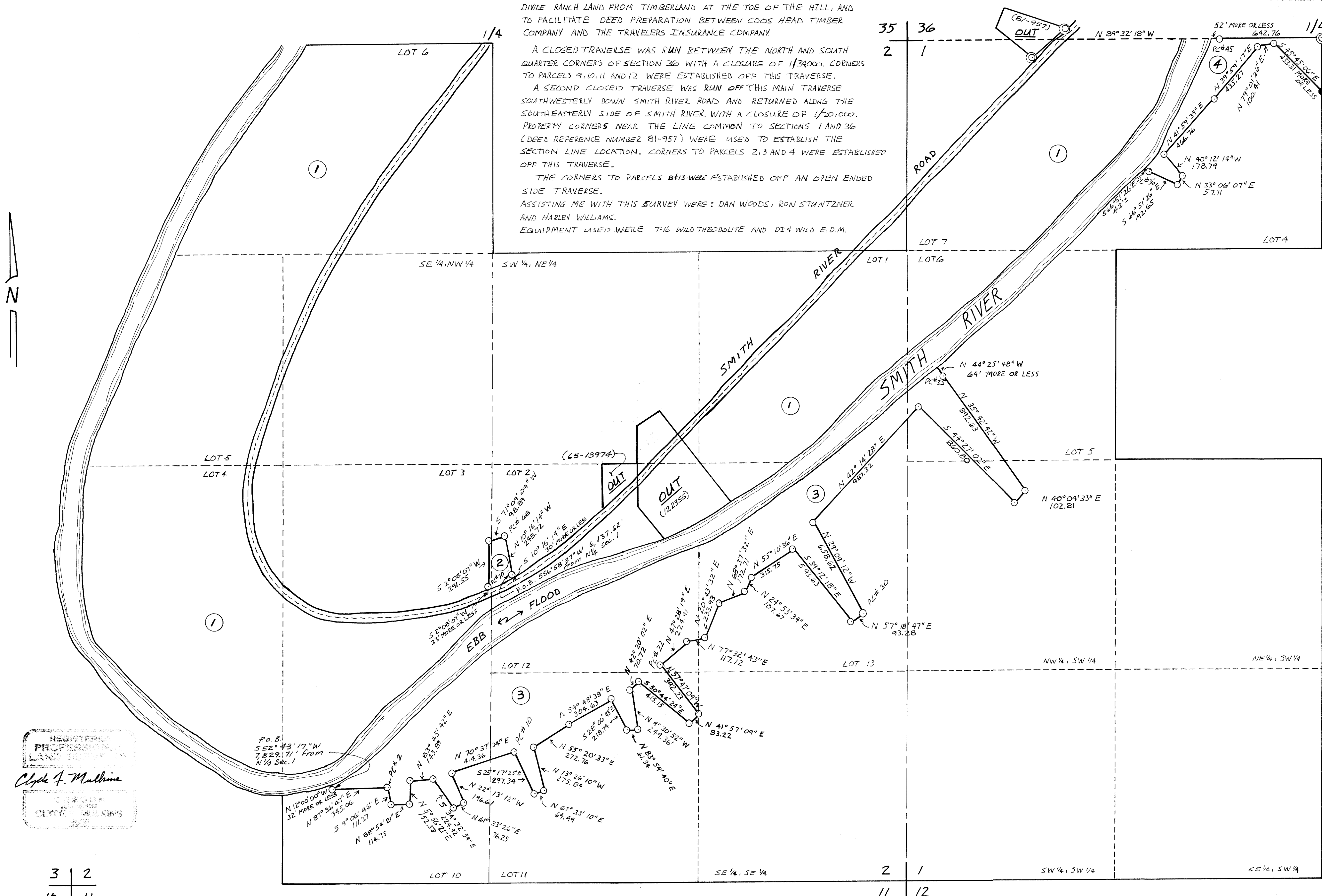
NARRATIVE

THE PURPOSE OF THIS SURVEY AND MAP PREPARATION WAS TO DIVIDE RANCH LAND FROM TIMBERLAND AT THE TOE OF THE HILL, AND TO FACILITATE DEED PREPARATION BETWEEN COOS HEAD TIMBER COMPANY AND THE TRAVELERS INSURANCE COMPANY.

A CLOSED TRAVERSE WAS RUN BETWEEN THE NORTH AND SOUTH QUARTER CORNERS OF SECTION 36 WITH A CLOSURE OF 1/34000. CORNERS TO PARCELS 9, 10, 11 AND 12 WERE ESTABLISHED OFF THIS TRAVERSE.
A SECOND CLOSED TRAVERSE WAS RUN OFF THIS MAIN TRAVERSE SOUTHWESTERLY DOWN SMITH RIVER ROAD AND RETURNED ALONG THE SOUTHEASTERLY SIDE OF SMITH RIVER WITH A CLOSURE OF 1/20,000. PROPERTY CORNERS NEAR THE LINE COMMON TO SECTIONS 1 AND 36 (DEED REFERENCE NUMBER 81-957) WERE USED TO ESTABLISH THE SECTION LINE LOCATION. CORNERS TO PARCELS 2, 3 AND 4 WERE ESTABLISHED OFF THIS TRAVERSE.

THE CORNERS TO PARCELS 8 & 13 WERE ESTABLISHED OFF AN OPEN ENDED SIDE TRAVERSE.
ASSISTING ME WITH THIS SURVEY WERE: DAN WOODS, RON STUNTNER AND HARLEY WILLIAMS.
EQUIPMENT USED WERE T-16 WILD THEODOLITE AND D-14 WILD E.D.M.

SEE CORNER NOTES ON SHEET 1 OF 2



REGISTERED
PHOTOGRAPHIC
LAND SURVEYING
Clayton J. Mulhine
1982

3	2
10	11

2	1
11	12

MAP FILE M 93-302B