

COR. SEC'S 13,18,19, & 24

Fd.: U.S.G.L.O. BRASS CAP, "1957"
 W/4" IRON ALONGSIDE
 40" CEDAR, N18°E, 40.9' (ORIG.)
 14" HEMLOCK, N50°E, 17.6' *
 10" HEMLOCK, S22°E, 25.4'
 48" FIR, S44½°W, 35.2' (ORIG.)
 10" HEMLOCK, WEST, 17.6'
 12" HEMLOCK, N42½°W, 14.0'

PROFESSIONAL
 LAND SURVEYOR
 Daniel W. Baker
 OREGON
 JULY 16 1982
 DANIEL W. BAKER
 1978

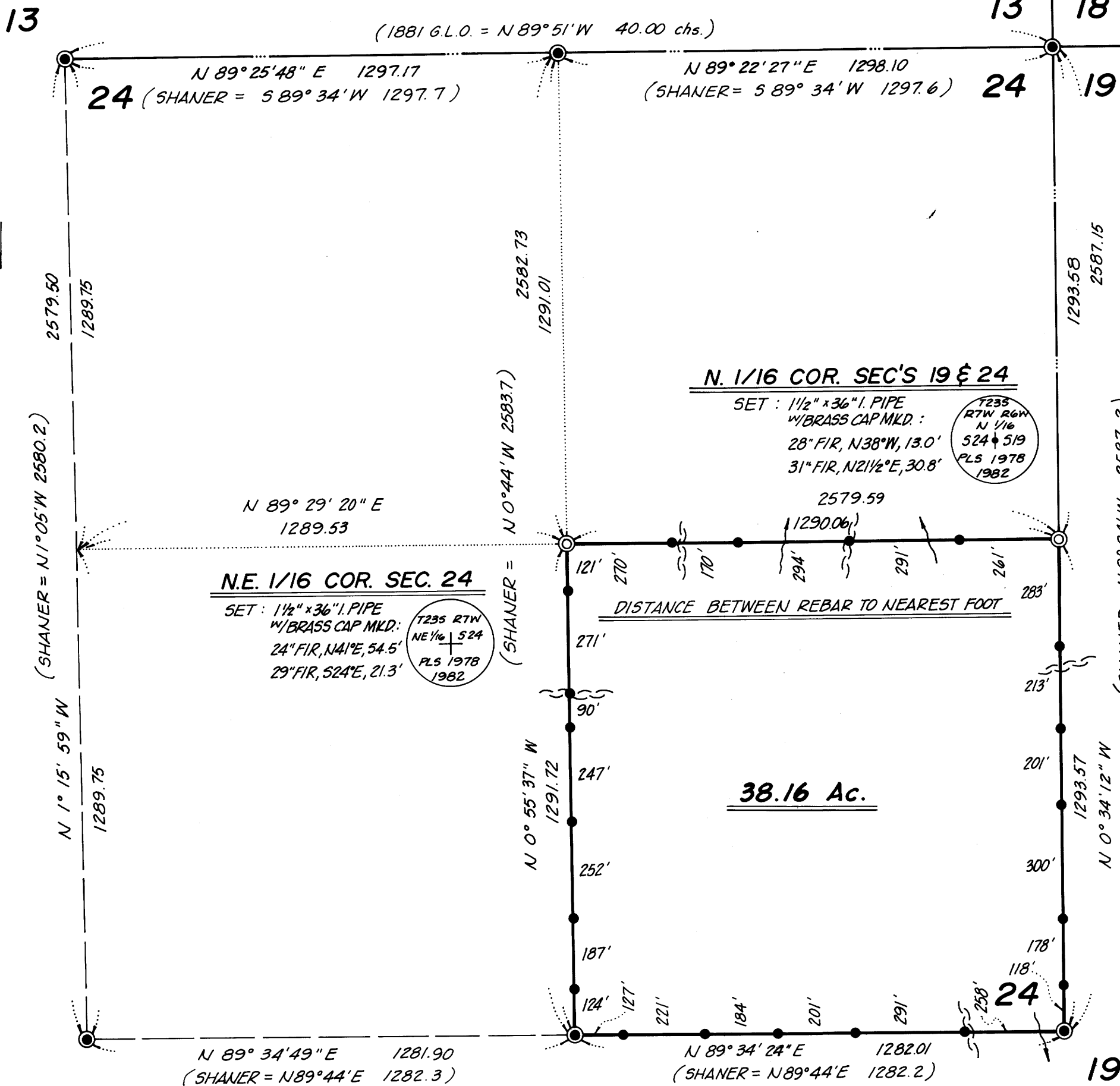
FILED BS
 RECEIVED BS
 NOV 28 1982
 COUNTY SURVEYOR
 DOUGLAS COUNTY, ORE.
 BS

1/4 COR. SEC'S 13 & 24

Fd.: 2" "L" IRON
 20" YEW, S51°W, 71.5' (SCRIBE VIS.)
 17" W. FIR SNAG, N64½°E, 22.1' (SCRIBE VIS.)

E. 1/16 COR. SEC'S 13 & 24

Fd.: 3/4" IRON PIPE
 16" HEMLOCK, N43°E, 34.9'
 16" FIR, S29°E, 20.2'



NARRATIVE:

THIS SURVEY WAS MADE IN OCTOBER AND NOVEMBER, 1982 BY DANIEL W. BAKER OF PEEL BAKER LAND SURVEYING, INC., 1262 LAWRENCE ST., EUGENE, OREGON. THE PURPOSE OF THIS SURVEY WAS TO LOCATE AND MARK THE BOUNDARY LINES OF THE PROPERTY OWNED BY INTERNATIONAL PAPER COMPANY IN SECTION 24, T.23S., R.7W., W.M.. A KERN K15 THEODOLITE & DM 502 E.D.M. WERE USED TO PERFORM THIS SURVEY. RANDOM TRANSIT TRAVERSES WITH A MINIMUM ERROR OF CLOSURE OF 1/25,000' WERE RUN BETWEEN FOUND CORNERS FOR CONTROL. BEARINGS WERE BASED ON A SOLAR OBSERVATION. OFFSETS TO THE TRUE PROPERTY LINE WERE CALCULATED AND USED TO DETERMINE THE POSITION OF THE TRUE LINE. THE TRUE PROPERTY LINE WAS MARKED IN THE FIELD BY 1/2" x 60" REBAR SET AT RANDOM INTERVALS APPROXIMATELY ON TRUE LINE, AND BY BLAZING TREES (BLAZES PAINTED RED) ON ONE SIDE OF THE TRUE LINE. THE NORTHEAST SECTION CORNER AND EAST 1/4 CORNER WERE SET BY THE G.L.O. IN 1957 FROM ORIGINAL EVIDENCE. THE NORTH 1/4 CORNER, EAST 1/16 CORNER, CENTER 1/4 CORNER, AND C-E 1/16 CORNER WERE ALL SET BY SHANER IN 1962 AS PER M 23-62 (DOUGLAS COUNTY SURVEY RECORDS). I HONORED THESE CORNERS AND USED THEM FOR SUBDIVISION PURPOSES. THE NORTH 1/16 ON THE EAST LINE WAS SET AT MIDPOINT BETWEEN THE EAST 1/4 CORNER AND THE NORTHEAST SECTION CORNER. THE C-N 1/16 WAS DETERMINED (BUT NOT SET THIS SURVEY) AT MIDPOINT BETWEEN THE CENTER 1/4 CORNER & THE NORTH 1/4 CORNER. THE NORTHEAST 1/16 CORNER WAS SET AT THE INTERSECTION POINT OF THE EAST-WEST CENTERLINE & THE NORTH-SOUTH CENTERLINE OF THE NORTHEAST QUARTER OF SECTION 24. CORNERS SET IN THIS SURVEY WERE MONUMENTED WITH 1/2" x 36" IRON PIPES WITH BRASS CAPS.

SCALE: 1" = 300'

BASIS OF BEARING: SOLAR OBSERVATION

ALL DISTANCES TO BEARING TREES ARE CENTER MEASURE, AND BEARINGS ARE MAGNETIC, VAR. 20°

- CORNERS FOUND AND USED FOR CONTROL
- ⊙ CORNERS SET THIS SURVEY
- 1/2" x 60" REBAR SET
- PROPERTY LINE BLAZED AND POSTED WITH 1/2" x 60" REBAR
- () RECORD DATA

* NOTE - PERMISSION LETTER FOR MAKING CORRECTIONS IS FILED IN C.S. 6/15

COUNTY SURVEYORS FILE DATA
 DO NOT REMOVE FROM OFFICE

SURVEY OF
N.E. 1/4 SECTION 24, T.23S., R.7W., W.M.
DOUGLAS COUNTY, OREGON
 FOR
INTERNATIONAL PAPER COMPANY
 BY
PEEL BAKER LAND SURVEYING INC.
 NOVEMBER 8, 1982

C. 1/4 COR. SEC. 24

Fd.: 1" ALUMINUM PIPE
 19" FIR, N29°E, 27.2'
 31" FIR, S65½°W, 11.5'
 * C 12/1/82

C-E 1/16 COR. SEC. 24

Fd.: 3/4" IRON PIPE
 30" FIR, N66°E, 13.5'
 14" FIR STUB (BROKEN), S75°W, 31.6'
 SET: 16" FIR, N67°W, 41.7'

1/4 COR. SEC'S 19 & 24

Fd.: U.S.G.L.O. BRASS CAP, "1957"
 34" INCENSE CEDAR, N21°E, 34.0' (ORIG.)
 38" CEDAR STUB, S48°W, 14.6' (ORIG.)
 12" FIR, S35°E, 17.4' (N 25°E)
 20" FIR, N70½°W, 6.8' (S 67°W)

C.S. File No. 6/15 (2)
 MAP FILE M 93-23