

COUNTY SURVEYORS FILE DATA
DO NOT REMOVE FROM OFFICE

PROPERTY SURVEY

IN THE S.W. 1/4, SECTION 16 AND THE N.W.
1/4 SECTION 21, T. 25 S., R. 4 W., W.M., DOUGLAS
COUNTY, OREGON.

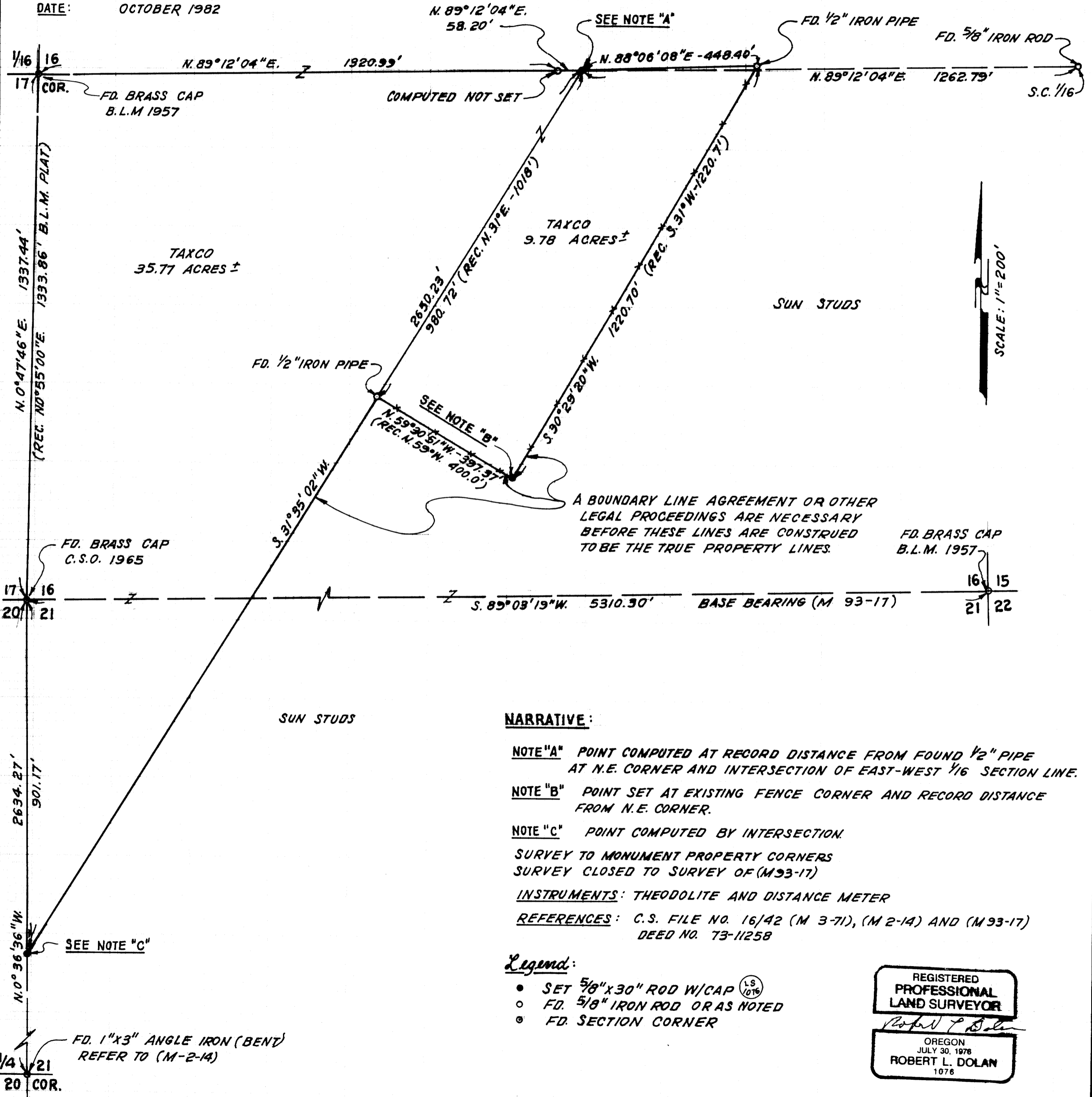
FILED *bd*
RECEIVED *JS*
OCT 28 1982

COUNTY SURVEYOR
DOUGLAS COUNTY, ORE.
bd

FOR: TAXCO CORPORATION

SURVEYOR: ROBERT L. DOLAN
RT. 1 BOX 1820
SUTHERLIN, OREGON 97479

DATE: OCTOBER 1982



NARRATIVE:

NOTE "A" POINT COMPUTED AT RECORD DISTANCE FROM FOUND 1/2" PIPE AT N.E. CORNER AND INTERSECTION OF EAST-WEST 1/16 SECTION LINE.

NOTE "B" POINT SET AT EXISTING FENCE CORNER AND RECORD DISTANCE FROM N.E. CORNER.

NOTE "C" POINT COMPUTED BY INTERSECTION.

SURVEY TO MONUMENT PROPERTY CORNERS
SURVEY CLOSED TO SURVEY OF (M 93-17)

INSTRUMENTS: THEODOLITE AND DISTANCE METER

REFERENCES: C.S. FILE NO. 16/42 (M 3-71), (M 2-14) AND (M 93-17)
DEED NO. 73-11258

Legend:

- SET 5/8" x 30" ROD W/CAP (LS 1076)
- FD. 5/8" IRON ROD OR AS NOTED
- ⊙ FD. SECTION CORNER

REGISTERED
PROFESSIONAL
LAND SURVEYOR

Robert L. Dolan

OREGON
JULY 30, 1978
ROBERT L. DOLAN
1076