

SURVEY TO ESTABLISH PROPERTY CORNERS
FOR - H. M. PRESTON
BY - BAUGHMAN TECHNICAL SERVICE INC.
IN - SW 1/4, Sec. 13, T.22S., R.10 W. W. M.
SCALE 1" = 30' JULY, 1982 (Revised SEPT. 1982)

REGISTERED
PROFESSIONAL
LAND SURVEYOR

Glenn S. Baughman

OREGON
JULY 14, 1961
GLENN S. BAUGHMAN
536

FILED *BS*
RECEIVED *VB*

OCT 25 1982

COUNTY SURVEYOR
DOUGLAS COUNTY, ORE.

BS

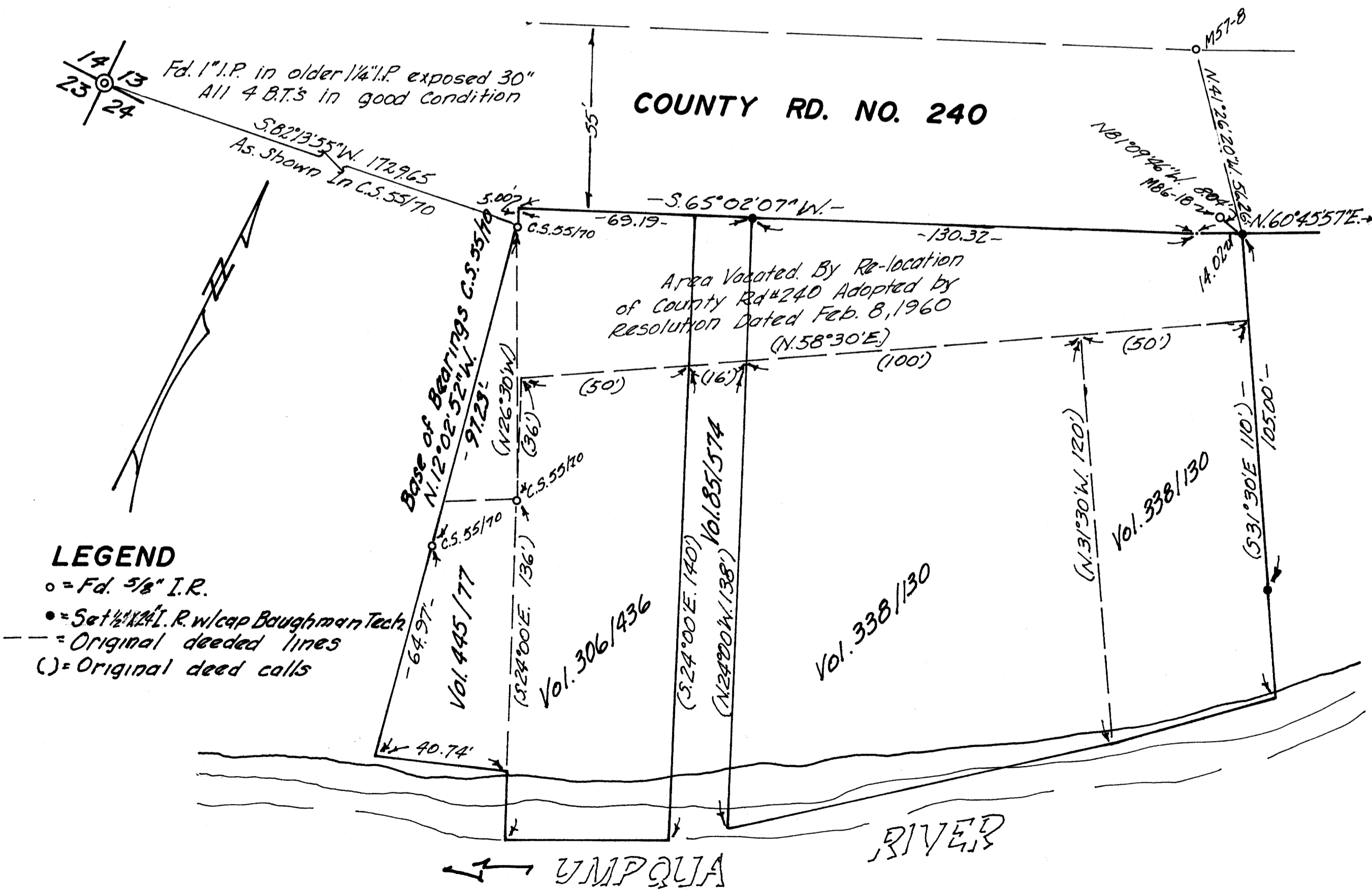
COUNTY SURVEYORS FILE DATA
DO NOT REMOVE FROM OFFICE

NARRATIVE

This survey was made to establish the Easterly property line of the H. M. Preston property. The survey was carried on under the supervision of Glenn Baughman, 5157 N. Umpqua Highway, Roseburg, Oregon.

The property lines were established as a projection from the corners established in CS 55/70. The original point of beginning for these properties was destroyed during construction and slide removal of County Road #240, therefore we established the original lines, CS 55/70., from the section and meander corner. We checked into survey M57-8 and find that in that survey we allowed for a 60' R/W as per the Planning Staff's wishes. We found a monument set by Wilford Haines which we have tied and have shown.

The survey was carried on by Glenn Baughman, Lester Fanning and Mack Clark, using a Wild T1AE Theodolite and 300 foot chain.



LEGEND

- = Fd. 5/8" I.R.
- = Set 1/2" I.R. w/cap Baughman Tech.
- - - = Original deeded lines
- () = Original deed calls