

# DOUGLAS COUNTY LAND DEPARTMENT

LOCATED IN N.W. 1/4, S.10, T.25S., R.4 W., W.M.

## PLAT OF NONPARIEL

PREPARED BY

DOUGLAS COUNTY SURVEYOR'S OFFICE

FRANCIS L. INGRAM

DOUGLAS COUNTY SURVEYOR

RM. 205 JUSTICE BLDG.

ROSEBURG, ORE. 97470

OCTOBER 1982

COUNTY SURVEYORS FILE DATA  
DO NOT REMOVE FROM OFFICE

FILED *bs*  
RECEIVED *bs*

COUNTY SURVEYOR  
DOUGLAS COUNTY, ORE.

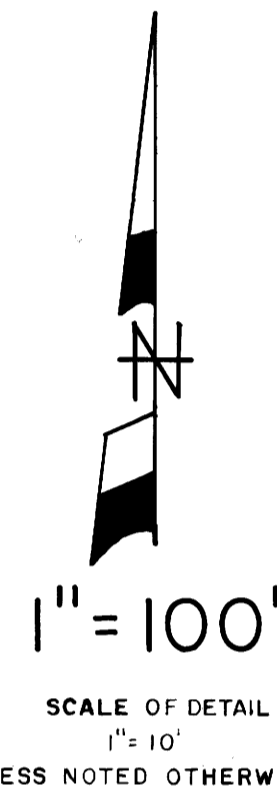
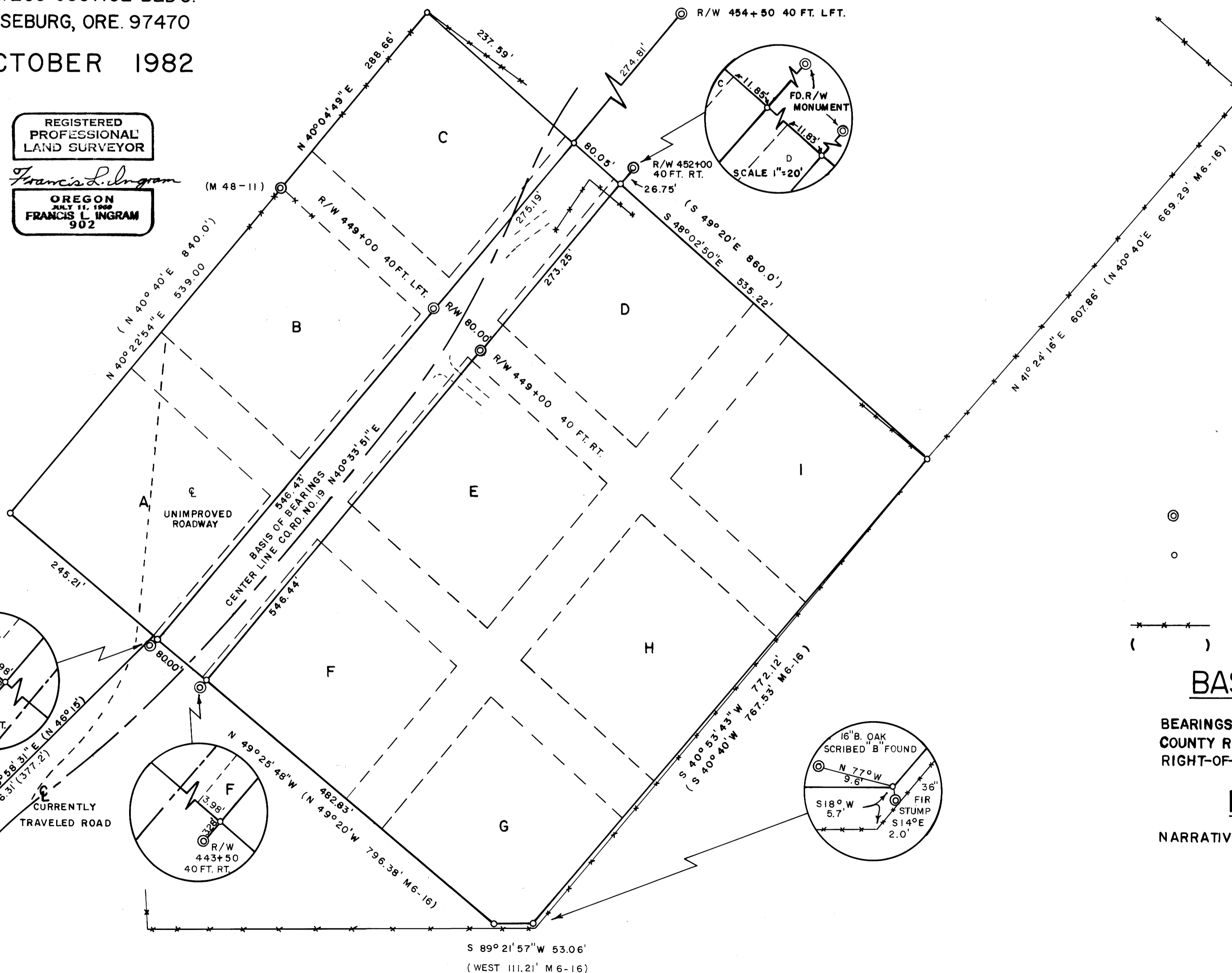
*bs*

C.S. FILE 62/4  
MAP FILE M93-12

REGISTERED  
PROFESSIONAL  
LAND SURVEYOR

*Francis L. Ingram*

OREGON  
JULY 11, 1960  
FRANCIS L. INGRAM  
902



### LEGEND

- ⊙ FOUND 5/8" I.R. OR AS NOTED (SOURCES ARE GIVEN IF KNOWN)
- SET 5/8" x 30" I.R. WITH ALUMINUM CAP STAMPED "DOUGLAS CO. SURVEYOR"
- FENCE LINE
- ( ) INDICATES PLAT RECORD—SEE NARRATIVE

### BASIS OF BEARINGS

BEARINGS WERE BASED ON CENTER LINE OF COUNTY ROAD NO. 19 AS DETERMINED FROM FOUND RIGHT-OF-WAY MONUMENTS SHOWN ON THE MAP.

### NARRATIVE

NARRATIVE FILED SEPARATELY IN CS 62/4

C.S. FILE 62/4  
MAP FILE M93-12

NARRATIVE FOR SURVEY M 93-12

FILED *BS*  
RECEIVED *SL*

OCT 21 1982

COUNTY SURVEYOR  
DOUGLAS COUNTY, ORE.

MAP FILE:

FOR: Douglas County Land Department

BY: Francis L. "Fritz" Ingram, Douglas County Surveyor  
Room 205, Justice Hall, Roseburg, OR 97470

LOCATION: NW 1/4 Section 10, Township 25 South, Range 4 West, W.M.

DATE: October 19, 1982

PURPOSE OF SURVEY: To monument the exterior boundaries of the land known as "Town of Nonpariel" as platted and recorded in Volume 12 Page 82 of the records of the Douglas County Clerk.

BASIS OF BEARINGS: County Road Number 19 (North 40° 33' 51" East) between Stations 443+50 and 454+50 as determined from the found right-of-way monuments indicated upon the map of survey.

PLAT RECONSTRUCTION: After careful examination and evaluation of the Plat of Nonpariel, surveys M 6-16, M 89-30, M 48-11, M 12-66, M 11-2, and CS 55/58 the survey of County Road Number 19, aerial maps of the area and adjoining deeds, and lines of occupancy (fence lines, etc.), the following conclusions were reached:

The best evidence of the locations of the north corner of Block "C" and the east corner of Block "I" is the existing fence corner at each location.

The southeast corner of Block "G" was reestablished from bearing trees called for in deed records.

The best evidence of the north corner of Block "B" is the monument set by Don Garrett at a fence corner.

Retracement of the tie to the northeast corner of D.L.C. Number 49, the southwest boundary of Block "A" and the line from the west corner of Block "A" to the north corner of Block "B" was performed by a compass rule adjustment of record calls run between the positions of the D.L.C. corner and the north corner of Block "B".

The southwest corner of Block "G" was reconstructed at the intersection of a line between the southeast corner of Block "G" and the fence corner to the west with a line extended southeasterly from the southwest line of Block "A".

Intersection right-of-way points were determined using the right-of-way lines of County Road Number 19 and the reconstructed plat lines.

COMPUTATIONS AND DRAFTING: F.L. Ingram, L.E. Monrean, and R.W. Smith

FIELD WORK: G.E. Quibell, K. Reed, J.M. Powell, and T.R. Fransenn

EQUIPMENT: Kern 1 Second Theodolite #270878  
Leitz Red-1 EDM #1657  
Miscellaneous survey related equipment

REGISTERED  
PROFESSIONAL  
LAND SURVEYOR

*Francis L. Ingram*

OREGON  
JULY 11, 1969  
FRANCIS L. INGRAM  
902

*C. S. File No. 62/4*