

COUNTY SURVEYORS FILE DATA
DO NOT REMOVE FROM OFFICE

NARRATIVE:

SURVEY OF LOTS 16 & 17 OF BLOCK 22 OF "KINNEY'S IMPROVED PLAT" (VOL. 1 PG. 41) AS DESCRIBED IN INSTRUMENT NO. 79-13295 IN THE DOUGLAS COUNTY DEED RECORDS.

REFERENCE SURVEYS ARE "KINNEY'S IMPROVED PLAT", M51-74, C.S. 16/52, M48-55, M32-32 AND M58-53.

THE PROPORTIONING OF THE BLOCK WAS ESTABLISHED BY TYING THE CENTERLINE OF FREEMONT AVENUE AND DISTRIBUTING FROM THERE TO THE CENTERLINE OF ODELL AVENUE. THE CENTERLINE OF ODELL AVENUE WAS ESTABLISHED BY RECORD DISTANCE NORTHERLY ALONG THE WESTERLY LINE OF THE ALLEY FROM A 5/8" IRON ROD SET BY BRUCE ROGERS PER SURVEY M58-53. THIS ALLOWED THE BEARING OF ODELL AVENUE TO FALL WITHIN 12 SECONDS OF RECORD.

SURVEY CREW: GREG LANG, MIKE RADCLIFFE, ROMEX WARE.
EQUIPMENT: LEITZ RED-1 E.D.M. ON A WILD T1 THEODOLITE.

OFFICE: ROMEX WARE & DEBBIE HOPKINS.

FOR RECORD MEASUREMENTS, SEE PLAT OF "KINNEY'S IMPROVED PLAT".

FILED *BS*
RECEIVED *BS*

OCT 14 1982

COUNTY SURVEYOR
DOUGLAS COUNTY, ORE.

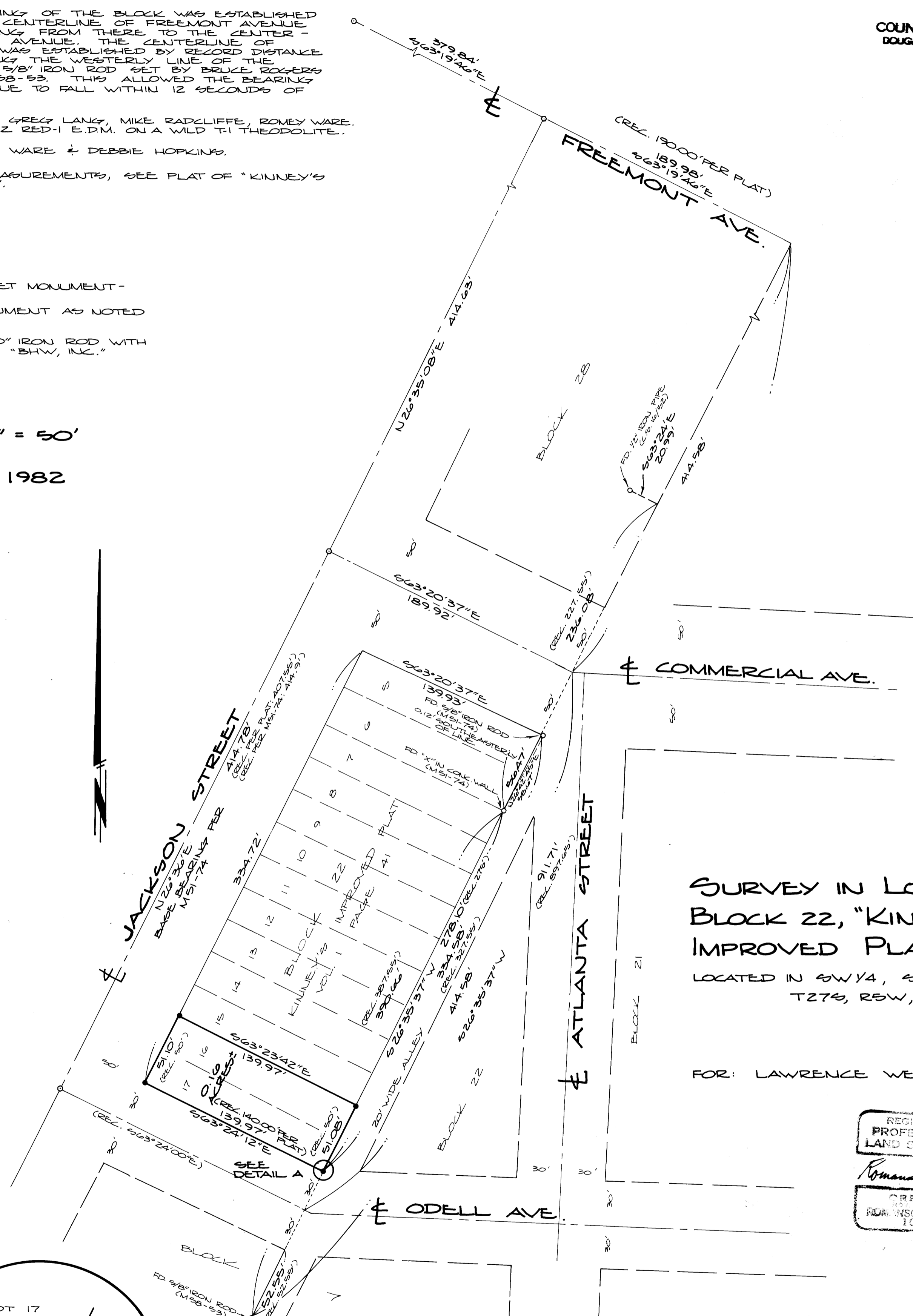
BS

LEGEND:

- - FOUND STREET MONUMENT -
- - FOUND MONUMENT AS NOTED
- - SET 5/8" x 30" IRON ROD WITH CAP MARKED "BHW, INC."

SCALE: 1" = 50'

AUGUST 1982



SURVEY IN LOTS 16 & 17,
BLOCK 22, "KINNEY'S
IMPROVED PLAT"

LOCATED IN SW1/4, SECTION 18,
T27S, R5W, W.M.

FOR: LAWRENCE WELCH

REGISTERED
PROFESSIONAL
LAND SURVEYOR

Romex E. Ware

OREGON
REGISTERED
PROFESSIONAL
LAND SURVEYOR
1009

BY: BHW ENGINEERING, INC.
1205 S.E. COURT
ROSEBURG, OREGON 97470
673-0165

