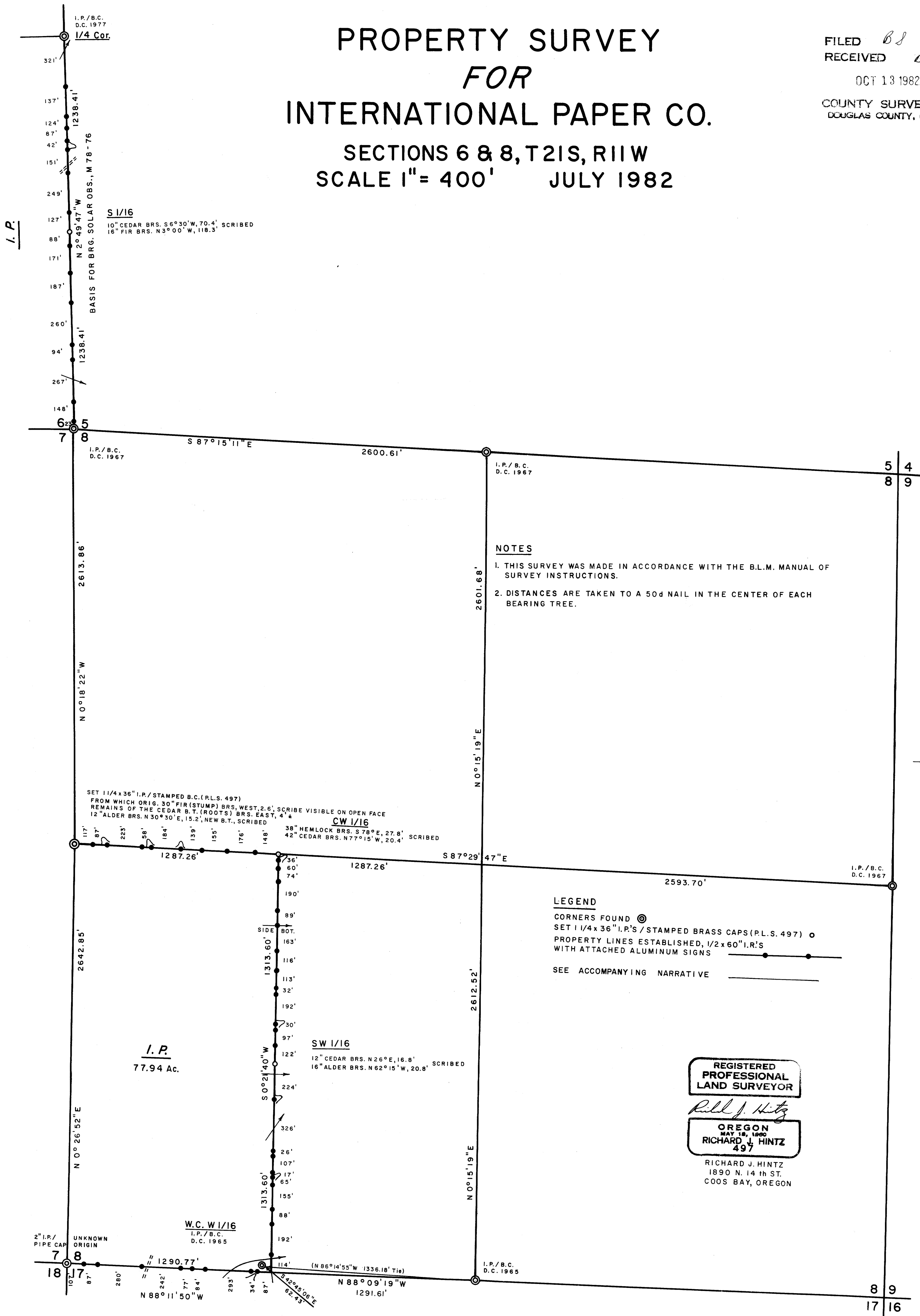


PROPERTY SURVEY FOR INTERNATIONAL PAPER CO.

SECTIONS 6 & 8, T21S, R11W
SCALE 1" = 400' JULY 1982

FILED *BS*
RECEIVED *BS*
OCT 13 1982
COUNTY SURVEYOR
DOUGLAS COUNTY, ORE.
BS



NOTES

- 1. THIS SURVEY WAS MADE IN ACCORDANCE WITH THE B.L.M. MANUAL OF SURVEY INSTRUCTIONS.
- 2. DISTANCES ARE TAKEN TO A 50d NAIL IN THE CENTER OF EACH BEARING TREE.

LEGEND

- CORNERS FOUND \odot
- SET 1/4 x 36" I.P.'S / STAMPED BRASS CAPS (P.L.S. 497) \circ
- PROPERTY LINES ESTABLISHED, 1/2 x 60" I.R.'S WITH ATTACHED ALUMINUM SIGNS $\text{---} \bullet \text{---}$
- SEE ACCOMPANYING NARRATIVE ---

REGISTERED
PROFESSIONAL
LAND SURVEYOR
Richard J. Hintz
OREGON
MAY 18, 1980
RICHARD J. HINTZ
497
RICHARD J. HINTZ
1890 N. 14 TH ST.
COOS BAY, OREGON

