

COUNTY SURVEYORS FILE DATA
DO NOT REMOVE FROM OFFICE

SURVEY OF LOT 26 OF "RIVER BEND ACRES"
IN THE N 1/2 OF SECTION 23, T26S, R6W,
WILLAMETTE MERIDIAN

FILED *BS*
RECEIVED *7/2*

MAY 28 1982

COUNTY SURVEYOR
DOUGLAS COUNTY, ORE.

BS

FOR: EVERETT CUMMINS
BY: BHW ENGINEERING, INC.
1205 S.E. COURT
ROSEBURG, OREGON

SCALE: 1" = 100'
MAY 1982

NARRATIVE:

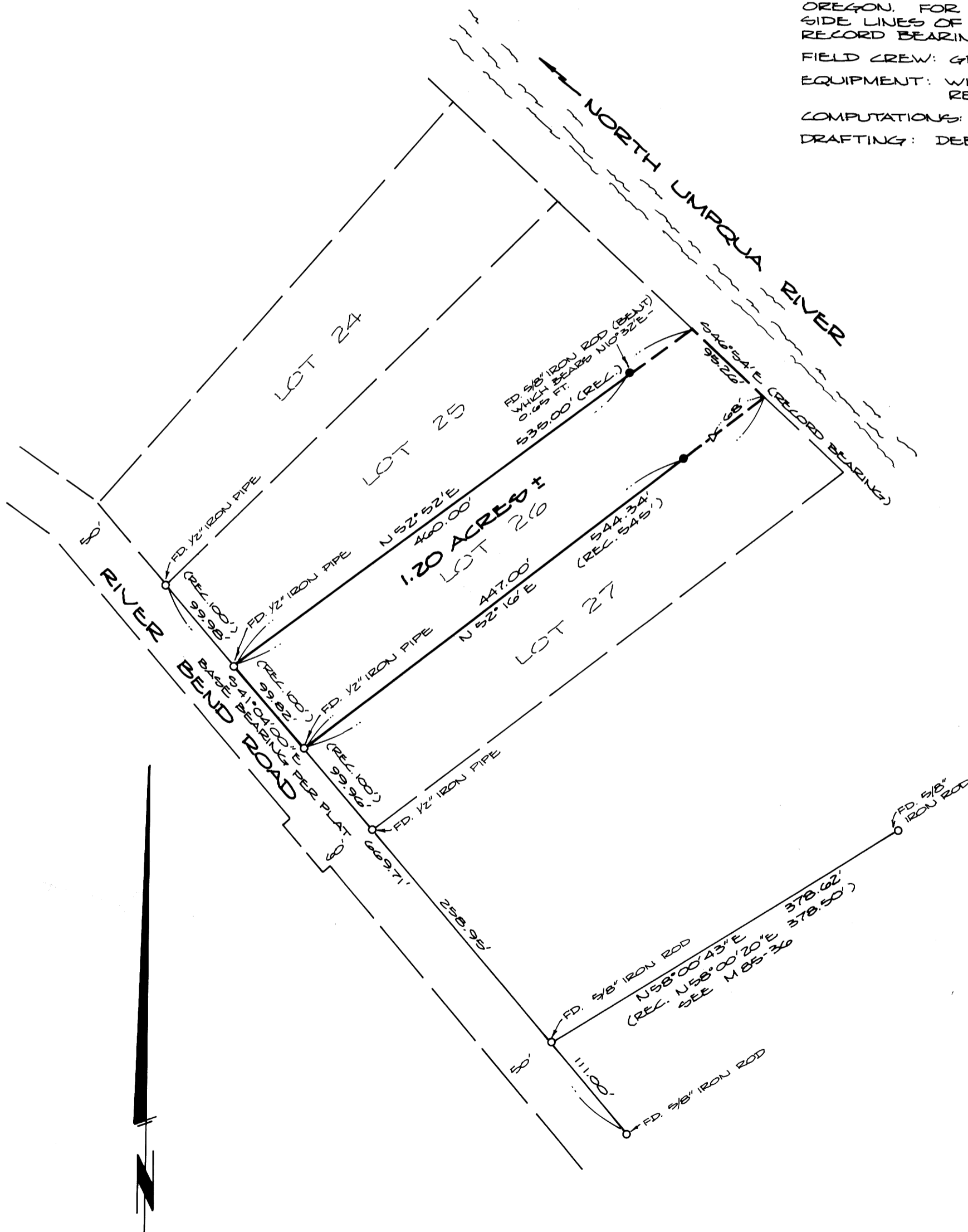
SURVEY TO SET MISSING MONUMENTS OF LOT 26 OF "RIVER BEND ACRES" AS RECORDED IN VOLUME 7, PAGE 74 IN THE PLAT RECORDS OF DOUGLAS COUNTY, OREGON. FOR RECORD MEASUREMENTS SEE PLAT. SIDE LINES OF LOT 26 ESTABLISHED BY EXTENDING RECORD BEARINGS.

FIELD CREW: GREG LANG & MIKE JACKSON.

EQUIPMENT: WILD T-1 THEODOLITE MOUNTED WITH RED-1 E.D.M.

COMPUTATIONS: ROMEO WARE.

DRAFTING: DEBBIE HOPKINS.



LEGEND:

- △ - COMPUTED POINT - MONUMENT SEARCHED FOR BUT NOT FOUND
- - FOUND MONUMENT AS NOTED
- - SET 5/8" x 30" IRON ROD WITH CAP MARKED "BHW, INC."

REGISTERED
PROFESSIONAL
LAND SURVEYOR

Romano E. Ware

OREGON
NOV. 18, 1973
ROMANSO E. WARE
1005