

FILED  
RECEIVED  
SEP 16 1982  
COUNTY SURVEYOR  
DOUGLAS COUNTY, ORE.

(N 89° 57' W 40.00 chs.)  
N 85° 48' 52" E

(N 89° 57' W 40.00 chs.)  
5089.89

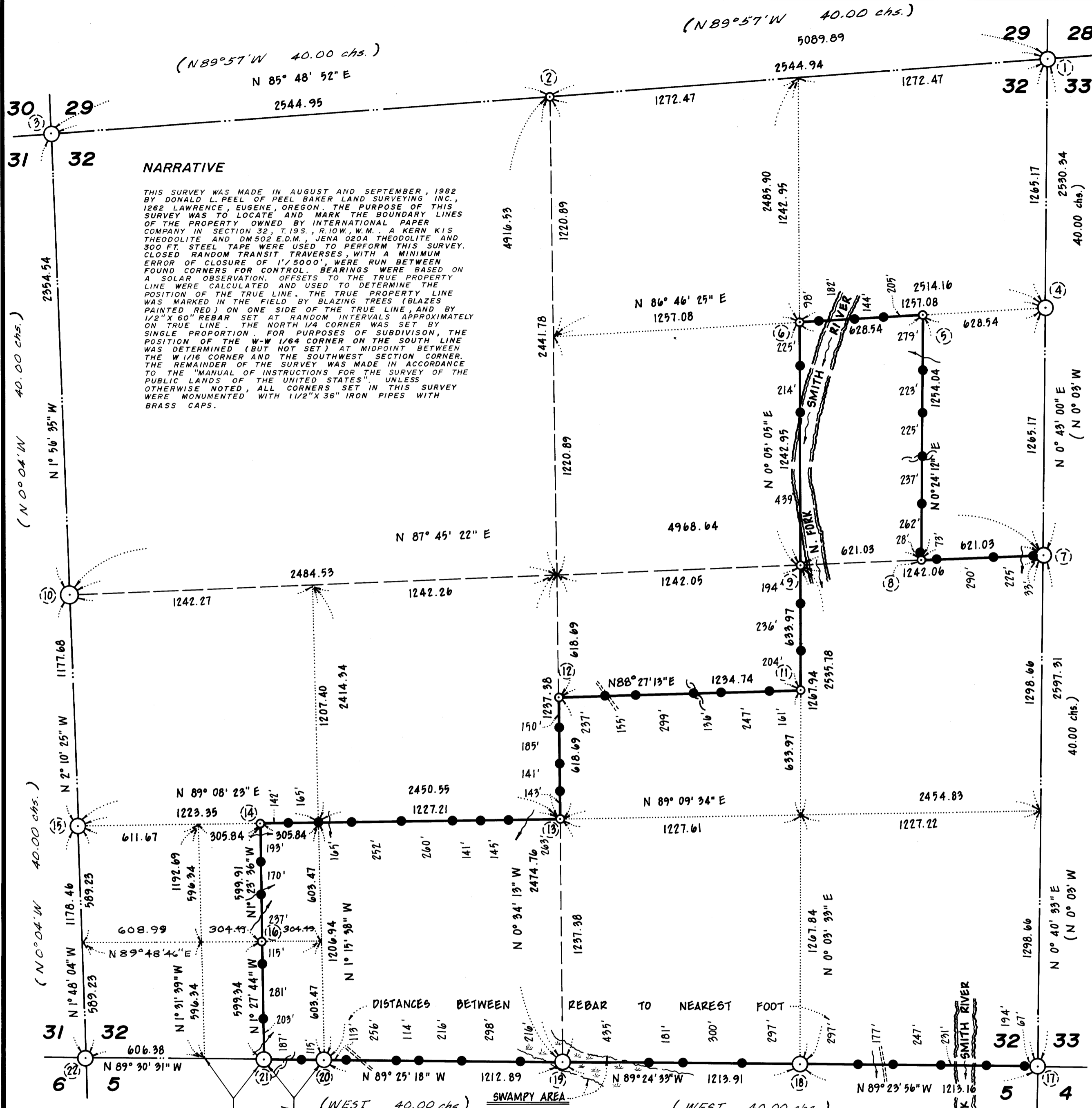
(N 0° 04' W 40.00 chs.)  
N 1° 56' 35" W

(N 0° 04' W 40.00 chs.)  
N 2° 10' 25" W

(N 0° 04' W 40.00 chs.)  
N 1° 48' 04" W

**NARRATIVE**

THIS SURVEY WAS MADE IN AUGUST AND SEPTEMBER, 1982 BY DONALD L. PEEL OF PEEL BAKER LAND SURVEYING, INC., 1262 LAWRENCE, EUGENE, OREGON. THE PURPOSE OF THIS SURVEY WAS TO LOCATE AND MARK THE BOUNDARY LINES OF THE PROPERTY OWNED BY INTERNATIONAL PAPER COMPANY IN SECTION 32, T.19 S., R.10 W., W.M. - A KERN KIS THEODOLITE AND DM502 E.D.M., JENA O20A THEODOLITE AND 300 FT. STEEL TAPE WERE USED TO PERFORM THIS SURVEY. CLOSED RANDOM TRANSIT TRAVERSES, WITH A MINIMUM ERROR OF CLOSURE OF 1"/5000', WERE RUN BETWEEN FOUND CORNERS FOR CONTROL. BEARINGS WERE BASED ON A SOLAR OBSERVATION. OFFSETS TO THE TRUE PROPERTY LINE WERE CALCULATED AND USED TO DETERMINE THE POSITION OF THE TRUE LINE. THE TRUE PROPERTY LINE WAS MARKED IN THE FIELD BY BLAZING TREES (BLAZES PAINTED RED) ON ONE SIDE OF THE TRUE LINE, AND BY 1/2" X 60" REBAR SET AT RANDOM INTERVALS APPROXIMATELY ON TRUE LINE. THE NORTH 1/4 CORNER WAS SET BY SINGLE PROPORTION. FOR PURPOSES OF SUBDIVISION, THE POSITION OF THE W-W 1/64 CORNER ON THE SOUTH LINE WAS DETERMINED (BUT NOT SET) AT MIDPOINT BETWEEN THE W 1/16 CORNER AND THE SOUTHWEST SECTION CORNER. THE REMAINDER OF THE SURVEY WAS MADE IN ACCORDANCE TO THE "MANUAL OF INSTRUCTIONS FOR THE SURVEY OF THE PUBLIC LANDS OF THE UNITED STATES". UNLESS OTHERWISE NOTED, ALL CORNERS SET IN THIS SURVEY WERE MONUMENTED WITH 1/2" X 36" IRON PIPES WITH BRASS CAPS.



SCALE: 1" = 400'  
BASIS OF BEARING: SOLAR OBSERVATION  
ALL DISTANCES TO BEARING TREES ARE CENTER MEASURE, AND BEARINGS ARE MAGNETIC, VAR. 20'

- CORNERS FOUND AND USED FOR CONTROL
- CORNERS SET THIS SURVEY
- 1/2" X 60" REBAR SET
- PROPERTY LINE BLAZED AND POSTED WITH 1/2" X 60" REBAR
- ( ) G.L.O. BEARING AND DISTANCE

- ① SEC. COR. 28, 29, 32, 33  
Fd.: U.S.F.S. 2 1/2" ALUM. MONUMENT  
27" FIR, N 42° E, 80.1'  
52" FIR, S 86° E, 98.4'  
17" ALDER, S 39° W, 14.3' (BARK SCRIBED)  
21" ALDER, N 49° W, 20.7' (BARK SCRIBED)
- ② 1/4 COR. SEC'S 29 & 32  
SET: U.S.F.S. 2 1/2" ALUM. MONUMENT MKD.:  
54" FIR, S 3° W, 197.2'  
90" FIR, S 88 1/2° W, 254.1'
- ③ SEC. COR. 29, 30, 31, 32  
Fd.: U.S.B.L.M. BRASS CAP "1978"  
34" FIR, N 26 1/2° E, 43.6'  
32" FIR, S 64 1/2° E, 12.0'  
24" FIR SNA, S 44° W, 26.4'  
18" FIR, S 51° W, 52.8'  
30" FIR, N 6° W, 31.0'
- ④ N. 1/16 SEC'S 32, 33  
Fd.: U.S.F.S. 2 1/2" ALUM. MONUMENT  
19" FIR, S 23° E, 35.3'  
20" FIR, N 69° W, 90.0'
- ⑤ C-E-NE 1/64 COR. SEC. 32  
SET: 1 1/2" X 36" I. PIPE W/BRASS CAP MKD.:  
15" FIR, N 79° E, 22.1'  
34" FIR, S 25° W, 33.4'
- ⑥ NE 1/16 COR. SEC. 32  
SET: 1 1/2" X 36" I. PIPE W/BRASS CAP MKD.:  
22" MAPLE, S 11° W, 101.3'  
48" ALDER, S 73° E, 70.0'
- ⑦ 1/4 COR. SEC'S 32 & 33  
Fd.: 1 1/4" I. PIPE W/BRASS CAP (DOUGLAS COUNTY "1969")  
24" FIR, S 40 1/2° E, 11.0' (BARK SCRIBED)  
27" FIR, S 39 1/2° W, 7.2' (BARK SCRIBED)
- ⑧ C-E-E 1/64 COR. SEC. 32  
SET: 3/4" X 41" I. PIPE W/BRASS CAP MKD.:  
34" FIR, N 13° W, 28.0'  
22" FIR, S 69° W, 16.1'
- ⑨ C-E 1/16 COR. SEC. 32  
SET: 1 1/2" X 36" I. PIPE W/BRASS CAP MKD.:  
35" FIR, S 74° W, 32.9'  
28" FIR, S 2° E, 35.8'
- ⑩ 1/4 COR. SEC'S 31 & 32  
Fd.: U.S.B.L.M. BRASS CAP, "1979"  
19" FIR, S 62° E, 22.2'  
28" FIR, N 69 1/2° W, 31.2'
- ⑪ C-N-SE 1/64 COR. SEC. 32  
SET: 1 1/2" X 36" I. PIPE W/BRASS CAP MKD.:  
28" FIR, N 5° E, 25.3'  
30" FIR, S 43° E, 19.8'
- ⑫ C-N-S 1/64 COR. SEC. 32  
SET: 1 1/2" X 36" I. PIPE W/BRASS CAP MKD.:  
14" FIR, S 78° E, 22.9'  
50" FIR, N 12° W, 37.1'
- ⑬ C-S 1/16 COR. SEC. 32  
SET: 1 1/2" X 36" I. PIPE W/BRASS CAP MKD.:  
35" FIR, N 33° W, 31.1'  
25" FIR, S 68° E, 14.7'
- ⑭ C-E-W-SW 1/256 COR. SEC. 32  
SET: 1 1/2" X 36" I. PIPE W/BRASS CAP MKD.:  
48" FIR, N 52° W, 12.3'  
30" FIR, N 28° E, 30.8'
- ⑮ S. 1/16 COR. SEC'S 31 & 32  
Fd.: U.S.B.L.M. BRASS CAP, "1979"  
20" FIR, N 66 1/2° W, 87.5'  
29" ALDER, N 44 1/2° E, 36.0'
- ⑯ C-E-SW-SW 1/256 COR. SEC. 32  
SET: 1 1/2" X 36" I. PIPE W/BRASS CAP MKD.:  
36" FIR, N 1° E, 56.8'  
36" HEMLOCK, N 87° W, 32.6'
- ⑰ SEC. COR. 4, 5, 32, 33  
Fd.: 2" I. PIPE W/G.L.O. BRASS CAP "1952"  
25" FIR, N 46° E, 34.7'  
31" FIR, S 20° E, 65.4'  
27" FIR STUB, S 86° W, 11.0' (ORIGINAL)  
6" FIR, N 24° W, 36.2'  
30" ALDER, N 16° W, 8.5'
- ⑱ E. 1/16 COR. SEC'S 5 & 32  
Fd.: U.S.B.L.M. BRASS CAP, "1979"  
11" FIR, N 40 1/4° W, 19.1'  
25" FIR, S 12 3/4° E, 9.0'
- ⑲ 1/4 COR. SEC'S 5 & 32  
Fd.: U.S.B.L.M. BRASS CAP, "1979"  
42" FIR, S 77 3/4° W, 103.6'  
NOTE: 1 3/4" I. PIPE (SET BY R. HINTZ IN C.S. No. M56-27 FOR SW. COR. COVT. LOT 7) BEARS N 89° 59' 07" W 98.87' FROM 1/4 COR.
- ⑳ W. 1/16 COR. SEC'S 5 & 32  
Fd.: U.S.B.L.M. BRASS CAP, "1979"  
12" ALDER, N 0 1/2° E, 25.3'  
15" HEMLOCK, S 63 1/2° E, 45.0'
- ㉑ E-W-W 1/256 COR. SEC'S 5 & 32  
Fd.: U.S.B.L.M. BRASS CAP, "1979"  
26" HEMLOCK, N 17° E, 81.8'  
18" HEMLOCK, S 67° E, 52.8'
- ㉒ SEC. COR. 5, 6, 31, 32  
Fd.: U.S.B.L.M. BRASS CAP, "1979"  
16" FIR, N 31 3/4° E, 4.0'  
19" FIR, S 11 1/4° W, 14.7'  
25" FIR, S 52 3/4° W, 20.2'  
12" FIR, N 26 3/4° W, 19.5'

REGISTERED PROFESSIONAL LAND SURVEYOR  
Donald L. Peel  
OREGON DONALD L. PEEL 762

**SURVEY OF SECTION 32, T.19 S., R.10 W., W.M. DOUGLAS COUNTY, OREGON**

FOR INTERNATIONAL PAPER COMPANY

COUNTY SURVEYORS FILE DATA DO NOT REMOVE FROM OFFICE  
BY PEEL BAKER LAND SURVEYING, INC. SEPTEMBER 8, 1982