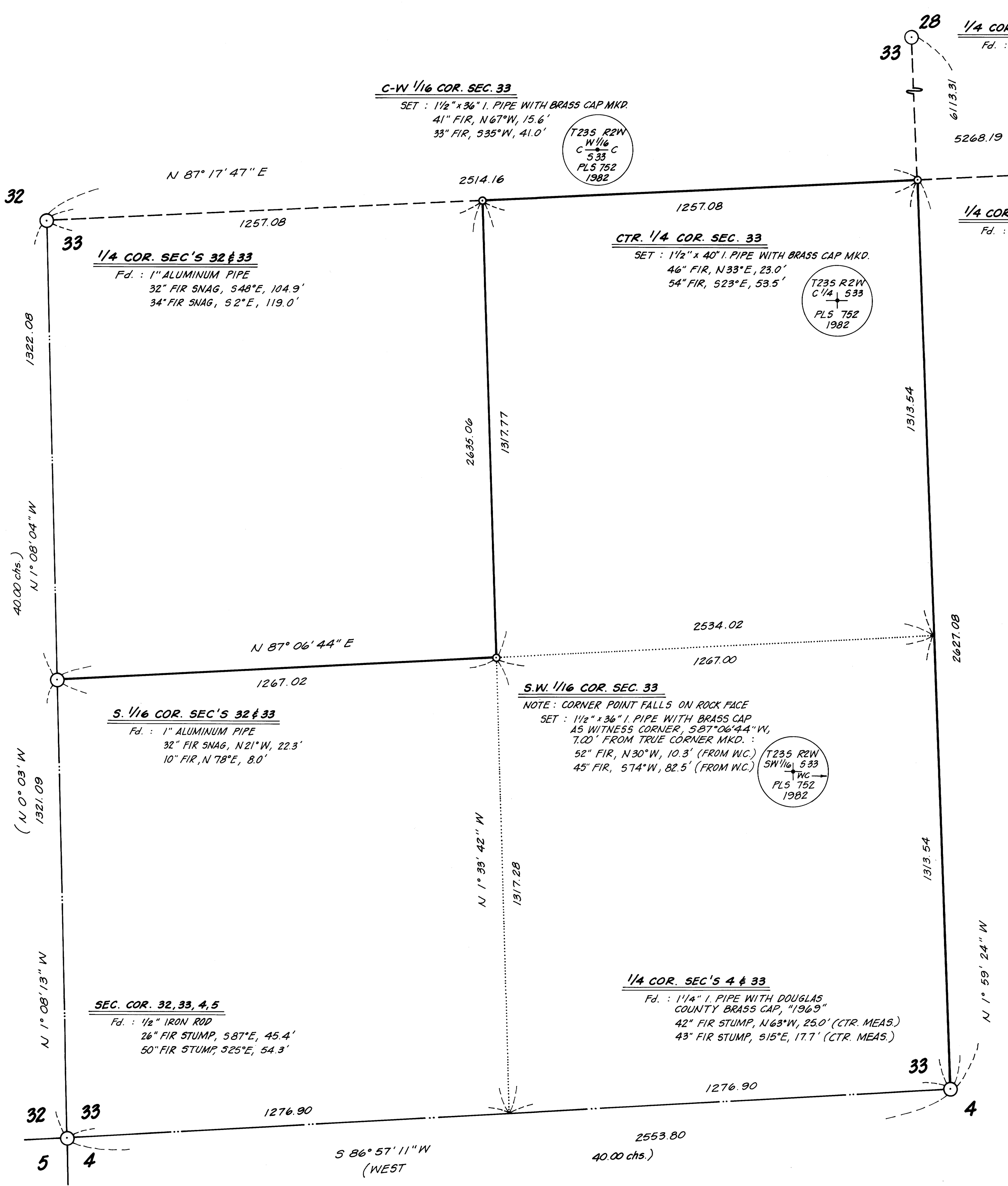


REGISTERED PROFESSIONAL LAND SURVEYOR / Donald L. Peel / OREGON JULY 9, 1968 / DONALD L. PEEL / 752

MAP FILE M. 92 - 78



1/4 COR. SEC'S 28 & 33 / Fd.: HUB & TACK IN CENTER OF LOGGING RD. / 24" CEDAR STUMP, EAST, 69.6' / 54" FIR STUMP, S 20° E, 40.7' / 56" FIR STUMP, N 46 3/4° W, 102.6' (DIST. TO "W" NAIL IN TOP OF STUMP) / Not of Record - Set by WEYERHAEUSER CO. in 1976 FROM ORIG. B.T. STAKE - PEEL, D. Peel. 9/16/82

1/4 COR. SEC'S 33 & 34 / Fd.: 1 1/4" I. PIPE WITH DOUGLAS COUNTY BRASS CAP, "1969" / 30" HEMLOCK, S 31° E, 20.3' / 16" HEMLOCK, S 20° W, 46.3' (CTR. MEAS.) / 60" FIR, S 25 1/2° W, 40.3' / 46" FIR, N 70° W, 26.0' (CTR. MEAS.)

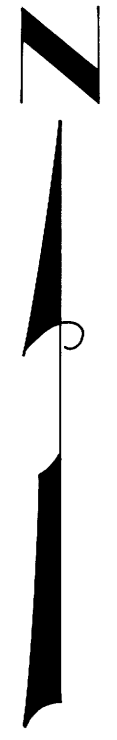
**NARRATIVE:**  
 THIS SURVEY WAS MADE IN AUGUST, 1982 BY DONALD L. PEEL OF PEEL BAKER LAND SURVEYING INC., 1262 LAWRENCE ST., EUGENE, OREGON. THE PURPOSE OF THIS SURVEY WAS TO LOCATE AND MARK THE BOUNDARY LINES OF THE PROPERTY OWNED BY WEYERHAEUSER CO. IN SECTION 33, T.23 S., R.2 W., W.M.. A KERN K15 THEODOLITE AND DM 502 EDM. WERE USED TO PERFORM THIS SURVEY. CLOSED RANDOM TRANSIT TRAVERSES, WITH A MINIMUM ERROR OF CLOSURE OF 1'/30,000', WERE RUN BETWEEN FOUND CORNERS FOR CONTROL. BEARINGS WERE BASED ON A SOLAR OBSERVATION. OFFSETS TO THE TRUE PROPERTY LINE WERE CALCULATED AND USED TO DETERMINE THE POSITION OF THE TRUE LINE. THE TRUE PROPERTY LINE WAS MARKED IN THE FIELD BY BLAZING TREES (NOTCHED BLAZES PAINTED ORANGE) ON BOTH SIDES OF THE TRUE LINE. THE CENTER 1/4 CORNER WAS SET AT THE POINT OF INTERSECTION OF THE NORTH-SOUTH AND EAST-WEST CENTERLINES. THE C-W 1/16 CORNER WAS SET AT MIDPOINT BETWEEN THE CENTER 1/4 CORNER AND THE WEST 1/4 CORNER. THE POSITION FOR THE S.W. 1/16 WAS DETERMINED AT THE POINT OF INTERSECTION OF THE NORTH-SOUTH AND EAST-WEST CENTERLINES OF THE S.W. 1/4. A WITNESS CORNER WAS SET ON THE EAST-WEST CENTERLINE OF THE S.W. 1/4, 7.00 FT. WESTERLY OF THE S.W. 1/16 CORNER. ALL CORNERS SET IN THIS SURVEY WERE MONUMENTED WITH 1 1/2" IRON PIPES WITH BRASS CAPS.

SCALE: 1" = 200'

BASIS OF BEARING: SOLAR OBSERVATION

ALL DISTANCES TO BEARING TREES ARE MEASURED TO A "W" NAIL SET LOW IN THE TREE FACE (UNLESS OTHERWISE NOTED), AND BEARINGS ARE MAGNETIC, VAR. 20°.

- CORNERS FOUND AND USED FOR CONTROL
- ◊ CORNERS SET THIS SURVEY
- PROPERTY LINE BLAZED (NOTCHED BLAZES PAINTED ORANGE)
- ( ) G.L.O. BEARING AND DISTANCE



SURVEY OF / SW 1/4 SECTION 33, T.23 S., R.2 W., W.M. / DOUGLAS COUNTY, OREGON / FOR / WEYERHAEUSER COMPANY / BY / PEEL BAKER LAND SURVEYING, INC. / AUGUST 17, 1982

COUNTY SURVEYORS FILE DATA / DO NOT REMOVE FROM OFFICE

MAP FILE M. 92 - 78