

SECTION CORNER 35.36.1.2

FOUND: 2" I.P. WITH G.L.O. BRASS CAP "1952"
 22" FIR, N57E, 15.0'
 17" FIR, S67E, 24.9'
 17" FIR, S68W, 18.5'
 18" FIR, N48W, 34.1'

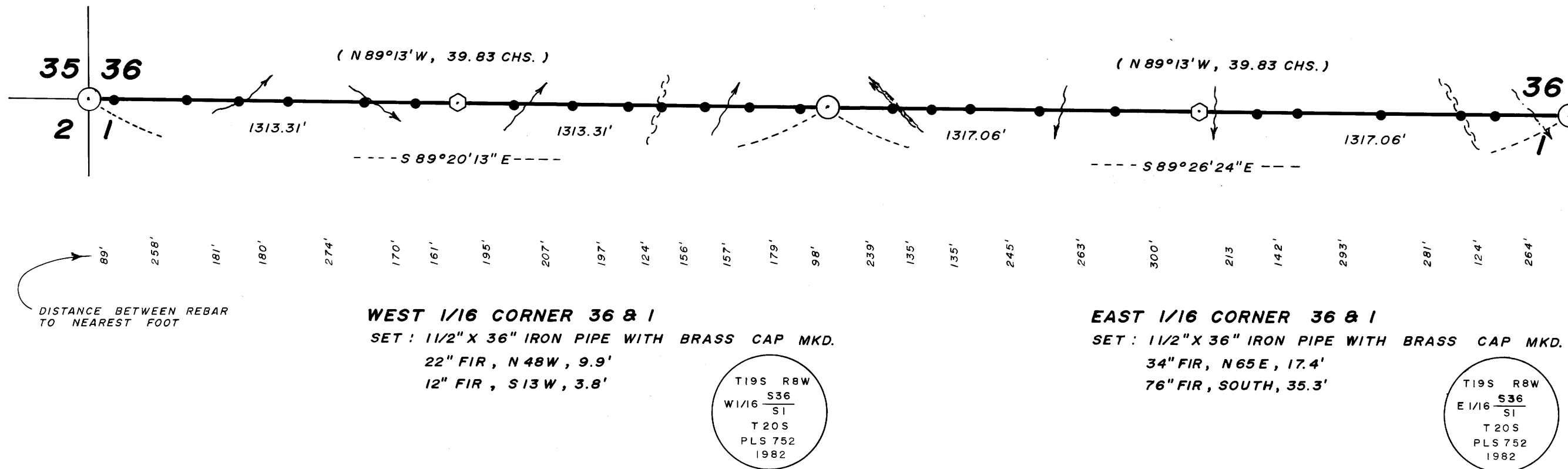
1/4 CORNER 36 & 1

FOUND: 1" I.P. WITH G.L.O. BRASS CAP "1952"
 44" FIR, N49E, 53.2'
 15" FIR, S26 1/2 W, 44.0' (blown down)
 SET: 26" FIR, S36E, 55.4'

SECTION CORNER 36 & 1 ONLY

FOUND: 3 1/2" I.P. WITH G.L.O. BRASS CAP "1949"
 16" FIR, N1W, 20.5'
 18" FIR, S85W, 16.2'

FILED ✓
 RECEIVED *jh*
 SEP 16 1982
 COUNTY SURVEYOR
 DOUGLAS COUNTY, ORE.



NARRATIVE

THIS SURVEY WAS MADE IN JULY AND AUGUST, 1982 BY DONALD L. PEEL OF PEEL BAKER LAND SURVEYING INC., 1262 LAWRENCE ST., EUGENE, OREGON. THE PURPOSE OF THIS SURVEY WAS TO LOCATE AND MARK THE SOUTH LINE OF SECTION 36, T19S, R8W, W.M.. A KERN K1S THEODOLITE AND DM502 E.D.M. WERE USED TO PERFORM THIS SURVEY. A CLOSED RANDOM TRANSIT TRAVERSE, WITH A MINIMUM ERROR OF CLOSURE OF 1'/5000', WAS RUN BETWEEN FOUND CORNERS. BEARINGS WERE BASED ON A SOLAR OBSERVATION. OFFSETS TO THE TRUE PROPERTY LINE WERE CALCULATED AND USED TO DETERMINE THE POSITION OF THE TRUE LINE. THE TRUE PROPERTY LINE WAS MARKED IN THE FIELD BY BLAZING TREES (blazes painted red) ON ONE SIDE OF THE TRUE LINE, AND BY 1/2" X 60" REBAR SET AT RANDOM INTERVALS APPROXIMATELY ON TRUE LINE. THE WEST 1/16 CORNER COMMON TO SECTIONS 36 AND 1 WAS SET AT MIDPOINT BETWEEN THE SOUTHWEST CORNER OF SECTION 36 AND THE SOUTH 1/4 CORNER. THE EAST 1/16 CORNER COMMON TO SECTIONS 36 AND 1 WAS SET AT MIDPOINT BETWEEN THE SOUTHEAST CORNER OF SECTION 36 AND THE SOUTH 1/4 CORNER. THE WEST 1/16 AND EAST 1/16 CORNERS WERE MONUMENTED WITH 1 1/2" X 36" IRON PIPES WITH BRASS CAPS.

BASIS OF BEARING: SOLAR OBSERVATION

SCALE: 1" = 400'

ALL DISTANCES TO BEARING TREES ARE CENTER MEASURE, AND BEARINGS ARE MAGNETIC, VAR. 20°

- CORNERS FOUND AND USED FOR CONTROL
- ⊕ CORNERS SET THIS SURVEY
- 1/2" X 60" REBAR SET
- PROPERTY LINE BLAZED AND POSTED WITH 1/2" X 60" REBAR
- () G.L.O. BEARING AND DISTANCE (1952 SURVEY)

REGISTERED
 PROFESSIONAL
 LAND SURVEYOR

Donald L. Peel

OREGON
 JULY 6, 1966
 DONALD L. PEEL
 752

**SURVEY OF SOUTH LINE
 SECTION 36, T19S, R8W, W.M.
 DOUGLAS COUNTY, OREGON**

FOR
INTERNATIONAL PAPER COMPANY
 BY
PEEL BAKER LAND SURVEYING INC.
 AUGUST 13, 1982

COUNTY SURVEYORS FILE DATA
 DO NOT REMOVE FROM OFFICE

MAP FILE M.22-77

MAP FILE M.22-77