

FILED *ed*
RECEIVED *18*

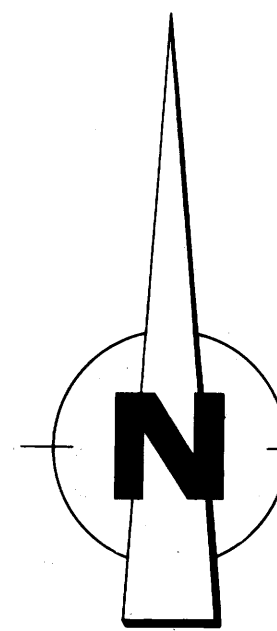
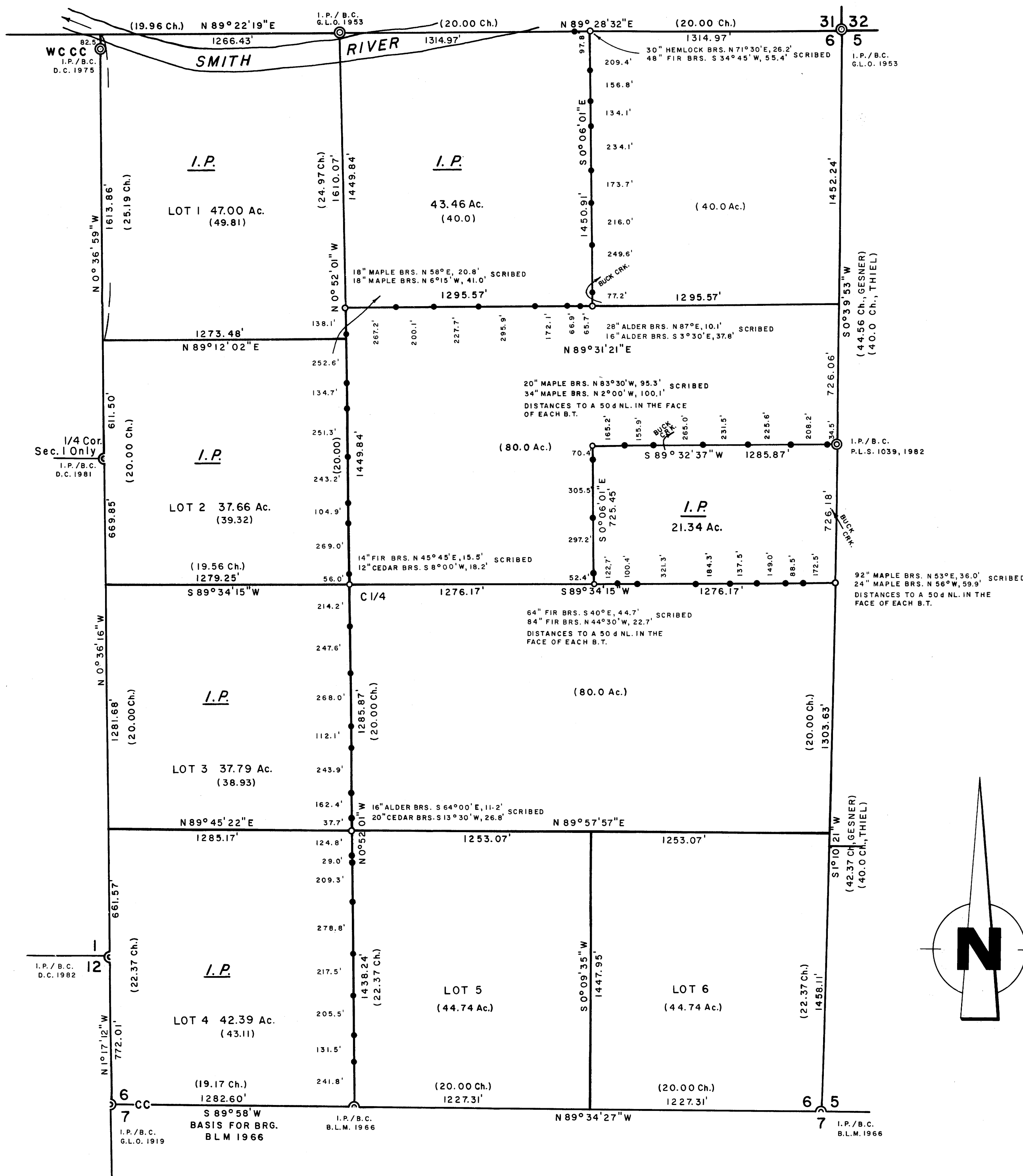
SEP 3 1982

COUNTY SURVEYOR
DOUGLAS COUNTY, ORE.

81

PROPERTY SURVEY FOR INTERNATIONAL PAPER CO.

SEC. 6, T21S, R 9 W
SCALE 1" = 400' AUGUST 1982



LEGEND

CORNERS FOUND \odot
 SET 1 1/4 x 36" I.P.'S / STAMPED BRASS CAPS (P.L.S. 497) \circ
 PROPERTY LINES ESTABLISHED, 1/2 x 60" I.R.'S
 WITH ATTACHED ALUMINUM SIGNS
 (ORIGINAL SURVEY)

NOTES

- DISTANCES ARE TAKEN TO A 50d NAIL IN THE CENTER OF EACH BEARING TREE, UNLESS NOTED
- THIS SURVEY WAS MADE IN ACCORDANCE WITH THE B.L.M. MANUAL OF SURVEY INSTRUCTIONS.
- THE WM. THIEL PLAT, APPROVED JULY 3, 1878, PROTRACTED A STANDARD 160 ACRE SUBDIVISION OF THE NE 1/4 OF SECTION 6. THE ALONZO GESNER PLAT, APPROVED SEPT. 21, 1895, PROTRACTED THE REMAINDER OF THE SECTION WITH LOTS ALONG THE WEST AND SOUTH NUMBERED AS SHOWN ABOVE. GESNER'S RESURVEY OF THE EAST BOUNDARY DID NOT FIND THIEL'S 1/4 CORNER TO BE ON A STRAIGHT LINE BETWEEN THE SECTION CORNERS NOTED BY THE CHANGE IN BEARING FOR MY RE-ESTABLISHMENT.

REGISTERED
PROFESSIONAL
LAND SURVEYOR

Richard J. Hintz

OREGON
MAY 18, 1980
RICHARD J. HINTZ
497

RICHARD J. HINTZ
1890 N. 14th ST.
COOS BAY, OREGON