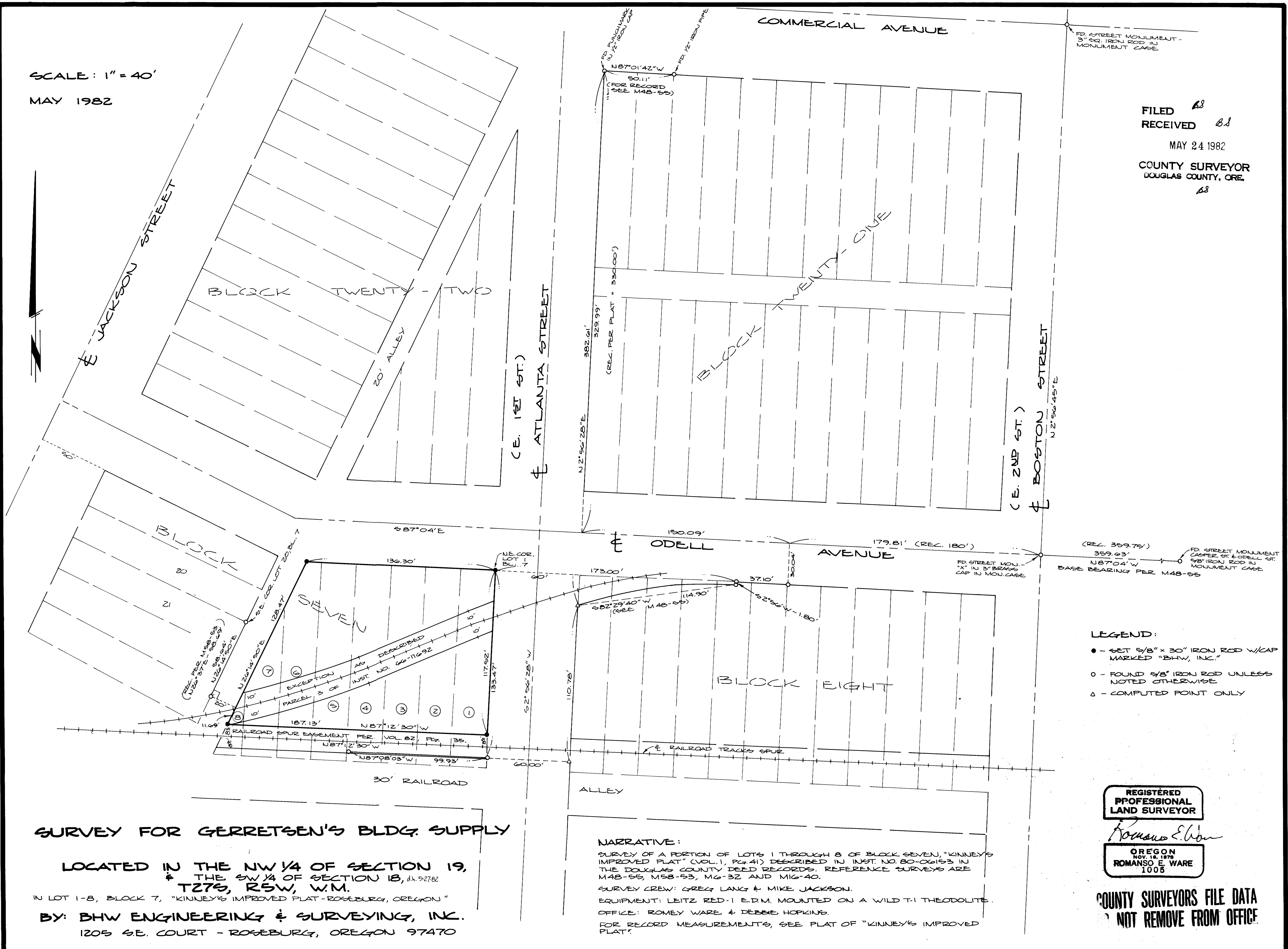


SCALE: 1" = 40'
MAY 1982



FILED *as*
RECEIVED *as*
MAY 24 1982
COUNTY SURVEYOR
DOUGLAS COUNTY, ORE.
as

- LEGEND:
- - SET 5/8" x 30" IRON ROD W/CAP MARKED "BHW, INC."
 - - FOUND 5/8" IRON ROD UNLESS NOTED OTHERWISE
 - △ - COMPUTED POINT ONLY

REGISTERED
PROFESSIONAL
LAND SURVEYOR
Romanso E. Ware
OREGON
NOV. 18, 1979
ROMANSO E. WARE
1008

SURVEY FOR GERRETSEN'S BLDG. SUPPLY

LOCATED IN THE NW 1/4 OF SECTION 19,
& THE SW 1/4 OF SECTION 18, dk. 52782
T27S, R5W, W.M.

IN LOT 1-8, BLOCK 7, "KINNEY'S IMPROVED PLAT - ROSEBURG, OREGON"

BY: BHW ENGINEERING & SURVEYING, INC.
1205 S.E. COURT - ROSEBURG, OREGON 97470

NARRATIVE:

SURVEY OF A PORTION OF LOTS 1 THROUGH 8 OF BLOCK SEVEN, "KINNEY'S IMPROVED PLAT" (VOL. 1, PG. 41) DESCRIBED IN INST. NO. 80-06153 IN THE DOUGLAS COUNTY DEED RECORDS. REFERENCE SURVEYS ARE M48-55, M58-53, M6-32 AND M16-40.
SURVEY CREW: GREG LANG & MIKE JACKSON.
EQUIPMENT: LEITZ RED-1 E.D.M. MOUNTED ON A WILD T-1 THEODOLITE.
OFFICE: ROMEO WARE & DEBBIE HOPKINS.
FOR RECORD MEASUREMENTS, SEE PLAT OF "KINNEY'S IMPROVED PLAT".

COUNTY SURVEYORS FILE DATA
NOT REMOVE FROM OFFICE

MAP FILE M 92-7

MAP FILE M 92-7