

COUNTY SURVEYORS FILE DATA

DO NOT REMOVE FROM FILE

FILED *BS*  
RECEIVED *BS*

AUG 18 1982

COUNTY SURVEYOR  
DOUGLAS COUNTY, ORE  
*BS*

SURVEY IN NE 1/4 OF SECTION 11,  
T26S, R3W, W.M.

FOR: VERN LIESINGER  
BY: BHW ENGINEERING, INC.  
1205 S.E. COURT-ROSEBURG, OR.

LEGEND:

- - SET 5/8" x 30" IRON ROD WITH CAP MARKED "BHW, INC."
- - FOUND MONUMENT AS NOTED
- △ - COMPUTED POINT ONLY

SCALE: 1" = 50'

AUGUST 1982

NARRATIVE:

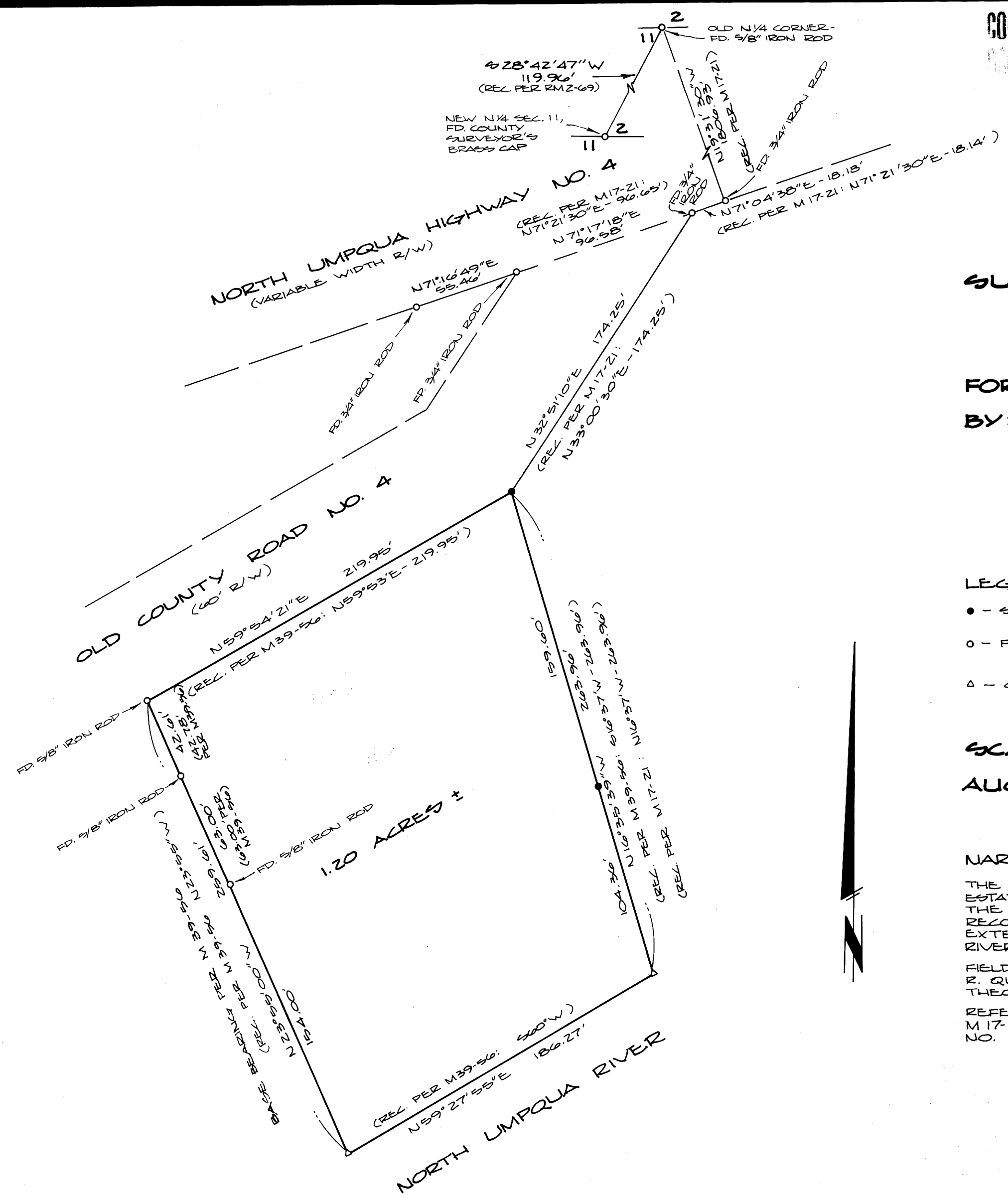
THE MOST NORTHERLY CORNER OF THE PARCEL WAS ESTABLISHED BY A DISTANCE - DISTANCE INTERSECTION. THE EAST LINE OF THE PARCEL WAS ESTABLISHED BY RECORD ANGLE. THE EAST AND WEST LINES WERE EXTENDED RECORD DISTANCE TO THE NORTH LUMPQUA RIVER.

FIELD CREW: G. LANG & N. HIBBS. COMPUTATIONS: R. QUIMBY. DRAFTING: D. HOPKINS. EQUIPMENT: WILD T-1 THEODOLITE & LEITZ RED-1 E.D.M.

REFERENCE SURVEYS: M 39-56 (BASIS OF BEARING), M 17-21 & M 39-55. REFERENCE DEED: INSTRUMENT NO. 81-15977.

REGISTERED  
PROFESSIONAL  
LAND SURVEYOR

*Ronald A. Quimby*  
OREGON  
JULY 14, 1978  
RONALD A. QUIMBY  
1854



MAP FILE M 92-64

MAP FILE M 92-64