

LEGEND

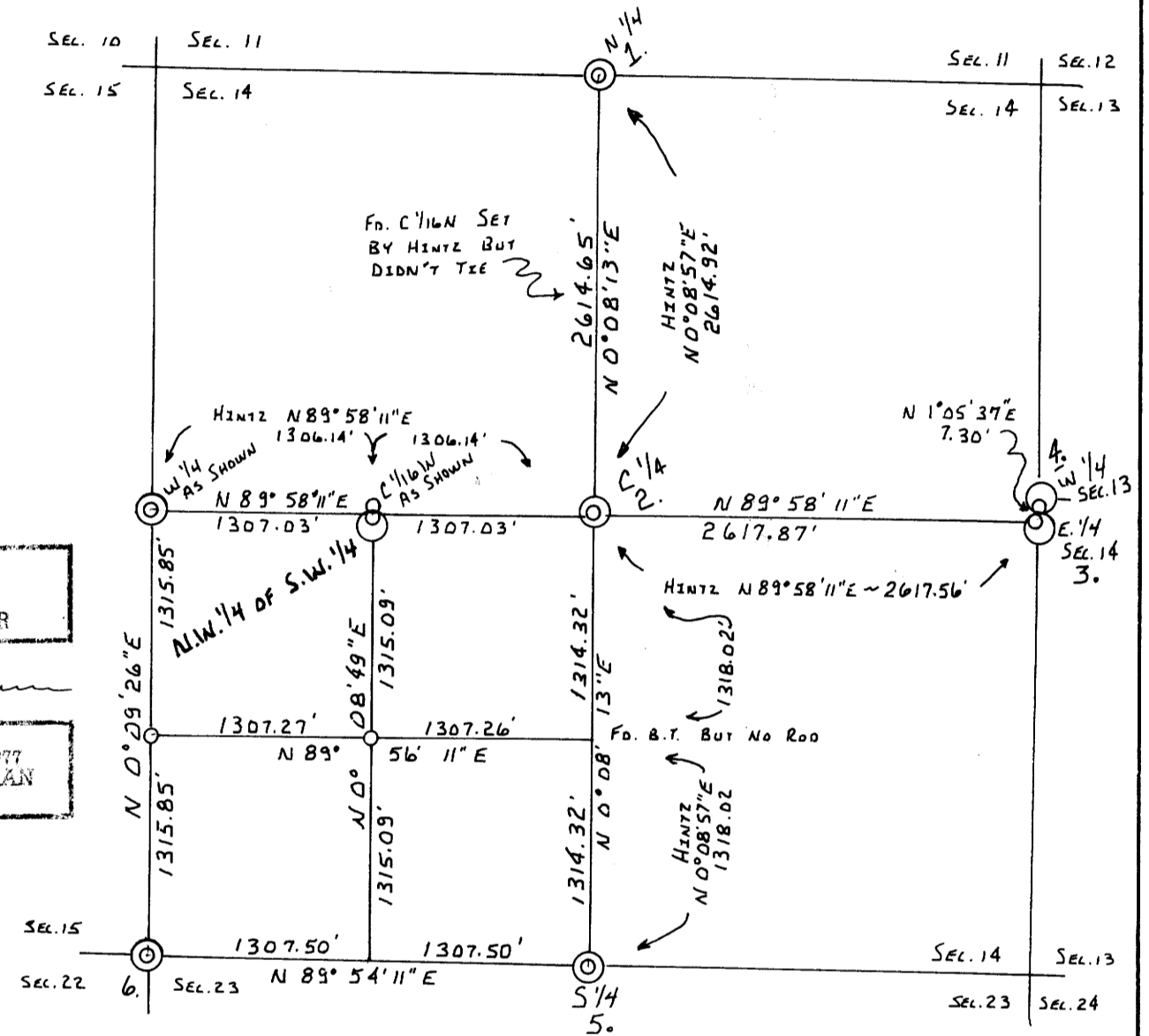
- MONUMENTS FOUND \odot
- MONUMENTS SET \circ AS NOTED
- LINE STAKES \square APPROX. BOUNDARY MARKS
 $\frac{1}{2}$ " REBAR ROD x 5'
PUT PROPERTY LINE TAG ON REBAR WITH
B.T. TREE WITH BLAZE & TAG

LINE BLAZED & FLAGGED

DATES OF BEARING FROM SURVEY BY RICHARD HINTZ (M 46-59)
DATED SEPT. 18, 1972 - I USED THE TOTAL DIST. FROM W 1/4
TO E 1/4 FOR THE BEARING

SCALE: 1" = 100' FOR NW 1/4 OF S.W. 1/4
NO SCALE ON SECT. SUBDIVISION DATE: JULY 23, 1982

WORK DONE BY: LUCKMAN ENGR. & SUR.
Rt. No. 1 Box 565
CORVALLIS, OREGON 97423



FOUND BRASS CAP
WITH B.T.'S
24" D. FIR N 51° E ~ 7.6'
17" D. FIR N 86° W ~ 26.8'
40" D. FIR (DEAD SNAG) S 3° E ~ 58.1'

PROPERTY SURVEY
TRACT LOCATED IN SEC. 14 T.23S.,
R. 8 W. W.M., DOUGLAS COUNTY, OREGON.

FOR: INTERNATIONAL PAPER COMPANY

SURVEY PERFORMED AT REQUEST OF
INTERNATIONAL PAPER CO. TO LOCATE
& POST PROPERTY LINES.

REGISTERED
PROFESSIONAL
LAND SURVEYOR

ROCKNE R. LUCKMAN
OREGON
SEPTEMBER 28, 1977
ROCKNE R. LUCKMAN
1254

N.W. 1/4 of S.W. 1/4
39.5 Ac

1. FOUND BRASS CAP
B.T.'S
18" D. FIR N 84° W ~ 62.0'
(RECORDED 36") D. FIR S 86° W - DIST. NOT CHECKED
DUE TO BEE HIVE
2. FOUND 5/8" ROD WITH
B.T. 12" D. FIR N 42° W ~ 15.7'
HOWEVER - I FOUND THIS POINT
TO BE LOCATED N 69° 06' W A
DIST. 4.66 FT. FROM THE TRUE
CENTER OF SECTION.
3. FOUND BRASS CAP
B.T.'S
15" D. FIR N 61° W ~ 10.0'
8" D. FIR S 88° W ~ 21.8'
36" D. FIR S 79° W ~ 42.0'
7" D. FIR S 30° W ~ 25.4'
4. FOUND BRASS CAP
B.T.'S
22" DEAD MADRONE S 65° E ~ 5.9'
9" FORKED MADRONE S 59° E ~ 36.0'
27" D. FIR N 63° E ~ 32.0'
9" D. FIR N 85° W ~ 10.1'
5. FOUND BRASS CAP
B.T.'S
12" MADRONE S 72° E ~ 32.34'
12" D. FIR N 41° E ~ 54.8'
42" D. FIR N 56° E ~ 9.2'
12" D. FIR S 26° E ~ 42.2'
6. FOUND BRASS CAP
B.T.'S
14" D. FIR S 43° E ~ 24.0'
11" D. FIR N 41° E ~ 54.8'
18" D. FIR S 50° W ~ 24.1'
48" D. FIR N 5° E ~ 15.2'
20" D. FIR N 26° W ~ 40.2'

REQUESTED & RECEIVED NOTES & MAPS FROM DOUGLAS COUNTY SURVEYORS OFFICE.
BEGAN FIELD WORK WITH THEODOLITE AND E.D.M. TRAVERSED & CLOSED THE
S.W. 1/4. - THE BEARING & DIST. DIDN'T CHECK FROM 1/4 LINES WITH
HINTZ SURVEY, THUS, TRAVERSED TO E 1/4 & N 1/4 CORNERS AND BACK.
CALC. SECTION SUBDIVISION - SET C 1/16 W, S.W. 1/16, W 1/16 S CORNER
AND EST. N.W. 1/4 OF S.W. 1/4 LINES.

