

010 5 1982

COUNTY SURVEYOR
DOUGLAS COUNTY, OREGON

BS

M 92-58

LEGEND

Corner found and used for control

Corner set this survey *stamped PLS 1091*

Property line posted this survey

NOTES

- 1) Basis of bearing: solar observation
- 2) All bearings to accessories are magnetic; mean magnetic variation = 20° E
- 3) All distances to bearing trees are measured to the side and center of the tree at the root crown.
- 4) This survey was conducted using a Jena O20A theodolite, a K&E Askania theodolite, a MAC IE EDM, an AGA 76 Geodimeter, and a 300 ft tape.
- 5) Unless otherwise noted, all monuments set are 2-1/2" brass caps on 2-1/2" x 30" galvanized iron pipes.

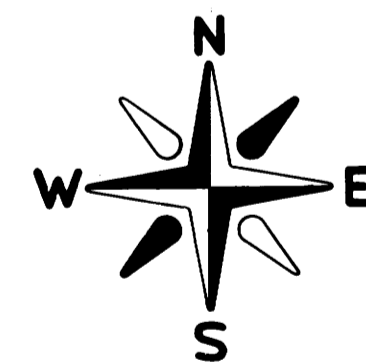
NARRATIVE

This plat and the notes hereon are a correct and accurate representation of a survey conducted in Section 22, T.22S., R.12 W.M. during the period November, 1981 to June, 1982. The survey was conducted to locate and mark the lines defining Champion International Corporation's ownership in Section 22, and to locate the corners defining Douglas County's ownership in Section 22.

No trace of the W 1/4 or E 1/4 being found, these corners were restored by single proportionate measure. The C 1/4 was set at the intersection of the centerlines of the section. The SE 1/16 was set at the intersection of the centerlines of the SE 1/4 of the section. All other 1/16's were set at midpoints.

Closed theodolite traverses were run with a minimum acceptable closure of 1 in 5000. Offsets to true line were calculated, and true property line shown was posted, using 6 ft steel posts set at 300 ft maximum intervals.

Robert B. Ward, jr
Oregon PLS 1091
P.O. Box 37
Mapleton, Oregon 97453



**SURVEY IN
SECTION 22, T.22S., R.12 W., W.M.
DOUGLAS COUNTY, OREGON**

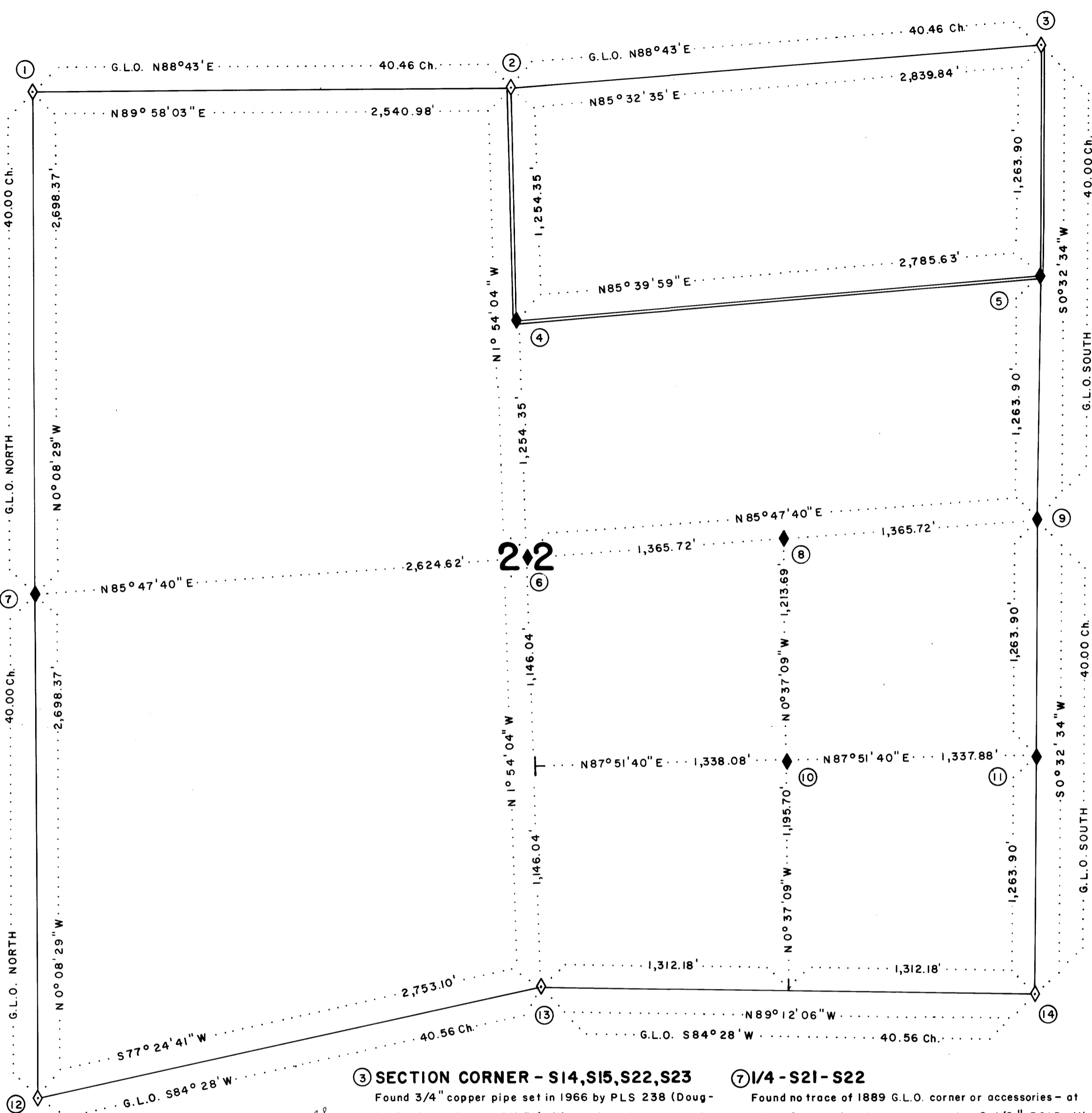
FOR
CHAMPION INTERNATIONAL CORPORATION

AND
DOUGLAS COUNTY
NOV. 1981 - JUNE 1982



COUNTY SURVEYORS FILE DATA
DO NOT REMOVE FROM OFFICE

- 10 SE 1/16 - S22
Set a 2-1/2" BCIP with the following accessories:
80" cedar bears S41°00'E, 20.0 ft (1982 BT)
Scribed SE 1/16 S22 BT
13" alder bears N53°45'E, 7.3 ft (1982 BT)
Bark scribed SE 1/16 S22 BT
- 11 S 1/16 - S22, S23
Set a 2-1/2" BCIP with the following accessories:
56" cedar bears S32°00'W, 64.7 ft (1982 BT)
Scribed S 1/16 S22 BT
23" alder bears S31°00'E, 63.9 ft (1982 BT)
Bark scribed S 1/16 S23 BT
- 12 SECTION CORNER - S21, S22, S27, S28
Found 1" iron pipe set in 1959 by PLS 399 and a 2-1/2" BCIP set in 1973 by Douglas Co. Surveyor's Office (Douglas Co. Corner Renewal #'s 18 and 103) with the following accessories:
Rotted fir stump bears N41°00'E, 13.0 ft (1889 BT)
Rotted fir stump bears N34°00'W, 20.1 ft (1889 BT)
40" fir stump with scribing visible bears S16°00'E, 27.4 ft (1889 BT)
32" fir stump with healed face bears S54°00'W, 25.2 ft (1889 BT)
16" spruce bears S2°30'W, 5.8 ft (1959 BT)
12" spruce bears S68°00'E, 2.5 ft (1959 BT)
18" hemlock bears N30°00'E, 3.5 ft (1959 BT)
16" spruce bears N80°00'W, 15.1 ft (1959 BT)
- 13 1/4 - S22, S27
Found 38" cedar snag with chopped face on north side with the following accessories:
42" fir stump with scribing visible bears N74°00'E, 10.4 ft (1889 BT)
Rotted fir stump bears S80°00'W, 8.5 ft (1889 BT)
Set a 2-1/2" BCIP as a witness with the following accessories:
15" fir bears N87°30'E, 20.2 ft (1982 BT)
60" fir bears N0°30'E, 43.3 ft (1982 BT)
Both scribed X BT
Corner tree bears N89°12'06"W, 21.04 ft
NOTE: corner as called by PLS 399 and Douglas Co. Surveyor's Office (Douglas Co. Corner Renewal #'s 19 and 104) bears S4°07'44"W, 359.34 ft
- 14 SECTION CORNER - S22, S23, S26, S27
Found 3" BCIP set in 1969 by PLS 359 (Douglas Co. Corner Renewal # 58) with the following accessories:
67" cedar bears N36°00'E, 30.3 ft (1879 BT)
20" alder bears N40°30'W, 70.3 ft (1969 BT)
20" alder bears S12°00'E, 32.5 ft (1969 BT)
Marked sandstone face bears S20°30'W, 31.5 ft (1969 B0)



- 1 SECTION CORNER - S15, S16, S22, S23
Found 35" cedar stump with scribing visible on reverse of face, and 26" cedar in position for the SE BT. NE and SW BT's are missing. At the point of intersection of the record distances, set a 2-1/2" BCIP with the following accessories:
35" cedar stump bears N44°30'W, 7.3 ft. (1889 BT)
26" cedar bears S20°00'E, 15.8 ft. (1889 BT)
16" fir bears N76°00'E, 13.9 ft. (1982 BT)
Scribed T22S R12W S15 BT
12" fir bears S32°00'W, 5.2 ft. (1982 BT)
Scribed T22S R12WS21 BT
- 2 1/4 - S15, S22
Found both fir BT's with scribing visible. Set a 2-1/2" BCIP with the following accessories:
32" fir stump bears N8°00'W, 8.6 ft. (1889 BT)
40" fir stump bears S83°00'W, 7.9 ft. (1889 BT)
14" spruce bears N62°00'W, 21.1 ft. (1982 BT)
Scribed 1/4 S15 BT
11" spruce bears S65°00'W, 32.2 ft. (1982 BT)
Scribed 1/4 S22 BT
- 3 SECTION CORNER - S14, S15, S22, S23
Found 3/4" copper pipe set in 1966 by PLS 238 (Douglas Co. Corner Renewal # 51) with the following accessories:
40" fir with healed face bears N21°00'W, 17.7 ft (1966 BT)
40" fir with healed face bears S31°00'E, 17.2 ft (1966 BT)
- 4 CN 1/16 - S22
Set a 2-1/2" BCIP with the following accessories:
23" hemlock bears N20°30'E, 9.6 ft (1982 BT)
15" fir bears S14°30'E, 22.6 ft (1982 BT)
Both scribed CN 1/16 S22 BT
- 5 NI/16 - S21, S22
Set a 2-1/2" BC cemented into a sandstone outcrop with the following accessories:
17" alder bears N30°00'W, 25.9 ft (1982 BT)
Bark scribed NI 1/16 S22 BT
22" alder bears N47°30'E, 38.8 ft (1982 BT)
Bark scribed NI 1/16 S23 BT
- 6 C 1/4 - S22
Set a 2-1/2" BCIP with the following accessories:
12" alder bears N31°30'W, 5.4 ft (1982 BT)
Bark scribed C 1/4 S22 BT
34" cedar bears S73°00'E, 18.4 ft (1982 BT)
Scribed C 1/4 S22 BT
- 7 1/4 - S21 - S22
Found no trace of 1889 G.L.O. corner or accessories - at point of proportionate measure, set a 2-1/2" BCIP with the following accessories:
13" fir bears N72°00'W, 14.5 ft (1982 BT)
Scribed 1/4 S21 BT
13" fir bears S13°00'E, 8.3 ft (1982 BT)
Scribed 1/4 S22 BT
- 8 CE 1/16 - S22
Set a 2-1/2" BCIP with the following accessories:
10" alder bears S10°00'W, 13.0 ft (1982 BT)
11" alder bears N89°00'W, 21.8 ft (1982 BT)
Both bark scribed CE 1/16 S22 BT
- 9 1/4 - S22, S23
Found no trace of 1879 G.L.O. corner or accessories - at point of proportionate measure, set a 2-1/2" BCIP with the following accessories:
22" alder bears S75°30'W, 9.9 ft (1982 BT)
Bark scribed 1/4 S22 BT
21" alder bears N12°00'E, 42.4 ft (1982 BT)
Bark scribed 1/4 S23 BT

MAP FILE *M* 92-58