

PROPERTY SURVEY

COUNTY SURVEYORS FILE DATA

DO NOT REMOVE FROM OFFICE

TRACT LOCATED IN W 1/2, SEC. 32,
T. 22 S., R. 8 W.W.M., DOUGLAS COUNTY
OREGON.

FILED *BS*
RECEIVED *JS*

AUG 4 1982

FOR: INTERNATIONAL PAPER COMPANY

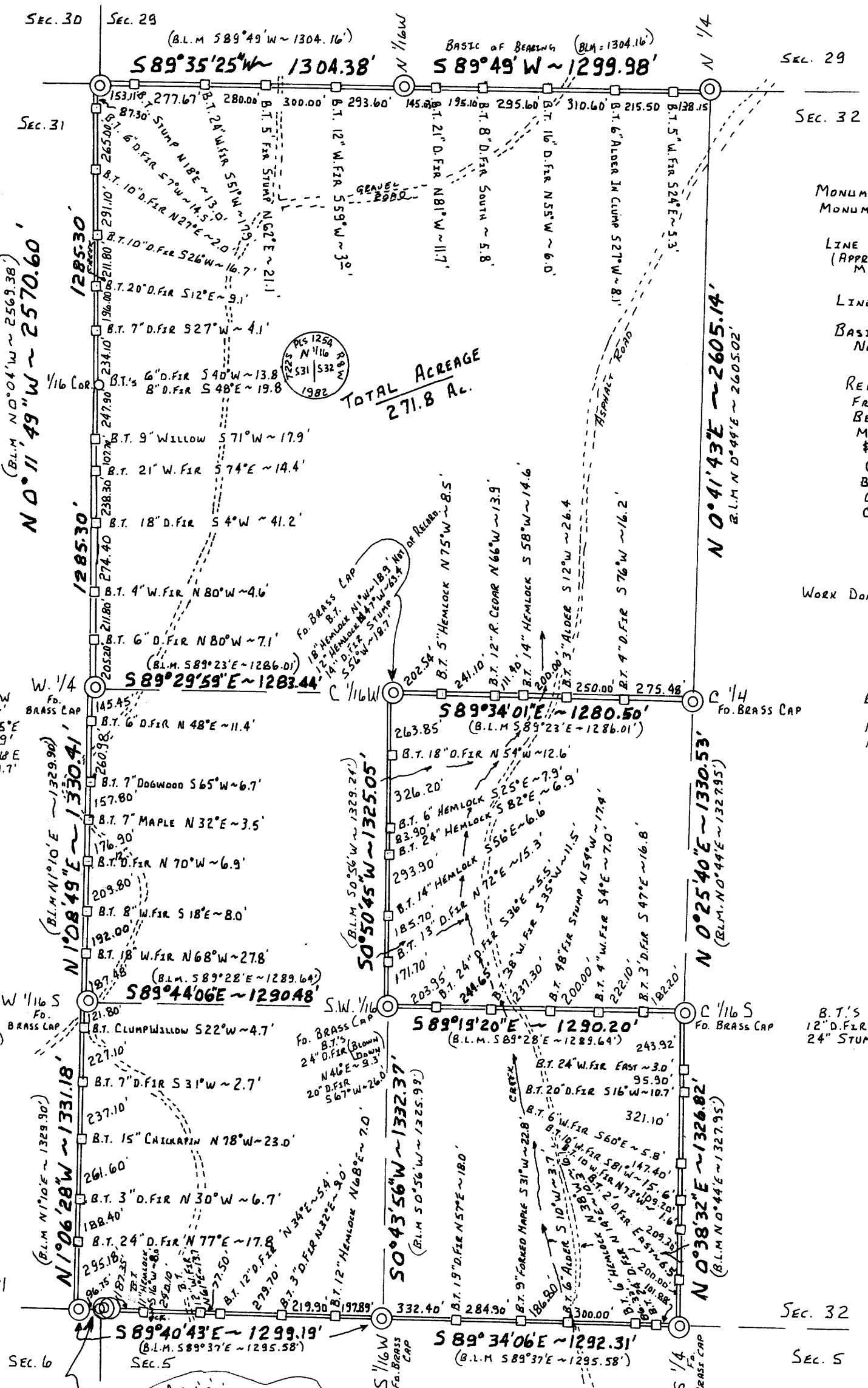
SURVEY PERFORMED AT REQUEST OF
INTERNATIONAL PAPER CO. TO LOCATED
POSTED PROPERTY LINES

COUNTY SURVEYOR
DOUGLAS COUNTY, ORE.
BS

Fo. BRASS CAP
B.T.'S
30" D. FIR N 18° E ~ 24.8'
9" D. FIR N 70° W ~ 43.8'
12" D. FIR S 80° W ~ 43.4'
13" W. FIR S 17° E ~ 11.1'

N 1/16 W
Fo. BRASS CAP
B.T.'S
24" D. FIR N 87° E ~ 29'
22" D. FIR S 2° W ~ 30'

N 1/4
Fo. BRASS CAP
B.T.
9" D. FIR N 56° W ~ 15.0' NOT OF RECORD
27" D. FIR (RECORDED 16") S 60° W ~ 148.75' (CAT FACE & TAG)
12" CHINGUAPIN (REC. 5") N 64° W ~ 58' (NO BLAZE OR TAG BUT RIBBON STAKING OUT OF BARK)



LEGEND

- MONUMENT FOUND (circle with dot)
- MONUMENT SET (circle with dot) 1 1/2" G. PIPE x 3' WITH BRASS CAP PUT ON TOP
- LINE STAKES (square) 1/2" REBAR ROD x 5' PUT PROPERTY LINE TAG ON REBAR WITH B.T. TREE WITH BLAZE & TAG
- (APPROX. BOUNDARY) MARKS
- LINE BLAZED & FLAGGED (double line)

BASIS OF BEARING FROM B.L.M.
NOTE OF BEARING FROM N 1/4 TO N 1/16 W

REQUESTED & RECEIVED NOTES & MAPS FROM DOUGLAS COUNTY SURVEYORS OFFICE BEGAN FIELD WORK AT N 1/4 - LOCATED MONUMENTS ON GROUND - USED THEODOLITE & E.D.M TO TRAVERSE FROM N 1/4 COUNTER-CLOCK WISE ALONG LINE TO BE POSTED TO C 1/4 TIEING POINTS. CLOSED TRAVERSE TO N 1/4. CALL OFF-SET POINTS & 1/16 COR. TO BE SET. SET POINTS, BLAZED, & FLAGGED LINE.

WORK DONE BY: LUCKMAN ENGINEERING & SURVEYING
Rt. No. 1, Box 565
COQUILLE, OREGON

B.T.
3" FIR N 22° W ~ 9.8' (NOT OF RECORDED)
19" HEMLOCK (NOW STUMP W/TAG) S 38° E ~ 66.0'
17" FIR (NOW SNAG W/BLAZE) N 24 1/2° W ~ 66.0'

SCALE: 1" = 500'

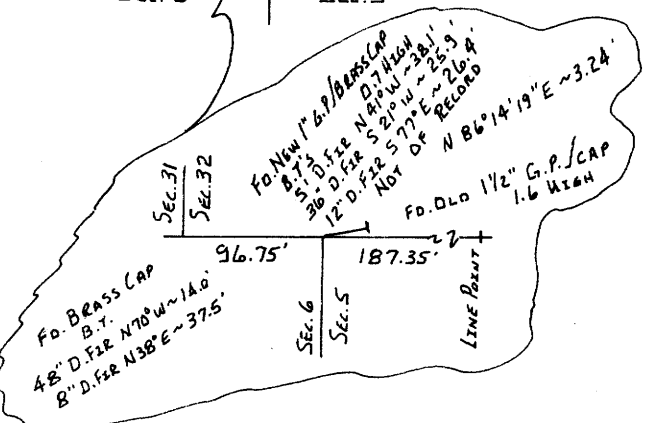
DATE: JUNE 10, 1982

B.T.'S
12" D. FIR S 87° E ~ 50.4'
24" STUMP N 36° W ~ 19.1'

REGISTERED
PROFESSIONAL
LAND SURVEYOR

Rockne R. Luckman

OREGON
SEPTEMBER 23, 1977
ROCKNE R. LUCKMAN
1254



S 1/16 W
B.T.'S
12" MAPLE N 58° W ~ 24.5'
26" D. FIR N 4° E ~ 21.2'
FORKED MAPLE S 34° W ~ 8.3' NOT OF RECORD

S 1/4
B.T.'S
20" D. FIR SOUTH ~ 6'
38" D. FIR N 35° E ~ 16.4'