

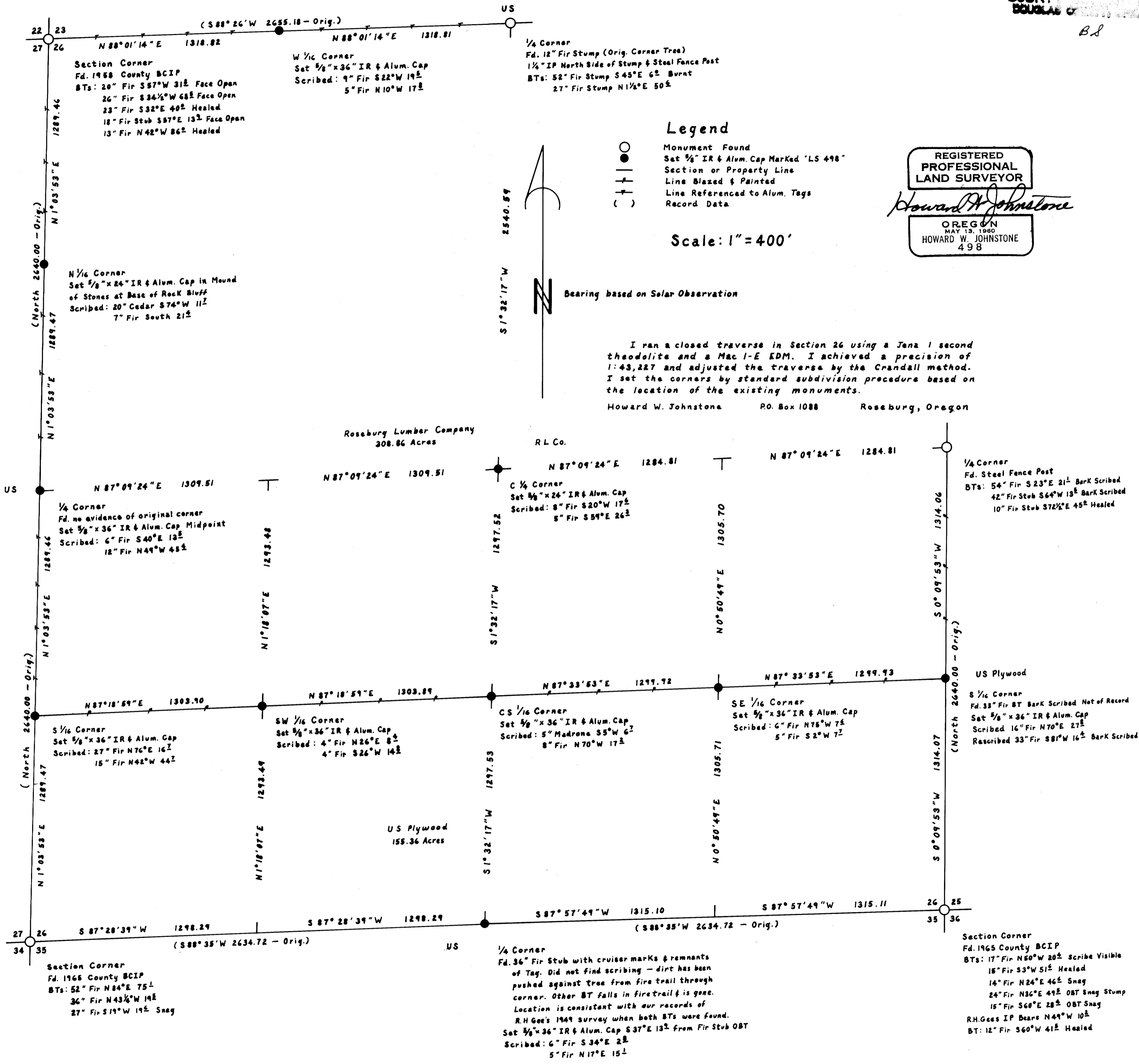
Resurvey And Subdivision of S 1/2 & NW 1/4 Section 26, T30S, R8W, W.M.  
For Roseburg Lumber Company

June 30, 1982

FILE B.S.  
RECEIVED J.R.  
AUG 8 1982

COUNTY  
DOUGLAS

B.S.



Legend

- Monument Found
- Set 5/8" IR & Alum. Cap Marked "LS 498"
- Section or Property Line
- Line Blazed & Painted
- Line Referenced to Alum. Tags
- ( ) Record Data

REGISTERED  
PROFESSIONAL  
LAND SURVEYOR

*Howard W. Johnstone*

OREGON  
MAY 15, 1980  
HOWARD W. JOHNSTONE  
498

Scale: 1" = 400'

Bearing based on Solar Observation

I ran a closed traverse in Section 26 using a Jena 1 second theodolite and a Mac I-E EDM. I achieved a precision of 1:43,227 and adjusted the traverse by the Crandall method. I set the corners by standard subdivision procedure based on the location of the existing monuments.

Howard W. Johnstone P.O. Box 1088 Roseburg, Oregon

1/4 Corner  
Fd. Steel Fence Post  
BTs: 54" Fir S 23° E 21" Bark Scribed  
42" Fir Stub S 64° W 13" Bark Scribed  
10" Fir Stub S 72 1/2° E 45" Healed

US Plywood  
S 1/6 Corner  
Fd. 33" Fir BT Bark Scribed Not of Record  
Set 5/8" x 36" IR & Alum. Cap  
Scribed 16" Fir N 70° E 27"  
Rescribed 33" Fir S 81° W 16" Bark Scribed

Section Corner  
Fd. 1965 County BCIP  
BTs: 17" Fir N 50° W 20" Scribe Visible  
15" Fir S 3° W 51" Healed  
14" Fir N 24° E 46" Snag  
24" Fir N 36° E 49" OBT Snag Stump  
15" Fir S 60° E 28" OBT Snag  
R.H. Gees IP Bears N 49° W 10"  
BT: 12" Fir S 60° W 41" Healed