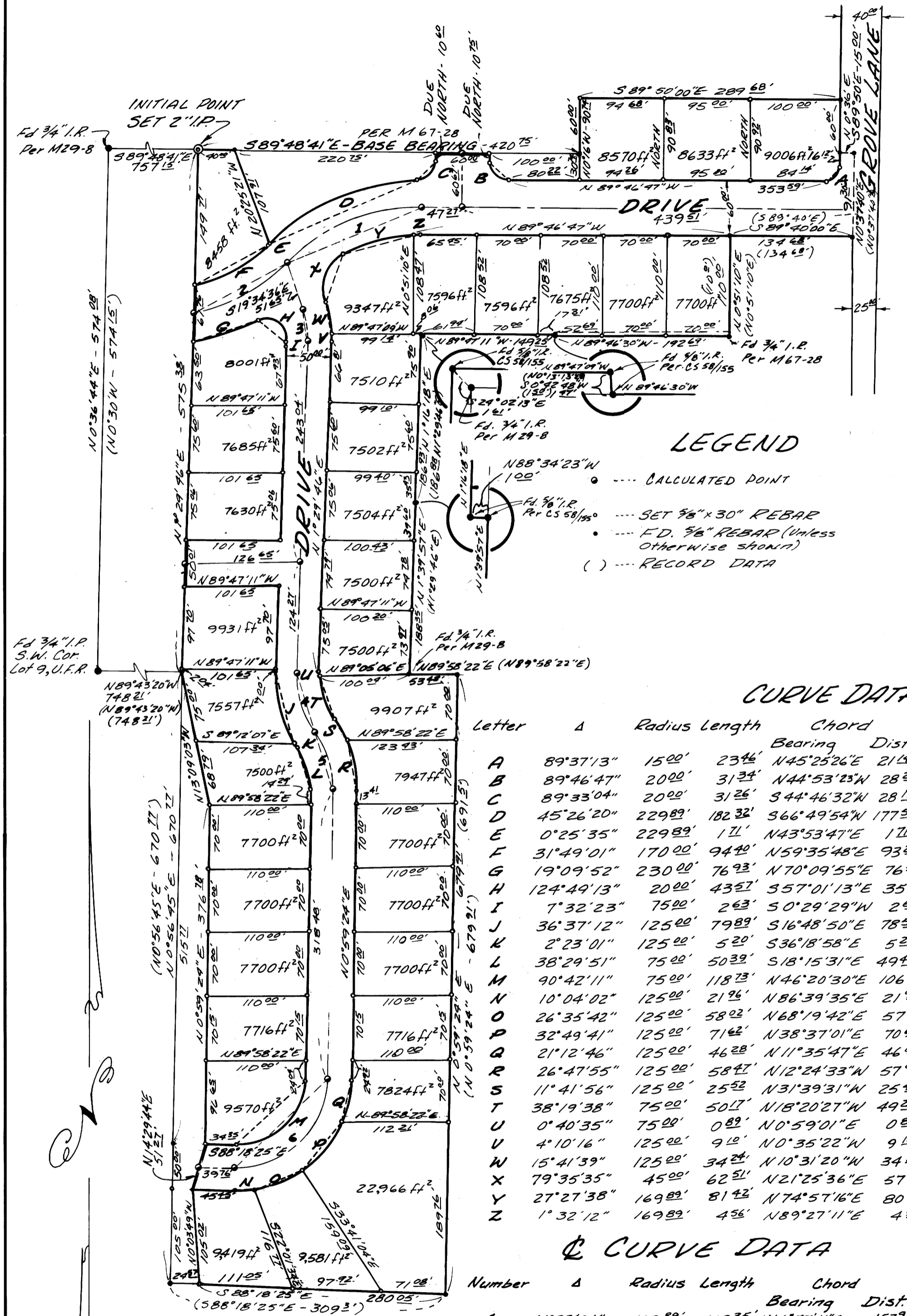


COUNTY SURVEYORS FILE DATA
DO NOT REMOVE FROM OFFICE

FILE 83
88
B.S.



PROPERTY SURVEY
IN N.E. 1/4 SEC. 15, T. 27 S., R. 6 W., W.M.
DOUGLAS COUNTY, OREGON
FOR MIKE AUSTIN

BY ALPHA & OMEGA ENGINEERS INC.
MARCH, 1979 - JULY, 1982
SCALE: 1"=100'

LEGEND
 ○ --- CALCULATED POINT
 --- SET 3/8" x 30" REBAR
 --- F.D. 5/8" REBAR (Unless otherwise shown)
 () --- RECORD DATA

CURVE DATA

Letter	Δ	Radius	Length	Chord	Bearing	Dist.
A	89°37'13"	1500'	234'	N45°25'26"E	214'	
B	89°46'47"	2000'	313'	N44°53'23"W	282'	
C	89°33'04"	2000'	312'	S44°46'32"W	282'	
D	45°26'20"	22989'	1823'	S66°49'54"W	1775'	
E	0°25'35"	22989'	171'	N43°53'47"E	171'	
F	31°49'01"	17000'	944'	N59°35'48"E	932'	
G	19°09'52"	23000'	769'	N70°09'55"E	765'	
H	124°49'13"	2000'	432'	S57°01'13"E	354'	
I	7°32'23"	7500'	263'	S0°29'29"W	263'	
J	36°37'12"	12500'	798'	S16°48'50"E	785'	
K	2°23'01"	12500'	52'	S36°18'58"E	52'	
L	38°29'51"	7500'	503'	S18°15'31"E	494'	
M	90°42'11"	7500'	1183'	N46°20'30"E	1067'	
N	10°04'02"	12500'	219'	N86°39'35"E	219'	
O	26°35'42"	12500'	582'	N68°19'42"E	572'	
P	32°49'41"	12500'	712'	N38°37'01"E	704'	
Q	21°12'46"	12500'	462'	N11°35'47"E	462'	
R	26°47'55"	12500'	584'	N12°24'33"W	579'	
S	11°41'56"	12500'	252'	N31°39'31"W	254'	
T	38°19'38"	7500'	507'	N18°20'27"W	492'	
U	0°40'35"	7500'	089'	N0°59'01"E	089'	
V	4°10'16"	12500'	91'	N0°35'22"W	91'	
W	15°41'39"	12500'	342'	N10°31'20"W	344'	
X	79°35'35"	4500'	622'	N21°25'36"E	574'	
Y	27°27'38"	16989'	814'	N74°57'16"E	806'	
Z	1°32'12"	16989'	456'	N89°27'11"E	456'	

Q CURVE DATA

Number	Δ	Radius	Length	Chord	Bearing	Dist.
1	46°32'04"	19989'	1623'	N66°57'11"E	1572'	
2	34°15'58"	20000'	1196'	N60°49'08"E	1178'	
3	21°04'22"	10000'	367'	S9°02'25"E	365'	
4	39°00'13"	10000'	682'	S18°00'20"E	667'	
5	38°29'51"	10000'	671'	S18°15'32"E	659'	
6	90°42'11"	10000'	1583'	S46°20'30"W	1422'	

REGISTERED PROFESSIONAL LAND SURVEYOR
Russell T. Pinard
 OREGON
 JULY 16, 1971
 RUSSELL T. PINARD
 958

REGISTERED PROFESSIONAL LAND SURVEYOR
Roderick B. Kimberling
 OREGON
 JULY 13, 1980
 RODERICK B. KIMBERLING
 1303

ALPHA & OMEGA ENGINEERS, INC.
1622 N.E. VINE STREET
ROSEBURG, OREGON

NARRATIVE

This survey was originally named Loma Vista Subdivision, Phase I. The original developers sold it, and the new owner have decided to wait, considering today's economy.

The boundaries are controlled by the found monuments shown, as surveyed by M 29-8 and C 5 58/155. The northern section of our survey was done from deed description, Ref. No. 81-00347

We used a 1 minute transit and 300' chain.

MAP FILE M 29-8