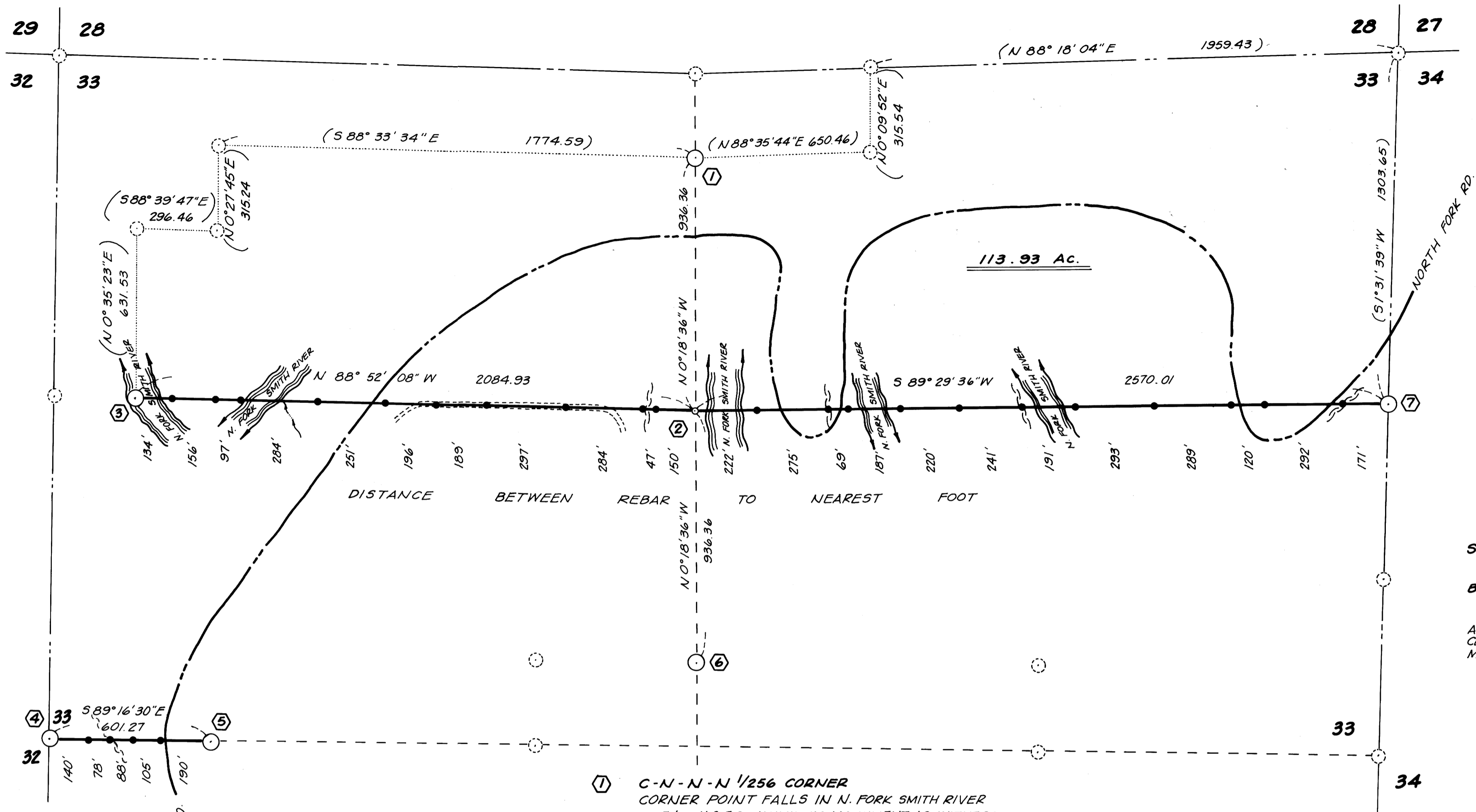


FILED *ed*  
 RECEIVED *ed*  
 JUL 30 1982  
 COUNTY SURVEYOR  
 DOUGLAS COUNTY  
*BS*

C.S. FILE NO. 58-1274(A)  
 MAP FILE NO. 22-49

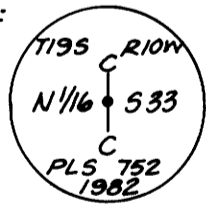


SCALE: 1" = 300'  
 BASIS OF BEARING: C.S. No. M85-46  
 ALL DISTANCES TO BEARING TREES ARE CENTER MEASURE, AND BEARINGS ARE MAGNETIC, VAR. 20°

**NARRATIVE:**

THIS SURVEY WAS MADE IN JULY, 1982 BY DONALD L. PEEL OF PEEL BAKER LAND SURVEYING, INC., 1262 LAWRENCE ST., EUGENE, OREGON. THE PURPOSE OF THIS SURVEY WAS TO LOCATE AND MARK THE BOUNDARY LINES (THAT HAD NOT BEEN PREVIOUSLY SURVEYED AND MARKED) OF THE PROPERTY OWNED BY INTERNATIONAL PAPER COMPANY IN THE NORTH HALF OF SECTION 33, T19S, R10W, W.M.. A KERN K15 THEODOLITE AND DM 502 E.D.M. WERE USED TO PERFORM THIS SURVEY. THIS SURVEY WAS AN EXTENSION OF A SURVEY I MADE FOR THE U.S. FOREST SERVICE IN SEPTEMBER, 1980, COUNTY SURVEY FILE NO. M85-46. THE SURVEY POINTS I HAD PREVIOUSLY ESTABLISHED (C.S. No. M85-46) WERE RECOVERED AND USED FOR CONTROL, THUS THE BASIS OF BEARING IS C.S. No. M85-46. A CLOSED RANDOM TRANSIT TRAVERSE, WITH A MINIMUM ERROR OF CLOSURE OF 1/5000' WAS RUN BETWEEN FOUND CORNERS. OFFSETS TO THE TRUE PROPERTY LINE WERE CALCULATED AND USED TO DETERMINE THE POSITION OF THE TRUE LINE. THE TRUE LINE WAS MARKED IN THE FIELD BY BLAZING TREES (BLAZES PAINTED RED) ON ONE SIDE OF TRUE LINE, AND BY 1/2" x 60" REBAR SET AT RANDOM INTERVALS APPROXIMATELY ON TRUE LINE. THE C-N 1/16 CORNER WAS SET AT MIDPOINT BETWEEN THE C-N-N-N 1/256 CORNER AND THE C-S-S-N 1/256 CORNER. THE C-N 1/16 CORNER WAS MONUMENTED WITH A 1/2" x 36" IRON PIPE WITH BRASS CAP.

- ① C-N-N-N 1/256 CORNER  
 CORNER POINT FALLS IN N. FORK SMITH RIVER  
 Fd: U.S.F.S. ALUMINUM MONUMENT AS WITNESS CORNER, N88°35'44"E, 35.00' FROM CORNER POINT
- ② C-N 1/16 CORNER  
 SET: 1 1/2" x 36" I. PIPE WITH BRASS CAP MKD.:  
 20" DOUBLE MAPLE, N1°W, 51.0'  
 22" ALDER, S88 1/2°W, 21.4' (BARK SCRIBED)
- ③ C-W-W-NW 1/256 CORNER  
 CORNER POINT FALLS IN N. FORK SMITH RIVER  
 Fd: U.S.F.S. ALUMINUM MONUMENT AS WITNESS CORNER, N88°52'08"W, 59.00' FROM CORNER POINT
- ④ 1/4 CORNER SEC'S 32 & 33  
 Fd: 1 1/4" I. PIPE W/DOUGLAS CO. BRASS CAP, 1969  
 24" FIR, S40 1/2°E, 11.0' (BARK SCRIBED)  
 27" FIR, S39 1/2°W, 7.2' (BARK SCRIBED)
- ⑤ C-W-W 1/64 CORNER  
 Fd: 2 1/2" BRASS TABLET IN ROCK  
 13" ALDER, N24°E, 3.7' (BARK SCRIBED)  
 10" ALDER, S16°W, 23.0' (BARK SCRIBED)
- ⑥ C-S-S-N 1/256 CORNER  
 Fd: U.S.F.S. ALUMINUM MONUMENT  
 48" FIR, N54°W, 28.4'  
 11" FIR, S8°W, 1.6'
- ⑦ N. 1/16 CORNER SEC'S 33 & 34  
 Fd: U.S.F.S. ALUMINUM MONUMENT  
 28" FIR, N2°E, 42.9'  
 44" FIR, S45°W, 47.9'



- CORNERS FOUND AND USED FOR CONTROL
- ◊ CORNER SET THIS SURVEY
- ⊙ CORNERS SET AND/OR TIED IN C.S. No. M85-46 (NOT TIED THIS SURVEY)
- 1/2" x 60" REBAR SET
- PROPERTY LINE BLAZED AND POSTED WITH 1/2" x 60" REBAR
- ( ) BEARING AND DISTANCE FROM C.S. No. M85-46
- INTERNATIONAL PAPER COMPANY PROPERTY LINE ESTABLISHED IN C.S. No. M85-46

REGISTERED  
 PROFESSIONAL  
 LAND SURVEYOR

*Donald L. Peel*

OREGON  
 JULY 8, 1968  
 DONALD L. PEEL  
 752

**SURVEY IN  
 N1/2 SECTION 33, T19S, R10W, W.M.  
 DOUGLAS COUNTY, OREGON  
 FOR  
 INTERNATIONAL PAPER COMPANY  
 BY  
 PEEL BAKER LAND SURVEYING INC.  
 JULY 21, 1982**

COUNTY SURVEYORS FILE DATA  
 DO NOT REMOVE FROM OFFICE

C.S. FILE NO. 58-1274(A)  
 MAP FILE NO. 22-49

M 92-48 ; M 92-49

PEEL BAKER LAND SURVEYING, INC.

1262 Lawrence Street, Suite 4  
EUGENE, OREGON 97401  
Telephone: (503) 343-7243

Home Telephones:  
Don Peel, PLS 344-1828  
Dan Baker 484-2734

July 28, 1982

FILED  
RECEIVED *BS*

JUL 30 1982

Douglas County Surveyor  
Room 205--Justice Building  
Roseburg, OR 97470

COUNTY SURVEYOR  
DOUGLAS COUNTY, ORE.

Attention: Mr. Larry E. Monrean

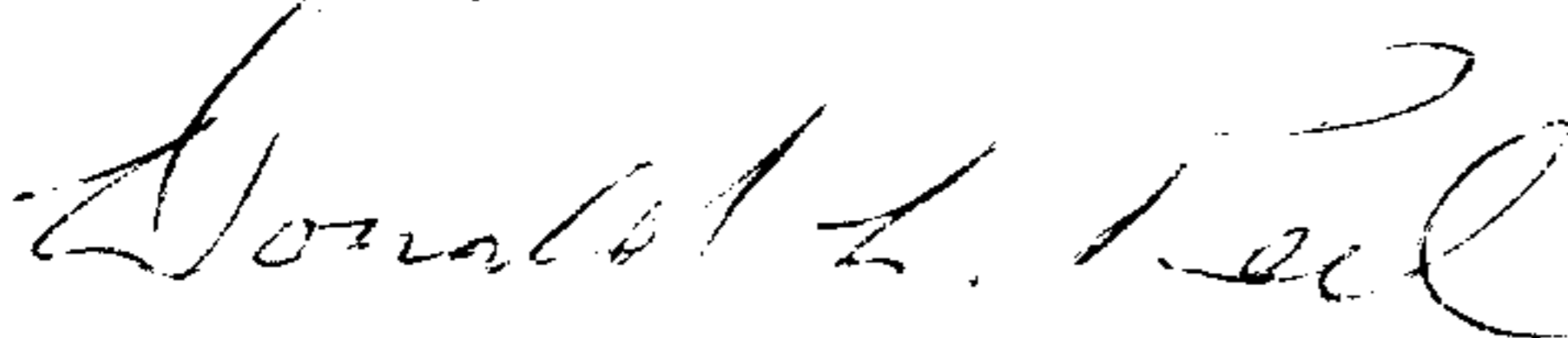
Dear Mr. Monrean:

Enclosed find two survey plats to be filed for record.

1. Section 26, T21S, R6W, W.M. I have made your suggested corrections.
2. Section 33, T19S, R10W, W.M., with a \$10.00 check to cover the filing fee.

Concerning the 1/2" x 60" rebar you mentioned, I can see where one should have a short explanation of our rebar procedure. The rebar is not set monument-style but is more on the order of fence posts like the U.S. Forest Service uses to delineate property lines. Each rebar is left protruding 2-1/2 to 3 feet above the ground. Attached to the upper portion of the rebar is a yellow 4" x 8" sign marked "Property Line, International Paper Co., Gardiner, Oregon." Each sign is stamped with the traverse point number, the distance (to the nearest foot) and bearing (north, south, east or west) to the nearest corner, what corner that is (i.e., the nearest corner), and my Professional Land Surveyor's registration number. Each rebar is set ± 0.2 feet from true line.

Sincerely yours,



Donald L. Peel, PLS

Enclosures