

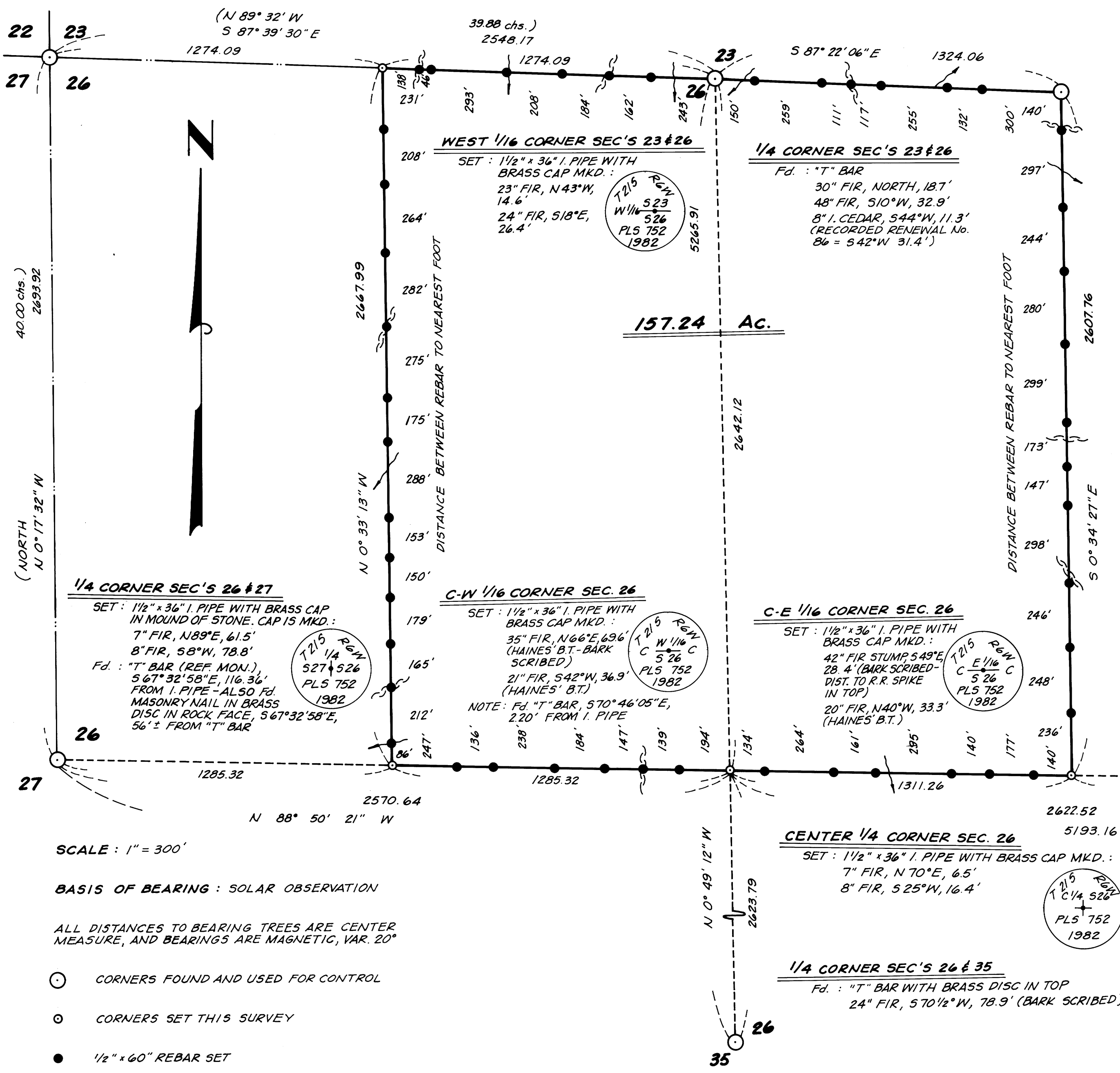
FILED *BS*
RECEIVED *BS*
JUL 30 1982
COUNTY SURVEYOR
DOUGLAS COUNTY, OREGON
BS

SECTION CORNER 22, 23, 26 & 27

Fd.: "T" BAR & STONE (8"x9"x36")
ALONGSIDE "T" BAR
12" CEDAR, N50 1/2°E, 12.0'
35" FIR, S47°E, 10.3'

EAST 1/16 CORNER SEC'S 23 & 26

Fd.: "T" BAR
8" FIR, S57°W, 18.1'
30" FIR, S29°W, 8.5' (BARK SCRIBED)



NARRATIVE:

THIS SURVEY WAS MADE IN JUNE AND JULY, 1982 BY DONALD L. PEEL OF PEEL BAKER LAND SURVEYING INC., 1262 LAWRENCE ST., EUGENE, OREGON. THE PURPOSE OF THIS SURVEY WAS TO LOCATE AND MARK THE BOUNDARY LINES OF THE PROPERTY OWNED BY INTERNATIONAL PAPER COMPANY IN THE NORTH HALF OF SECTION 26, T21S, R6W, W.M.. A KERN K15 THEODOLITE AND DM 502 E.D.M. WERE USED TO PERFORM THIS SURVEY. CLOSED RANDOM TRANSIT TRAVERSES, WITH A MINIMUM ERROR OF CLOSURE OF 1/60000, WERE RUN BETWEEN FOUND CORNERS FOR CONTROL. BEARINGS WERE BASED ON A SOLAR OBSERVATION. OFFSETS TO THE TRUE PROPERTY LINE WERE CALCULATED AND USED TO DETERMINE THE POSITION OF THE TRUE LINE. THE TRUE PROPERTY LINE WAS MARKED IN THE FIELD BY BLAZING TREES (BLAZES PAINTED RED) ON ONE SIDE OF THE TRUE LINE, AND BY 1/2" x 60" REBAR SET AT RANDOM INTERVALS APPROX. ON TRUE LINE. I RESET 1/4 CORNER 27 & 26 FROM WILFORD HAINES' REFERENCE POINTS (SEE C.S. FILE No. 51/222 OR DOUGLAS COUNTY RENEWED CORNER No. 112). THE WEST 1/16 CORNER 23 & 26 WAS SET AT MIDPOINT BETWEEN SECTION CORNER 22, 23, 26, & 27 AND 1/4 CORNER 23 & 26. THE CENTER 1/4 CORNER WAS SET AT THE POINT OF INTERSECTION OF THE NORTH-SOUTH CENTERLINE AND THE EAST-WEST CENTERLINE. THE C-E 1/16 CORNER WAS SET AT MIDPOINT BETWEEN THE EAST 1/4 CORNER AND THE CENTER 1/4 CORNER. THE C-W 1/16 CORNER WAS SET AT THE MIDPOINT BETWEEN THE WEST 1/4 CORNER AND THE CENTER 1/4 CORNER. ALL CORNERS SET IN THIS SURVEY WERE MONUMENTED WITH 1/2" x 36" IRON PIPES WITH BRASS CAPS.

C.S. 58/274(W)
MAP FILE 02.22-48

SCALE: 1" = 300'

BASIS OF BEARING: SOLAR OBSERVATION

ALL DISTANCES TO BEARING TREES ARE CENTER MEASURE, AND BEARINGS ARE MAGNETIC, VAR. 20'

- CORNERS FOUND AND USED FOR CONTROL
- CORNERS SET THIS SURVEY
- 1/2" x 60" REBAR SET
- PROPERTY LINE BLAZED AND POSTED WITH 1/2" x 60" REBAR
- () G.L.O. BEARING AND DISTANCE

REGISTERED PROFESSIONAL LAND SURVEYOR

Donald L. Peel

OREGON
JULY 9, 1980
DONALD L. PEEL
752

SURVEY IN
N1/2 SECTION 26, T21S, R6W, W.M.
DOUGLAS COUNTY, OREGON
FOR
INTERNATIONAL PAPER COMPANY
BY
PEEL BAKER LAND SURVEYING INC.
JULY 12, 1982

C.S. 58/274(W)
MAP FILE 02.22-48

M 92-48 ; M 92-49

PEEL BAKER LAND SURVEYING, INC.

1262 Lawrence Street, Suite 4
EUGENE, OREGON 97401
Telephone: (503) 343-7243

Home Telephones:
Don Peel, PLS 344-1828
Dan Baker 484-2734

July 28, 1982

FILED
RECEIVED *BS*

JUL 30 1982

Douglas County Surveyor
Room 205--Justice Building
Roseburg, OR 97470

COUNTY SURVEYOR
DOUGLAS COUNTY, ORE.

Attention: Mr. Larry E. Monrean

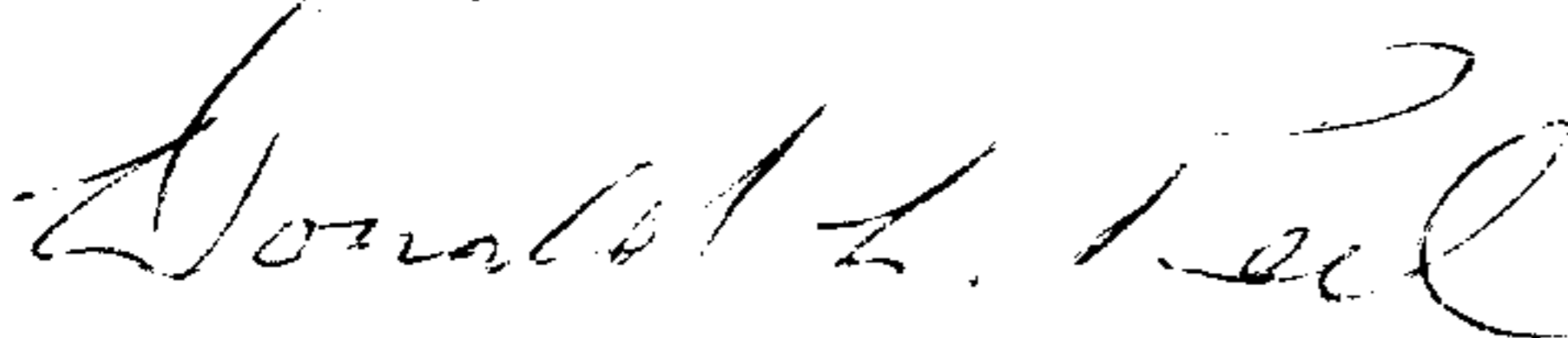
Dear Mr. Monrean:

Enclosed find two survey plats to be filed for record.

1. Section 26, T21S, R6W, W.M. I have made your suggested corrections.
2. Section 33, T19S, R10W, W.M., with a \$10.00 check to cover the filing fee.

Concerning the 1/2" x 60" rebar you mentioned, I can see where one should have a short explanation of our rebar procedure. The rebar is not set monument-style but is more on the order of fence posts like the U.S. Forest Service uses to delineate property lines. Each rebar is left protruding 2-1/2 to 3 feet above the ground. Attached to the upper portion of the rebar is a yellow 4" x 8" sign marked "Property Line, International Paper Co., Gardiner, Oregon." Each sign is stamped with the traverse point number, the distance (to the nearest foot) and bearing (north, south, east or west) to the nearest corner, what corner that is (i.e., the nearest corner), and my Professional Land Surveyor's registration number. Each rebar is set ± 0.2 feet from true line.

Sincerely yours,



Donald L. Peel, PLS

Enclosures