

RIGHT OF WAY SURVEY FOR
U.S. FOREST SERVICE
S.E. 1/4, S.E. 1/4, SEC. 7, T. 27S, R. 1W
WILLAMETTE MERIDIAN
LITTLE RIVER ROAD NO. 272

M. E. FARR
UMPQUA NATIONAL FOREST
704 S.E. CASS ST.
ROSEBURG, ORE. 97470
672-6601

SEE ACCOMPANYING NARRATIVE
FOR CORNER DESCRIPTIONS

REGISTERED
PROFESSIONAL
LAND SURVEYOR

Maurice E. Farr

OREGON
SEPT. 23, 1971
MAURICE E. FARR
1181

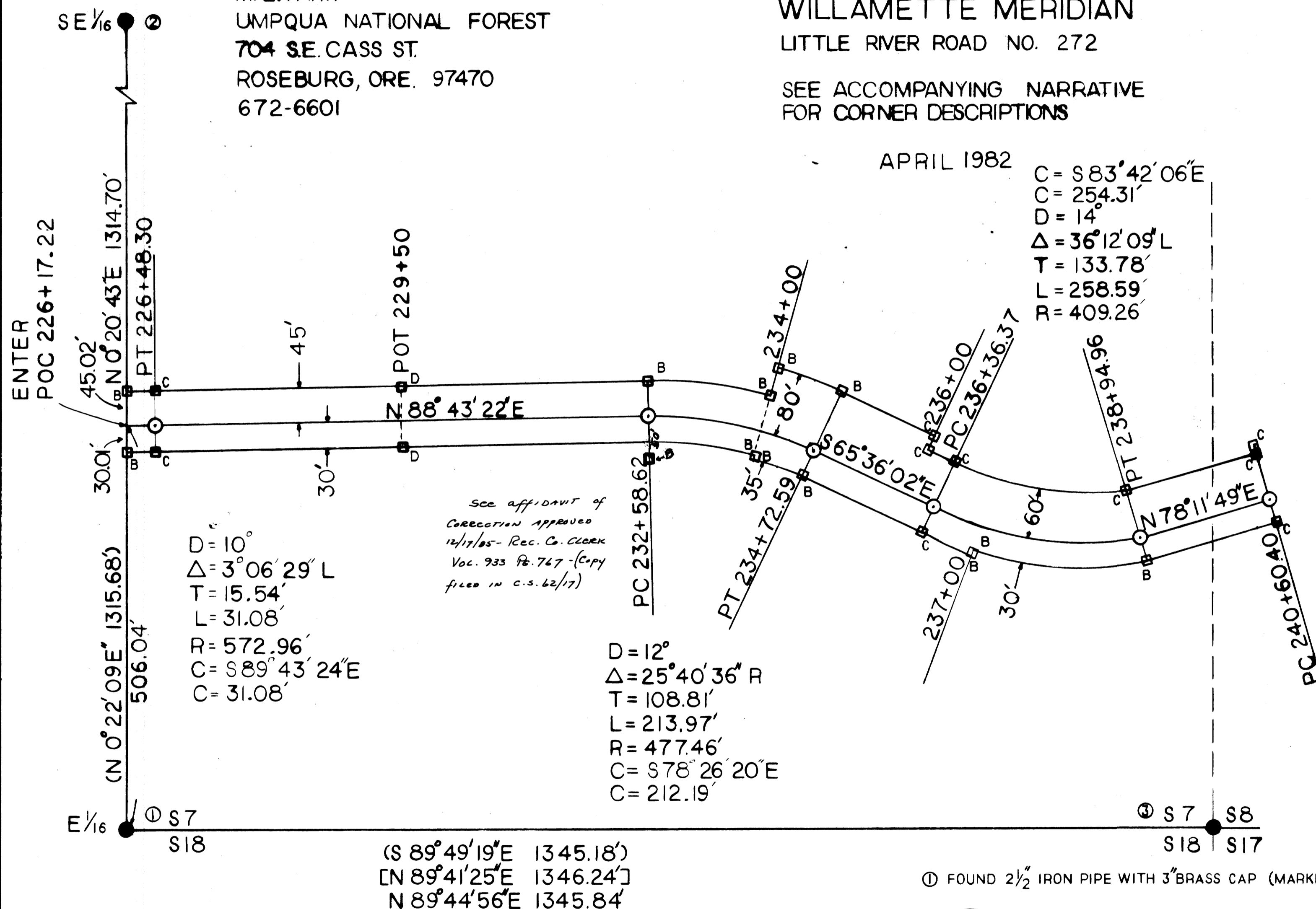
FILED *BS*
RECEIVED *RWS*

JUL 30 1982

COUNTY SURVEYOR
DOUGLAS COUNTY, ORE.
BS

APRIL 1982

C = S 83° 42' 06" E
C = 254.31'
D = 14'
Δ = 36° 12' 09" L
T = 133.78'
L = 258.59'
R = 409.26'



See affidavit of
Correction approved
12/17/85 - Rec. Co. Clerk
Vol. 933 Pg. 747 - (Copy
filed in C.S. 62/17)

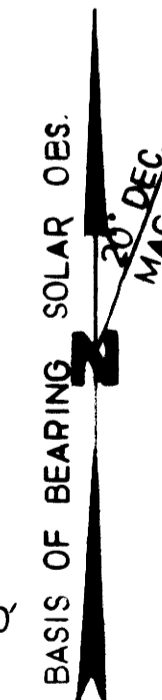
D = 10°
Δ = 3° 06' 29" L
T = 15.54'
L = 31.08'
R = 572.96'
C = S 89° 43' 24" E
C = 31.08'

D = 12°
Δ = 25° 40' 36" R
T = 108.81'
L = 213.97'
R = 477.46'
C = S 78° 26' 20" E
C = 212.19'

(S 89° 49' 19" E 1345.18')
[N 89° 41' 25" E 1346.24']
N 89° 44' 56" E 1345.84'

U.S. R/W
PC, PT, STATION
& DIST
RD. NO.

SCALE:
1" = 100 FT



LEGEND
LENGTH OF REBAR SET
A - 12" D - 30"
B - 18" E - 36"
C - 24"

① FOUND 2 1/2" IRON PIPE WITH 3" BRASS CAP (MARKED)

FROM WHICH BEARS
14" D. FIR S 4 1/2° W 60.6'
48" D. FIR S 6° E 63.0'

② DETAIL - PAGE 2
③ FOUND 2 1/2" IRON PIPE WITH BRASS CAP (MARKED)

FROM WHICH BEARS
24" D. FIR S 40° W 33.9'
20" D. FIR S 78° W 41.0'