

**SURVEY TO ESTABLISH PROP. CORS. FOR DEED DESCRIPTION
 SURVEYED FOR R.N. THOMAS
 SURVEYED BY AA SURVEYING SERVICE INC. P.O. BOX 130
 ROSEBURG, OR., 97470
 IN SEC. 29 T28S R6W WM, PT. OF THE N.E. 1/4
 SCALE 1"=100' JULY 1982**

COUNTY SURVEYORS FILE DATA
 DO NOT REMOVE FROM OFFICE

FILED *BS*
 RECEIVED *BS*

JUL 20 1982

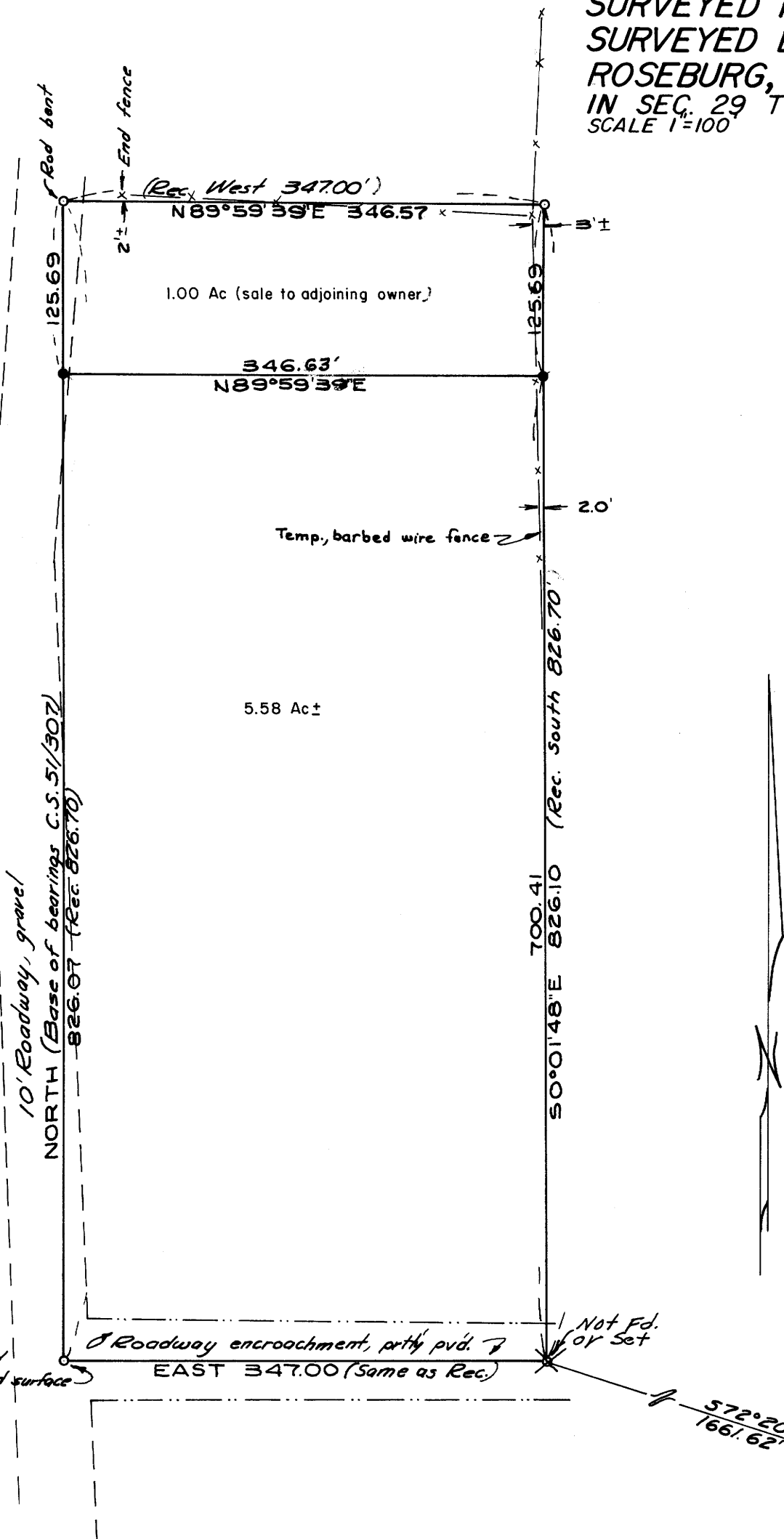
COUNTY SURVEYOR
 DOUGLAS COUNTY, ORE.

BS

- Fd 5/8" I.R. per CS file 51/307
- Set 5/8" 30" I.R. w/alm. cap mkd. AA Surveying
- ◎ 1/4 cor. S28 & 29 T28S R6W WM

NARRATIVE

PROJECT = CUT 1 ACRE PRCL. OFF NORTH END OF PROP
 CREW = J. ARTMAN, H. PIESKE
 EQPT. = LEITZ 6" THEODOLITE
 " " DM-SI EDM
 CONTROL = SURVEY BASED ON CS FILE 51/307, FD. ALL
 CORS., DIMENSIONS AS SHOWN. SET CORS.
 IN EAST & WEST LINES IN LINE W/FD. CORS.



MAP FILE 27-92-41

MAP FILE 27-92-41

REGISTERED
 PROFESSIONAL
 LAND SURVEYOR
Herman A. Pieske
 OREGON
 JULY 15, 1940
 HERMAN A. PIESKE
 1982