

COUNTY SURVEYORS FILE DATA  
DO NOT REMOVE FROM OFFICE

FILED *BS*  
RECEIVED *BS*  
MAY 14 1982  
COUNTY SURVEYOR  
DOUGLAS COUNTY, ORE.  
*BS*

# MAP

SHOWING A SURVEY IN SECTION 24, TOWNSHIP 28 SOUTH, RANGE 7 WEST, W.M., DOUGLAS COUNTY, OREGON

APRIL 23, 1982

SCALE: 1" = 400'

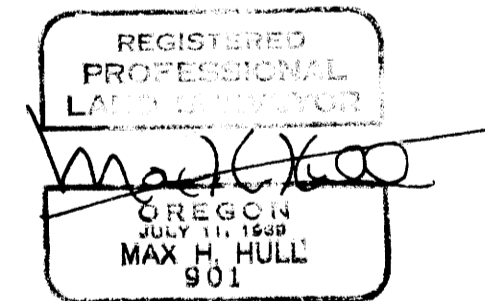
SURVEY NARRATIVE SEPARATE FROM MAP

SURVEYED FOR:

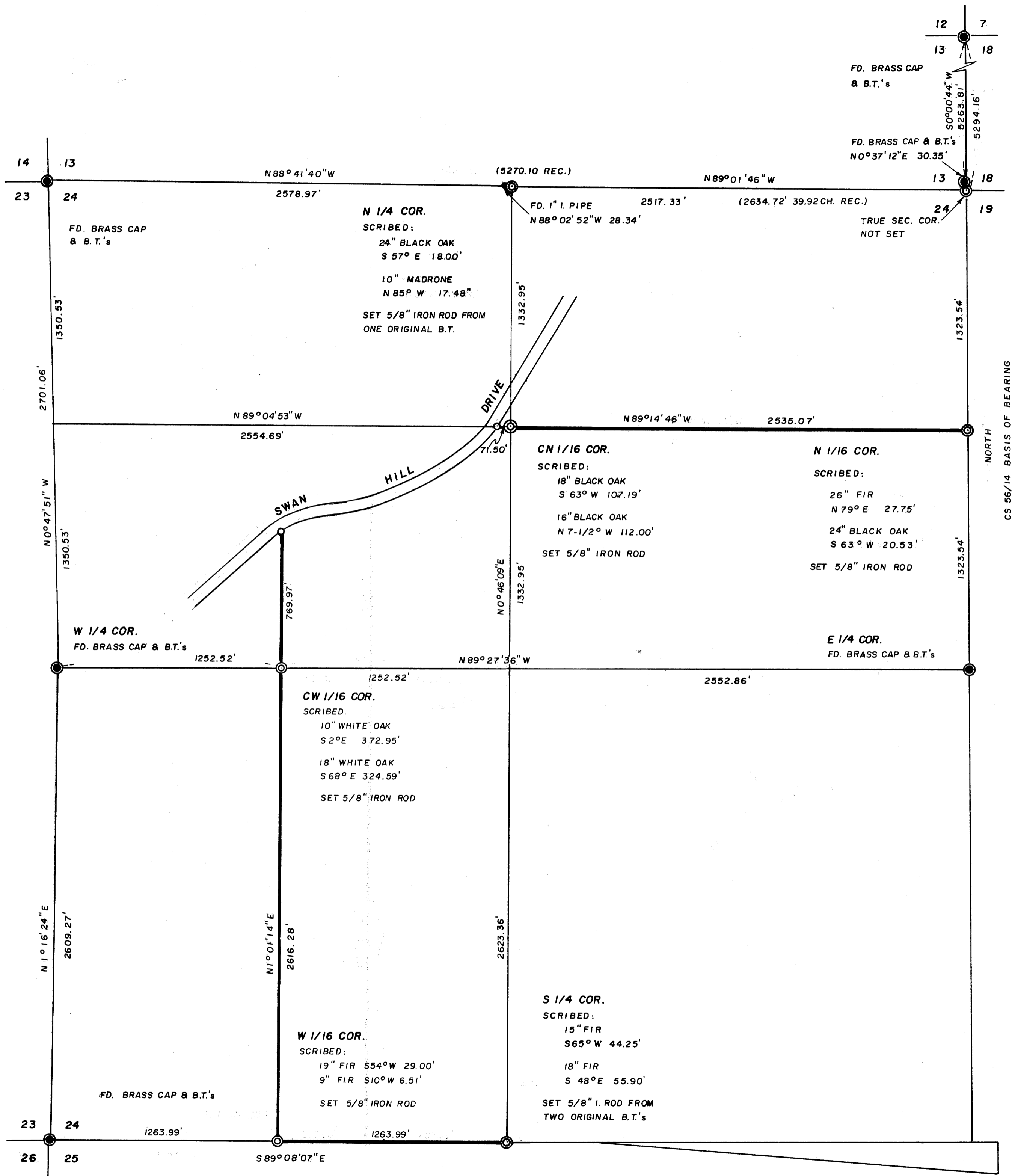
BOB GRIFFIS  
P.O. BOX 629  
CAVE JUNCTION, OREGON

SURVEYED BY:

MAX H. HULL, SURVEYING  
231 NW "B" STREET  
GRANTS PASS, OREGON



- ⊙ SET
  - ⦿ FD.
  - SET 5/8" X 30" IRON ROD WITH PLASTIC CAP MARKED RS 901
  - FD. IRON MONUMENT AS NOTED
- MERIDIAN BASED ON CS 56/14



C.S. File No. 58/172  
MAP FILE 27-98-4

C.S. File No. 58/172  
MAP FILE 27-98-4



**MAX H. HULL Land Surveying**

M 92-4

Office 476-2425

231 N. W. 'B' Street Grants Pass, Oregon 97526

FILED

SURVEY NARRATIVE to comply with Paragraph 209.250, O.R.S.

RECEIVED *AS*

FOR: Bob Griffis  
P.O. Box 629  
Cave Junction, Oregon

MAY 14 1982

DATE: April 26, 1982

COUNTY SURVEYOR  
DOUGLAS COUNTY, ORE.

PURPOSE: To survey a parcel of land located in Section 24, Township 28 South, Range 7 West, Willamette Meridian, Douglas County, Oregon.

PROCEDURE: Using a Wild T2-E theodolite and a Beetle 1000 E.D.M. I surveyed closed traverses to the following corners:

East 1/4 Corner - at which point I found a 1958 County Surveyor brass cap from which I found:

A Pine 18" diameter, North 72° East 1.7 feet  
A Laurel 12" diameter, South 30½° West 31.6 feet

North 1/4 Corner - at which point I set a 5/8" diameter iron rod from the only remaining bearing tree, a hollow 20" Black Oak stump with a scribe negative South 7° East 7.26 feet

Southwest Section Corner - at which point I found a 1968 County Surveyor brass cap from which I found:

A White Oak 18" diameter, South 41° East 27.5 feet  
A White Oak 21" diameter, North 80° East 122.8 feet  
A White Oak 8" diameter, North 18° West 12.2 feet  
A White Oak 15" diameter, North 56° East 23.6 feet

West 1/4 Corner - at which point I found a 1958 County Surveyor brass cap from which I found:

A 3'x6'x4' high rock, North 80° East 262.0 feet  
A White Oak 28" diameter, North 47° West 102.9 feet

Northwest Section Corner - at which point I found a 1958 County Surveyor brass cap from which I found:

A Cedar 16" diameter, North 60° West 82.0 feet  
A Fir 17" diameter, South 64° East 40.7 feet  
A White Oak 10" diameter, North 17½° East 53.1 feet  
A Black Oak 18" diameter, South 89° East 35.7 feet

South 1/4 Corner - at which point I set a 5/8" iron rod from original bearing trees:

C. S. File No. 58/179-5A

M 92 - 4

Office 476-2425



**MAX H. HULL Land Surveying**

231 N.W. 'B' Street Grants Pass, Oregon 97526

FILED

RECEIVED *BS*

MAY 14 1982

COUNTY SURVEYOR  
DOUGLAS COUNTY, ORE.

Page 2  
Griffis - Sec. 24, 28-7  
April 26, 1982

A Black Oak 28" diameter, down and dead with the face chopped out, no scribing visible, South 7° East 15.18 feet  
The remains of a large Black Oak stump, North 81° East 23.72 feet record

Northeast Section Corner - found 1973 County Surveyor brass cap North 0°37'12" East 30.35 feet from proportioned distance location

Northeast Corner of Section 12 - at which point I found a 1958 County Surveyor brass cap and bearing trees.

Thence I computed the subdivision of the section, set corners and surveyed boundary lines as shown on the map.

Meridian is based on Survey No. 56/14 using the East 1/4 corner of Section 24 and the Northeast corner of Section 13.

REGISTERED  
PROFESSIONAL  
LAND SURVEYOR

*Max H. Hull*  
OREGON  
JULY 11, 1969  
MAX H. HULL  
901