

LOCATION OF 1/2" IRON RODS

W. 1/4 COR.		S. 1/4 COR.		
W6-1	202'	S6-19	72'	EAST
W6-2	389'	S6-20	229'	EAST
W6-3	579'	S6-21	378'	EAST
W6-4	854'	S6-22	540'	EAST
W6-5	1034'	S6-23	759'	EAST
S. 1/16 COR.	1256'	S6-24	1018'	EAST
W6-7	1421'	S6-25	1192'	EAST
W6-8	1619'	E. 1/16 COR.	1280'	EAST
W6-9	1820'	S6-27	1547'	EAST
W6-11	2044'	S6-28	1818'	EAST
W6-12	2196'	S6-30	1988'	EAST
W6-13	2411'	S6-32	2279'	EAST
S.W. COR.	2512'	S.E. COR.	2560'	EAST
S6-2	128'	E6-1	86'	NORTH
S6-4	340'	E6-2	382'	NORTH
S6-5	606'	E6-3	605'	NORTH
S6-6	693'	E6-5	802'	NORTH
S6-7	841'	E6-6	1018'	NORTH
W. 1/16 COR.	947'	E6-7	1226'	NORTH
S6-9	1021'	S. 1/16 COR.	1292'	NORTH
S6-11	1165'	E6-8	1455'	NORTH
S6-12	1344'	E6-9	1633'	NORTH
S6-13	1590'	E6-10	1882'	NORTH
S6-15	1688'	E6-11	2030'	NORTH
S6-16	1904'	E6-12	2232'	NORTH
S6-17	2059'	E6-13	2432'	NORTH
S. 1/4 COR.	2227'	E. 1/4 COR.	2584'	NORTH

"A" SOUTH 1/16 CORNER  
SET 1 1/2" x 36" IRON PIPE & BRASS CAP  
9" FIR, N 11° W, 14.3' (SCRIBED)  
10" FIR, S 88° E, 24.7' (SCRIBED)

"B" WEST 1/16 CORNER  
SET 2 1/2" BRASS CAP IN ROCK FACE  
10" FIR, N 35° W, 13.7' (SCRIBED)  
12" FIR, S 49° W, 36.8' (SCRIBED)

"C" EAST 1/16 CORNER  
SET 1 1/2" x 36" IRON PIPE & BRASS CAP  
5" HEMLOCK, N 12° E, 11.1' (SCRIBED)  
62" FIR, N 21° W, 40.3' (SCRIBED)

"D" SOUTH 1/16 CORNER  
SET 1 1/2" x 36" IRON PIPE & BRASS CAP  
39" HEMLOCK, N 36° E, 36.6' (SCRIBED)  
58" FIR, N 26° W, 61.5' (SCRIBED)

SURVEY OF  
SECTION 6, T 21 S, R 7 W, W.M.  
DOUGLAS COUNTY, OREGON  
FOR  
INTERNATIONAL PAPER COMPANY

BY  
ROBERTS SURVEYING INC.  
29 WEST 29TH STREET  
EUGENE, OREGON 97405  
JUNE 15, 1982

WEST 1/4 CORNER

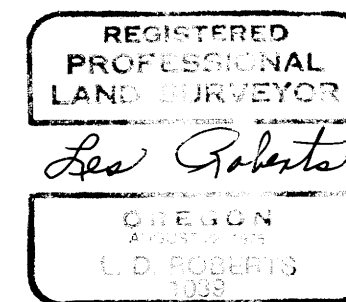
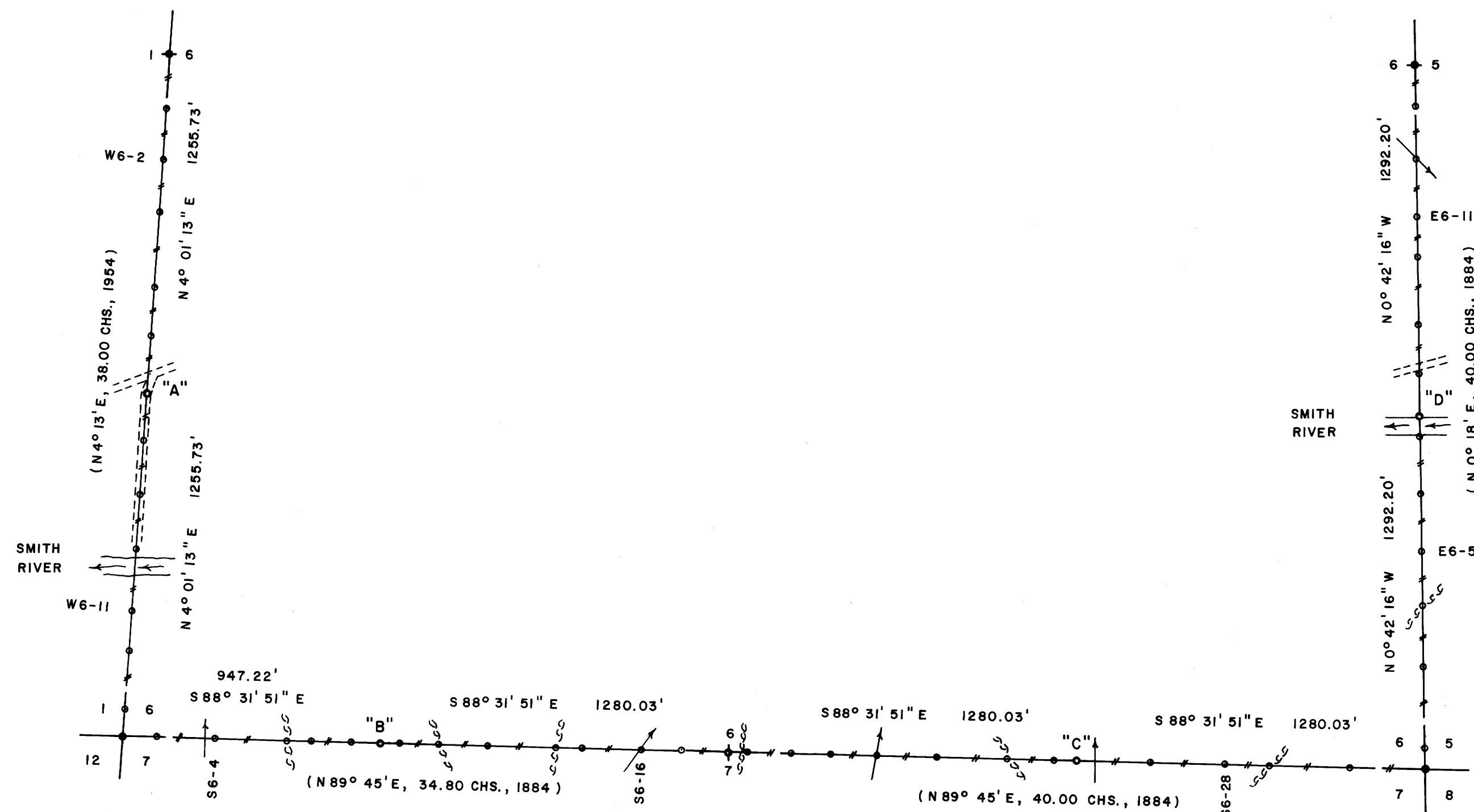
FD. 1954 G.L.O. BRASS CAP  
24" FIR STUMP, S 55° W, 27.0' (NO MARKS), 1884 B.T.  
28" FIR, S 26° W, 31.5' (SCAR VIS.), 1954 B.T.  
30" FIR STUB, N 77° E, 24.8' (SCRIBE VIS.), 1954 B.T.  
39" FIR, N 6 1/2° E, 52.9' (SCAR VIS.), NO RECORD

EAST 1/4 CORNER

FD. 1962 DOUGLAS COUNTY BRASS CAP  
17" HEMLOCK, S 30° W, 83.7' (SCAR VIS.), 1962 C.S.B.T.  
18" HEMLOCK, S 69° W, 53.7' (SCAR VIS.), 1962 C.S.B.T.  
SET 12" FIR, S 73° E, 21.3' (SCRIBED)

LEGEND

- CORNERS FOUND AND USED FOR CONTROL
- CORNERS SET, 1 1/2" x 36" IRON PIPES WITH BRASS CAPS. CAPS STAMPED S-T-R, DATE AND P.L.S. NO. 1039.
- LINES MARKED WITH RED PAINTED BLAZES, 1/2" x 60" IRON RODS AND RED RIBBON. A YELLOW PROPERTY LINE SIGN, WITH P.L.S. NO. 1039 STAMPED UPON, IS ATTACHED TO EACH ROD.
- ( ) DATA OF RECORD, 1884 AND 1954
- BASIS OF BEARING, SOLAR OBSERVATION
- DISTANCE TO BEARING TREES ARE CENTER MEASURE
- ALL BEARING TREES ARE SCRIBED
- SCALE 1" = 400'



NARRATIVE

I, LES ROBERTS, REGISTERED PROFESSIONAL LAND SURVEYOR DO CERTIFY THAT I HAVE CORRECTLY SURVEYED SECTION 6 IN ACCORDANCE TO THE MANUAL OF INSTRUCTIONS FOR THE SURVEY OF THE PUBLIC LANDS OF THE UNITED STATES. THE SOUTH 1/4 CORNER OF SECTION 6 WAS SET BY SINGLE PROPORTIONATE MEASURE USING THE 1884 PLATTED DISTANCE AS A BASE FOR PROPORTIONING. THE SOUTH 1/16 CORNER BETWEEN SECTIONS 5 AND 6 WAS SET HALFWAY BETWEEN THE EAST 1/4 CORNER AND THE S.E. CORNER OF SECTION 6. THE EAST 1/16 CORNER BETWEEN SECTIONS 6 AND 7 WAS SET HALFWAY BETWEEN THE SOUTH 1/4 CORNER AND THE S.E. CORNER OF SECTION 6. THE WEST 1/16 CORNER BETWEEN SECTIONS 6 AND 7 WAS SET AT PROPORTIONATE DISTANCE BETWEEN THE SOUTH 1/4 CORNER AND THE S.W. CORNER OF SECTION 6 AS SHOWN. THE SOUTH 1/16 CORNER BETWEEN SECTIONS 1 AND 6 WAS SET HALFWAY BETWEEN THE WEST 1/4 CORNER AND THE S.W. CORNER OF SECTION 6. A CLOSED MEANDER TRANSIT AND E.D.M. TRAVERSE WAS RUN BETWEEN ALL FOUND CORNERS AND USED FOR CONTROL. A CLOSED MEANDER TRANSIT AND CHAIN TRAVERSE WAS RUN ALONG THE WEST, SOUTH AND EAST BOUNDARIES OF SECTION 6 AS SHOWN. OFFSETS WERE COMPUTED FROM THIS MEANDER TRAVERSE TO THE TRUE PROPERTY LINE.

S.W. SECTION CORNER

FD. 1954 G.L.O. BRASS CAP  
28" FIR, N 57° W, 45.1' (SCAR VIS.), 1954 B.T.  
26" FIR, N 11° E, 7.4' (SCAR VIS.), 1954 B.T.  
30" FIR (DOWNED), S 1° E, 22.4' (SCAR VIS.), 1954 B.T.  
20" FIR (DOWNED), S 5° W, 7.3' (SCAR VIS.), 1954 B.T.

SOUTH 1/4 CORNER

NO EVIDENCE FOUND OF ORIGINAL CORNER  
SET 1 1/2" x 36" IRON PIPE & BRASS CAP  
18" HEMLOCK, S 86° E, 22.0' (SCRIBED)  
21" HEMLOCK, N 7° W, 24.4' (SCRIBED)

S.E. SECTION CORNER

FD. 1965 B.L.M. BRASS CAP  
36" HEMLOCK, N 61° E, 24.6' (NO MARKS), 1884 B.T.  
58" FIR, N 14° W, 14.0' (NO MARKS), 1884 B.T.  
13" HEMLOCK, N 31° E, 45.8' (SCAR VIS.), 1965 B.T.  
15" HEMLOCK, S 13° E, 16.7' (SCAR VIS.), 1965 B.T.  
15" HEMLOCK, S 28° W, 22.5' (SCAR VIS.), 1965 B.T.  
30" HEMLOCK, N 61° W, 42.2' (SCAR VIS.), 1965 B.T.

MAP FILE M 22-37

MAP FILE M 22-37