

LOCATION OF 1/2" IRON RODS

S.E. SEC. COR.		C. E. 1/16 COR.			
E 26-1	209'	NORTH	1-26-19	226'	WEST
E 26-3	452'	NORTH	1-26-22	432'	WEST
E 26-4	671'	NORTH	1-26-23	555'	WEST
E 26-5	940'	NORTH	1-26-24	806'	WEST
E 26-6	1102'	NORTH	1-26-25	935'	WEST
S 1/16 COR.	1311'	NORTH	1-26-27	1144'	WEST
E 26-10	1484'	NORTH	C. 1/4 COR.	1319'	WEST
E 26-11	1716'	NORTH	1-26-30	178'	SOUTH
E 26-13	1991'	NORTH	1-26-31	362'	SOUTH
E 26-14	2255'	NORTH	1-26-32	553'	SOUTH
E 26-15	2462'	NORTH	1-26-33	783'	SOUTH
E 1/4 COR.	2622'	NORTH	1-26-34	992'	SOUTH
E 26-16	236'	NORTH	1-26-35	1101'	SOUTH
E 26-17	402'	NORTH	C.S. 1/16 COR.	1323'	SOUTH
E 26-19	573'	NORTH	1-26-37	278'	EAST
E 26-21	808'	NORTH	1-26-38	497'	EAST
E 26-22	946'	NORTH	1-26-40	736'	EAST
E 26-23	1159'	NORTH	1-26-41	984'	EAST
N 1/16 COR.	1310'	NORTH	1-26-42	1164'	EAST
1-26-1	167'	WEST	S.E. 1/16 COR.	1320'	EAST
1-26-2	256'	WEST	1-26-45	206'	SOUTH
1-26-3	508'	WEST	1-26-47	454'	SOUTH
1-26-4	598'	WEST	1-26-48	703'	SOUTH
1-26-5	890'	WEST	1-26-50	834'	SOUTH
1-26-7	1118'	WEST	1-26-52	1059'	SOUTH
N.E. 1/16 COR.	1321'	WEST	1-26-53	1181'	SOUTH
1-26-9	156'	SOUTH	E. 1/16 COR.	1317'	SOUTH
1-26-11	342'	SOUTH	S 26-1	287'	EAST
1-26-12	570'	SOUTH	S 26-2	478'	EAST
1-26-13	858'	SOUTH	S 26-3	651'	EAST
1-26-15	1070'	SOUTH	S 26-5	835'	EAST
C.E. 1/16 COR.	1313'	SOUTH	S 26-6	1009'	EAST
			S 26-7	1153'	EAST
			S.E. COR.	1321'	EAST

WEST 1/4 CORNER

FD. 1966 DOUGLAS COUNTY BRASS CAP
 38" FIR, S 60° W, 21.0' (SCAR VIS.), 1893 B.T.
 50" DOWNED FIR, N 24° E, 40.0' (SCAR VIS.), 1893 B.T.
 21" FIR, N 23° E, 61.2' (SCAR VIS.), 1966 C.S.B.T.
 23" W. FIR, S 37° W, 18.1' (SCAR VIS.), 1966 C.S.B.T.

"A" SOUTH 1/16 CORNER

SET 1 1/2" x 36" IRON PIPE & BRASS CAP
 10" FIR, S 5° W, 24.4' (SCRIBED)
 14" FIR, S 68° E, 44.7' (SCRIBED)

"B" NORTH 1/16 CORNER

SET 1 1/2" x 36" IRON PIPE & BRASS CAP
 7" FIR, S 34° W, 36.6' (SCRIBED)
 37" CEDAR, S 76° E, 12.8' (SCRIBED)

"C" N.E. 1/16 CORNER

SET 1 1/2" x 36" IRON PIPE & BRASS CAP
 10" ALDER, N 42° W, 30.2' (SCRIBED)
 26" FIR, N 25° E, 74.0' (SCRIBED)

"D" C.E. 1/16 CORNER

SET 1 1/2" x 36" IRON PIPE & BRASS CAP
 13" W. FIR, N 2° E, 35.6' (SCRIBED)
 34" CEDAR, S 24° E, 41.3' (SCRIBED)

"E" CENTER 1/4 CORNER

SET 1 1/2" x 36" IRON PIPE & BRASS CAP
 12" FIR, S 59° E, 25.5' (SCRIBED)
 15" FIR, N 44° E, 20.7' (SCRIBED)

"F" C.S. 1/16 CORNER

SET 1 1/2" x 36" IRON PIPE & BRASS CAP
 12" FIR, N 77° E, 17.5' (SCRIBED)
 12" FIR, N 30° W, 27.9' (SCRIBED)

"G" S.E. 1/16 CORNER

SET 1 1/2" x 36" IRON PIPE & BRASS CAP
 14" FIR, N 57° W, 44.7' (SCRIBED)
 15" FIR, N 56° E, 10.6' (SCRIBED)

"H" EAST 1/16 CORNER

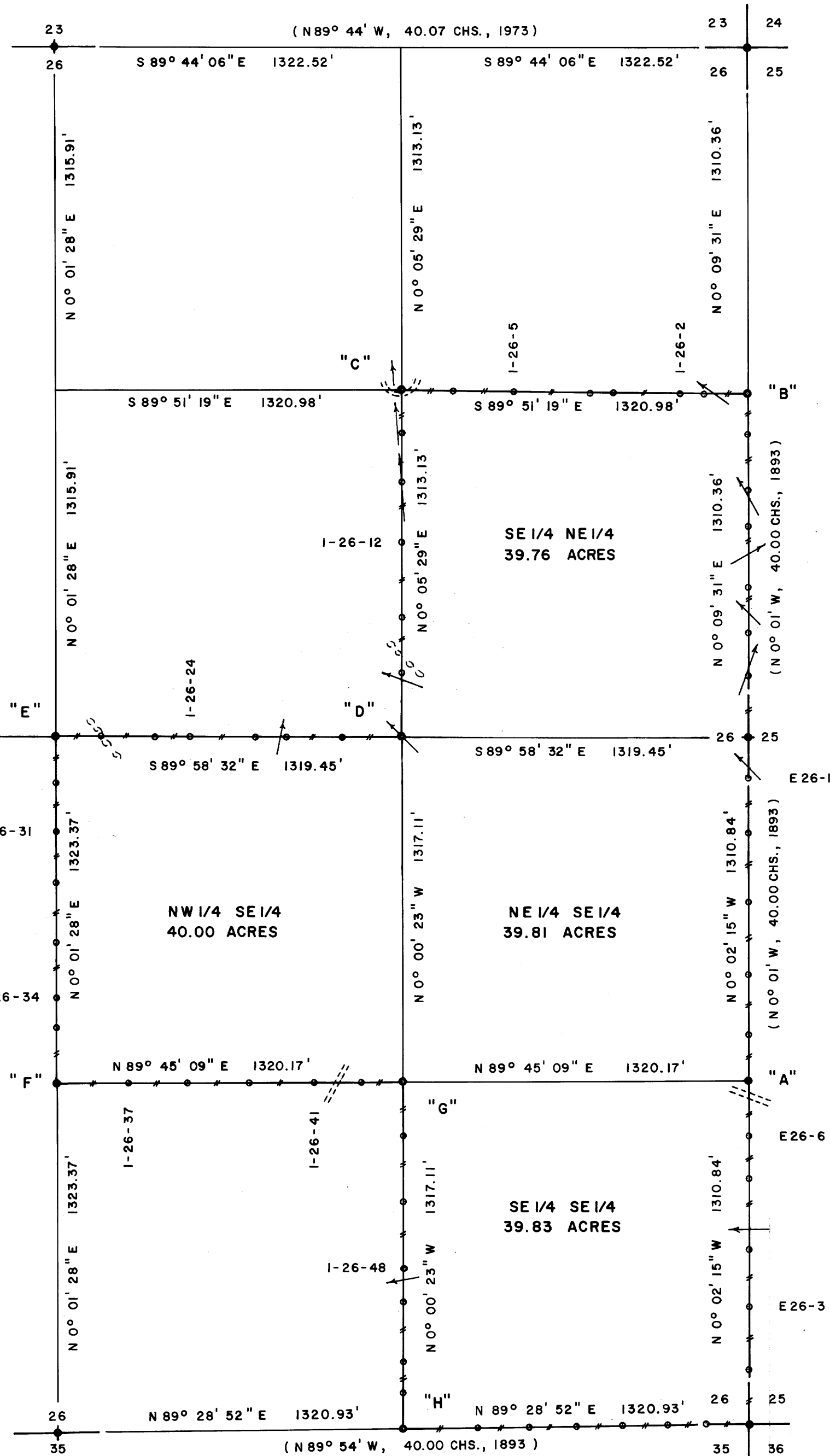
SET 1 1/2" x 36" IRON PIPE & BRASS CAP
 17" FIR, N 60° W, 39.9' (SCRIBED)
 17" FIR, N 67° E, 29.5' (SCRIBED)

NORTH 1/4 CORNER

FD. 1973 B.L.M. BRASS CAP AND
 10" x 12" x 14" STONE (NO MARKS)
 32" FIR, S 56° E, 10.7' (SCAR VIS.), 1893 B.T.
 44" FIR, N 18° W, 6.5' (SCAR VIS.), 1893 B.T.

N.E. SECTION CORNER

FD. 1958 DOUGLAS COUNTY BRASS CAP
 30" WINDFALL, N 4° E, 29.9' (SCAR VIS.), 1893 B.T.
 33" CEDAR, S 79° W, 63.7' (SCAR VIS.), 1893 B.T.
 43" CEDAR, S 61° E, 56.5' (SCAR VIS.), 1893 B.T.
 9" FIR, N 19° W, 4.2' (SCAR VIS.), 1958 C.S.B.T.
 19" FIR, S 40° W, 9.7' (SCAR VIS.), 1958 C.S.B.T.
 11" FIR, N 30° E, 17.4' (SCAR VIS.), 1973 B.T.



SOUTH 1/4 CORNER

FD. 36" CEDAR, N 55° W, 5.9' (SCAR VIS.), 1893 B.T.
 60" FIR, S 74° E, 27.7' (BARK SCRIBED), 1893 B.T.
 SET 1 1/2" x 36" IRON PIPE & BRASS CAP
 12" W. FIR, N 77° E, 5.9' (SCRIBED)
 14" W. FIR, S 25° W, 10.8' (SCRIBED)

S.E. SECTION CORNER

FD. 1958 DOUGLAS COUNTY BRASS CAP
 18" FIR STUMP, N 54° E, 42.4' (NO MARKS), 1893 B.T.
 24" FIR SNAG, S 48° W, 40.4' (SCRIBED VIS.), 1893 B.T.
 32" FIR SNAG, N 60° W, 22.9' (SCRIBED VIS.), 1893 B.T.
 ALL 1958 C.S.B.T.'S WERE DESTROYED BY LOGGING

SURVEY OF
 SECTION 26, T 24S, R 7W, W.M.
 DOUGLAS COUNTY, OREGON
 FOR
 INTERNATIONAL PAPER COMPANY
 BY
 ROBERTS SURVEYING INC.
 29 WEST 29TH STREET
 EUGENE, OREGON 97405

MAY 10, 1982

COUNTY SURVEYORS FILE DATA
 DO NOT REMOVE FROM OFFICE

LEGEND

- CORNERS FOUND AND USED FOR CONTROL
- CORNERS SET, 1 1/2" x 36" IRON PIPES WITH BRASS CAPS STAMPED S-T-R, DATE AND P.L.S. NO 1039
- LINE MARKED WITH RED PAINTED BLAZES, 1/2" x 60" IRON RODS AND RED RIBBON. A YELLOW PROPERTY LINE SIGN, WITH P.L.S. NO. 1039 STAMPED UPON, IS ATTACHED TO EACH ROD
- () DATA OF RECORD, 1893 AND 1973
- BASIS OF BEARING, E 1/2 OF NORTH LINE FROM B.L.M. 1973 SURVEY (BEARING ROTATED 0° 00' 06" LT. DURING COMPUTATIONS)
- DISTANCE TO BEARING TREES ARE CENTER MEASURE
- ALL BEARING TREES ARE SCRIBED
- SCALE 1" = 400'

EAST 1/4 CORNER

FD. 1958 DOUGLAS COUNTY BRASS CAP
 27" CEDAR, S 88° W, 5.1' (SCAR VIS.), 1893 B.T.
 40" FIR, N 57° E, 21.0' (SCAR VIS.), 1893 B.T.
 24" CEDAR, N 66° E, 14.9' (SCAR VIS.), 1958 C.S.B.T.

REGISTERED
 PROFESSIONAL
 LAND SURVEYOR
Les Roberts
 L. D. ROBERTS
 1039

NARRATIVE

I, LES ROBERTS, REGISTERED PROFESSIONAL LAND SURVEYOR DO CERTIFY THAT I HAVE CORRECTLY SURVEYED SECTION 26 IN ACCORDANCE TO THE MANUAL OF INSTRUCTIONS FOR THE SURVEY OF THE PUBLIC LANDS OF THE UNITED STATES. THE CENTER 1/4 CORNER WAS SET AT THE INTERSECTION OF THE N-S AND E-W CENTER LINES OF SECTION 26. THE N.E. 1/16 AND THE S.E. 1/16 CORNERS WERE SET AT THE INTERSECTION OF THE N-S AND E-W CENTER LINES OF THE N.E. 1/4 AND THE S.E. 1/4 OF SECTION 26 RESPECTIVELY. THE C.S. 1/16 AND THE SOUTH 1/4 CORNER AND THE EAST 1/4 CORNER OF SECTION 26 RESPECTIVELY. THE EAST 1/16 CORNER BETWEEN SECTIONS 26 AND 35 WAS SET HALF-WAY BETWEEN THE SOUTH 1/4 CORNER AND THE S.E. CORNER OF SECTION 26. THE SOUTH 1/16 CORNER BETWEEN SECTIONS 25 AND 26 WAS SET HALF-WAY BETWEEN THE EAST 1/4 CORNER AND THE S.E. CORNER OF SECTION 26. THE NORTH 1/16 CORNER BETWEEN SECTIONS 25 AND 26 WAS SET HALF-WAY BETWEEN THE EAST 1/4 CORNER AND THE N.E. CORNER OF SECTION 26. A CLOSED MEANDER TRANSIT AND E.D.M. TRAVERSE WAS RUN BETWEEN ALL FOUND CORNERS AND USED FOR CONTROL. A CLOSED MEANDER TRANSIT AND CHAIN TRAVERSE WAS RUN ALONG THE EAST BOUNDARY AND THRU THE INTERIOR OF SECTION 26 AS SHOWN. OFFSETS WERE COMPUTED FROM THIS MEANDER TRAVERSE TO THE TRUE PROPERTY LINE.

FILED
 RECEIVED
 JUL 19 1982
 COUNTY SURVEYOR
 DOUGLAS COUNTY, ORE.

MAP FILE M 92-36

MAP FILE M 92-36