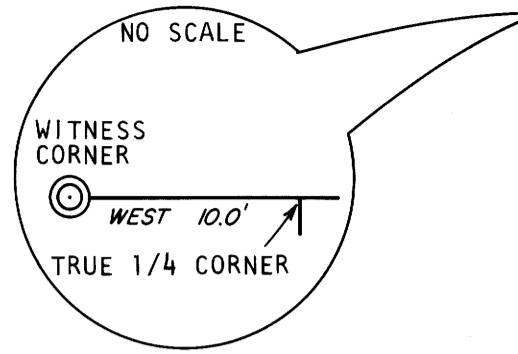


FILED *BS*  
 RECEIVED *BS*  
 JUL 14 1982  
 COUNTY SURVEYOR  
 DOUGLAS COUNTY, ORE.  
*BS*



- ### LEGEND
- ⊙ = MONUMENTS SET
  - ⊕ = MONUMENTS FOUND
  - OSBF P/C = OREGON STATE BOARD OF FORESTRY  
 1 1/2" x 36" GALVANIZED IRON  
 PIPE WITH 3" BRONZE CAP
  - USC P/C = UNITED STATES CADASTRAL 2 1/2" IRON  
 PIPE WITH 3" BRASS CAP
  - D.CO.P/C = DOUGLAS COUNTY 1" IRON PIPE WITH  
 2 1/2" BRASS CAP
  - WPCP = 4"x4"x72" WHITE PAINTED CEDAR POST
  - YMLP = YELLOW METAL LOCATION POSTER
  - ⊕<sub>BP</sub> = TRUE BLAZED AND POSTED
  - #1 [ ] = RECORD BEARINGS AND DISTANCES (OSCAR  
 THIEL, 1901, CONTRACT NO. 729)
  - #2 ( ) = RECORDS BEARINGS AND DISTANCES (UNITED  
 STATES CADASTRAL, 1965)
  - ESTABLISHED = NEW CORNER SET

### BASIS OF BEARING

SOLAR OBSERVATION

### PURPOSE

TO SEPARATE STATE FOREST LANDS AND PRIVATE LANDS  
 LOCATED IN SECTION 36, TOWNSHIP 32 SOUTH, RANGE  
 5 WEST, WILLAMETTE MERIDIAN.

### PROCEDURE

A RANDOM TRAVERSE WITH A CLOSING ERROR OF 1 TO  
 22,000 WAS USED TO CONNECT THE CONTROLLING  
 CORNERS GOVERNING THE SUBDIVISION OF SECTION 36,  
 TOWNSHIP 32 SOUTH, RANGE 5 WEST, WILLAMETTE  
 MERIDIAN. THIS SECTION WAS SUBDIVIDED USING THE  
 PROCEDURES AS OUTLINED IN THE "MANUAL OF  
 INSTRUCTIONS FOR THE SURVEY OF THE PUBLIC LANDS  
 OF THE U.S." BEARINGS WERE ROTATED TO  
 CORRESPOND TO THE OREGON STATE BOARD OF FORESTRY  
 1972 SURVEY OF SECTION 36. BEARINGS TO  
 ACCESSORIES FOR ESTABLISHED CORNERS WERE TAKEN  
 WITH A STAFF COMPASS SET AT 20°30' EAST MAGNETIC  
 DECLINATION. NEW CORNERS AND ACCESSORIES MARKED  
 ACCORDING TO "MANUAL OF INSTRUCTIONS FOR THE  
 SURVEY OF THE PUBLIC LANDS OF THE U.S." DISTANCE  
 MEASURED TO BT FACE. FOR DETAILED REPORT ON FOUND  
 CORNERS SEE COUNTY RECORDS. THE POSITION OF THE  
 SOUTH ONE QUARTER CORNER FOR SECTION 36 WAS BASED  
 ON THE OSCAR THIEL 1901 SURVEY (CONTRACT 729).  
 THE CLOSING CORNER FOR SECTIONS 35 AND 36 AND THE  
 TOWNSHIP CORNER OF SECTIONS 36 AND 1 WERE USED  
 FOR CONTROL.

SURVEY FOR:  
 STATE OF OREGON - DEPARTMENT OF FORESTRY  
**SECTION 36, T.32S., R.5W., W.M.**

DOUGLAS COUNTY, OREGON  
 THEODOLITE AND EDM SURVEY BY: D. SMITH,  
 J. MCINTOSH, A. KOREIVA AND T. VANVLEET  
 DRAWN BY: J. MCINTOSH  
 MAY 14, 1982  
 SCALE: 1" = 500'  
 SURVEYED BY:

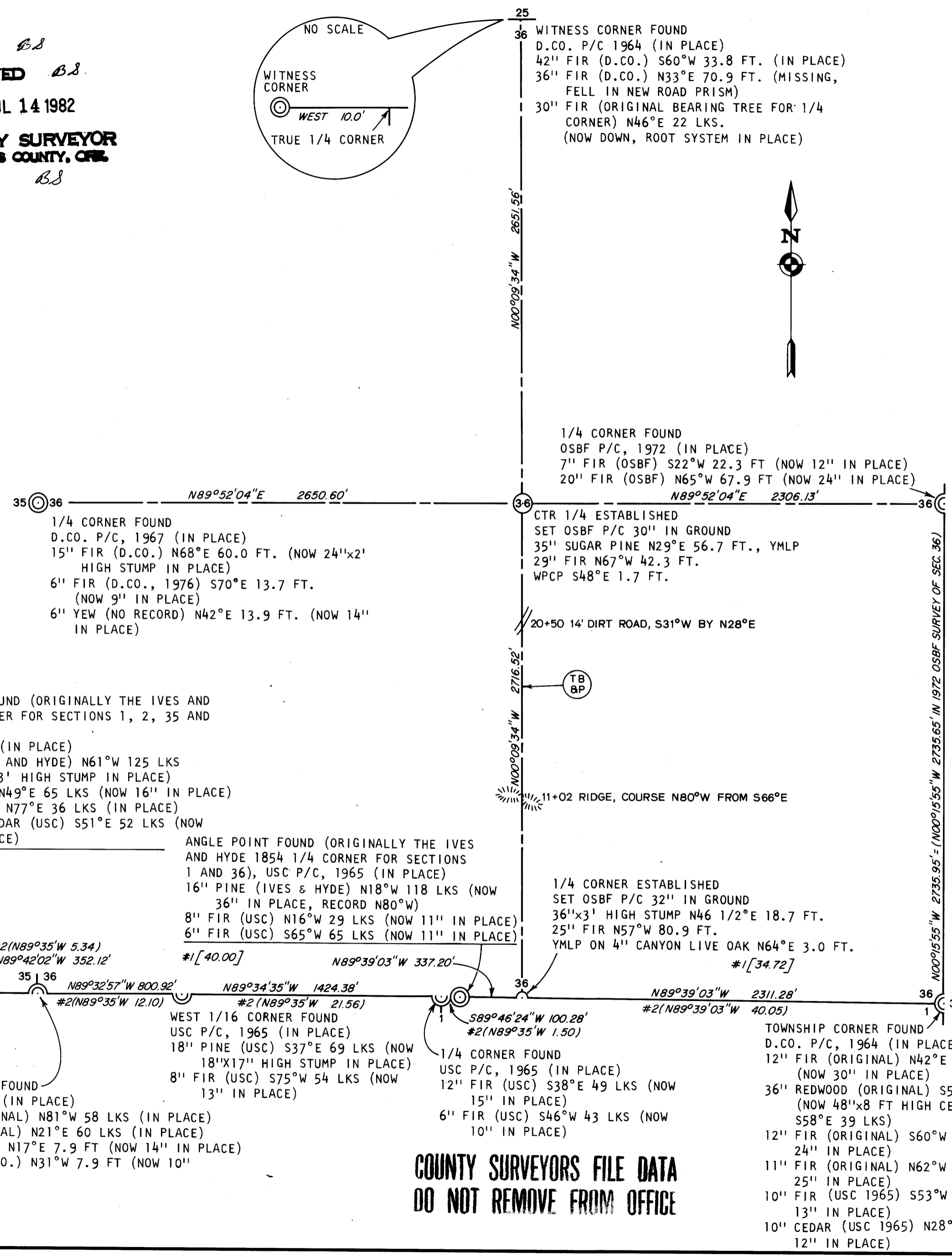
**REGISTERED  
 PROFESSIONAL  
 LAND SURVEYOR**

*Lloyd D. Smith*

**OREGON  
 JULY 22, 1977  
 LLOYD D. SMITH  
 1101**

LLOYD D. SMITH  
 300 5TH STREET/BAY PARK  
 COOS BAY, OREGON

**COUNTY SURVEYORS FILE DATA  
 DO NOT REMOVE FROM OFFICE**



MAP FILE. M. 92-34  
 B-236

MAP FILE. M. 92-34