

COUNTY SURVEYORS FILE DATA
DO NOT REMOVE FROM OFFICE

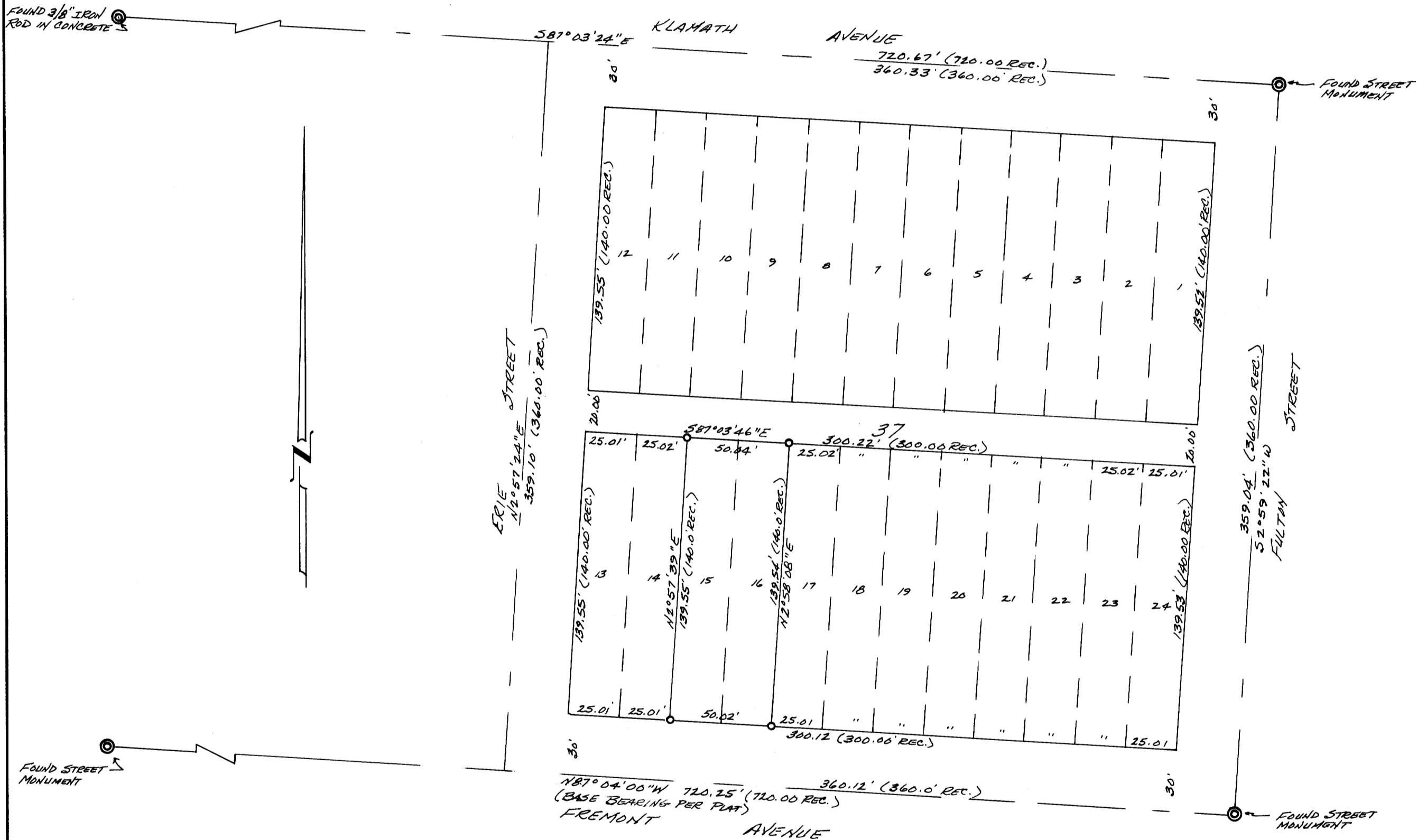
SURVEY IN LOTS 15 & 16, BLOCK 37, KINNEYS IMPROVED PLAT,
in the Southeast 1/4 Sect. 18, Twp. 27 S., Rng. 5 W., W.M.
Surveyed for Steve Siegel by Landline Development Co.
October, 1981 Scale 1" = 50'

- Set 5/8" x 30" Iron Rods

FILED
RECEIVED

JUL 8 1982

COUNTY SURVEYOR
DOUGLAS COUNTY, ORE



NOTE: All angles were turned with a 20" kern theodolite and all distances were measured with a 300 foot steel chain and a H-P Distance meter. The corners of Lots 15 and 16 were set using proportionate measurement from the found street monuments as shown.

REGISTERED
OREGON
LAND SURVEYOR

Bruce R. Rogers

JULY 10, 1984
BRUCE R. ROGERS
660

P O Box 2191
Roseburg, OR.