

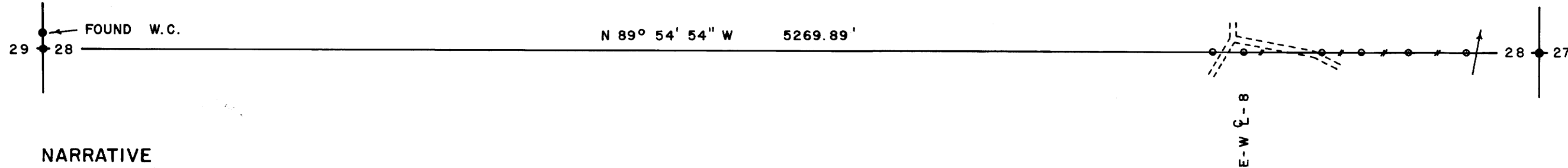
WEST 1/4 CORNER

FD. 1967 DOUGLAS COUNTY BRASS CAP
 MARKED W.C. (10.0' SOUTH TO 1/4 CORNER)
 15" FIR, S 63° E, 21.7' (SCAR VIS.), 1967 C.S.B.T.
 16" FIR, N 68° W, 8.5' (SCAR VIS.), 1967 C.S.B.T.
 ORIGINAL S.E. AND N.W. B.T.'S ARE BOTH GONE
 NOTE, POSITION FOR 1/4 COR. CALCULATED

EAST 1/4 CORNER

FD. 1966 DOUGLAS COUNTY BRASS CAP
 43" FIR, S 66° E, 11.2' (NO MARKS) , 1894 B.T.
 52" FIR, WEST , 3.1' (BARK SCRIBED), 1894 B.T.
 6" DEAD HEMLOCK, S 59° E, 7.0' (SCAR VIS.), 1966 C.S.B.T.
 8" HEMLOCK , S 30° W, 13.0' (SCAR VIS.), 1966 C.S.B.T.

FILED *BS*
 RECEIVED *BS*
 MAY 14 1982
 COUNTY SURVEYOR
 DOUGLAS COUNTY, ORE.
BS



NARRATIVE

I, LES ROBERTS, REGISTERED PROFESSIONAL LAND SURVEYOR DO CERTIFY THAT I HAVE CORRECTLY SURVEYED THE EAST-WEST CENTER LINE OF SECTION 28 IN ACCORDANCE TO THE MANUAL OF INSTRUCTIONS FOR THE SURVEY OF THE PUBLIC LANDS OF THE UNITED STATES. NO CORNERS WERE SET ON THIS SURVEY. THE PURPOSE OF THIS SURVEY IS TO POST AND BLAZE THE EAST 1150' OF THE EAST-WEST CENTER LINE OF SECTION 28. A CLOSED MEANDER TRANSIT AND E.D.M. TRAVERSE WAS RUN BETWEEN THE EAST AND WEST 1/4 CORNERS AND USED FOR CONTROL. A CLOSED MEANDER TRANSIT AND CHAIN TRAVERSE WAS RUN ALONG THE EAST-WEST CENTER LINE AS SHOWN. OFFSETS WERE COMPUTED FROM THIS MEANDER TRAVERSE TO THE TRUE PROPERTY LINE.

REGISTERED
 PROFESSIONAL
 LAND SURVEYOR
Les Roberts
 OREGON
 L. D. ROBERTS
 1039

LEGEND

- CORNERS FOUND AND USED FOR CONTROL
- LINES MARKED WITH RED PAINTED BLAZES, 1/2" x 60" IRON RODS AND RED RIBBON. A YELLOW PROPERTY LINE SIGN, WITH P.L.S. NO. 1039 STAMPED UPON, IS ATTACHED TO EACH ROD
- () DATA OF RECORD
- BASIS OF BEARING, SOLAR OBSERVATION
- DISTANCE TO BEARING TREES ARE CENTER MEASURE
- SCALE 1" = 400'

LOCATION OF 1/2" IRON RODS

E. 1/4 COR.		
E-W 8-2	256'	WEST
E-W 8-4	460'	WEST
E-W 8-5	622'	WEST
E-W 8-7	763'	WEST
E-W 8-8	1039'	WEST
E-W 8-9	1153'	WEST

SURVEY IN
 SECTION 28, T23S, R8W, W.M.
 DOUGLAS COUNTY, OREGON
 FOR
 INTERNATIONAL PAPER COMPANY
 BY
 ROBERTS SURVEYING INC.
 29 WEST 29TH STREET
 EUGENE, OREGON 97405
 MARCH 30, 1982

COUNTY SURVEYORS FILE DATA
 DO NOT REMOVE FROM OFFICE

MAP FILE M 92-3

MAP FILE M 92-3