

SECTION CORNER

FOUND: 1968 Douglas Co. Brass Cap Pipe, N 58° 29' W, 1.33' from Corner; This Mon. is a WITNESS CORNER, but is not so marked.

1/4 CORNER

FOUND: 1972 USFS 2 1/2" Brass-capped Pipe 72" Fir snag S 55° W, 37.5', No markings

SECTION CORNER

FOUND: 1964 Douglas Co. Brass-capped Pipe 47" D. Fir, N 58° E, 35.6' (Original)

PURPOSE

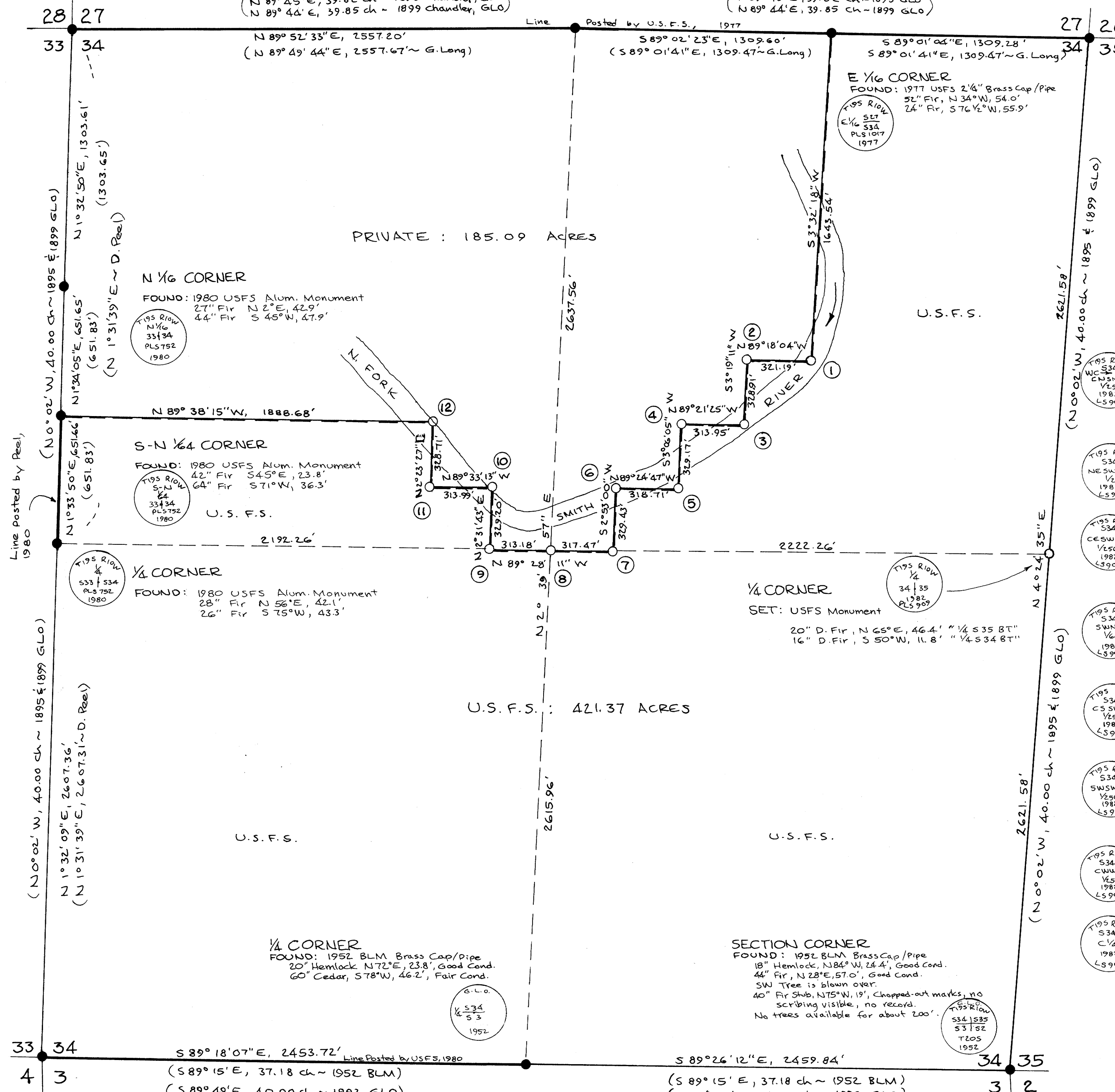
This survey was made to define the lines of the U.S. Forest Service property within Section 34. An exterior closed traverse of the section boundaries was run for control, using theodolite and EDM, with an error of closure of 1/17,000.

All monuments set, except rock tablets, are 2" x 30" aluminum pipes with 3/4" aluminum caps, with magnets under the caps.

All Bearing Trees set are scribed with the appropriate corner identification, and "S34 BT" or "X BT" where required, with a brass washer at the "BT" scribe.

SURVEY HISTORY OF SECTION 34

The south line of Section 34 was originally surveyed by Nathaniel Martin in 1892. The north, east, and west lines were originally surveyed by Henry Chandler in 1895.



- 1 CN-S-NE 1/256 CORNER SET: USFS Monument as Witness Corner
2 NE-SW-NE 1/256 CORNER SET: USFS Monument
3 CE-SW-NE 1/256 CORNER SET: USFS Monument as Witness Corner
4 SW-NE 1/4 CORNER SET: USFS Monument
5 CS-SW-NE 1/256 CORNER SET: USFS Monument
6 SW-SW-NE 1/256 CORNER SET: USFS Monument as Witness Corner
7 CW-WE 1/256 CORNER SET: USFS Monument
8 CENTER 1/4 CORNER SET: Rock Tablet Monument
9 CE-EW 1/256 CORNER SET: USFS Monument
10 SE-SE-NW 1/256 CORNER SET: USFS Monument
11 CS-SE-NW 1/256 CORNER SET: Rock Tablet Monument
12 CE-NW 1/4 CORNER SET: USFS Monument as Witness Corner

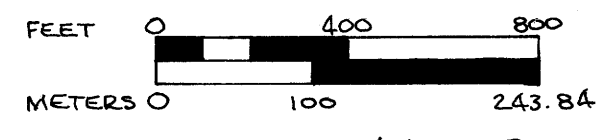
RECORD OF SURVEY PLAT FOR THE U.S. FOREST SERVICE OF SECTION 34, T 19 S, R 10 W, W.M. DOUGLAS COUNTY, OREGON JUNE, 1982

I, William L. Shull, a registered land surveyor in the State of Oregon, hereby certify that this plat and the notes hereon are a correct representation of a survey I performed in April, May, and June of 1982, for the U.S. Forest Service, in accordance with the statutes of Oregon and with the articles of my contract.

REGISTERED PROFESSIONAL LAND SURVEYOR William L. Shull OREGON JULY 11, 1969 WILLIAM L. SHULL 909 AZIMUTH SURVEYING & ENGINEERING 1560 Lancaster Dr., N.E., Salem, Oregon 97301 PH. 364-0026 Job No. 82-16

SECTION CORNER FOUND: 1952 BLM Brass Capped Pipe 18" Fir, N 57° E, 6.1', Good Cond.

Legend: GLO: Government Land Office, BLM: Bureau of Land Management, Mon: Monument Found, used for control, S: Monument Set, ( ): Data of Record

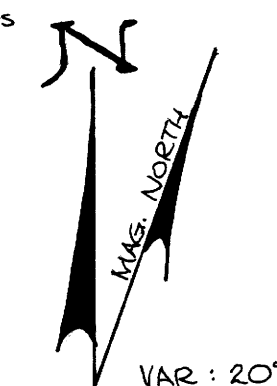


SCALE: 1" = 400' BASIS OF BEARINGS: SOLAR

REGISTERED PROFESSIONAL LAND SURVEYOR WILLIAM L. SHULL OREGON JULY 11, 1969 WILLIAM L. SHULL 909

COUNTY SURVEYORS FILE DATA

Field notes are in Books 1, 2, and 3, Paxton-Cedar Cadastral Survey CONTRACT NO. 53-04TO-2-0686N R6-12-82-44



VAR: 20'

MAP FILE 12.92-29

MAP FILE 12.92-29