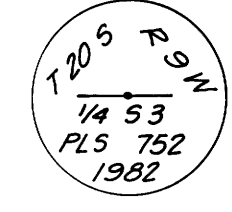


FILED 7
 RECEIVED 88
 COUNTY SURVEYORS
 DOUGLAS COUNTY, OREGON

NORTH 1/4 CORNER SEC. 3

Fd : U.S.G.L.O. BRASS CAP "1921" LYING
 BESIDE RUSTED PIPE
 SET : DROVE 1 1/2" x 36" I. PIPE OVER TOP
 OF ORIGINAL PIPE AND CEMENTED
 NEW CAP IN PIPE - NEW CAP MKD.
 42" FIR, S64°E, 44.0'
 40" FIR, 58°W, 44.2'



EAST 1/4 CORNER SEC. 3 ONLY

Fd : 1" I. PIPE WITH U.S.G.L.O.
 BRASS CAP, "1921"
 36" FIR STUMP, N35°W, 57.1'
 42" FIR STUMP, S88°W, 24.4'

1/4 CORNER SEC'S 3 & 4

Fd : 1 1/4" I. PIPE WITH DOUGLAS
 COUNTY BRASS CAP, "1975"
 54" FIR, S35°E, 23.0'
 54" FIR, N84°W, 22.0'

N 89° 58' 10" E 5286.97

1315.42 2630.83 1315.42 2656.13

NARRATIVE:

THIS SURVEY WAS MADE IN MAY AND JUNE, 1982 BY DONALD L. PEEL OF PEEL BAKER LAND SURVEYING INC., 1262 LAWRENCE ST., EUGENE, OREGON. THE PURPOSE OF THIS SURVEY WAS TO LOCATE & MARK THE BOUNDARY LINES OF THE PROPERTY OWNED BY INTERNATIONAL PAPER COMPANY IN THE SOUTHWEST 1/4 OF SECTION 3, T.20 S., R.9 W., W.M. A KERN K15 THEODOLITE, DM 502 E.D.M., JENA TH020A THEODOLITE, AND 300 FOOT CHAIN WERE USED TO PERFORM THIS SURVEY. RANDOM TRANSIT TRAVERSES WITH A MINIMUM ERROR OF CLOSURE OF 1'/5000' WERE RUN BETWEEN FOUND CORNERS FOR CONTROL. BEARINGS WERE BASED ON A SOLAR OBSERVATION. OFFSETS TO THE TRUE PROPERTY LINE WERE CALCULATED AND USED TO DETERMINE THE POSITION OF THE TRUE LINE. THE TRUE PROPERTY LINE WAS MARKED IN THE FIELD BY BLAZING TREES ON ONE SIDE OF THE TRUE LINE AND BY 1/2" x 60" REBAR SET AT RANDOM INTERVALS ON TRUE LINE. THE POSITION OF THE CENTER 1/4 CORNER WAS DETERMINED (BUT NOT SET) AT THE POINT OF INTERSECTION OF THE NORTH-SOUTH CENTERLINE AND THE EAST-WEST CENTERLINE. THE SOUTH 1/16 CORNER COMMON TO SECTIONS 3 & 4 WAS SET AT MIDPOINT BETWEEN THE SOUTHWEST SECTION CORNER AND THE WEST 1/4 CORNER. THE C-S 1/16 CORNER WAS SET ON THE NORTH-SOUTH CENTERLINE AT MIDPOINT BETWEEN THE SOUTH 1/4 CORNER AND THE CENTER 1/4 CORNER. THE SOUTHWEST 1/16 CORNER WAS SET AT THE POINT OF INTERSECTION OF THE NORTH-SOUTH AND EAST-WEST CENTERLINES OF THE SOUTHWEST 1/4. ALL CORNERS SET IN THIS SURVEY WERE MONUMENTED WITH 1 1/2" x 36" IRON PIPES WITH BRASS CAPS, WITH THE EXCEPTION OF THE C-S 1/16 CORNER.

BASIS OF BEARING : SOLAR OBSERVATION

SCALE : 1" = 200'

ALL DISTANCES TO BEARING TREES ARE CENTER MEASURE, AND BEARINGS ARE MAGNETIC, VAR. 20°

- CORNERS FOUND AND USED FOR CONTROL
- ⊙ CORNERS SET THIS SURVEY
- 1/2" x 60" REBAR SET
- PROPERTY LINE BLAZED AND POSTED WITH 1/2" x 60" REBAR
- () G.L.O. BEARING AND DISTANCE

REGISTERED
 PROFESSIONAL
 LAND SURVEYOR

Donald L. Peel

OREGON
 JULY 8, 1966
 DONALD L. PEEL
 752

SURVEY OF
S.W. 1/4 SECTION 3, T.20 S., R. 9 W., W.M.
DOUGLAS COUNTY, OREGON
 FOR
INTERNATIONAL PAPER COMPANY
 BY
PEEL BAKER LAND SURVEYING, INC.

JUNE 8, 1982 COUNTY SURVEYORS FILE DATA
 DO NOT REMOVE FROM OFFICE

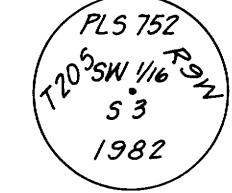
SOUTH 1/16 CORNER SEC'S 3 & 4

SET : 1 1/2" x 36" I. PIPE WITH BRASS CAP MKD.
 40" FIR, N57°W, 62.5'
 19" FIR, N43°E, 76.7



S.W. 1/16 CORNER SEC. 3

SET : 1 1/2" x 36" I. PIPE WITH BRASS CAP MKD.
 46" FIR, S83°W, 27.0'
 34" FIR, N12°E, 34.9'



C-S 1/16 CORNER SEC. 3

SET : BRASS CAP IN SHEET OF SANDSTONE
 BRASS CAP IS MKD.
 54" FIR, N87°W, 95.5'
 20" MAPLE, N35°E, 76.1'
 1/2" x 60" REBAR, WEST, 3.5'

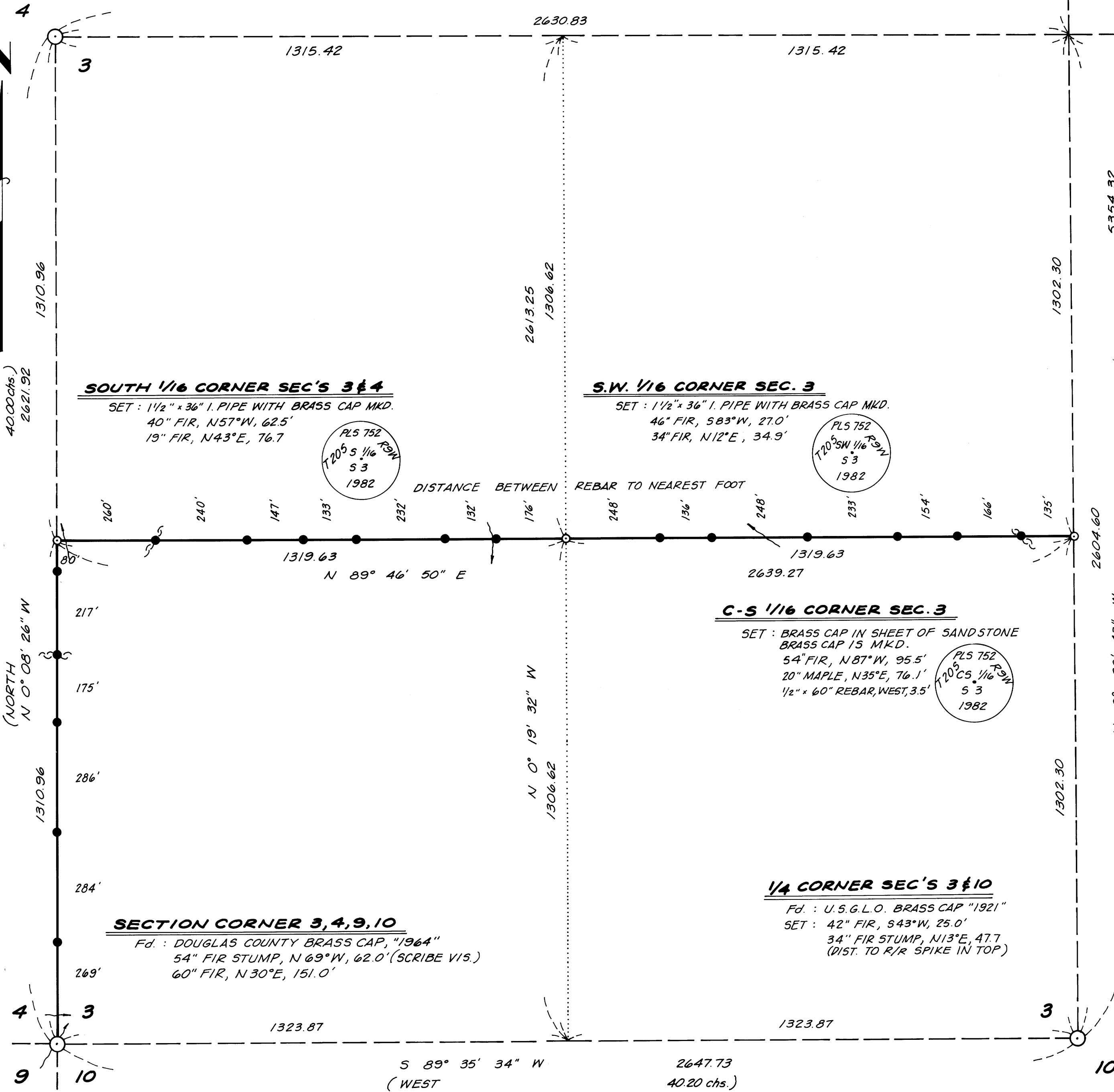


1/4 CORNER SEC'S 3 & 10

Fd : U.S.G.L.O. BRASS CAP "1921"
 SET : 42" FIR, S43°W, 25.0'
 34" FIR STUMP, N13°E, 47.7
 (DIST. TO R/R SPIKE IN TOP)

SECTION CORNER 3, 4, 9, 10

Fd : DOUGLAS COUNTY BRASS CAP, "1964"
 54" FIR STUMP, N 69°W, 62.0' (SCRIBE VIS.)
 60" FIR, N30°E, 151.0'



M 92-28

M 92-28