

COUNTY SURVEYORS FILE DATA  
 NOT REMOVE FROM OFFICE

# Resurvey and Subdivision of S 1/2 & NE 1/4 Section 4, T 24 S, R 6 W, W. M., Oregon

For Roseburg Lumber Company

May 6, 1982

FILED *BJ*  
 RECEIVED *JL*

JUN 15 1982

COUNTY SURVEYOR  
 DOUGLAS COUNTY, ORE.

*BJ*

Scale: 1" = 400'

I ran a closed traverse in Section 4 using a Jena 1 second theodolite and a Mac I-E EDM. I achieved a precision of 1:14100 and adjusted the traverse by the Crandall method. I set the corners by standard subdivision procedure based on the location of the existing monuments.

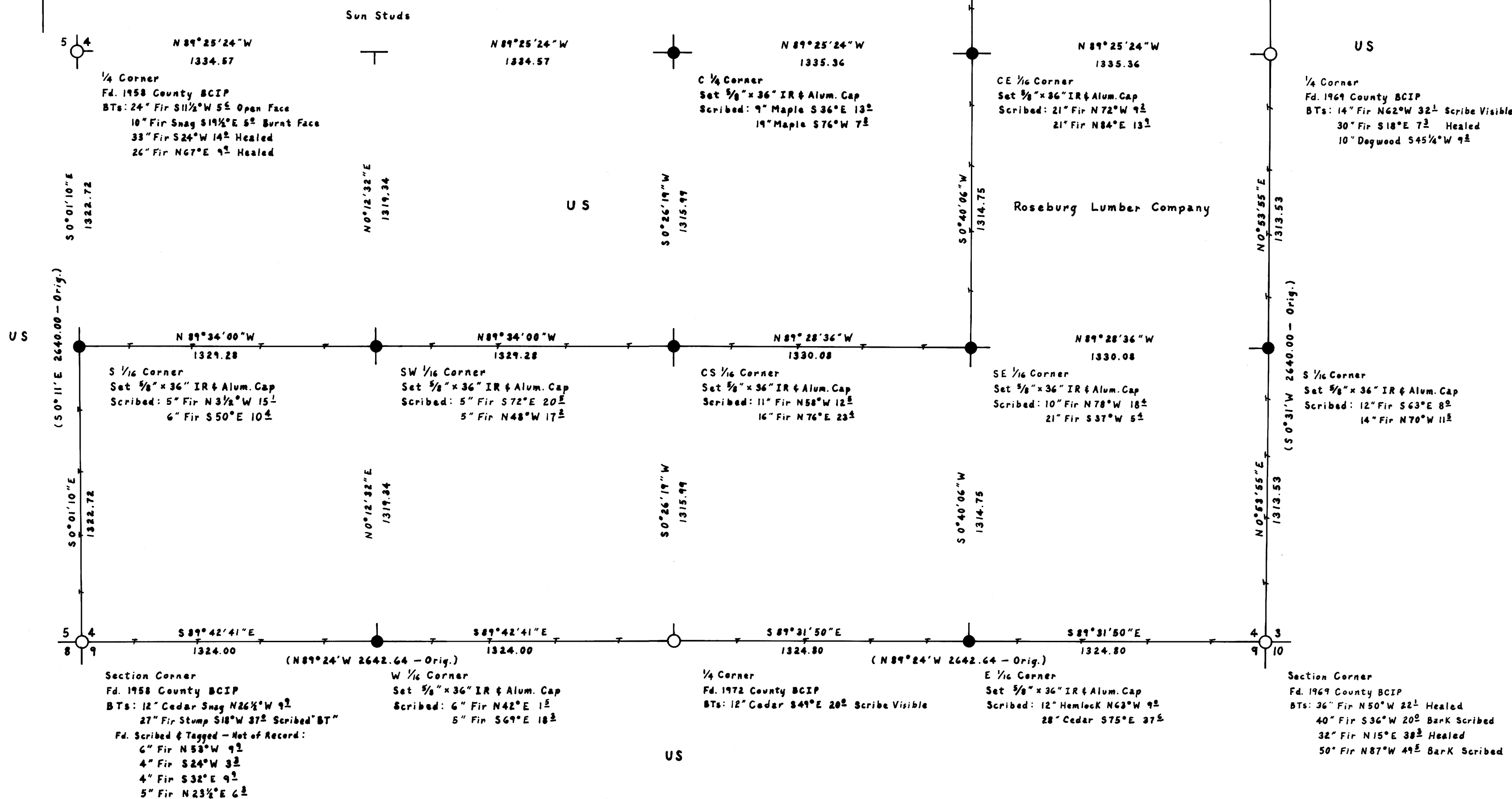
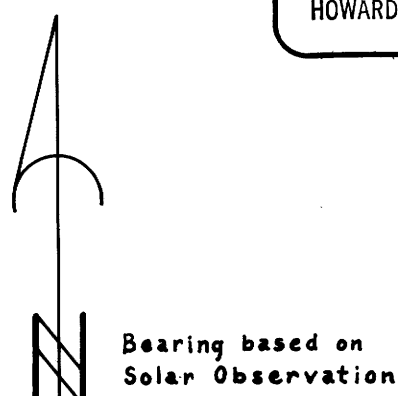
Howard W. Johnstone P.O. Box 1088 Roseburg, Oregon

REGISTERED  
 PROFESSIONAL  
 LAND SURVEYOR

*Howard W. Johnstone*

OREGON  
 MAY 13, 1960  
 HOWARD W. JOHNSTONE  
 498

- Legend**
- Monument Found
  - Set 3/8" IR & Alum. Cap Marked "LS 498"
  - Roseburg Lumber Co. Property Line
  - Line Referenced to Alum. Tags
  - ( ) Record Data



MAP FILE 22-22-17

MAP FILE 22-22-17