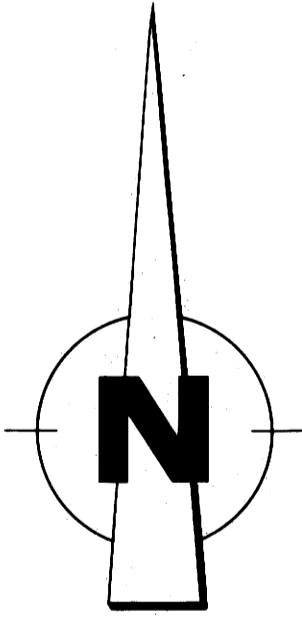
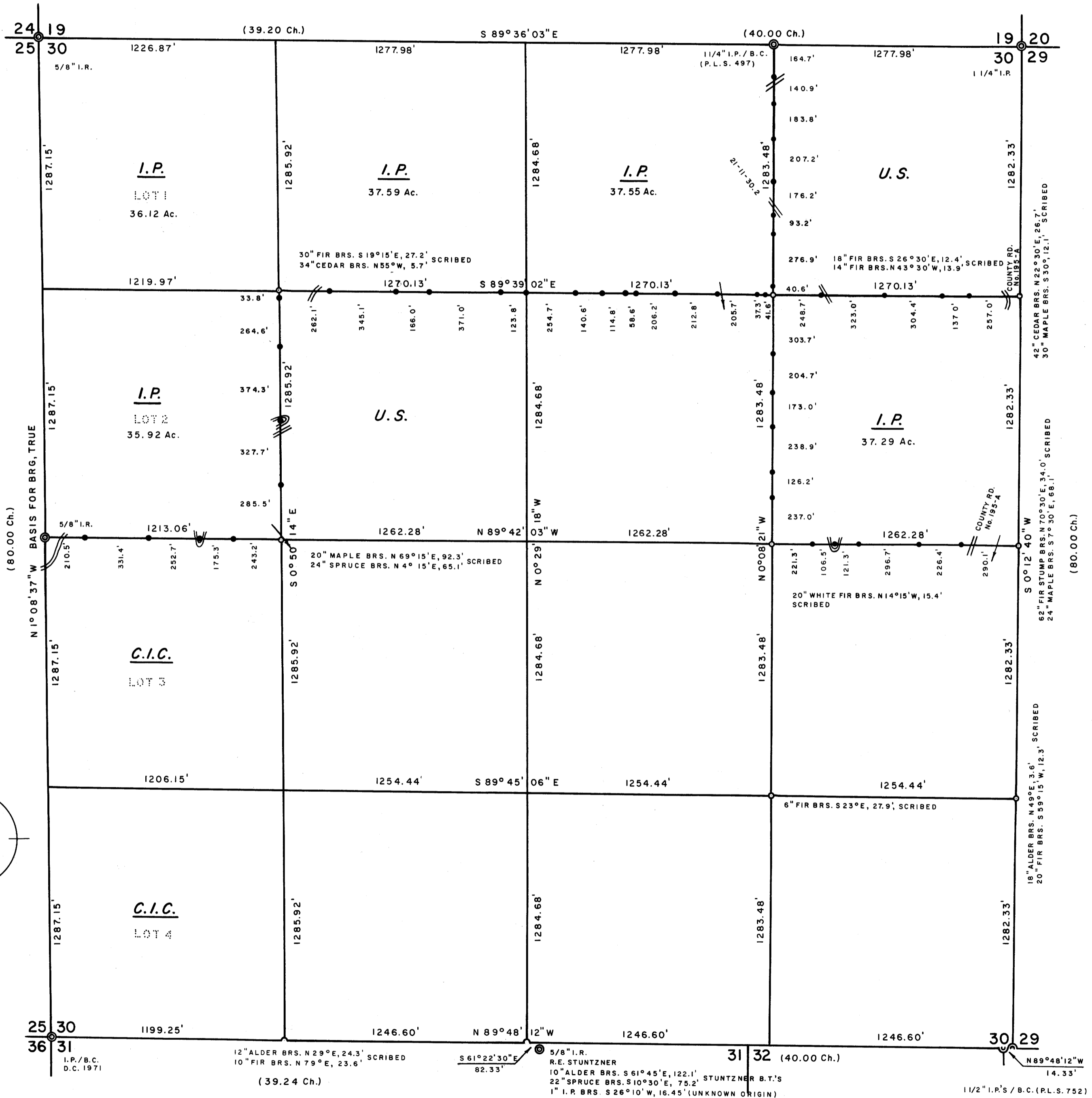


# AMENDED SURVEY SECTION 30, T21S, R11W FOR INTERNATIONAL PAPER CO. CHAMPION INTERNATIONAL CORP. SCALE 1" = 400' MAY 1982

FILED *BJ*  
RECEIVED *BJ*  
JUN 4 1982

COUNTY SURVEYOR  
DOUGLAS COUNTY, ORE.  
*BJ*



### LEGEND

CORNERS FOUND  $\odot$   
 SET 1/4 x 3/8" I.P.'S / STAMPED BRASS CAPS (P.L.S. 497)  $\circ$   
 PROPERTY LINES ESTABLISHED, 1/2 x 60" I.R.'S  
 WITH ATTACHED ALUMINUM SIGNS  $\bullet$   
 (G.L.O. ORIGINAL SURVEY)

### NOTES

1. THIS SURVEY WAS MADE TO AMEND SURVEYS M 70-10, MARCH 1978 AND M 70-74, JUNE 1979. THE ORIGINAL SOUTH 1/4 CORNER OF SECTION 29 WAS FOUND IN 1981 WHICH VOIDED MY PREVIOUS SURVEYS. THE MONUMENTS FOR THE ABOVE SURVEYS WERE REMOVED AND THEIR BEARING TREES OBLITERATED IN ORDER TO AVOID CONFUSION.
2. THE SECTION WAS SUBDIVIDED IN ACCORDANCE WITH THE B.L.M. MANUAL OF SURVEY INSTRUCTIONS.
3. DISTANCES ARE TAKEN TO 50d NAIL IN THE CENTER OF EACH BEARING TREE.

REGISTERED  
PROFESSIONAL  
LAND SURVEYOR

*Richard J. Hintz*

OREGON  
MAY 13, 1980  
RICHARD J. HINTZ  
497

RICHARD J. HINTZ  
1890 N. 14th ST.  
COOS BAY, OREGON