

SURVEY IN NE 1/4 OF SECTION 19, T27S, R5W, W.M.

LOT 14, BLOCK 1, "BOGARD ADDITION"

SCALE: 1" = 30'

COUNTY SURVEYORS FILE DATA  
DO NOT REMOVE FROM OFFICE

APRIL 1982

FILED *BS*  
RECEIVED *BS*

MAY 12 1982

COUNTY SURVEYOR  
DOUGLAS COUNTY, ORE.  
*BS*

FOR: HELEN LASSITER  
BY: BHW ENGINEERING & SURVEYING, INC.  
1205 S.E. COURT  
ROSEBURG, OREGON

LEGEND:

- - SET 5/8" x 30" IRON ROD WITH CAP MARKED "BHW, INC."
- - FOUND 5/8" IRON ROD UNLESS OTHERWISE NOTED

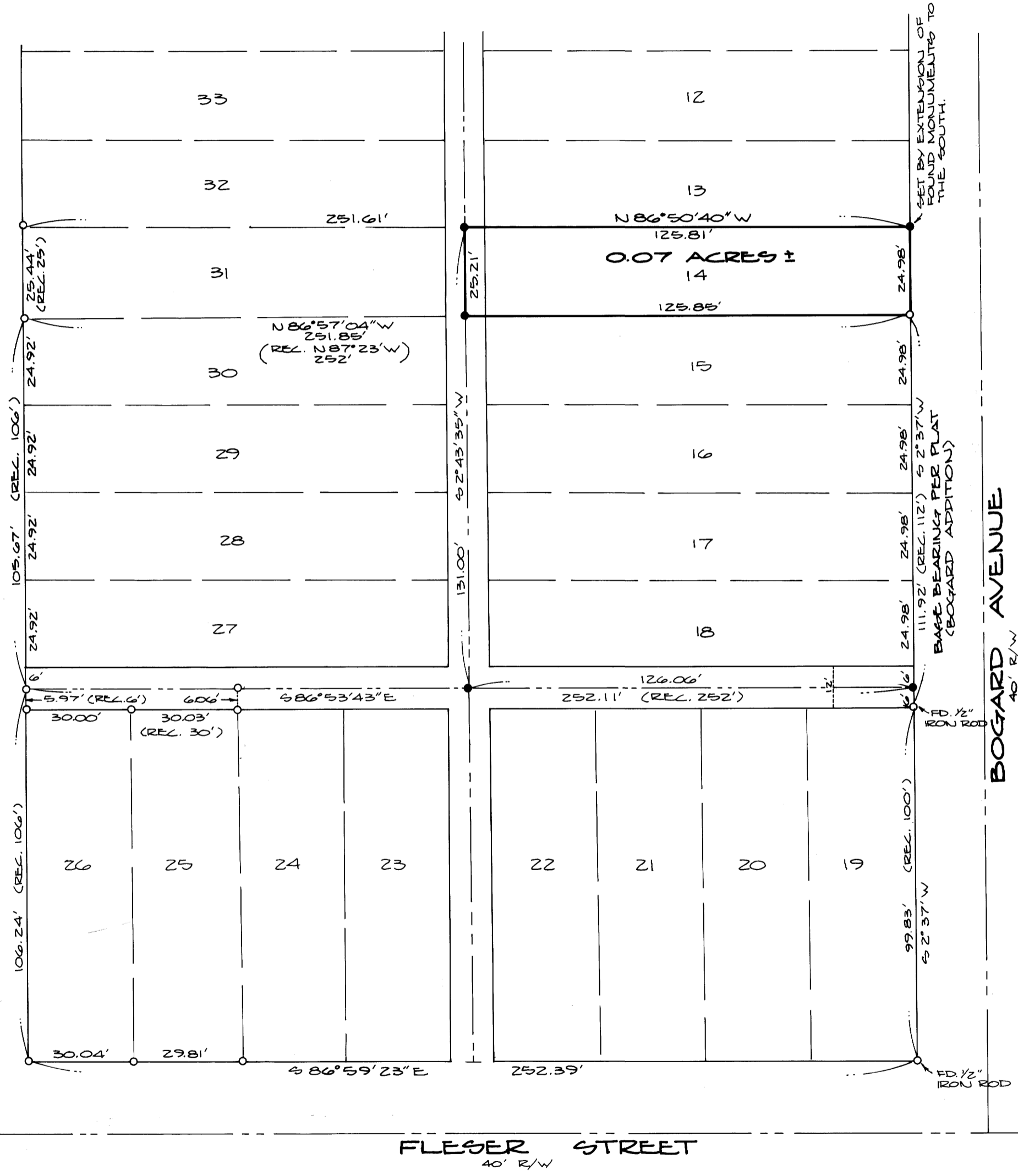
NARRATIVE:

SURVEY TO MONUMENT LOT 14 OF BLOCK 1 OF "BOGARD ADDITION" AS RECORDED IN VOL. 4, PAGE 13 IN THE PLAT RECORDS OF DOUGLAS COUNTY, OREGON.  
FIELD CREW: R. QUIMBY & G. LANG.  
EQUIPMENT: LEITZ RED-1 E.D.M. MOUNTED ON WILD T-1 THEODOLITE.  
OFFICE: R. WARE (COMPUTATIONS) & D. HOPKINS (DRAFTING).  
SEE ORIGINAL PLAT FOR RECORD MEASUREMENTS.  
FOR OTHER RECORD MEASUREMENTS AND MONUMENTS SEE M 29-57, M73-58, M77-51 AND M78-56.

REGISTERED  
PROFESSIONAL  
LAND SURVEYOR

*Romanso E. Ware*

OREGON  
NOV. 16, 1973  
ROMANSO E. WARE  
1005



MAP FILE M. 91 - 80

MAP FILE M. 91 - 80