

FILED *BS*
RECEIVED *BS*
MAY 4 1982
COUNTY SURVEYOR
DOUGLAS COUNTY, ORE
BS

LOCATION OF 1/2" IRON RODS

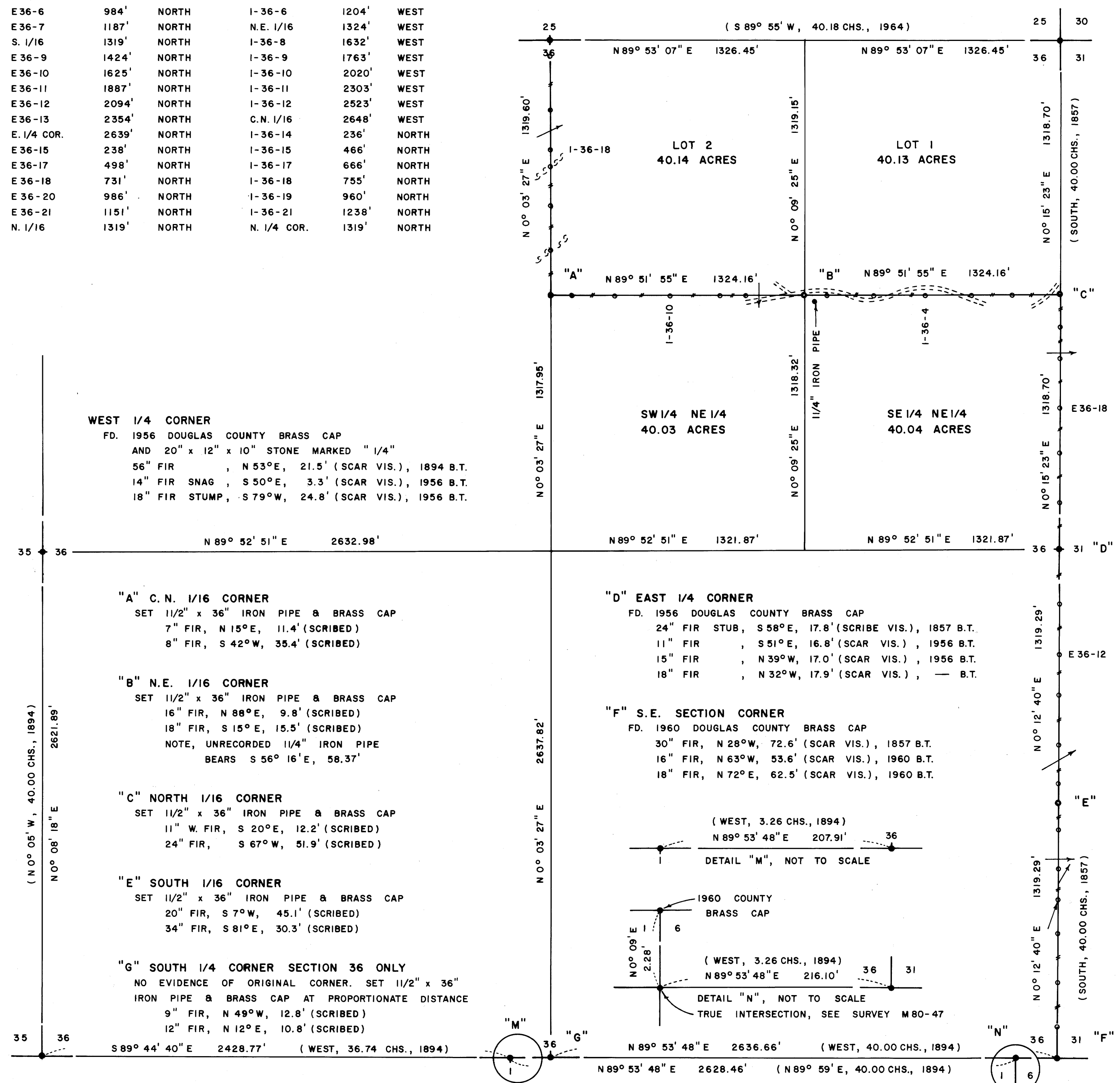
S.E. SEC. COR.		N 1/16 COR.			
E 36-1	164'	NORTH	1-36-1	249'	WEST
E 36-3	397'	NORTH	1-36-3	453'	WEST
E 36-4	650'	NORTH	1-36-4	696'	WEST
E 36-5	827'	NORTH	1-36-5	962'	WEST
E 36-6	984'	NORTH	1-36-6	1204'	WEST
E 36-7	1187'	NORTH	N.E. 1/16	1324'	WEST
S. 1/16	1319'	NORTH	1-36-8	1632'	WEST
E 36-9	1424'	NORTH	1-36-9	1763'	WEST
E 36-10	1625'	NORTH	1-36-10	2020'	WEST
E 36-11	1887'	NORTH	1-36-11	2303'	WEST
E 36-12	2094'	NORTH	1-36-12	2523'	WEST
E 36-13	2354'	NORTH	C.N. 1/16	2648'	WEST
E. 1/4 COR.	2639'	NORTH	1-36-14	236'	NORTH
E 36-15	238'	NORTH	1-36-15	466'	NORTH
E 36-17	498'	NORTH	1-36-17	666'	NORTH
E 36-18	731'	NORTH	1-36-18	755'	NORTH
E 36-20	986'	NORTH	1-36-19	960'	NORTH
E 36-21	1151'	NORTH	1-36-21	1238'	NORTH
N. 1/16	1319'	NORTH	N. 1/4 COR.	1319'	NORTH

NORTH 1/4 CORNER
FD. 1964 B.L.M. BRASS CAP
14" HEMLOCK, S 15° E, 25.7' (SCAR VIS.), 1964 B.T.
SET 8" CEDAR, N 73 1/2° W, 24.0' (SCRIBED)

N.E. SECTION CORNER
FD. 1957 DOUGLAS COUNTY BRASS CAP
24" FIR STUMP, N 67° W, 64.7' (SCRIBE VIS.), 1857 B.T.
14" FIR, N 68° W, 11.4' (SCAR VIS.), 1957 B.T.
15" FIR, S 29° W, 9.1' (SCAR VIS.), 1957 B.T.
15" FIR, S 47° E, 16.5' (SCAR VIS.), 1957 B.T.
18" FIR, N 44° E, 13.5' (SCAR VIS.), 1957 B.T.

SURVEY OF
SECTION 36, T23S, R8W, W.M.
DOUGLAS COUNTY, OREGON
FOR
INTERNATIONAL PAPER COMPANY
BY
ROBERTS SURVEYING INC.
29 WEST 29TH STREET
EUGENE, OREGON 97405
MARCH 30, 1982

- LEGEND
- CORNERS FOUND AND USED FOR CONTROL
 - CORNERS SET, ALL CORNERS ARE 1/2" x 36" IRON PIPES & BRASS CAPS STAMPED S-T-R, DATE AND P.L.S. NO. 1039
 - 60" IRON RODS AND RED RIBBON. A YELLOW PROPERTY LINE SIGN, WITH P.L.S. NO. STAMPED UPON, IS ATTACHED TO EACH ROD
 - () DATA OF RECORD, 1857, 1894 AND 1964
 - BASIS OF BEARING, SOLAR OBSERVATION
 - DISTANCE TO BEARING TREES ARE CENTER MEASURE
 - ALL BEARING TREES ARE SCRIBED
 - SCALE 1" = 400'



WEST 1/4 CORNER
FD. 1956 DOUGLAS COUNTY BRASS CAP
AND 20" x 12" x 10" STONE MARKED "1/4"
56" FIR, N 53° E, 21.5' (SCAR VIS.), 1894 B.T.
14" FIR SNAG, S 50° E, 3.3' (SCAR VIS.), 1956 B.T.
18" FIR STUMP, S 79° W, 24.8' (SCAR VIS.), 1956 B.T.

"A" C.N. 1/16 CORNER
SET 1 1/2" x 36" IRON PIPE & BRASS CAP
7" FIR, N 15° E, 11.4' (SCRIBED)
8" FIR, S 42° W, 35.4' (SCRIBED)

"B" N.E. 1/16 CORNER
SET 1 1/2" x 36" IRON PIPE & BRASS CAP
16" FIR, N 88° E, 9.8' (SCRIBED)
18" FIR, S 15° E, 15.5' (SCRIBED)
NOTE, UNRECORDED 1 1/4" IRON PIPE BEARS S 56° 16' E, 58.37'

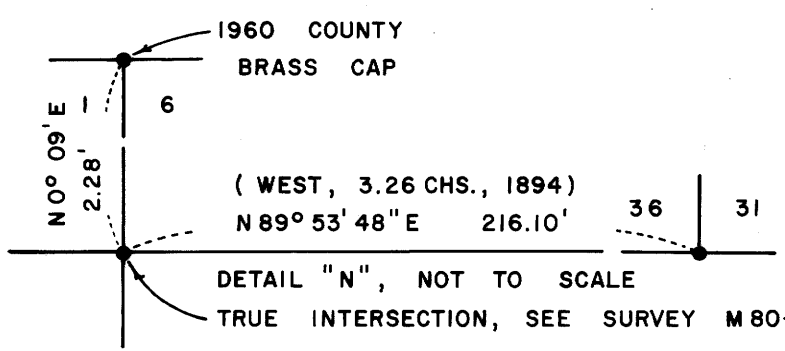
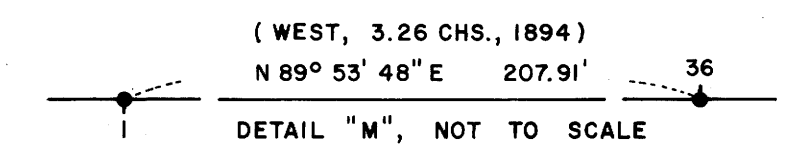
"C" NORTH 1/16 CORNER
SET 1 1/2" x 36" IRON PIPE & BRASS CAP
11" W. FIR, S 20° E, 12.2' (SCRIBED)
24" FIR, S 67° W, 51.9' (SCRIBED)

"E" SOUTH 1/16 CORNER
SET 1 1/2" x 36" IRON PIPE & BRASS CAP
20" FIR, S 7° W, 45.1' (SCRIBED)
34" FIR, S 81° E, 30.3' (SCRIBED)

"G" SOUTH 1/4 CORNER SECTION 36 ONLY
NO EVIDENCE OF ORIGINAL CORNER. SET 1 1/2" x 36" IRON PIPE & BRASS CAP AT PROPORTIONATE DISTANCE
9" FIR, N 49° W, 12.8' (SCRIBED)
12" FIR, N 12° E, 10.8' (SCRIBED)

"D" EAST 1/4 CORNER
FD. 1956 DOUGLAS COUNTY BRASS CAP
24" FIR STUB, S 58° E, 17.8' (SCRIBE VIS.), 1857 B.T.
11" FIR, S 51° E, 16.8' (SCAR VIS.), 1956 B.T.
15" FIR, N 39° W, 17.0' (SCAR VIS.), 1956 B.T.
18" FIR, N 32° W, 17.9' (SCAR VIS.), — B.T.

"F" S.E. SECTION CORNER
FD. 1960 DOUGLAS COUNTY BRASS CAP
30" FIR, N 28° W, 72.6' (SCAR VIS.), 1857 B.T.
16" FIR, N 63° W, 53.6' (SCAR VIS.), 1960 B.T.
18" FIR, N 72° E, 62.5' (SCAR VIS.), 1960 B.T.



S.W. SECTION CORNER
FD. 1964 DOUGLAS COUNTY BRASS CAP
48" FIR STUMP, N 5° W, 28.8' (SCRIBE VIS.), 1894 B.T.
50" FIR STUMP, S 47° W, 20.9' (SCRIBE VIS.), 1894 B.T.
64" FIR, N 75° E, 34.2' (NO MARKS), 1894 B.T.
11" FIR, N 75° W, 6.8' (SCAR VIS.), 1964 B.T.
15" FIR, N 20° E, 16.6' (SCAR VIS.), 1964 B.T.

NORTH 1/4 CORNER SECTION 1 ONLY
FD. 1965 DOUGLAS COUNTY BRASS CAP
30" FIR SNAG, N 16 1/2° W, 40.3' (SCRIBE VIS.), 1894 B.T.
9" FIR, S 67° W, 18.5' (SCAR VIS.), 1965 B.T.
12" FIR, S 01° E, 15.7' (SCAR VIS.), 1965 B.T.

CLOSING CORNER SECTIONS 1 AND 6
FD. 1960 DOUGLAS COUNTY BRASS CAP
14" W. FIR, EAST, 32.8' (SCAR VIS.), 1966 B.T.
14" FIR, S 53° W, 74.2' (SCAR VIS.), 1966 B.T.
FD. 1979 INTERNATIONAL PAPER CO. BRASS CAP (SEE SURVEY M 80-47)
8" FIR, S 55° E, 11.2' (SCRIBE VIS.), 1979 B.T.
12" FIR, S 62° W, 64.1' (SCRIBE VIS.), 1979 B.T.

Les Roberts
SURVEYOR

MAP FILE 12291-274

MAP FILE 12291-274