

COUNTY SURVEYORS FILE DATA NO WILL BECOME FROM OFFICE

SURVEY IN THE NW 1/4, SECTION 15, T27S, R6W, W.M.

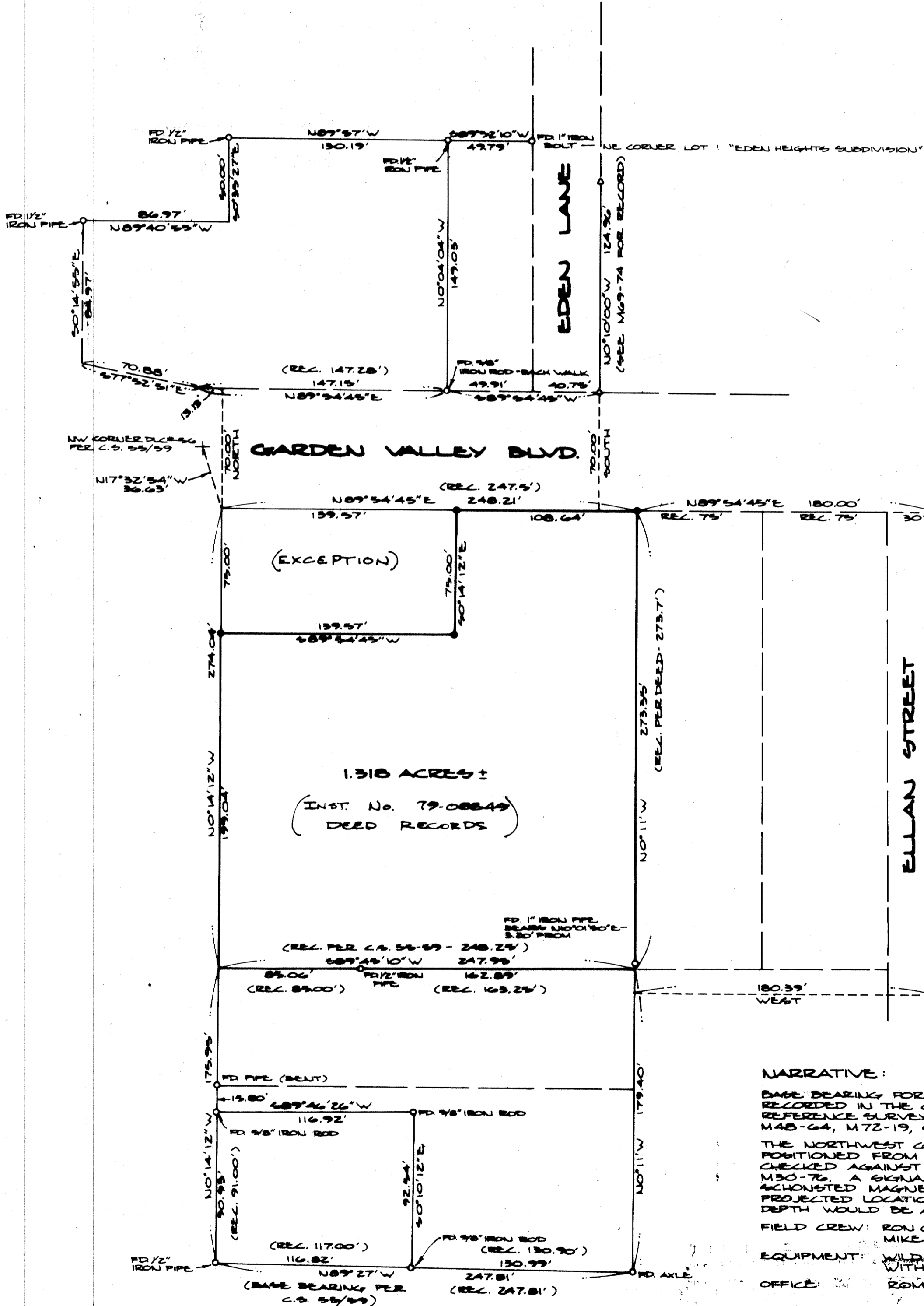
FOR: THUNDERBIRD MOTEL
BY: BHW ENGINEERING & SURVEYING, INC.
205 4E. COURT - ROSEBURG, OREGON

FILED *BS*
RECEIVED *BS*
APR 20 1982
COUNTY SURVEYOR
DOUGLAS COUNTY, OREG.
BS

SCALE: 1" = 50'
MARCH 1982

LEGEND:

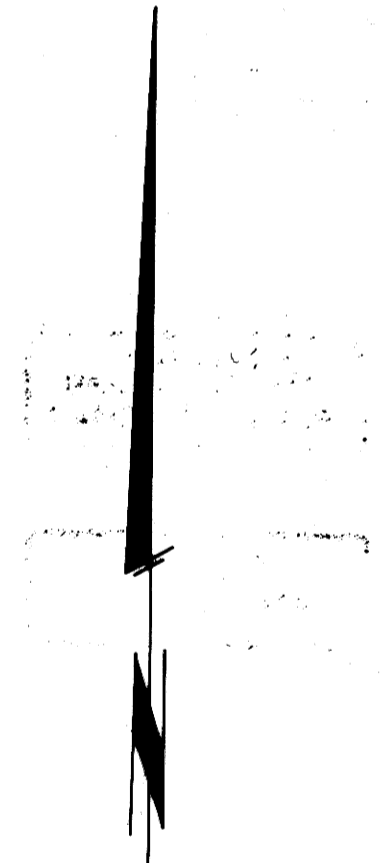
- - SET 5/8" x 30" IRON ROD W/CAP MARKED "BHW, INC."
- - FOUND MONUMENT AS NOTED
- △ - FOUND "X" MARKED IN SIDEWALK



REGISTERED
PROFESSIONAL
LAND SURVEYOR

Romano E. Ware

OREGON
NOV. 18, 1978
ROMANSO E. WARE
1005



NARRATIVE:

BASE BEARING FOR SURVEY IS C.S. 55/59 AS RECORDED IN THE COUNTY SURVEYOR'S OFFICE. REFERENCE SURVEYS: M65-6, M30-76, M69-74, M48-64, M72-19, C.S. 51/40 AND C.S. 51/54.

THE NORTHWEST CORNER OF D.L.C. # 56 WAS POSITIONED FROM SURVEY C.S. 55/59 AND CHECKED AGAINST SURVEYS M18-64 AND M30-76. A SIGNAL WAS RECEIVED IN THE MENTIONED MAGNETIC LOCATOR NEAR THE PROJECTED LOCATION AND AN ESTIMATE OF DEPTH WOULD BE APPROXIMATELY 2 FEET.

FIELD CREW: RON QUIMBY, GREG LANG AND MIKE RADELIFFE.

EQUIPMENT: WILD T-1 THEODOLITE MOUNTED WITH LEITZ RED-1 E.D.M.

OFFICE: ROMNEY WARE & DEBBIE HOPKINS.