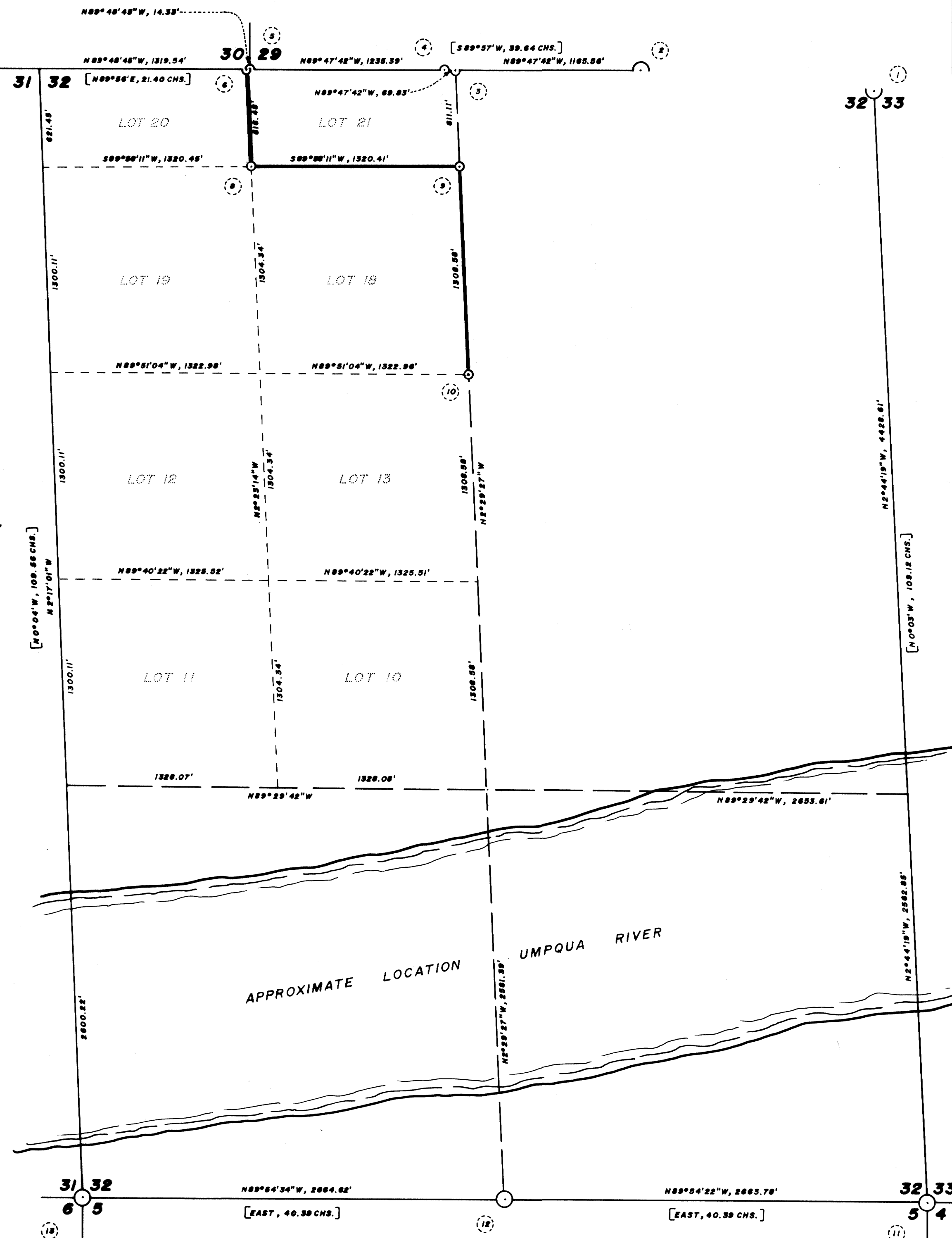


25 30  
 36 31



**NARRATIVE**

THIS SURVEY WAS MADE IN MARCH, 1982 BY DONALD L. PEEL OF PEEL BAKER LAND SURVEYING INC., 1562 LAWRENCE, EUGENE, OREGON. THE PURPOSE OF THIS SURVEY WAS TO LOCATE AND MARK THE BOUNDARY OF THE PROPERTY OWNED BY DAVIDSON INDUSTRIES INC. A KERN K15 THEODOLITE AND DM 502 E.D.M. WERE USED TO PERFORM THIS SURVEY. RANDOM TRANSIT TRAVERSES, WITH A MINIMUM ERROR OF CLOSURE OF 1/12000, WERE RUN BETWEEN FOUND CORNERS FOR CONTROL. BEARINGS WERE BASED ON A SOLAR OBSERVATION. OFFSETS TO THE TRUE PROPERTY LINE WERE CALCULATED AND USED TO DETERMINE THE POSITION OF THE TRUE LINE. THE TRUE PROPERTY LINE WAS MARKED IN THE FIELD BY BLAZING TREES ON BOTH SIDES OF THE TRUE LINE. THE SECTION CORNER COMMON TO SECTIONS 29 & 30 WAS NOT REESTABLISHED BY THE THREE POINT METHOD DUE TO EXCESSIVE DISTORTION. AFTER CONSULTATION WITH THE S.L.M. CADASTRAL ENGINEER, I REESTABLISHED SAID CORNER BY THE (IRREGULAR BOUNDARY METHOD (1975 Manual, 5-36)). THE POSITIONS OF THE CLOSING CORNER BETWEEN SECTIONS 31 & 32, THE 1/4 CORNER BETWEEN 31 & 32, AND THE 1/4 CORNER BETWEEN 32 & 33 WERE DETERMINED BY SINGLE PROPORTION. THESE CORNERS WERE NOT REESTABLISHED IN THE FIELD. THE NORTH 1/4 CORNER OF SECTION 32 WAS ESTABLISHED ON THE SECTION LINE (SOUTH OF SECTION 29) AT THE MIDPOINT OF DEPARTURES OF CLOSING CORNER 31 & 32 (as determined) AND CLOSING CORNER 32 & 33 (as found). THE REMAINING CORNERS ESTABLISHED IN THIS SURVEY WERE SET BY EITHER SINGLE PROPORTION OR INTERSECTION IN ACCORDANCE TO THE RULES AS SET FORTH IN THE Manual of Instructions for the Survey of the Public Lands of the United States. ALL CORNERS SET IN THIS SURVEY WERE IRON PIPES WITH BRASS CAPS (SEE CORNER DATA FOR DESCRIPTIONS). IN ADDITION TO THE REGULAR MARKINGS (AS PER THE Manual) EACH CAP WAS MARKED "PLS752".

**CORNER DATA**

- 1 CLOSING CORNER 32 & 33  
 FOUND: 1" BAR WITH BRASS DISC MKD. "WILFORD N. HAINES 239"  
 20" SPRUCE, N 8 W, 35.2'  
 34" ALDER, S 33 E, 47.2'  
 48" SPRUCE STUB, N 27 W, 17.9'
- 2 S 1/4 CORNER SECTION 29  
 FOUND: 1 1/2" IRON PIPE WITH BRASS CAP "PLS752 1981"  
 63" FIR, S 14 E, 33.0' (ORIGINAL B.T. - BARK SCRIBED)  
 29" FIR, N 27 E, 32.5'
- 3 N 1/4 CORNER SECTION 32  
 SET: 1 1/2" X 40" IRON PIPE WITH BRASS CAP  
 27" FIR, S 77 E, 7.0'  
 16" FIR, S 43 W, 18.0'  
 NOTE: 3/4" PIPE OF UNKNOWN ORIGIN BEARS S 64° 00' 10" W, 41.00'
- 4 W 1/16 CORNER SECTION 29  
 SET: 1 1/2" X 36" IRON PIPE WITH BRASS CAP  
 10" FIR, N 82 E, 24.5'  
 20" FIR, N 32 W, 2.5'  
 NOTE: 1" PIPE OF UNKNOWN ORIGIN BEARS S 52° 00' 15" W, 31.21'
- 5 SECTION CORNER 29 & 30  
 SET: 1 1/2" X 36" IRON PIPE WITH BRASS CAP  
 10" MAPLE, N 41 E, 48.7'  
 NOTE: 3/4" PIPE OF UNKNOWN ORIGIN BEARS S 51° 40' 30" W, 47.80'
- 6 W 1/16 CORNER SECTION 32  
 SET: 1 1/2" X 40" IRON PIPE WITH BRASS CAP  
 16" FIR, S 37 E, 28.0'  
 14" FIR, S 28 W, 58.1'  
 NOTE: 3/4" PIPE OF UNKNOWN ORIGIN BEARS S 32° 42' 53" W, 52.47'
- 7 SECTION CORNER 29, 30, 31, 32  
 FOUND: 1 1/4" IRON PIPE WITH BRASS CAP (DOUGLAS CO. 1971)  
 30" FIR, NORTH, 32.2'  
 48" W. FIR STUMP, N 48 E, 48.8'  
 6" SPRUCE, N 55 W, 38.5'
- 8 W 1/16 100 SECTION 32  
 SET: 1 1/2" X 36" IRON PIPE WITH BRASS CAP  
 14" FIR, S 4 E, 11.3'  
 20" FIR, S 77 W, 30.1'
- 9 C 1/16 100 SECTION 32  
 SET: 1 1/4" X 42" IRON PIPE WITH BRASS CAP  
 12" ALDER, S 33 E, 152.5' (BARK SCRIBED)  
 10" FIR, S 28 W, 107.0'
- 10 C 1/16 90 SECTION 32  
 SET: 1 1/2" X 40" IRON PIPE WITH BRASS CAP  
 15" FIR, S 23 E, 3.3'  
 16" FIR, N 5 W, 10.8'
- 11 SECTION CORNER 32, 33, 4, 5  
 FOUND: 1 1/4" IRON PIPE WITH BRASS CAP (DOUGLAS CO. 1971)  
 44" SPRUCE, S 3 W, 388.5'
- 12 1/4 CORNER 32 & 3  
 FOUND: 1 1/4" IRON PIPE WITH BRASS CAP (DOUGLAS CO. 1971)  
 NO B.T.'s
- 13 SECTION CORNER 31, 32, 5, 6  
 FOUND: 1 1/4" IRON PIPE WITH BRASS CAP (DOUGLAS CO. 1971)  
 NO B.T.'s

BASIS OF BEARING: SOLAR OBSERVATION  
 SCALE: 1" = 500'

DISTANCES TO BEARING TREES ARE CENTER MEASURE AND BEARINGS ARE MAGNETIC, VAR. 20°

- CORNERS FOUND AND USED FOR CONTROL
- CORNERS SET THIS SURVEY
- PROPERTY LINE BLAZED
- [ ] S.L.O. BEARING AND DISTANCE

REGISTERED  
 PROFESSIONAL  
 LAND SURVEYOR  
 Donald L. Peel  
 OREGON  
 JULY 9, 1968  
 DONALD L. PEEL  
 752

SURVEY OF  
 NW 1/4 SECTION 32, T21S, R11W, W.M.  
 DOUGLAS COUNTY, OREGON  
 FOR  
 DAVIDSON INDUSTRIES INC.  
 BY  
 PEEL BAKER LAND SURVEYING INC.  
 MARCH 30, 1982

MAP FILE M 21-623  
 COUNTY SURVEYORS FILE DATA  
 DO NOT REMOVE FROM OFFICE

MAP FILE M 21-623