

① COR. SEC'S. 32, 33, T. 20S, R. 12W, SEC'S. 4, 5, T. 21S, R. 12W, FOUND: A 3" DIAM. ALUM. CAP SET 8" ABOVE IN A 2" DIAM. ALUM. PIPE AND STAMPED PER SKETCH, FROM WHICH CAP BEARS A 6" D.B.H. ALDER, N.35°E., (47 LKS.), 30.7', BARK SCRIBED T20S R12W S33 BT, A 12" D.B.H. SPRUCE, S.61°E., (51 LKS.), 33.7', SCRIBED T21S R12W S4 BT, A 12" D.B.H. SPRUCE, S.71°W, 83.1', SCRIBED T21S R12W S5 BT, AND A 10" D.B.H. SPRUCE, N.68°W, (135 LKS.), 89.2', SCRIBED T20S R12W S32 BT.

② 1/4 COR. S4E S5, FOUND: 3" DIAM. BRASS CAP SET AT GROUND LEVEL IN A 2" DIAM. GALVANIZED IRON PIPE AND STAMPED PER SKETCH, FROM WHICH CAP BEARS A 20" D.B.H. SPRUCE, N.38°W, 16.6', SCRIBED 1/4 S5 BT, AND A 6" D.B.H. SPRUCE, N.71°E., 16.8', SCRIBED 1/4 S4 BT.

③ COR. SEC'S. 4, 5, 8E 9, FOUND: 3" DIAM. U.S.D.I., B.L.M. ALUM. CAP SET 4" ABOVE GROUND IN A 2" DIAM. ALUM. PIPE AND STAMPED PER SKETCH FROM WHICH BEARS, A 20" D.B.H. DOUGLAS FIR, N.45°W, (15 LKS.), 9.6', SCRIBED T21S R12W S5 BT, A 16" D.B.H. SPRUCE, N.82°E., (47 LKS.), 17.5', SCRIBED T21S R12W S4 BT, A 24" D.B.H. SPRUCE, S.20°E., (38 LKS.) 25.3', SCRIBED T21S R12W S9 BT, AND A 16" D.B.H. SPRUCE, S.38 1/4°W, (66 LKS.), 43.4', SCRIBED T21S R12W S8 BT.

④ 1/4 COR. SEC'S. 5E 8, FOUND: A 3" DIAM. ALUM. U.S.D.I., B.L.M. CAP SET 8" ABOVE GROUND IN A 2" DIAM. ALUM. PIPE AND STAMPED PER SKETCH, FROM WHICH BEARS A 14" D.B.H. SPRUCE, N.70°W, (19 LKS.), 12.27', SCRIBED 1/4 S5 BT, AND A 26" D.B.H. SPRUCE, S.85 1/2°E., (32 LKS.), 21.3', SCRIBED 1/4 S8 BT.

⑤ 1/4 COR. SEC'S. 8E 17, FOUND: A 3" DIAM. U.S.D.I., B.L.M. ALUM. CAP SET 9" ABOVE GROUND IN A 2" DIAM. ALUM. PIPE AND STAMPED PER SKETCH, FROM WHICH CAP BEARS A 36" D.B.H. HEMLOCK, N.72°E., (67 LKS.), 43.7', SCRIBED 1/4 S8 BT, AN 18" D.B.H. HEMLOCK, S.20°E., (55 1/2 LKS.), 35.52', SCRIBED 1/4 S17 BT, AND A 30" D.B.H. SPRUCE, S.12°W, 42.0', WITH A HEALED FACE, 5 BLAZES AROUND TREE, AND AN INTERNATIONAL PAPER CO. ALUM. SEC. TAG.

⑥ CE 1/16 COR., S.19, FOUND: A 3" DIAM. U.S.D.I., B.L.M. ALUM. CAP SET 13" ABOVE GROUND ON A 5/8" ROD SET IN CONCRETE AND CAP STAMPED PER SKETCH, FROM WHICH BEARS A 14" D.B.H. LODGEPOLE PINE, N.12 1/2°E., (76 1/2 LKS.), 50.5', SCRIBED CE 1/16 S19 BT, AND A 12" D.B.H. LODGEPOLE PINE, N. 69 1/2°W, (S. 69 1/2°W), 60.0', (90 1/2 LKS.) SCRIBED CE 1/16 S19 BT.

⑦ C 1/4 COR. S.19, FOUND: 3" DIAM. U.S.D.I., B.L.M. ALUM. CAP SET 4" ABOVE GROUND IN A 2" DIAM. ALUM. PIPE AND STAMPED PER SKETCH, FROM WHICH BEARS A STEEL FENCE POST, NORTH, 0.7', AN 18" D.B.H. LODGEPOLE PINE, N.36°E., (36 LKS.), 23.4', SCRIBED C 1/4 S19 BT, AND BLAZED (OLD) ON 4 SIDES, AND A 32" D.B.H. SPRUCE, S.26 1/2°W., (66 1/2 LKS.) 43.8', SCRIBED C 1/4 S19 BT.

⑧ CS 1/16 COR., S.19, FOUND: 3" DIAM. U.S.D.I., B.L.M. ALUM. CAP SET 6" ABOVE GROUND IN A 2" DIAM. ALUM. PIPE AND STAMPED PER SKETCH, FROM WHICH BEARS AN 8" D.B.H. LODGEPOLE PINE, S.62 1/2°E., (18 LKS.) 12.1', SCRIBED CS 1/16 S19 BT, AND A 12" D.B.H. LODGEPOLE PINE, N.84 1/2°W., (13 LKS.) 8.7', SCRIBED CS 1/16 S19 BT.

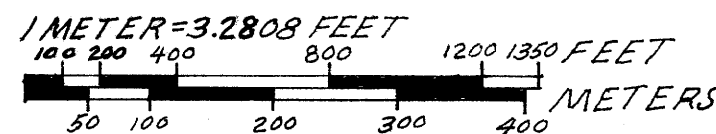
⑨ SPECIAL MEANDER CORNER, FOUND, A 2" X 2" HUB SET 15.15' SOUTH OF A 3" DIAM. U.S.D.I., B.L.M. ALUM. CAP SET 12" ABOVE GROUND ON A 5/8" IRON ROD SET IN CONCRETE. NO BT'S. STEEL FENCE POST, 0.6' NORTH OF CAP. CAP STAMPED PER SKETCH

BASIS OF BEARINGS: IN SECTION 19, THE BEARINGS ARE BASED ON THE NORTH LINE OF NW 1/4 SE 1/4, S.19, PER B.L.M. CALLS. IN SECTIONS 5E 8 THE BEARINGS ARE BASED ON A USFS GYRO BEARING.

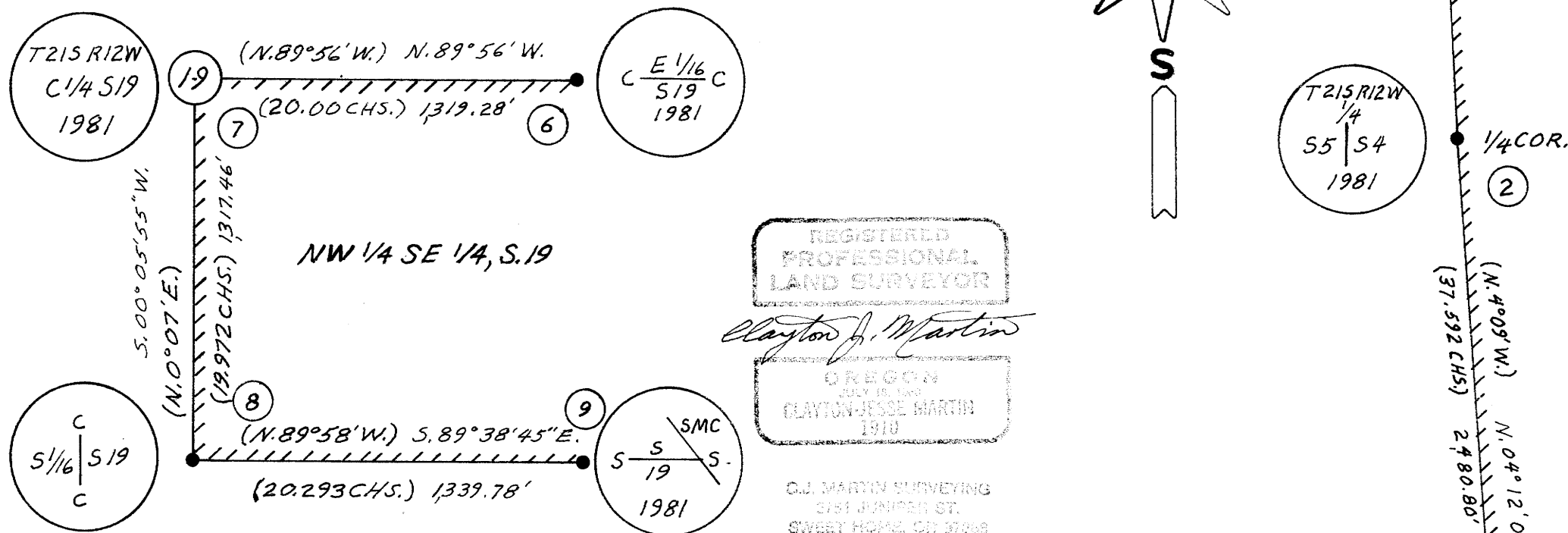
NOTE: ALL BEARING TREES HAVE BEARING TREE TAGS, ATTENTION SIGNS AND RED BANDS PAINTED AROUND THEM.

NARRATION: THE CORNERS ON THIS SURVEY WERE SET IN 1981 BY THE U.S.B.L.M., THE PLAT OF WHICH SURVEY IS NOT YET OFFICIAL, THIS SURVEY WAS MADE TO POST THE LINE BETWEEN THE U.S. FOREST SERVICE AND PRIVATE LAND.

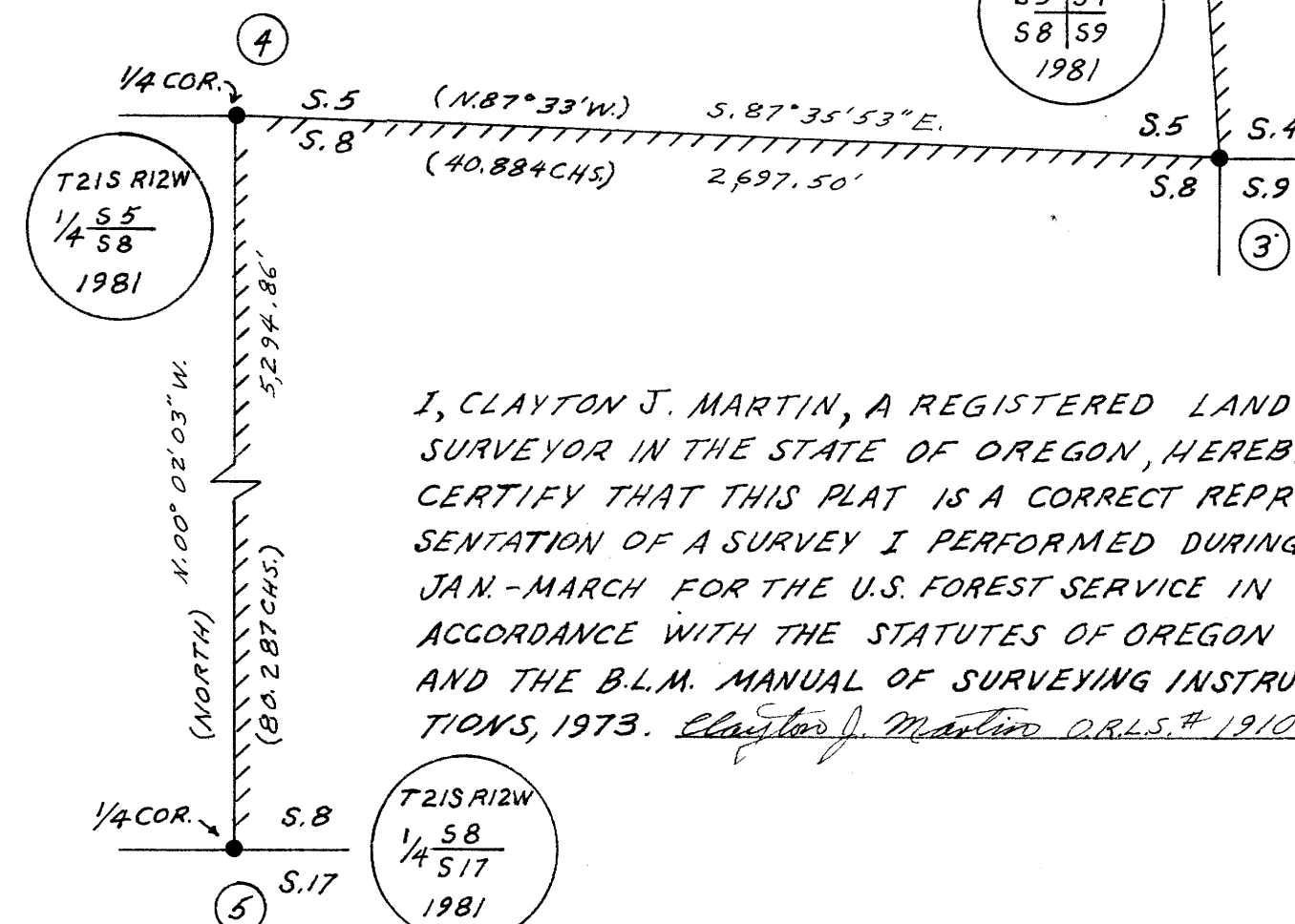
SURVEY FOR U.S. FOREST SERVICE
SIUSLAW NATIONAL FOREST
CONTRACT No RFQ #82-4 PO #00-04TD-2-255
E. LINE S.5, E 1/2 S. LINE S.5, N-S CENTERLINE S.8, NW 1/4 SE 1/4 S.19, T.21S, R.12W, WM.
DOUGLAS COUNTY, OREGON
SCALE 1" = 500' JAN.-MAR. 1982
SURVEYOR - CLAYTON J. MARTIN RPLS # 1910
CHAINMAN - JOEL J. MARTIN
MONUMENT FOUND
NO MONUMENTS SET



LLLLL POSTED BOUNDARY
B.L.M. CALLS ()



U.S.D.I. = UNITED STATES DEPARTMENT OF THE INTERIOR
B.L.M. = BUREAU OF LAND MANAGEMENT
COR. = CORNER
D.B.H. = DIAMETER BREAST HEIGHT
DIAM. = DIAMETER
ALUM. = ALUMINUM
LKS. = LINKS
CHS. = CHAINS
B.T. = BEARING TREE



I, CLAYTON J. MARTIN, A REGISTERED LAND SURVEYOR IN THE STATE OF OREGON, HEREBY CERTIFY THAT THIS PLAT IS A CORRECT REPRESENTATION OF A SURVEY I PERFORMED DURING JAN.-MARCH FOR THE U.S. FOREST SERVICE IN ACCORDANCE WITH THE STATUTES OF OREGON AND THE B.L.M. MANUAL OF SURVEYING INSTRUCTIONS, 1973. Clayton J. Martin RPLS # 1910

COUNTY SURVEYORS FILE DO NOT REMOVE FROM SET