

# SURVEY SECTION 27, TOWNSHIP 20 SOUTH, RANGE 11 WEST W.M. DOUGLAS COUNTY, OREGON

**SURVEY BY:**

**STUNTZNER ENGINEERING & FORESTRY**  
 P.O. BOX 118...705 SO. 4TH...COOS BAY...OREGON 97420  
 PH 503 267 2872

**COUNTY SURVEYORS FILE DATA**

**DO NOT REMOVE FROM OFFICE**

**REGISTERED PROFESSIONAL LAND SURVEYOR**

*Ronald E. Stuntzner*  
**RONALD E. STUNTZNER**  
 1342

**SURVEY FOR:**

**SIUSLAW NATIONAL FOREST**  
 PO BOX 1148  
 CORVALLIS OREGON 97330  
 CONTRACT NO. 53-04 TO-1-0497N  
**JOHNSLICK CADASTRAL SURVEY**  
**CORNER NOTES**

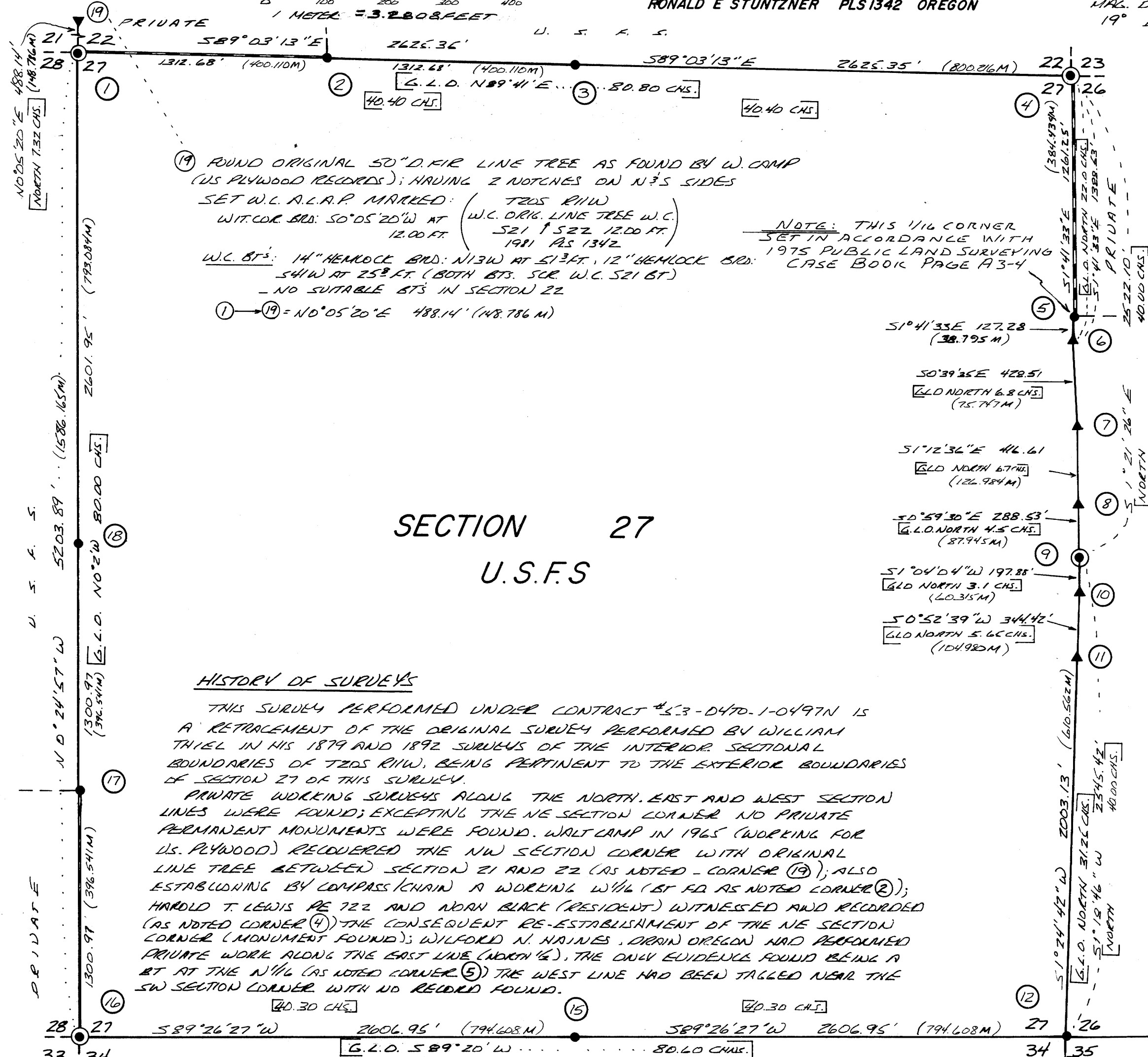
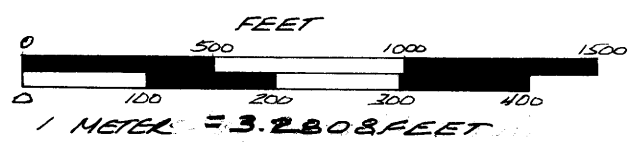
FILED *bs*  
 RECEIVED *rk*  
 MAR 31 1982  
 COUNTY SURVEYOR  
 DOUGLAS COUNTY, ORE.  
*bs*

**CERTIFICATION** I HEREBY CERTIFY THAT THE PLAT AND NOTES HEREON ARE A CORRECT REPRESENTATION OF THE SURVEY PERFORMED IN JULY-NOV, INCLUSIVE 1981 AND IS IN ACCORDANCE WITH OUR U.S. F.S. CONTRACT, THE 1973 B.L.M. MANUAL OF SURVEYING AND THE STATUTES OF THE STATE OF OREGON

*Ronald E. Stuntzner*  
**RONALD E. STUNTZNER PLS 1342 OREGON**

**DATE: OCT.-NOV. 1981**

**SCALE: 1" = 500'**



**SECTION 27**  
**U.S.F.S**

**HISTORY OF SURVEYS**

THIS SURVEY PERFORMED UNDER CONTRACT #53-0470-1-0497N IS A RETRACEMENT OF THE ORIGINAL SURVEY PERFORMED BY WILLIAM THIEL IN HIS 1879 AND 1892 SURVEYS OF THE INTERIOR SECTIONAL BOUNDARIES OF T20S R11W, BEING PERTINENT TO THE EXTERIOR BOUNDARIES OF SECTION 27 OF THIS SURVEY.

PRIVATE WORKING SURVEYS ALONG THE NORTH, EAST AND WEST SECTION LINES WERE FOUND; EXCEPTING THE NE SECTION CORNER NO PRIVATE PERMANENT MONUMENTS WERE FOUND. WILFORD (WORKING FOR U.S. PLYWOOD) RECOVERED THE NW SECTION CORNER WITH ORIGINAL LINE TREE BETWEEN SECTION 21 AND 22 (AS NOTED - CORNER 19); ALSO ESTABLISHING BY COMPASS CHAIN A WORKING W 1/4 (BT FD AS NOTED CORNER 2); HAROLD T. LEWIS RE 722 AND NOAN BLACK (RESIDENT) WITNESSED AND RECORDED (AS NOTED CORNER 4) THE CONSEQUENT RE-ESTABLISHMENT OF THE NE SECTION CORNER (MONUMENT FOUND); WILFORD N. HAINES, DEERIN OREGON HAD RECOVERED PRIVATE WORK ALONG THE EAST LINE (NORTH 1/4); THE ONLY EVIDENCE FOUND BEING A BT AT THE N 1/4 (AS NOTED CORNER 5) THE WEST LINE HAD BEEN TAGGED NEAR THE SW SECTION CORNER WITH NO RECORD FOUND.

**LEGEND**

- MONUMENTS FOUND (SEE CORNER NOTES)
  - MONUMENTS SET A.C.A.P. = 3" ALUM. CAP WITH 2 1/2 x 30" ALUMINUM PIPE & 3" PIPES AS NOTED
  - LINE POSTED AT 200' SPACING W/ 1/2" ALUM. CAP POST & 3" DEER SIGN (U.S.F.S. BOK)
  - BASIS OF BEARING = SOLAR OBSERVATION
  - G.L.O. BEG. - DIST. = ORIGINAL GOVT. MEASURE
- NOTE: ALL BT'S MEASURED TO SIDE E OF TREE W/ BT TRIGS, RED PRINT & SIGNS AS PER CONTRACT

**NARRATIVE:** THE PURPOSE OF THIS SURVEY PERFORMED IN ACCORDANCE WITH OUR U.S.F.S. CONTRACT WAS TO RECOVER OR ESTABLISH THE PRIMARY CONTROLLING CORNERS (1/4 SECTION & 1/4 CORNERS) OF SECTION 27 T20S R11W. ALSO 1/4 TH. CORNERS WERE ESTABLISHED AT OWNERSHIP CORNERS AND PROPERTY BOUNDARIES MARKED ALONG THOSE LINES DIFFERENTIATING PUBLIC AND PRIVATE LANDS. AS SHOWN (---) THE CONTROL TRAVERSES WERE ALL CLOSED LOOPS HAVING CLOSURE ACCURACIES ABOVE 1:8500 THE EQUIPMENT USED: JENA 1 MIN. THEODOLITE, NAC 1E E.O.M., 300' ENGINEERS CHAIN, AND ALL COMPUTATIONS WERE PERFORMED ON A MONDEE 1880 MINI COMPUTER. ASSISTING PERSONNEL WERE: TOM HOSHALL, JERRY ICE, CLAUDE MULLINS

- 1 FOUND ORIGINAL CORNER TREES, ROTTED REMAINS OF SMALL D. FIRE, FROM WHICH DRILL SET A.C.A.P. MARKED: T20S R11W (S21.22.28.27 1981 PLS 1342) BT'S BEAR: 34" D. FIRE SNAG N70E (RECLNS) @ 16.5 FT. (OLD CHOPPINGS CUT TO FLUSH STUMP) POSSIBLE SE BT: 22" UNROOTED CEDAR SNAG NOW BRS: 526 E @ 25.5 (RECL. S68 E @ 20.5) 24" HEMLOCK ROTTED REMAINS, BRS 545 W @ 18.7 (RECORD DRG. 553 W @ 15.3) POSSIBLE NW BT: 40-48" HEMLOCK ROTTED REMAINS, BRS: N56 W @ 13.5 FT. (RECL. N53 W @ 9.5 FT.)
- 2 SET A.C.A.P. AT W 1/4 CORNER, MARKED: T20S R11W (W 1/4 S22.1527 W 1/4 1981 PLS 1342) FROM WHICH: 8" HEMLOCK BRS: N11 W @ 6.3 FT. (W 1/4 S22.1527 BT) 5" HEMLOCK BRS: S25 E @ 35.3 (X 3 BT)
- 3 SET A.C.A.P. AT PROPORTIONED N 1/4, MARKED: T20S R11W (N 1/4 S22.1527 1981 PLS 1342) FROM WHICH: 8" D. FIRE BRS: N51 E @ 33.9 (NO ORIGINAL EVIDENCE FOUND - CORNER AS PROPORTIONED FALLS ON SOUTH EDGE OF SEC.) 10" ALDER BRS: S72 W @ 24.0 (BARK SEC. T20S R11W S27 N 1/4 BT)
- 4 FOUND ORIGINAL CORNER POSITION AS PER AFFIDAVIT RECORDED IN VOL. 318 P. 783 DOUGLAS CO. RECORDS. FOUND STEEL CAP (3") AND 3/4" PIPE IN CONCRETE, MARKED: (S22.1527 1981 PLS 1342) NOTE: AFFIDAVIT ALSO HLED 50" D. FIRE SNAG BRS: S75 E @ 25.4 (RECL. T20S R11W S27 N 1/4 BT) DIST TO 76.6 (S27.1527) IN E.S. # 58-260
- 5 FOUND ORIGINAL LINE TREE SET 1 1/2" I.P.A.P.E. W/ 2 1/2" B.C.A.P. AS WIT. COR. (T20S R11W) FROM WHICH: 4" D. FIRE BRS: N51 E @ 27.5 FT. SET A.C.A.P. AT N 1/4, MARKED: T20S R11W (N 1/4 S27.1526 1981 PLS 1342) 4" D. FIRE BRS: S76 W @ 11.8 FT. 577 E @ 10.5 FT. (BARK SCUBED N 1/4 SEC. T20S R11W) (BOTH BT'S MARKED X @ B.H. & SCR. BT @ FACE)
- 6 FOUND ORIGINAL LINE TREE SET 1 1/2" I.P.A.P.E. W/ 2 1/2" B.C.A.P. AS WIT. COR. (T20S R11W) FROM WHICH: 4" D. FIRE BRS: N51 E @ 27.5 FT. DRILL BT'S: 14" D. FIRE (NOW 78" STUMP) W/ ROTTED OPEN FACE, OLD CHIPPING VISIBLE BRS: N71 E @ 9.3 FT. 18" CEDAR (NOW 48" STUMP) W/ HEALED FACE BRS: N16 W @ 31.3 (RECL. S27 BT - T20S R11W E 1/4)
- 7 FOUND ORIGINAL LINE TREE SET 1 1/2" I.P.A.P.E. W/ 2 1/2" B.C.A.P. AS WIT. COR. (T20S R11W) FROM WHICH: 4" D. FIRE BRS: N51 E @ 27.5 FT. DRILL BT'S: 14" D. FIRE (NOW 78" STUMP) W/ ROTTED OPEN FACE, OLD CHIPPING VISIBLE BRS: N71 E @ 9.3 FT. 18" CEDAR (NOW 48" STUMP) W/ HEALED FACE BRS: N16 W @ 31.3 (RECL. S27 BT - T20S R11W E 1/4)
- 8 FOUND ORIGINAL LINE TREE SET W.C. A.C.A.P. MARKED: T20S R11W (W.C. S27.1526 1981 PLS 1342) TREE 720 FT. W.C. BRS: 5" D. FIRE BRS: N56 E @ 13.4 FT. (SCR. S26 W.C. BT) W.C. BRS: N45 W @ 14.3 FT. (MKT. X @ B.H. & SCR. BT @ FACE)
- 9 FOUND ORIGINAL LINE TREE SET W.C. A.C.A.P. MARKED: T20S R11W (W.C. S27.1526 1981 PLS 1342) TREE 720 FT. W.C. BRS: 5" D. FIRE BRS: N56 E @ 13.4 FT. (SCR. S26 W.C. BT) W.C. BRS: N45 W @ 14.3 FT. (MKT. X @ B.H. & SCR. BT @ FACE)
- 10 FOUND ORIGINAL LINE TREE SET W.C. A.C.A.P. MARKED: T20S R11W (W.C. S27.1526 1981 PLS 1342) TREE 720 FT. W.C. BRS: 5" D. FIRE BRS: N56 E @ 13.4 FT. (SCR. S26 W.C. BT) W.C. BRS: N45 W @ 14.3 FT. (MKT. X @ B.H. & SCR. BT @ FACE)
- 11 FOUND ORIGINAL LINE TREE SET W.C. A.C.A.P. MARKED: T20S R11W (W.C. S27.1526 1981 PLS 1342) TREE 720 FT. W.C. BRS: 5" D. FIRE BRS: N56 E @ 13.4 FT. (SCR. S26 W.C. BT) W.C. BRS: N45 W @ 14.3 FT. (MKT. X @ B.H. & SCR. BT @ FACE)
- 12 SET A.C.A.P. AT DOUBLE PROPORTIONED SEC. CORNER, MARKED: T20S R11W (S27.1526.534.535 1981 PLS 1342) (DRILL CALLS CHECKED HOWEVER NO ORIG. EVIDENCE FOUND) 24" ALDER (BARK CONDITION) BRS: S75 E @ 34.5 (BARK SEC. T20S R11W S27 BT) 34" D. FIRE (NOW 78" STUMP) @ 59.8 (BARK SEC. T20S R11W S27 BT) 40" D. FIRE BRS: N44 W @ 29.0 (SCR. T20S R11W S27 BT) (50" D. FIRE REMAINS (RECL. OLD SNAG) BRS: S76 E @ 8.2 (NOT TAGGED)
- 13 FOUND ORIGINAL CORNER AS ESTABLISHED BY CLAUDE KEEB IN 1953 (S.E.B. C.S. MAP # 41/119) AND IN 1969 (RECORDS) BY DOUGLAS COUNTY SURVEYOR. FOUND 2" I.P.A.P.E. W/ 2 1/2" B.C.A.P. W/ 2" I.P.A.P.E. ALONGSIDE; B.C.A.P. MARKED: (COUNTY SURVEYOR OFFICE) T20S R11W 1969 BT'S FOUND: 14" MAPLE BRS: N69 E @ 76.6 FT. (TAGGED W/ HEALED FACE) 8" (NOW 10") MAPLE BRS: S38 W @ 96.6 (TAGGED W/ HEALED FACE)
- 14 FOUND PROPORTIONED CORNER AS ESTABLISHED BY R.A. STARNER'S 1981 SURVEY MAP # RN 3-18 NO ORIGINAL EVIDENCE FOUND; FOUND 2" I.P.A.P.E. W/ 2 1/2" B.C.A.P. MARKED: T20S R11W (S27.1526.534.535 1981 PLS 1342) STARNER 1981 BT'S: 28" W. CEDAR BRS: N89 E @ 146.0 FT. (SCR. T20S R11W S35 BT) (S34.535.535.52 1981 PLS 1342) 28" STAPLE BRS: S41 E @ 136.6 (SCR. T20S R11W S2 BT) 14" ALDER BRS: S26 W @ 165.0 (RECL. S20 W) @ 27.4 (BARK SEC. T20S R11W S3 BT) 20" ALDER BRS: N63 W @ 85.3 (BARK SEC. T20S R11W S34 BT)
- 15 SET ALUM. CAP ROCE MONUMENT AT S 1/4 (MID POINT), MARKED: T20S R11W (S 1/4 S27.1526 1981 PLS 1342) (RECL. 24" D. FIRE W/ 32" SCHEDULED SPAN BRS: S58 E @ 78.3 (NOT TAGGED) 26" MAPLE BRS: N71 W @ 99.3 (SCR. S 1/4 S27 BT)
- 16 FOUND ORIGINAL NE BT; REESTABLISHED DRILL CORNER POSITION SET A.C.A.P. MARKED: T20S R11W (S 1/4 S27.1526 1981 PLS 1342) FROM WHICH: DRILL BT BRS: 16" (NOW 31") ALDER N56 E @ 45.0 (VISIBLE PARTIAL BARK SCUBES) 1981 BT'S: 14" D. FIRE BRS: S67 E @ 84.3 (SCR. T20S R11W S34 BT) 53" W. CEDAR BRS: S53 W @ 78.5 (SCR. T20S R11W S33 BT) 18" ALDER BRS: N46 W @ 43.3 FT. (BARK SEC. T20S R11W S28 BT) NOTE: CORNER POSITION FALLS ON ALDER PLAT AS DRILL CALLS TO N.E. & W. CHECKED, W/ OLD BLAZES
- 17 SET A.C.A.P. AT S 1/4 (MID POINT), MARKED: T20S R11W (S 1/4 S27.1526 1981 PLS 1342) FROM WHICH: 40" W. CEDAR BRS: S33 W @ 19.4 FT. (SCR. S 1/4 S28 BT) BT HAS OLD BLAZING ON EAST SIDE 24" HEMLOCK BRS: S72 E @ 37.0 FT. (SCR. S 1/4 S27 BT)
- 18 SET A.C.A.P. AT W 1/4 (MID POINT), MARKED: T20S R11W (W 1/4 S27.1526 1981 PLS 1342) FROM WHICH: 40" W. CEDAR BRS: S33 W @ 19.4 FT. (SCR. S 1/4 S28 BT) BT HAS OLD BLAZING ON EAST SIDE 24" HEMLOCK BRS: S72 E @ 37.0 FT. (SCR. S 1/4 S27 BT)
- 19 SET A.C.A.P. AT W 1/4 (MID POINT), MARKED: T20S R11W (W 1/4 S27.1526 1981 PLS 1342) FROM WHICH: 40" W. CEDAR BRS: S33 W @ 19.4 FT. (SCR. S 1/4 S28 BT) BT HAS OLD BLAZING ON EAST SIDE 24" HEMLOCK BRS: S72 E @ 37.0 FT. (SCR. S 1/4 S27 BT)

MAP FILE 27-55

MAP FILE 27-55