

**SUBDIVISION SECTION 34, T.20S., R.11W
JOHNSLICK CADASTRAL SURVEY
SHEET 2 OF 2**

CORNER NOTES

NOTE: ALL BTS WERE MEASURED TO THE SIDE CENTER OF TREE AT THE BASE (STUMP HEIGHT), WITH BT TAGS, ATTN. SIGNS AND RED PAINT AS PER THIS CONTRACT. FOR ADDITIONAL CORNER DETAILS (ACCESS AND TOPOG.) SEE U.S.F.S. FORM #7100-52. ALL R.C.A.P. MONUMENTS SET WERE 2"x3" RUM. PIPE W/ 3" RUM. CAP

① 28/27; FOUND ORIGINAL NE BT. RE-ESTABLISHED ORIGINAL CORNER POSITION. SET A.C.A.P. MARKED:
FROM WHICH: ORIGINAL BT BLD: 16" (NOW 51") ALDER NSDE @ 43 1/2 FT. (VISIBLE PARTIAL BARK SCRIBES)
1981 BTs: 14" D.FIR BLD: 567E @ 84 1/2 FT. (SCR. T20S R11W 534 BT)
53" W.R. CEDAR BLD: 553W @ 78 1/2 FT. (SCR. T20S R11W 533 BT)
18" ALDER BLD: N46W @ 43 1/2 FT. (BARK SCR. T20S R11W 528 BT)
NOTE: CORNER POSITION FALLS ON ALDER FURT AS ORIGINALLY CALLED, CALLED TO N.S.E. AND WEST CHECKED, W/OLD BURSES.

② 527 1/4; SET RUM. CAP ROCK MONUMENT AT PROPORTIONED MID-PT. 534 (NO EVIDENCE OF ORIGINAL CORNER FOUND) A.C.A.P. MARKED:
1981 BTs: 34" W.R. CEDAR BLD: 564E @ 80 1/2 FT. (SCR. N1/4 S34 BT)
(RUSD 54" D.FIR W/32" SCHOOLEDMARKED STEM BLD. 568E @ 78 1/2 FT.)
26" MAPLE BLD: N7W @ 99 1/2 FT. (SCR. S1/4 527 BT)
③ 27/26; SET A.C.A.P. AT DOUBLE PROPORTIONED SECTION CORNER, MARKED:
(ORIG. CALLS CHECKED NOWHERE NO DRILL EVIDENCE FOUND)
1981 BTs: 24" D.FIR BLD: N54E @ 44 1/2 FT. (SCR. T20S R11W 526 BT)
20" ALDER (POOR CONDITION) BLD: 51E @ 34 1/2 FT. (BARK SCR. T20S R11W 535 BT)
34" D.FIR BLD: 570W @ 59 1/2 FT. (SCR. T20S R11W 534 BT)
40" D.FIR BLD: N44W @ 29 1/2 FT. (SCR. T20S R11W 527 BT)
50" D.FIR REMAINS (VERY OLD SNAG) BLD: 516E @ 88 1/2 FT. - NOT TAGGED

④ FOUND ORIGINAL GOVERNMENT LINE TREE; ORIG. 42" D.FIR (NOW 78" STUMP) SET WITNESS CORNER A.C.A.P., WHICH BLD: N10°22'39"E @ 17.68 FT. MARKED:
1981 W.C. BTs: 6" ALDER BLD: 560E @ 17 1/2 FT.; 8" ALDER BLD: N71W @ 16 1/2 FT. (BOTH BTs BARK SCR. T20S R11W 526, 527 W.C. BT)
(DRILL STUMP TAGGED & PRINTED RED W/ ATTN. SIGN POSTED)
⑤ 526 1/4; FOUND ORIGINAL CORNER AS PERPETUATED BY CLAUDE KERE IN 1963 (SEE C.S. MAP #41119) AND IN 1969 REMONUMENTED BY DOUGLAS COUNTY SURVEYOR. FOUND 2" I.P. PIPE W/ 2 1/2" BRASS CAP (2" I.P. PIPE ALONGSIDE ALSO) MARKED:
1963 BTs FOUND: 14" MAPLE BLD: N69E @ 76 1/2 FT. (TAGGED W/ HEALED FACE)
8" (NOW 10") MAPLE BLD: 538W @ 96 1/2 FT. (TAGGED W/ HEALED FACE)
NO COUNTY BTs OF RECORD

⑥ N1/6 34/35; SET RUM. CAP ROCK MONUMENT AT N1/6, MARKED:
1981 BTs: 66" D.FIR BLD: N18E @ 57 1/2 FT. (SCR. N1/6 S35 BT)
12" D.FIR BLD: 52EW @ 21 1/2 FT. (SCR. N1/6 S34 BT)

⑦ 34/35; SET A.C.A.P. AT PROPORTIONED POSITION, CAP MARKED:
(NO EVIDENCE OF ORIGINAL CORNER FOUND)
1981 BTs: 22" D.FIR BLD: N6E @ 33 1/2 FT. (SCR. W1/4 S35 BT)
22" D.FIR BLD: 51E @ 21 1/2 FT. (SCR. W1/4 S35 BT)
23" D.FIR BLD: N35W @ 19 1/2 FT. (SCR. E1/4 S34 BT)

⑧ W.C.M.C. SET A.C.A.P. AS WITNESS CORNER TO MEANDER CORNER, MARKED:
(PROPORTIONED ORIG. M.C. LOCATION FALLS IN SMITH RIVER, 50° BTs @ 1993 FT.)
1982 BTs: 32" D.FIR BLD: N48E @ 25 1/2 FT. (SCR. W.C. 535 BT)
12" D.FIR BLD: N30W @ 39 1/2 FT. (SCR. W.C. 534 BT)

**SMITH RIVER GRANGE #585 MONUMENTATION NOTES
SEE GRANGE SURVEY DETAIL**

⑨ SET R.C.A.P. AT POINT ON NORTHEAST LINE GRANGE #585 AND INTERSECTION WITH SECTION LINE BETWEEN S34 AND S35, MARKED:
1982 BT: 10" CEDAR BLD: N14E @ 15 1/2 FT. (SCR. AP1 BT)

⑩ SET A.C.A.P. AT NW CORNER OF GRANGE #585, MARKED:
1982 BT: 18" D.FIR BLD: N18W @ 30.5 FT. (SCR. AP4 BT)

⑪ SET 3" RUM. ROCK MONUMENT AT SW CORNER OF GRANGE #585, MARKED:
1982 BT: 14" ALDER BLD: 526E @ 35 1/2 FT. (SCR. AP3 BT)

⑫ SET A.C.A.P. AT SE CORNER OF GRANGE #585, MARKED:
1982 BT: 24" D.FIR BLD: N25W @ 28 1/2 FT. (SCR. AP2 BT)

⑬ FOUND PROPORTIONED CORNER AS ESTABLISHED BY B.A. SHAWER'S 1981 SURVEY, MAP #PM 3-48. FOUND 2" I.P. PIPE W/ 2 1/2" BRASS CAP, MARKED: (NO DRILL EVIDENCE FOUND)
SHAWER'S 1981 BTs FOUND: 28" W.R. CEDAR BLD: N89 1/2 E @ 14 1/2 FT. (SCR. T20S R11W 534 BT)
28" SPRUCE BLD: 541E @ 13 1/2 FT. (SCR. T21S R11W 52 BT)
14" ALDER BLD: 566W (REC. 570W) @ 27 1/2 FT. (BARK SCR. T21S R11W 53 BT)
20" ALDER BLD: N63W (REC. N59W) @ 85 1/2 FT. (BARK SCR. T20S R11W 534 BT)

⑭ 35 1/4; FOUND ORIGINAL CORNER AS REMONUMENTED BY B.A. SHAWER IN 1981. AD. 2" I.P. PIPE W/ 2 1/2" B. CAP MARKED:
FROM WHICH: 34" I.P. PIPE BLD: SOUTH @ 0 1/2 FT.
ORIGINAL BT FOUND: 60" W.R. CEDAR BLD: 54W (REC. 510W) @ 10 1/2 FT. (OPEN FACE W/ VISIBLE SCRIBES)
GODFREY'S 1964 BT FOUND: 24" W.R. CEDAR BLD: NSBE @ 34 1/2 FT. (HEALED FACE W/ PARTIAL VISIBLE SCRIBES)

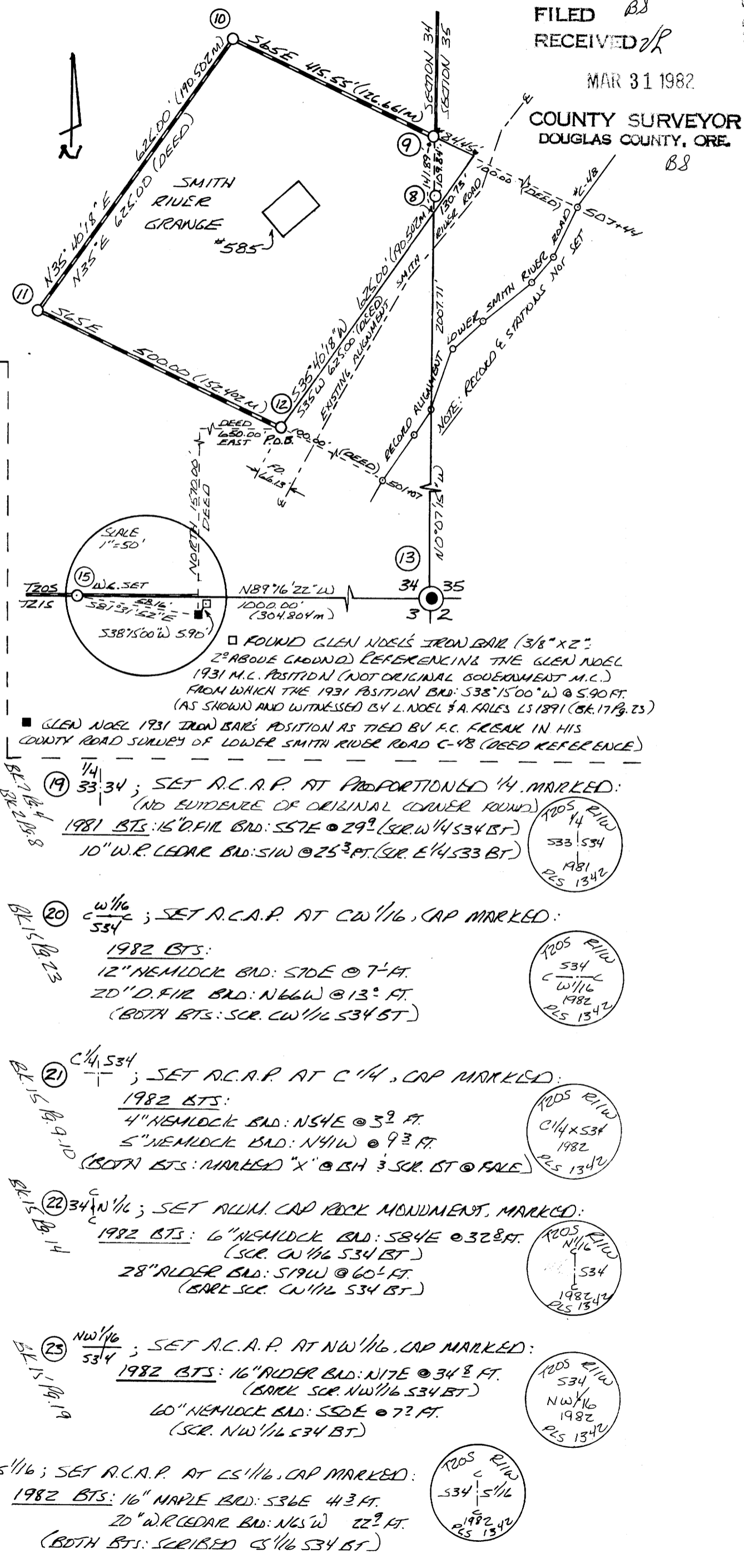
⑮ SET A.C.A.P. AS WITNESS CORNER TO MEANDER CORNER, MKD:
(PROPORTIONED ORIG. M.C. LOCATION FALLS IN SMITH RIVER, 58° BTs @ 794 FT.)
1982 BTs: 8" W.R. CEDAR BLD: 587W @ 85 1/2 FT. (SCR. W.C. 53 BT)
1982 B.O.s: DOUGLAS COUNTY SURVEYOR'S BRASS CAP STATION "5-7" BLD: N8°22'07"E @ 238.49'
POWER POLE #10-110 BLD: 59W @ 106 1/2 FT. (BT TAG ONLY)
NOEL RANCH BOAT RAMP SIGN W/ ROCK BASE BLD: N2E @ 159 1/2 FT.
NOTE: ALSO SEE REFERENCE TO GLEN NOEL PRIVATE M.C. IN DETAIL OF GRANGE #585 SURVEY (SEE DETAIL)

⑯ 534 1/4; FOUND PROPORTIONED CORNER AS ESTABLISHED BY B.A. SHAWER'S 1981 SURVEY, MAP #PM 3-48. FOUND 2" I.P. PIPE W/ 2 1/2" BRASS CAP, MARKED:
(NO ORIGINAL CORNER EVIDENCE FOUND)
SHAWER'S 1981 BTs FOUND:
14" SPRUCE BLD: 543W @ 10 1/2 FT. (SCR. 1/4 S3 BT)
72" W.R. CEDAR N79W @ 72 1/2 FT. (SCR. 1/4 S34 BT)

⑰ 33 1/4; FOUND ORIGINAL CORNER, COUNTY SURVEYOR B.O.P. 1" I.P. PIPE W/ 2 1/2" BRASS CAP MARKED:
ORIGINAL BTs FD: 48" D.FIR (LIVE) BLD: 555W @ 21 1/2 FT. (VISIBLE SCR. "B" IN HEALED FACE)
64" UPDOTTED D.FIR BLD: N55W @ 28 1/2 FT. (VISIBLE STAMP ONLY)
48" D.FIR (STUMP) BLD: 525E @ 13 1/2 FT. (OLD CHIPPING IN OLD FACE)
1964 COUNTY BTs FOUND: 34" D.FIR (SNAG) BLD: N17W @ 50 1/2 FT. (HEALED FACE)
12" HEMLOCK BLD: N1E @ 29 1/2 FT. (PARTIAL SCR. IN HEALED FACE)
18" HEMLOCK BLD: 558E @ 27 1/2 FT. (HEALED FACE)
NOTE: NO SUITABLE BTs AVAILABLE IN NW QUADRANT

⑱ 51/6 33/34; SET A.C.A.P. AT S1/6, CAP MARKED:
1982 BTs: 16" D.FIR BLD: 572E @ 51 1/2 FT. (SCR. S1/6 S34 BT)
8" HEMLOCK BLD: 54W @ 42 1/2 FT. (SCR. S1/6 S33 BT)

**SMITH RIVER GRANGE #585 SURVEY DETAIL
SURVEY PERFORMED AS PER DEED REF. #98-269, COUNTY RECORDS (SURVEY DATA FIELD BK. 17) SCALE 1" = 200'**



FILED B8
RECEIVED
MAR 31 1982
COUNTY SURVEYOR
DOUGLAS COUNTY, ORE.
B8