

# SUBDIVISION SECTION 34, TOWNSHIP 20 SOUTH, RANGE 11 WEST W.M., DOUGLAS COUNTY, OREGON

**SURVEY BY**  
**STUNTZNER ENGINEERING & FORESTRY**  
 PO BOX 118 ... 705 SO. 4TH ... COOS BAY OREGON  
 PH 503 267 2872  
**97420**

COUNTY SURVEYORS FILE DATA  
 DO NOT REMOVE FROM OFFICE

**SURVEY FOR:** SIUSLAW NATIONAL FOREST  
 P.O. BOX 1148  
 CORVALLIS OREGON 97330  
 CONTRACT NO. 53-04 TO-1-0497N  
 JOHNSLICK CADASTRAL SURVEY  
**SHEET 1 OF 2**

FILED 68  
 RECEIVED 7/8  
 MAR 31 1982  
 COUNTY SURVEYOR  
 DOUGLAS COUNTY, ORE.  
 62

**CERTIFICATION** I HEREBY CERTIFY THAT THE PLAT AND NOTES HEREON ARE A CORRECT REPRESENTATION OF THE SURVEY PERFORMED IN JUL-DEC, INCLUSIVE, 1981 AND JAN-FEB, INCLUSIVE, 1982 AND IS IN ACCORDANCE WITH OUR U.S.F.S. CONTRACT, THE 1973 BLM MANUAL OF SURVEYING AND THE STATUTES OF THE STATE OF OREGON

*Ronald E. Stuntzner*  
 RONALD E. STUNTZNER PLS 1342 OREGON

DATE: FEB. 15, 1982

SCALE: 1" = 500'  
 SHEET 1 OF 2

REGISTERED  
 PROFESSIONAL  
 LAND SURVEYOR

*Ronald E. Stuntzner*  
 OREGON  
 SEPTEMBER 23, 1977  
 RONALD E. STUNTZNER  
 1342

MAG. DEC. 19° E.

**NARRATIVE**

THE PURPOSE OF THIS SURVEY PERFORMED IN ACCORDANCE WITH OUR U.S.F.S. CONTRACT WAS TO RECOVER OR ESTABLISH THE PRIMARY CONTROLLING CORNERS (1/4 SECTION AND 1/4 CORNER) OF SECTION 34 T20S R11W. INTERIOR 1/16 CORNERS WERE ESTABLISHED AT OWNERSHIP CORNERS AND PROPERTY BOUNDARIES MARKED ALONG THOSE LINES DIFFERENTIATING PUBLIC AND PRIVATE LANDS, SHOWN THIS (---); AN ADDITIONAL SURVEY OF THE SMITH RIVER GRANGE #585 WAS PERFORMED, WITH DEED AND SURVEY MAP OF THE LOWER SMITH RIVER ROAD #C-48 CONTROLLING ITS MONUMENTATION (SEE DETAIL ON SHEET 2 OF 2)

THE MONUMENTATION CONTROL TRAVELESSES WERE ALL CLOSED LOOPS HAVING CLOSURE ACCURACIES ABOVE 1:6000 FT. POSTED BOUNDARY CONTROL INCLUDED RADIAL TRAVELESSES AS NEEDED.

THE EQUIPMENT USED: WILD T-11 AND TEWA 1 MIN. THEODOLITES, DI4 WILD AND MARIE E.D.M.'S, 300' ENGINEERED CHAIN. ALL COMPUTATIONS WERE PERFORMED ON A MONIODE 1880 MINI-COMPUTER.

ASSISTING PERSONNEL WERE: CLYDE MULKINS, JERRY ICE, TOM HOSHALL  
 PROFESSIONAL SURVEYOR: RON STUNTZNER & AL FALES

**HISTORY OF SURVEYS:**

THIS SURVEY IS A RETRACEMENT OF THE ORIGINAL SURVEYS PERFORMED BY T.W. MEDIUM IN 1866 (EXTERIORS OF T21S) AND WILLIAM TRIEL'S 1879 AND 1892 SUBDIVISIONAL SURVEYS OF T20S R11W (SPECIFICALLY THE BOUNDARIES OF SECTION 34) PRIVATE SURVEYS INCLUDED THE DOUGLAS COUNTY SURVEYOR'S MONUMENTATION IN 1964 OF THE SOUTHWEST SECTION CORNER AND IN 1969 THE 1/4 CORNER BETWEEN SECTION 26 AND SECTION 35 (CORNER #5) AS PERPETUATED BY CLAUDE KERR IN 1953 (C.S. MAP #11/119) BRUCE A. SHAWER IN HIS 1981 SURVEY (C.S. MAP #RM3-48) PROPORTIONED THE SOUTH 1/4 S34 AND THE SOUTHEAST SECTION CORNER (CORNER #13). THE 1/4 BETWEEN SECTION 35 AND SECTION 2 WAS REMONUMENTED BY EPSTEIN IN 1979, GODFREY IN 1964, AND B.A. SHAWER IN 1981.

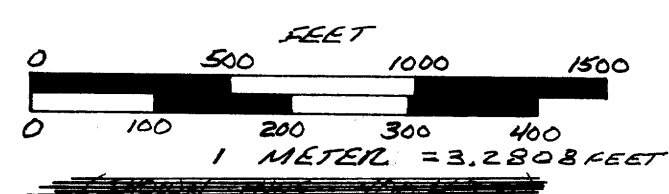
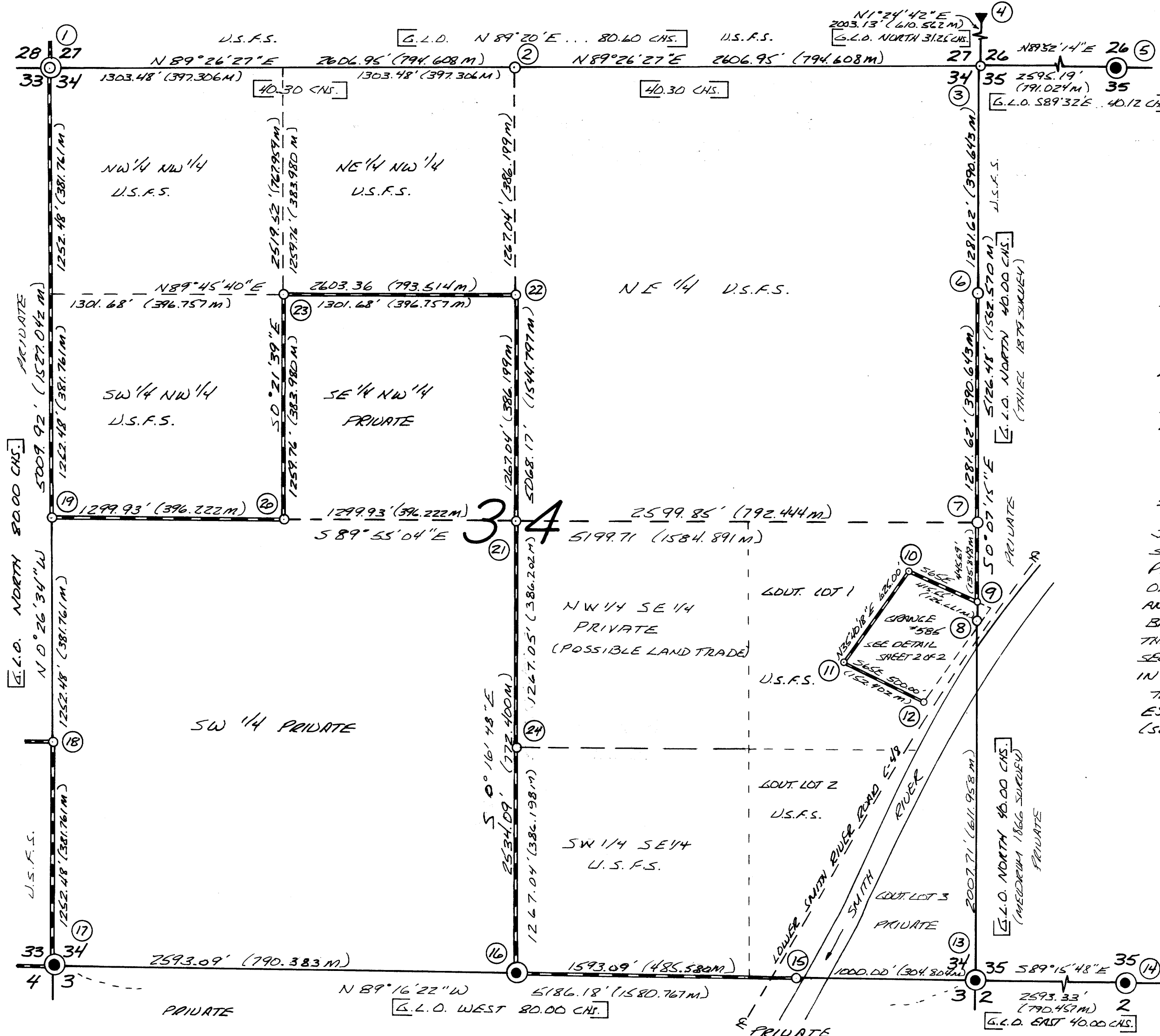
THE COUNTY ROAD SURVEY MAP (RD #C-48) PERFORMED BY J.C. FREAR IN 1931 TIED AND ESTABLISHED THE BASIS OF CONTROL IN MONUMENTING THE SMITH RIVER GRANGE #585 SITE. (SEE DETAIL ON SHEET 2 OF 2)

**LEGEND**

- MONUMENTS FOUND (TYPE AS NOTED - SEE CORNER NOTES SHEET 2 OF 2)
- MONUMENTS SET - A.C.R.P. 2 1/2" X 3" ALUM. FLARED PIPE W/ 3" ALUM. CAP (MONUMENTATION AS PER ORIGINAL B.T.S. ONLY)
- MONUMENTS SET - A.C.R.P. 2 1/2" X 3" ALUM. FLARED PIPE W/ 3" ALUM. CAP (PROPORTIONED AND SUBDIVISIONAL AND AS PER DEED)
- PROPERTY LINES POSTED AT 200' SPACING, WITH 6" FIBRE GLASS POSTS AND DECAL SIGNS (USFS B.O.V. AND SURVEY MONUMENT SIGNS AT CORNERS)
- BASIS OF BEARING = SOLAR OBSERVATION NEAR THE SW CORNER OF SECTION 33
- G.L.O. BRG. - DIST. = ORIGINAL GOVERNMENT MEASURE

**NOTE:** THE ORIGINAL LINE TREES BETWEEN SEC. 33 AND SEC. 34 WERE SEARCHED FOR AND NOT FOUND (SEVERAL STUMPS WERE TIED W/ INCONCLUSIVE RESULTS)

▼ ORIGINAL GOVERNMENT - LINE TREE FOUND (SEE CORNER NOTES, SHEET 2 OF 2)



**INDEX**

PLAT OF SURVEY	SHEET 1 OF 2
CORNER NOTES	SHEET 2 OF 2
GRANGE SURVEY	SHEET 2 OF 2
GRANGE CORNER NOTES	SHEET 2 OF 2

MAP FILE 11291-548

MAP FILE M. 91 - 548