

# SUBDIVISION SECTION 34, TOWNSHIP 20 SOUTH, RANGE 11 WEST W.M., DOUGLAS COUNTY, OREGON

**SURVEY BY**  
**STUNTZNER ENGINEERING & FORESTRY**  
 PO BOX 118 ... 705 SO. 4TH ... COOS BAY OREGON  
 PH 503 267 2872  
**97420**

COUNTY SURVEYORS FILE DATA  
 DO NOT REMOVE FROM OFFICE

**SURVEY FOR:** SIUSLAW NATIONAL FOREST  
 P.O. BOX 1148  
 CORVALLIS OREGON 97330  
 CONTRACT NO. 53-04 TO-1-0497N  
 JOHNSLICK CADASTRAL SURVEY  
**SHEET 1 OF 2**

FILED 68  
 RECEIVED 7/8  
 MAR 31 1982  
 COUNTY SURVEYOR  
 DOUGLAS COUNTY, ORE.  
 62

**CERTIFICATION** I HEREBY CERTIFY THAT THE PLAT AND NOTES HEREON ARE A CORRECT REPRESENTATION OF THE SURVEY PERFORMED IN JUL-DEC, INCLUSIVE, 1981 AND JAN-FEB, INCLUSIVE, 1982 AND IS IN ACCORDANCE WITH OUR U.S.F.S. CONTRACT, THE 1973 BLM MANUAL OF SURVEYING AND THE STATUTES OF THE STATE OF OREGON

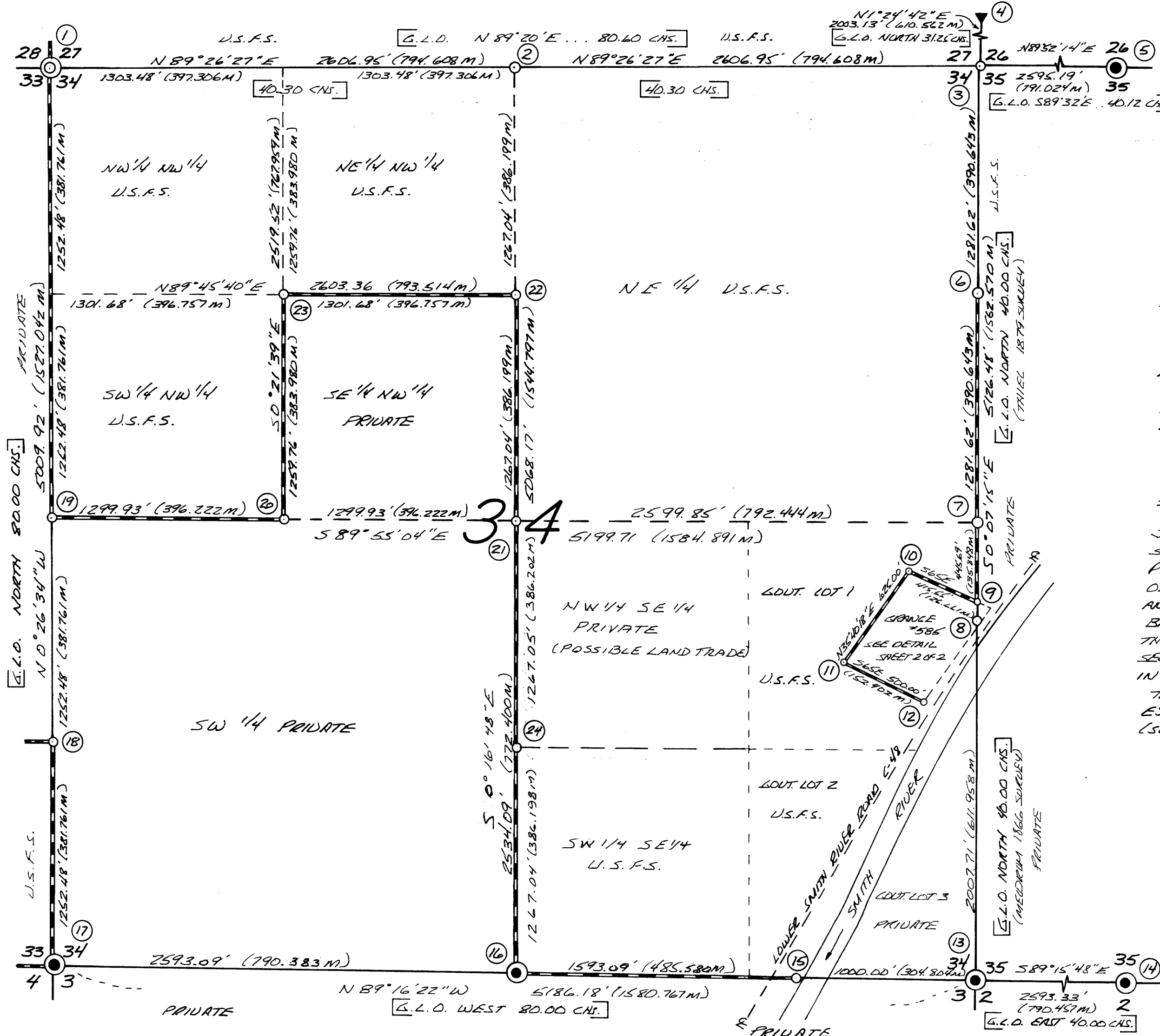
*Ronald E. Stuntzner*  
 RONALD E. STUNTZNER PLS 1342 OREGON

DATE: FEB. 15, 1982

SCALE: 1" = 500'  
 SHEET 1 OF 2



MAG. DEC. 19° E.



**NARRATIVE**

THE PURPOSE OF THIS SURVEY PERFORMED IN ACCORDANCE WITH OUR U.S.F.S. CONTRACT WAS TO RECOVER OR ESTABLISH THE PRIMARY CONTROLLING CORNER (1/4 SECTION AND 1/4 CORNER) OF SECTION 34 T20S R11W. INTERIOR 1/16 CORNERS WERE ESTABLISHED AT OWNERSHIP CORNERS AND PROPERTY BOUNDARIES MARKED ALONG THOSE LINES DIFFERENTIATING PUBLIC AND PRIVATE LANDS, SHOWN THIS (---); AN ADDITIONAL SURVEY OF THE SMITH RIVER GRANGE #585 WAS PERFORMED, WITH DEED AND SURVEY MAP OF THE LOWER SMITH RIVER ROAD #C-48 CONTROLLING ITS MONUMENTATION (SEE DETAIL ON SHEET 2 OF 2)

THE MONUMENTATION CONTROL TRAVELESSES WERE ALL CLOSED LOOPS HAVING CLOSURE ACCURACIES ABOVE 1:6000 FT. POSTED BOUNDARY CONTROL INCLUDED RADIAL TRAVELESSES AS NEEDED.

THE EQUIPMENT USED: WILD T-11 AND TEWA 1 MIN. THEODOLITES, DI4 WILD AND MARIE E.D.M.'S, 300' ENGINEERED CHAIN. ALL COMPUTATIONS WERE PERFORMED ON A MONIODE 1880 MINI-COMPUTER.

ASSISTING PERSONNEL WERE: CLYDE MULKINS, JERRY ICE, TOM HOSHALL  
 PROFESSIONAL SURVEYOR: RON STUNTZNER & AL FALES

**HISTORY OF SURVEYS:**

THIS SURVEY IS A RETRACEMENT OF THE ORIGINAL SURVEYS PERFORMED BY T.W. MEDIUM IN 1866 (EXTERIORS OF T20S) AND WILLIAM TRIEL'S 1879 AND 1892 SUBDIVISIONAL SURVEYS OF T20S R11W (SPECIFICALLY THE BOUNDARIES OF SECTION 34) PRIVATE SURVEYS INCLUDED THE DOUGLAS COUNTY SURVEYOR'S MONUMENTATION IN 1964 OF THE SOUTHWEST SECTION CORNER AND IN 1969 THE 1/4 CORNER BETWEEN SECTION 26 AND SECTION 35 (CORNER #5) AS PERPETUATED BY CLAUDE KERR IN 1953 (C.S. MAP #11/119) BRUCE A. SHAWER IN HIS 1981 SURVEY (C.S. MAP #RM3-48) PROPORTIONED THE SOUTH 1/4 S34 AND THE SOUTHEAST SECTION CORNER (CORNER #13). THE 1/4 BETWEEN SECTION 35 AND SECTION 2 WAS REMONUMENTED BY EPSTEIN IN 1979, GODFREY IN 1964, AND B.A. SHAWER IN 1981.

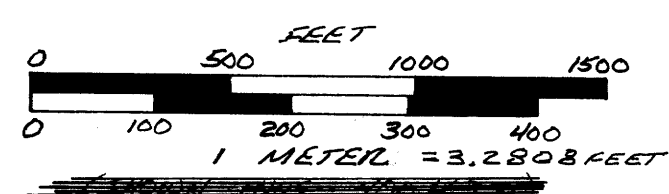
THE COUNTY ROAD SURVEY MAP (RD #C-48) PERFORMED BY J.C. FREAR IN 1931 TIED AND ESTABLISHED THE BASIS OF CONTROL IN MONUMENTING THE SMITH RIVER GRANGE #585 SITE. (SEE DETAIL ON SHEET 2 OF 2)

**LEGEND**

- MONUMENTS FOUND (TYPE AS NOTED - SEE CORNER NOTES SHEET 2 OF 2)
- MONUMENTS SET - A.C.R.P. 2 1/2" X 3" ALUM. FLARED PIPE W/ 3" ALUM. CAP (MONUMENTATION AS PER ORIGINAL B.T.S. ONLY)
- MONUMENTS SET - A.C.R.P. 2 1/2" X 3" ALUM. FLARED PIPE W/ 3" ALUM. CAP (PROPORTIONED AND SUBDIVISIONAL AND AS PER DEED)
- PROPERTY LINES POSTED AT 200' SPACING, WITH 6" FIBRE GLASS POSTS AND DECAL SIGNS (USFS B.O.V. AND SURVEY MONUMENT SIGNS AT CORNERS)
- BASIS OF BEARING = SOLAR OBSERVATION NEAR THE SW CORNER OF SECTION 33
- G.L.O. BRG. - DIST. = ORIGINAL GOVERNMENT MEASURE

**NOTE:** THE ORIGINAL LINE TREES BETWEEN SEC. 33 AND SEC. 34 WERE SEARCHED FOR AND NOT FOUND (SEVERAL STUMPS WERE TIED W/ INCONCLUSIVE RESULTS)

▼ ORIGINAL GOVERNMENT - LINE TREE FOUND (SEE CORNER NOTES, SHEET 2 OF 2)



**INDEX**

PLAT OF SURVEY	SHEET 1 OF 2
CORNER NOTES	SHEET 2 OF 2
GRANGE SURVEY	SHEET 2 OF 2
GRANGE CORNER NOTES	SHEET 2 OF 2

MAP FILE 11291-548

MAP FILE M. 91 - 548

**SUBDIVISION SECTION 34, T.20S., R.11W  
JOHNSLICK CADASTRAL SURVEY  
SHEET 2 OF 2**

**CORNER NOTES**

NOTE: ALL BTS WERE MEASURED TO THE SIDE CENTER OF TREE AT THE BASE (STUMP HEIGHT), WITH BT TAGS, ATTN. SIGNS AND RED PAINT AS PER THIS CONTRACT. FOR ADDITIONAL CORNER DETAILS (ACCESS AND TOPOG.) SEE U.S.F.S. FORM #7100-52  
ALL R.C.A.P. MONUMENTS SET WERE 2 1/2" R.W.M. PIPE W/ 3" R.W.M. CAP

① 28 27 / 33 34; FOUND ORIGINAL NE BT. RE-ESTABLISHED ORIGINAL CORNER POSITION. SET A.C.A.P. MARKED:  
FROM WHICH: ORIGINAL BT BLD: 16" (NOW 31") ALDER NSDE @ 43 1/2 FT. (VISIBLE PARTIAL BARK SCRIBES)  
1981 BTs: 14" D.FIR BLD: 56 7/8 @ 84 1/2 FT. (SCR. T205 R11W 534 BT)  
53" W.R. CEDAR BLD: 55 3/4 @ 78 1/2 FT. (SCR. T205 R11W 533 BT)  
18" ALDER BLD: N46W @ 43 1/2 FT. (BARK SCR. T205 R11W 528 BT)  
NOTE: CORNER POSITION FALLS ON ALDER FURT AS ORIGINALLY CALLED, CALLED TO N.E. AND WEST CHECKED, W/OLD BURSES.

② 527 1/4; SET R.W.M. CAP ROCK MONUMENT AT PROPORTIONED MID-PT. 534 (NO EVIDENCE OF ORIGINAL CORNER FOUND) A.C.A.P. MARKED:  
1981 BTs: 34" W.R. CEDAR BLD: 56 1/4 @ 80 1/2 FT. (SCR. N44 534 BT)  
(RUSD 54" D.FIR W/32" SCHOOLEDMARKED STEM BLD. 56 1/2 @ 78 1/2)  
26" MAPLE BLD: N7W @ 99 1/2 FT. (SCR. S 1/4 527 BT)  
③ 27 26 / 34 35; SET A.C.A.P. AT DOUBLE PROPORTIONED SECTION CORNER, MARKED:  
(ORIG. CALLS CHECKED NOWHERE NO DRILL EVIDENCE FOUND)  
1981 BTs: 24" D.FIR BLD: N54E @ 44 1/2 FT. (SCR. T205 R11W 526 BT)  
20" ALDER (POOR CONDITION) BLD: 51E @ 34 1/2 FT. (BARK SCR. T205 R11W 535 BT)  
34" D.FIR BLD: 570W @ 59 1/2 FT. (SCR. T205 R11W 534 BT)  
40" D.FIR BLD: N44W @ 29 1/2 FT. (SCR. T205 R11W 527 BT)  
50" D.FIR REMAINS (VERY OLD SNAG) BLD: 516E @ 88 1/2 FT. - NOT TAGGED

④ FOUND ORIGINAL GOVERNMENT LINE TREE; ORIG. 42" D.FIR (NOW 78" STUMP) SET WITNESS CORNER A.C.A.P., WHICH BLD: N10 22 39 1/2 @ 17.68 FT. MARKED:  
1981 W.C. BTs: 6" ALDER BLD: 560E @ 19 1/2 FT.; 8" ALDER BLD: N71W @ 16 1/2 FT. (BOTH BTs BARK SCR. T205 R11W 526, 527 W.C. BT)  
(DRILL STUMP TAGGED & PRINTED RED W/ ATTN. SIGN POSTED)  
⑤ 526 1/4; FOUND ORIGINAL CORNER AS PERPETUATED BY CLAUDE KERE IN 1963 (SEE C.S. MAP #41119) AND IN 1969 REMONUMENTED BY DOUGLAS COUNTY SURVEYOR, FOUND 2" I.P.I.P.E. W/ 2 1/2" BRASS CAP (2" I.P.I.P.E. ALONGSIDE ALSO) MARKED:  
1963 BTs FOUND: 14" MAPLE BLD: N69E @ 76 1/2 FT. (TAGGED W/ HEALED FACE)  
8" (NOW 10") MAPLE BLD: 538W @ 96 1/2 FT. (TAGGED W/ HEALED FACE)  
NO COUNTY BTs OF RECORD

⑥ N 1/6 34 35; SET R.W.M. CAP ROCK MONUMENT AT N 1/6, MARKED:  
1981 BTs: 66" D.FIR BLD: N18E @ 57 1/4 FT. (SCR. N 1/6 535 BT)  
12" D.FIR BLD: 52EW @ 21 1/2 FT. (SCR. N 1/6 534 BT)

⑦ 34 35 1/4; SET A.C.A.P. AT PROPORTIONED POSITION, CAP MARKED:  
(NO EVIDENCE OF ORIGINAL CORNER FOUND)  
1981 BTs: 22" D.FIR BLD: N6E @ 33 1/2 FT. (SCR. W 1/4 535 BT)  
22" D.FIR BLD: 51E @ 21 1/4 FT. (SCR. W 1/4 535 BT)  
23" D.FIR BLD: N35W @ 19 1/2 FT. (SCR. E 1/4 534 BT)

⑧ W.C.M.C. SET A.C.A.P. AS WITNESS CORNER TO MEANDER CORNER, MARKED:  
(PROPORTIONED ORIG. M.C. LOCATION FALLS IN SMITH RIVER, 50° BTs @ E 199 3/4 FT.)  
1982 BTs: 32" D.FIR BLD: N48E @ 25 1/2 FT. (SCR. W.C. 535 BT)  
12" D.FIR BLD: N30W @ 39 1/2 FT. (SCR. W.C. 534 BT)

⑨ 5 1/6 33 34; SET A.C.A.P. AT S 1/6, CAP MARKED:  
1982 BTs: 16" D.FIR BLD: 572E @ 51 1/2 FT. (SCR. S 1/6 534 BT)  
8" NEMLOCK BLD: 54W @ 42 1/4 FT. (SCR. S 1/6 533 BT)

⑩ 5 1/6 34; SET A.C.A.P. AT S 1/6, CAP MARKED:  
1982 BTs: 16" MAPLE BLD: 536E @ 43 FT.  
20" W.R. CEDAR BLD: N45W @ 22 1/2 FT. (BOTH BTs: SCRIBED S 1/6 534 BT)

**SMITH RIVER GRANGE #585 MONUMENTATION NOTES  
SEE GRANGE SURVEY DETAIL**

⑨ SET R.C.A.P. AT POINT ON NORTHEAST LINE GRANGE #585 AND INTERSECTION WITH SECTION LINE BETWEEN S34 AND S35, MARKED:  
1982 BT: 10" CEDAR BLD: N14E @ 15 1/2 FT. (SCR. AP 1 BT)

⑩ SET A.C.A.P. AT NW CORNER OF GRANGE #585, MARKED:  
1982 BT: 18" D.FIR BLD: N18W @ 30.5 FT. (SCR. AP 4 BT)

⑪ SET 3" R.W.M. ROCK MONUMENT AT SW CORNER OF GRANGE #585, MARKED:  
1982 BT: 14" ALDER BLD: 526E @ 35 1/2 FT. (SCR. AP 3 BT)

⑫ SET A.C.A.P. AT SE CORNER OF GRANGE #585, MARKED:  
1982 BT: 24" D.FIR BLD: N25W @ 28 1/2 FT. (SCR. AP 2 BT)

⑬ FOUND PROPORTIONED CORNER AS ESTABLISHED BY B.A. SHAWNER'S 1981 SURVEY, MAP #EM 3-48, FOUND 2" STAPE W/ 2 1/2" BRASS CAP, MARKED: (NO DRILL EVIDENCE FOUND)  
SHAWNER'S 1981 BTs FOUND: 28" W.R. CEDAR BLD: N89 1/2 E @ 140 FT. (SCR. T205 R11W 534 BT)  
28" SPRUCE BLD: 541E @ 136 1/2 FT. (SCR. T215 R11W 52 BT)  
14" ALDER BLD: 566W (REC. 570W) @ 27 1/4 FT. (BARK SCR. T215 R11W 53 BT)  
20" ALDER BLD: N63W (REC. N59W) @ 85 1/2 FT. (BARK SCR. T205 R11W 534 BT)

⑭ 35 1/4; FOUND ORIGINAL CORNER AS REMONUMENTED BY B.A. SHAWNER IN 1981, AD. 2" I.P.I.P.E. W/ 2 1/2" B. CAP MARKED:  
FROM WHICH: 34" I.P.I.P.E. BLD: SOUTH @ 0 1/2 FT.  
ORIGINAL BT FOUND: 60" W.R. CEDAR BLD: 54W (REC. 510W) @ 10 1/2 FT. (OPEN FACE W/ VISIBLE SCRIBES)  
GODFREY'S 1964 BT FOUND: 24" W.R. CEDAR BLD: NSBE @ 34 1/2 FT. (HEALED FACE W/ PARTIAL VISIBLE SCRIBES)

⑮ SET A.C.A.P. AS WITNESS CORNER TO MEANDER CORNER, MKD: (PROPORTIONED ORIG. M.C. LOCATION FALLS IN SMITH RIVER, 58° BTs @ 79 1/2 FT.)  
1982 BTs: 8" W.R. CEDAR BLD: 587W @ 85 1/2 FT. (SCR. W.C. 53 BT)  
1982 B.O.s: DOUGLAS COUNTY SURVEYOR'S BRASS CAP STATION "5-7" BLD: N8 22 07 E @ 238.49'  
POWER POLE #10-110 BLD: 59W @ 106 1/2 FT. (BT TAG ONLY)  
NOEL RANCH BOAT RAMP SIGN W/ ROCK BASE BLD: N2E @ 159 1/2 FT.  
NOTE: ALSO SEE REFERENCE TO GLEN NOEL PRIVATE M.C. IN DETAIL OF GRANGE #585 SURVEY (SEE DETAIL)

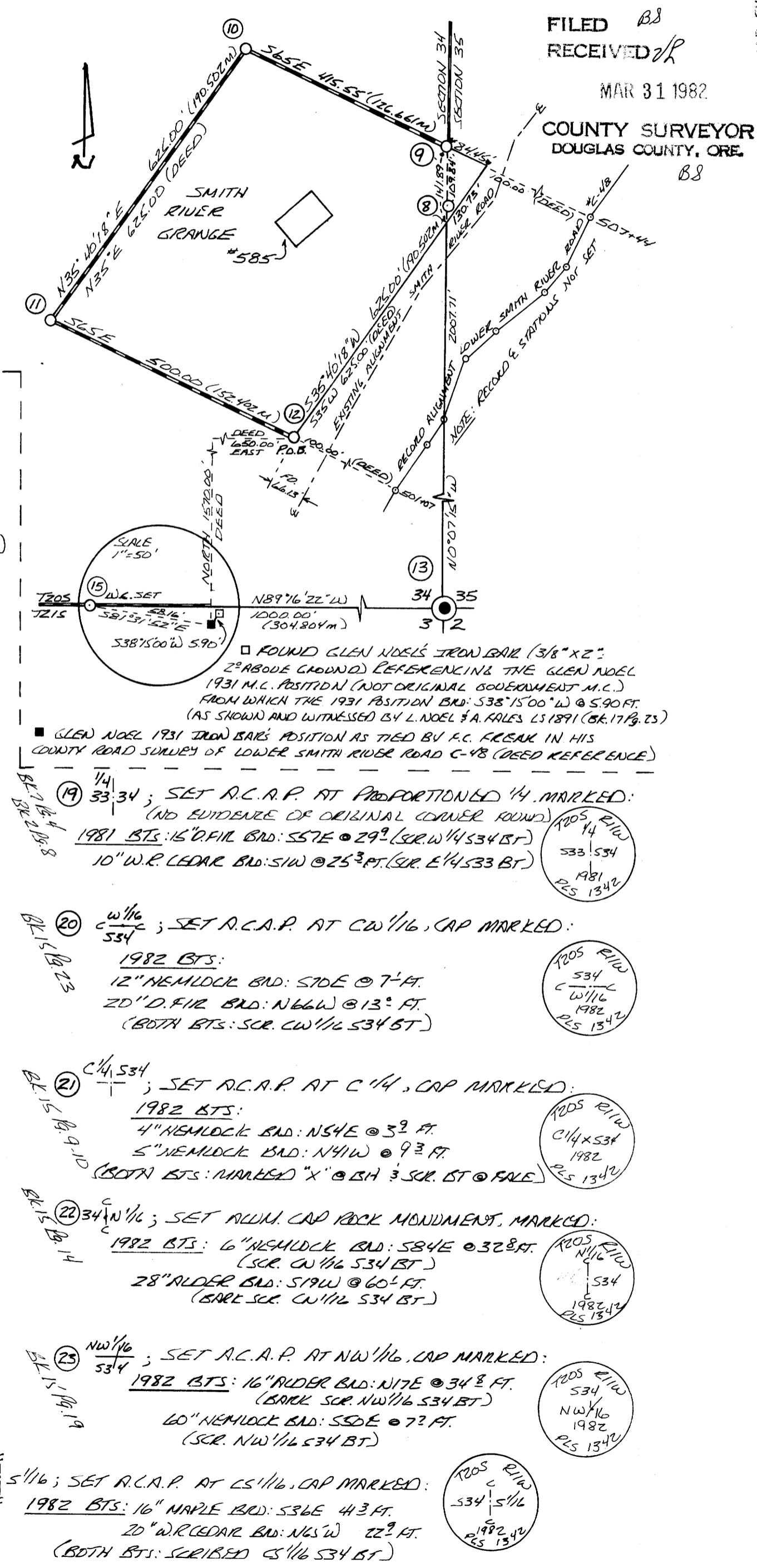
⑯ 534 1/4; FOUND PROPORTIONED CORNER AS ESTABLISHED BY B.A. SHAWNER'S 1981 SURVEY, MAP #EM 3-48, FOUND 2" I.P.I.P.E. W/ 2 1/2" BRASS CAP, MARKED:  
(NO ORIGINAL CORNER EVIDENCE FOUND)  
SHAWNER'S 1981 BTs FOUND:  
14" SPRUCE BLD: 543W @ 10 1/2 FT. (SCR. 1/4 53 BT)  
72" W.R. CEDAR N79W @ 72 1/2 FT. (SCR. 1/4 534 BT)

⑰ 33 34 / 4 1/3; FOUND ORIGINAL CORNER, COUNTY SURVEYOR B.O.P.  
1" I.P.I.P.E. W/ 2 1/2" BRASS CAP MARKED:  
ORIGINAL BTs FD: 48" D.FIR (LIVE) BLD: 555W @ 21 1/2 FT. (VISIBLE SCR. "B" IN HEALED FACE)  
64" UPDOTTED D.FIR BLD: N55W @ 28 1/2 FT. (VISIBLE STAMP ONLY)  
48" D.FIR (STUMP) BLD: 525E @ 13 1/2 FT. (OLD CHIPPING IN OLD FACE)  
1964 COUNTY BTs FOUND: 34" D.FIR (SNAG) BLD: N17W @ 50 1/2 FT. (HEALED FACE)  
12" NEMLOCK BLD: N1E @ 29 1/4 FT. (PARTIAL SCR. IN HEALED FACE)  
18" NEMLOCK BLD: 558E @ 27 1/4 FT. (HEALED FACE)  
NOTE: NO SUITABLE BTs AVAILABLE IN NW QUADRANT

⑱ 5 1/6 33 34; SET A.C.A.P. AT S 1/6, CAP MARKED:  
1982 BTs: 16" D.FIR BLD: 572E @ 51 1/2 FT. (SCR. S 1/6 534 BT)  
8" NEMLOCK BLD: 54W @ 42 1/4 FT. (SCR. S 1/6 533 BT)

⑳ 5 1/6 34; SET A.C.A.P. AT S 1/6, CAP MARKED:  
1982 BTs: 16" MAPLE BLD: 536E @ 43 FT.  
20" W.R. CEDAR BLD: N45W @ 22 1/2 FT. (BOTH BTs: SCRIBED S 1/6 534 BT)

**SMITH RIVER GRANGE #585 SURVEY DETAIL  
SURVEY PERFORMED AS PER DEED REF. #98-269, COUNTY RECORDS  
(SURVEY DATA FIELD BK. 17) SCALE 1" = 200'**



FILED B8  
RECEIVED  
MAR 31 1982  
COUNTY SURVEYOR  
DOUGLAS COUNTY, ORE.  
B8