

SUBDIVISION SECTION 33, TOWNSHIP 20 SOUTH, RANGE 11 WEST W.M., DOUGLAS COUNTY, OREGON

SURVEY BY

STUNTZNER ENGINEERING & FORESTRY
 PO BOX 118 ... 705 SO 4TH ... COOS BAY OREGON
 PH 503 267 2872

COUNTY SURVEYORS FILE DATA
 DO NOT REMOVE FROM OFFICE

REGISTERED
 PROFESSIONAL
 LAND SURVEYOR

OREGON
 EST. 1917
 RONALD E. STUNTZNER
 1342

SURVEY FOR:

SIUSLAW NATIONAL FOREST
 P.O. BOX 1148
 CORVALLIS OREGON 97330
 CONTRACT NO. 53-04 TO -1-0497N
 JOHNSLICK CADASTRAL SURVEY

FILED 38
 RECEIVED 1/8
 MAR 31 1982
 COUNTY SURVEYOR
 DOUGLAS COUNTY, ORE.
 68

CERTIFICATION

I HEREBY CERTIFY THAT THE PLAT AND NOTES HEREON ARE A CORRECT REPRESENTATION OF THE SURVEY PERFORMED IN JULY 1981 - JANUARY 1982 IN ACCORDANCE WITH OUR U.S.F.S. CONTRACT, THE 1973 BLM MANUAL OF SURVEYING AND THE STATUTES OF THE STATE OF OREGON

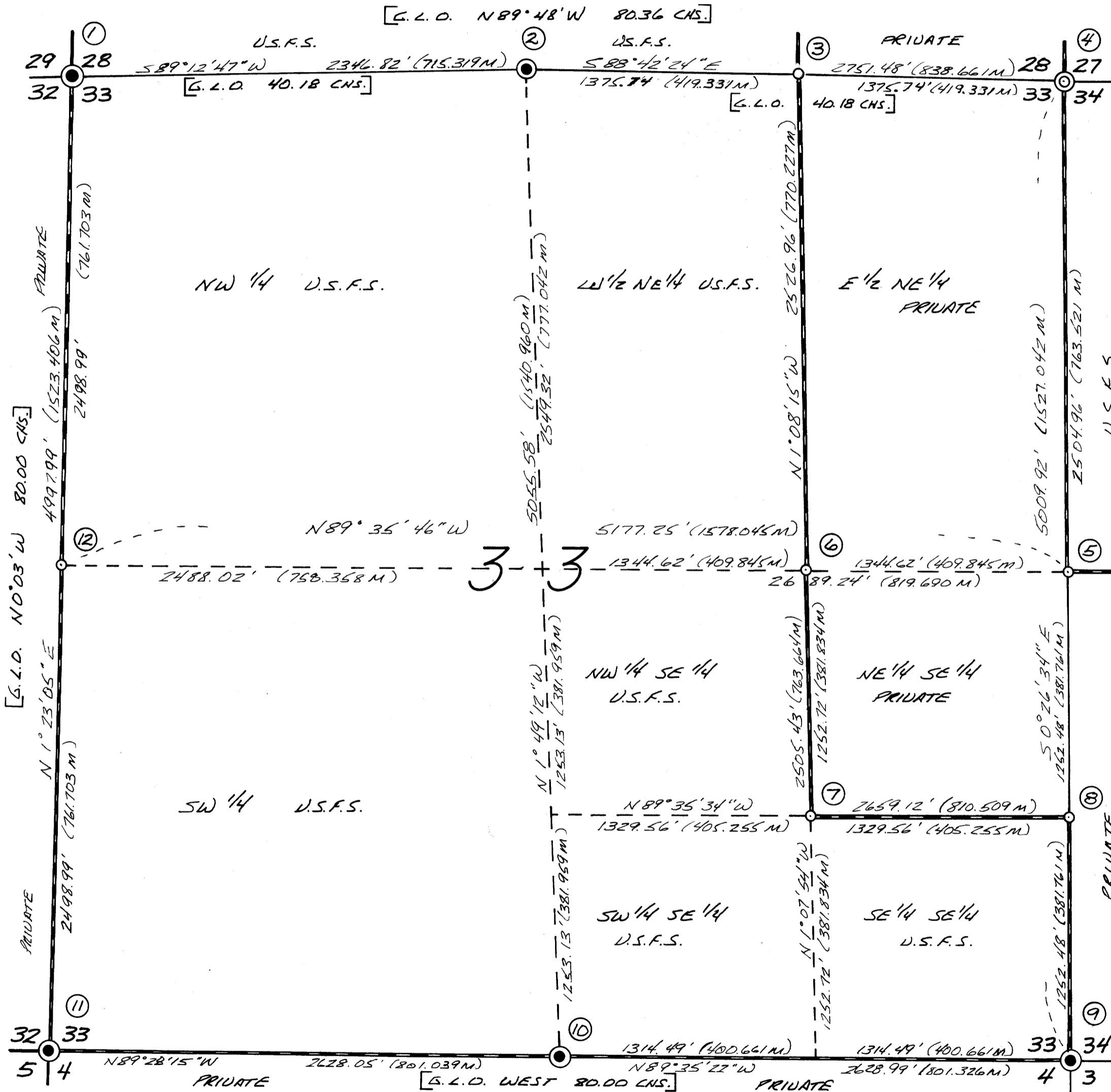
Ronald E. Stuntzner
 RONALD E. STUNTZNER PLS 1342 OREGON

SCALE 1" = 500'
 DATE FEB. 8, 1982

MAG. DEC. 19° EAST

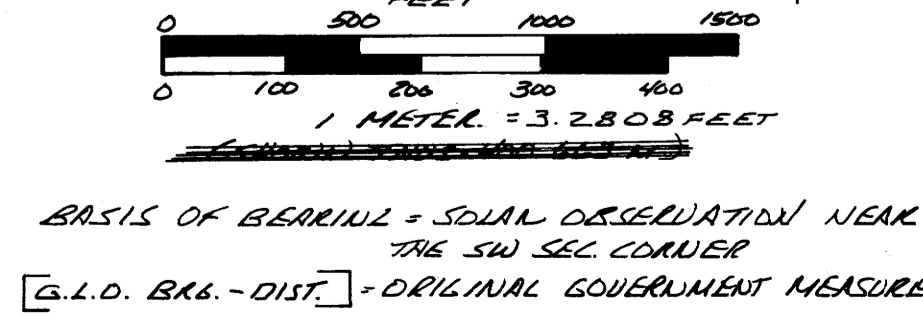
CORNER NOTES

NOTE: ALL BTS WERE MEASURED TO THE SIDE CENTER OF TREE AT BASE, WITH BT TAGS, SIGNS & RED PAINT AS PER THIS CONTRACT FOR ADDITIONAL CORNER DETAIL (ACCESS & TOPOL). SEE USFS FORM "TILD-52"



- ① FOUND ORIGINAL CORNER COUNTY SURVEYOR B.C.I.P. MARKED: 1" I-PIPE W/ 2" BRASS CAP. ORIGINAL BT'S: ROTTED STUMP (REL. SPRUCE) BIRD. N 80° 39' 4" (NO VISIBLE SCRIBES). 48" D. FIR STUMP B.D. 546E @ 69° FT. (BARELY VISIBLE SCR). 1964 COUNTY BT'S: 8" D. FIR (NOW DOWN) B.D. N 71° 12' 4" (VISIBLE SCRIBES). 11" D. FIR (NOW 12") B.D. 569E @ 33° FT. (HEALED FACE). 13" D. FIR (NOW 20") B.D. 59W @ 18° FT. (HEALED FACE). 10" D. FIR B.D. N 14° W @ 11° FT. (HEALED FACE). ROTTED ORK. HEMLOCK REMAINS B.D. 513W @ 57° FT. (REL. 58°). 1981 BT'S: 16" D. FIR B.D. N 32° E @ 35° FT. (SCRIBED T205 R11W 528 BT).
- ② FOUND ORIGINAL CORNER TREE 30" MAPLE (NOW 48" NODD) STUMP FROM WHICH B.C. COUNTY SURVEYOR B.C.I.P. MARKED: 1" I-PIPE W/ 2" BRASS CAP. B.D. N 7° D 4' 4" E @ 2.85'. ORIGINAL BT'S: 24" MAPLE (NOW 48" STUMP B.D. N 75° W @ 34° FT. 1964 COUNTY BT'S: 48" D. FIR STUMP (REL. 66") B.D. N 11° E @ 15° FT. NO ALDER BT'S FOUND. (MAPLE BT HAS CHIPPED OPEN FACE, FIR IS HEALED).
- ③ SET A.C.A.P. AT E 1/16, MARKED: FROM WHICH B.C. 22" SPRUCE (TWIN TOPPED) N 79° E @ 63° (SCR. E 1/16 528 BT), 12" MAPLE (TOP OF STUMP) B.D. 520E @ 32° FT. (SCR. E 1/16 533 BT). NOTE: CORNER HALL 25° FT. WEST OF NOEL CREEK.
- ④ FOUND ORIGINAL N.E. BT RE-ESTABLISHED ORIG. CORNER POSITION, SET A.C.A.P. MARKED: DEL. ALDER BT 16" (NOW 21" B.D. N 50° E @ 43° (WITH VISIBLE PARTIAL BARK SCRIBES). 1981 BT'S: 4" D. FIR B.D. 367E @ 84° FT. (SCR. T205 R11W 534 BT), 53" W. CEDAR B.D. 553W @ 78° FT. (SCR. T205 R11W 533 BT), 18" ALDER B.D. N 44° W @ 43° FT. (BARK SCR. T205 R11W 528 BT) NOTE: CORNER HALL ON ALDER FLAT AS ORIG. CALLED, CALL TO N. S.E. 1/4 WEST CHECKED WITH OLD ISAZES.
- ⑤ SET A.C.A.P. AT PROPORTIONED 1/4, MARKED: (NO EVIDENCE OF ORIGINAL CORNER FOUND) 1981 BT'S: 15" D. FIR B.D. 557E @ 29° (SCR. W 1/4 534 BT), 10" W. CEDAR B.D. 51W @ 25° FT. (SCR. E 1/4 533 BT).
- ⑥ SET A.C.A.P. AT E 1/16, MARKED: 1982 BT: 8" D. FIR B.D. 541E @ 22° FT. (SCR. E 1/16 533 BT), 30" W. CEDAR STUMP B.D. N 28° W @ 22° FT. (SCR. E 1/16 533 BT IN NEARLY WOOD).
- ⑦ SET A.C.A.P. AT SE 1/16, MARKED: 1982 BT: 32" ALDER B.D. 54W @ 47° FT., 22" ALDER B.D. N 63° W @ 23° FT. (BOTH BT'S BARK SCR. SE 1/16 533 BT).
- ⑧ SET S 1/16 533/534, A.C.A.P. MARKED: 1982 BT'S: 16" D. FIR B.D. 572E @ 51° FT. (SCR. S 1/16 534 BT), 8" HEMLOCK B.D. 54W @ 42° FT. (SCR. S 1/16 533 BT).
- ⑨ FOUND ORIGINAL CORNER COUNTY SURVEYOR B.C.I.P. MKD: 1" I-PIPE W/ 2" BRASS CAP. ORIGINAL BT'S: 48" D. FIR (LIVE) B.D. 555W @ 27° FT. (V. VISIBLE SCR "B" IN HEALED FACE); 54" D. PROTOTYPED D. FIR B.D. N 55° W @ 28° FT. (VISIBLE SCAR) 48" D. FIR (STUMP) B.D. 525E @ 13° FT. (OLD CHIPPINGS IN OLD FACE). 1964 COUNTY BT'S: 34" D. FIR (SNAG) B.D. N 17° W @ 50° (HEALED FACE); 12" HEMLOCK B.D. N 1° E @ 29° (PARTIAL SCR. VISIBLE); 18" HEMLOCK B.D. 558E @ 27° FT. (HEALED FACE). NOTE: NO SUITABLE BT'S AVAILABLE IN NW QUADRANT.
- ⑩ FOUND DOUGLAS COUNTY SURVEYOR RECOMMENDATION OF RE-STUNTZNER'S 1969 SEC. 4 T215 R11W PROPORTIONED 1/4 FOUND 1" I-PIPE W/ 2" BRASS CAP. MARKED: FROM WHICH 1969 1" I-PIPE B.D. 525S @ 0° FT. 1969 BT'S: 36" D. FIR B.D. N 50° W @ 18° FT. (BARK SCR. 533 514); 44" D. FIR B.D. N 82° E @ 95° FT. (SCR. 533/14) 1977 COUNTY BT: 48" D. FIR B.D. 54° W @ 38° FT. (SCR. 1/4 54 25 BT).
- ⑪ FOUND ORIGINAL CORNER W/ COUNTY SURVEYOR B.C.I.P. MARKED: 1" I-PIPE W/ 2" BRASS CAP. ORIGINAL BT: 54" D. FIR (STUMP) B.D. N 75° E @ 30° (CHIPPED OPEN - ROTTED). 1964 COUNTY BT'S: 10" HEMLOCK B.D. N 68° E @ 42° (SCR. T205 R11W 533 BT - HEALED FACE) 8" SPRUCE (REL. HEMLOCK) B.D. N 62° E @ 20° (SCR. T205 R11W 533 C.S. BT); 7" HEMLOCK (DEAD) B.D. 583E @ 123° FT. (SCR. T215 R11W 54 C.S. BT); 9" HEMLOCK B.D. 580E @ 23° FT. (SCR. T215 R11W 54 BT); 20" HEMLOCK B.D. 585W @ 30° FT. (CLOSED FACE, HEALED); 20" D. FIR B.D. N 60° W @ 30° FT. (REL. NSW @ 30° FT.) (CLOSED HEALED FACE).
- ⑫ SET A.C.A.P. AT PROPORTIONED 1/4, MARKED: (NO EVIDENCE OF ORIGINAL CORNER FOUND) 1981 BT'S: 9" D. FIR B.D. N 60° E @ 54° FT. (SCR. 1/4 533 BT), 12" ALDER B.D. N 10° W @ 46° FT. (BARK SCR. 1/4 532 BT).

- LEGEND**
- MONUMENTS FOUND (TYPE AS NOTED - SEE CORNER NOTES)
 - MONUMENTS SET - A.C.A.P. - 2 1/2" x 30" RUM. PIPE W/ 3" RUM. CAP (AS PER ORIGINAL BT ONLY)
 - MONUMENTS SET - A.C.A.P. - 2 1/2" x 30" RUM. PIPE W/ 3" RUM. CAP (PROPORTIONED AND SUBDIVISIONAL)
 - PROPERTY LINES POSTED AT 200 FT. SPACING WITH 6" FT. FIBREGLASS POSTS AND DECAL SIGNS (USFS BOY. AND SURVEY MONUMENT SIGNS AT CORNERS)



HISTORY OF SURVEYS:
 THIS SURVEY IS A REPLACEMENT OF THE ORIGINAL SURVEYS PERFORMED BY J.W. MELDRUM IN 1866 (EXTENSIONS OF T215) AND WILLIAM THIEL'S 1879 & 1892 SUBDIVISIONAL SURVEYS OF T205 R11W (BEING SPECIFIC TO THE BOUNDARIES OF SECTION 33 OF THIS SURVEY). THE DOUGLAS COUNTY SURVEYOR, IN 1964 AND 1977 RECOMMENDED THE NW SEC. CORNER, NORTH 1/4 CORNER, S 1/4 CORNER, SE & SW SEC. CORNERS PRIVATE SURVEYS: R.E. STUNTZNER SURVEYED NORTH LINE OF SECTION 4 T215 R11W IN 1969, IN WHICH HE PROPORTIONED THE 1/4 CORNER. (SEE CORNER #10)

NARRATIVE THE PURPOSE OF THIS SURVEY PERFORMED IN ACCORDANCE WITH OUR U.S.F.S. CONTRACT WAS TO RECOVER OR ESTABLISH THE PRIMARY CONTROLLING CORNER (I.E. SECTION AND 1/4 CORNER) OF SECTION 33 T205 R11W. INTERIOR 1/16 CORNERS WERE ESTABLISHED AT OWNERSHIP CORNERS AND PROPERTY BOUNDARIES MARKED ALONG THESE LINES DIFFERENTIATING PUBLIC AND PRIVATE LANDS. SHOWN THIS (---); THE CONTROL TRAVERSES WERE ALL CLOSED LOOPS MAKING CLOSURE ACCURACIES ABOVE 1:6000 FT.
 THE EQUIPMENT USED: WILD T-16 AND JENA 1 MIN. TRIODOLITES, D/F WILD AND MAC 1E E.D.M.'S, 1300' ENGINEERS CHAIN - ALL COMPUTATIONS WERE PERFORMED ON A MONTROE 1980 MINI-COMPUTER.
 ASSISTING PERSONNEL WERE: TOM HENSHALL, TERRY ICE, CLYDE MURKIN
 PROFESSIONAL SURVEYOR: RON STUNTZNER & AL FALES.

NOTE: ORIGINAL LINE TREES BETWEEN SEC. 33 AND SEC. 34 WERE SEARCHED FOR AND NOT FOUND (SEVERAL STUMPS WERE TIED W/ INCONCLUSIVE RESULTS)