

COUNTY SURVEYORS FILE DATA  
DO NOT REMOVE FROM OFFICE

FILED *BS*  
RECEIVED *ds*

MAR 30 1982

COUNTY SURVEYOR  
DOUGLAS COUNTY, ORE.

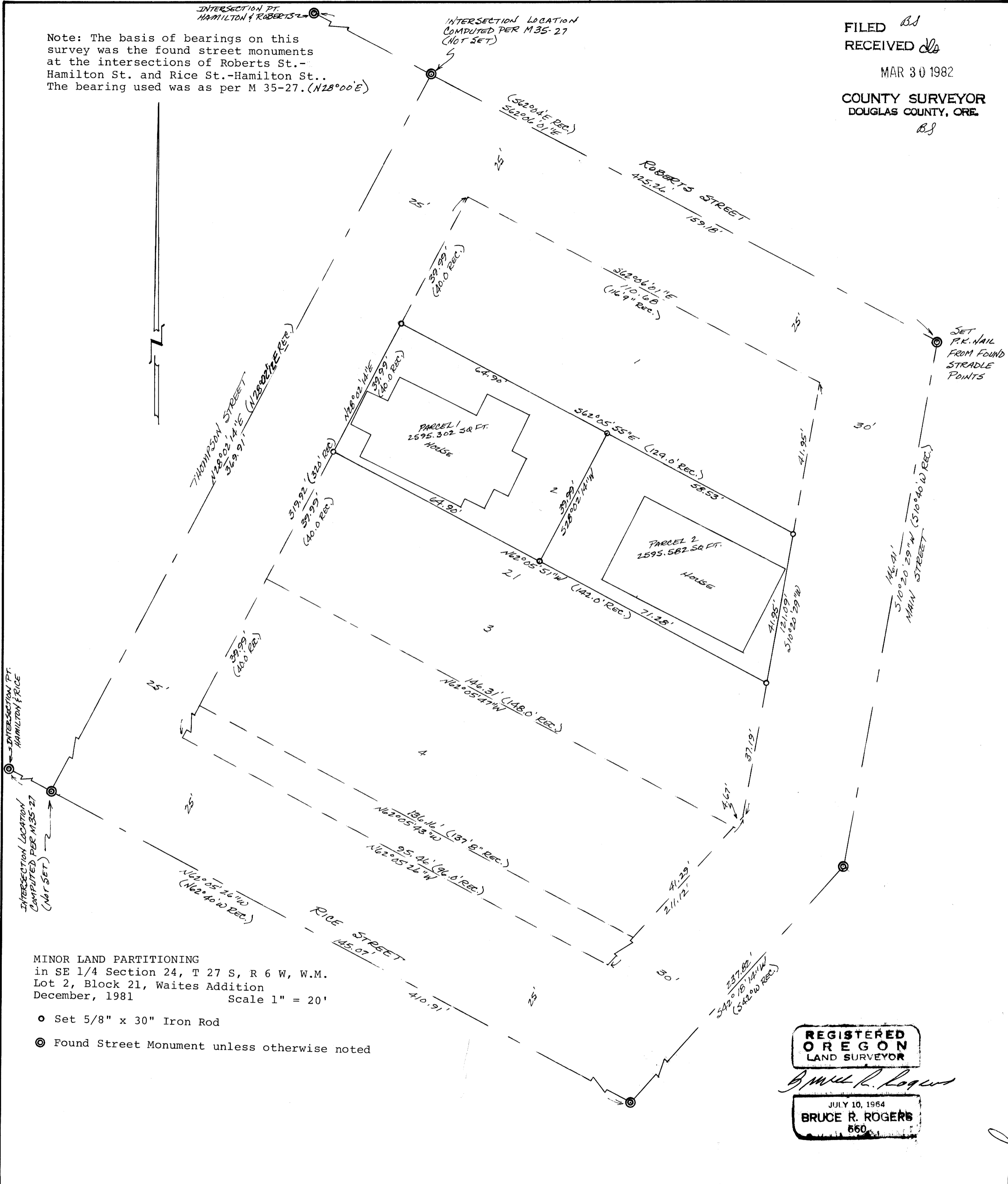
*BS*

Note: The basis of bearings on this survey was the found street monuments at the intersections of Roberts St.-Hamilton St. and Rice St.-Hamilton St.. The bearing used was as per M 35-27. (N128°00'E)

INTERSECTION PT.  
HAMILTON & ROBERTS

INTERSECTION LOCATION  
COMPUTED PER M.35-27  
(NOT SET)

SET  
P.K. NAIL  
FROM FOUND  
STRADLE  
POINTS



MINOR LAND PARTITIONING  
in SE 1/4 Section 24, T 27 S, R 6 W, W.M.  
Lot 2, Block 21, Waites Addition  
December, 1981 Scale 1" = 20'

- Set 5/8" x 30" Iron Rod
- Found Street Monument unless otherwise noted

REGISTERED  
OREGON  
LAND SURVEYOR

*Bruce R. Rogers*

JULY 10, 1964  
BRUCE R. ROGERS  
660

*38-7-1982*