

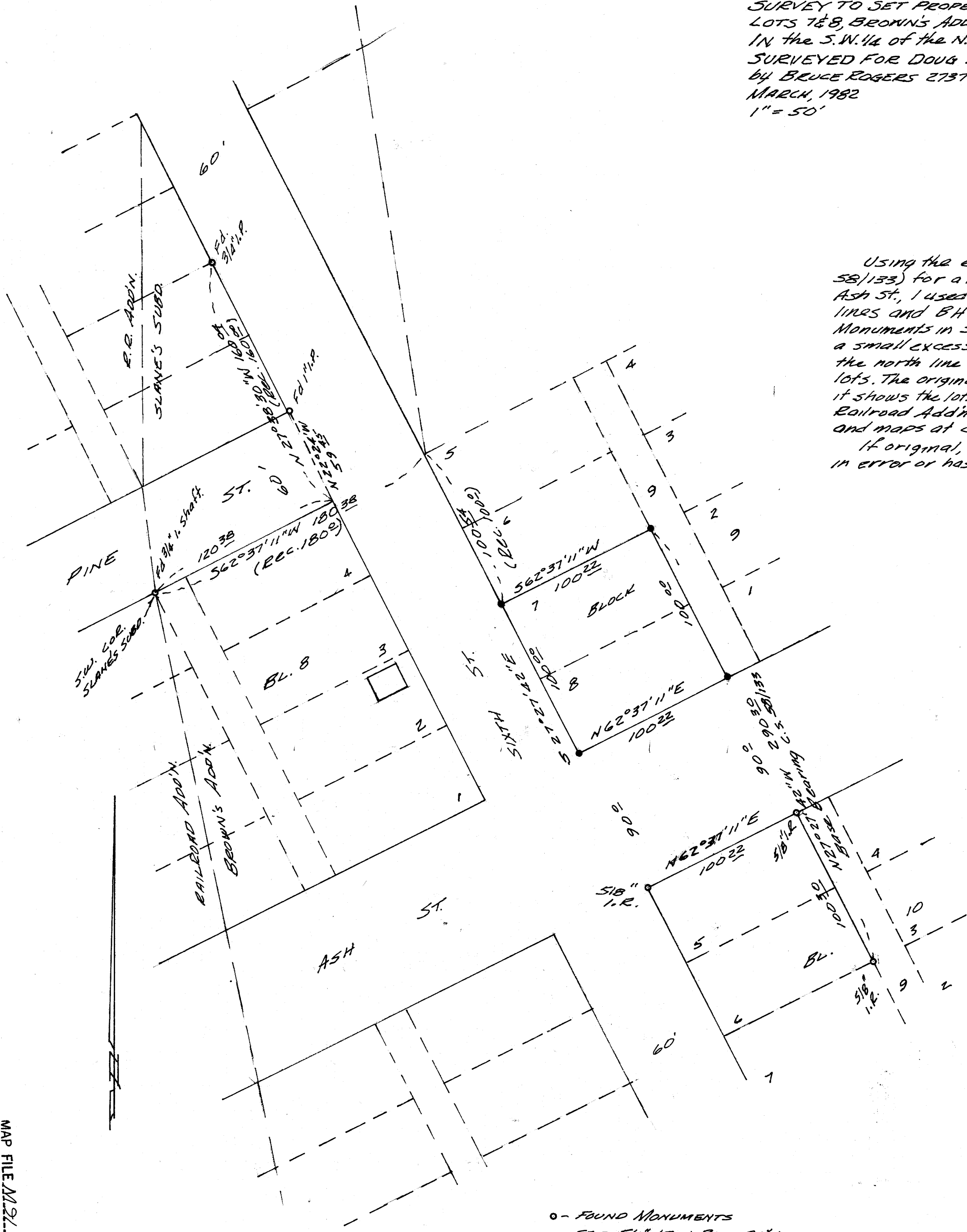
SURVEY TO SET PROPERTY CORNERS
LOTS 7 & 8, BROWN'S ADDN. TO OAKLAND, ORE. (BLOCK NINE)
IN THE S.W. 1/4 OF THE N.E. 1/4 OF SEC. 4, T. 25S, R. 5W. W.M.
SURVEYED FOR DOUG DENSE
BY BRUCE ROGERS 2737 N. W. CALKINS, ROSEBURG, OR.
MARCH, 1982
1" = 50'

FILED BS
RECEIVED JR

MAR 30 1982

COUNTY SURVEYOR
DOUGLAS COUNTY, ORE.
BS

MAP FILE M91 - 47



NARRATIVE

Using the easterly boundary of Lots 5 & 6, Block 10, (See C.S. File 58/133) for a base I ran directly around the lots. Leaving 90' for Ash St., I used record distance (100') for the easterly & westerly lines and BHW's 100' for the northerly and southerly. Location of Monuments in Slane's Subd. and information in C.S. 58/133 indicates a small excess in distances in both directions, rather than establish the north line of the subdivision I left this excess to the adjoining lots. The original plat of Brown's Addn. shows Ash St. 60' wide. However, it shows the lots 50' x 100' and shows the lot lines lining up with those in Railroad Addn. where Ash has a 90' E/W. C.S. 58/133, Assessor's maps and maps at Commercial Title Co. show 90'. If original, the pipe shown at the corner of Pine & 6th was set in error or has been moved.

REGISTERED
OREGON
LAND SURVEYOR

Bruce L. Rogers

JULY 10, 1964
BRUCE R. ROGERS
660

- - FOUND MONUMENTS
- - SET 5/8" IRON ROD, 30' LONG WITH PLASTIC CAP MARKED L.S. 660

MAP FILE M91 - 47