

PROPERTY SURVEY

COUNTY SURVEYORS FILE DATA
DO NOT REMOVE FROM OFFICE

FILED 88
RECEIVED *dr*

MAR 30 1982

COUNTY SURVEYOR
DOUGLAS COUNTY, ORE. *68*

TRACT LOCATED IN SEC. 30, T. 23 S., R. 9 W., W.M.
DOUGLAS COUNTY, OREGON

FOR
MARK WESTLEY ANSPACH
WENDY LYNN ARTIACO
AND
JAMES EDD

BY
LUCKMAN ENGINEERING & SURVEYING
Rt. #1, Box 565
COQUILLE, OR 97423

NOTE: REQUESTED AND WAS SET PREVIOUS SURVEYS
OF SAID SECTION BY DOUGLAS COUNTY SURVEYOR'S
OFFICE USED STATED INSTR. TO TIE 1/4 CORNERS
AND S.E. SECTION CORNER. CALCULATED SE. 1/4
SUBDIVISION. BY USE OF DEED NO. 78-08196
CALC. PROPERTY CORNERS. SET PROPERTY CORNERS.

NOTES:

LINE A+B CALCULATED BY PROPORTION FROM ORIG. ORIG. E-W 1/4 LINE
FOR WEST HALF = $(2584.39 + 2619.75) / 2 = 2602.07'$
 $\frac{2602.07}{2541.93} = \frac{1320}{1289.49} = \frac{1282.07}{1252.44}$

LINE C+D ORIG. DIST = 1320'

LINE E, F, G, H, I, + N DEED N = 825 ±', E = 495 ±' (F = 280 ±' ~ N 88° 30' W)
(G = 88', H = 332', I = 900', BEARING N 54° W) $\frac{1287.46}{1320} = \frac{482.79}{495} = \frac{804.66}{825}$
FROM DEED 1+H FIRST, & LAST. FINAL $\frac{1320}{495} = \frac{804.66}{825}$
DISTANCE DETERMINED BY CALCULATION OF EQUAL ADJUSTMENT
DUE TO CHANGE IN N+E

(BASIS OF BEARING)
N 88° 35' 17" W ~ 5222.77'

LINE J DEED = 429' TO N.E. COR. LOT #4 Fd. 3/4 I.P.

LINE K DEED = 750 ±' THIS LINE IN DEED
BEARS S 71° E ALONG WITH LINE D.
HOWEVER LINE IS SPECIFICALLY
BETWEEN NW COR. OF LOT #4 +
A POINT NORTH 13.5 CHAINS
FROM SE COR. OF LOT #4.

LINE L DEED = 750 ±'

LINE M DEED = 875 ±'

LINE N SEE ABOVE

LINE O DEED = 281.5 ±'

LINE P DEED = 891.0' THIS LINE SETS
THE BEGINNING OF THE CONCERNED
PROPERTIES.

LINE Q DIST. = 1285.0' CS 58/128
MICHAEL McDOWEL DEC. 1, 1976

LINE R DIST = 1304.58' SAME AS LINE Q

LINE S DIST = 2563.44' SURVEY BY
WEYERHAESER COMP. CS 58/139
FEB 21, 1977. LATER AMMENDED
BY LETTER FROM WEY. COMP.
APRIL 12 1978 TO DOUGLAS
COUNTY SURVEYOR

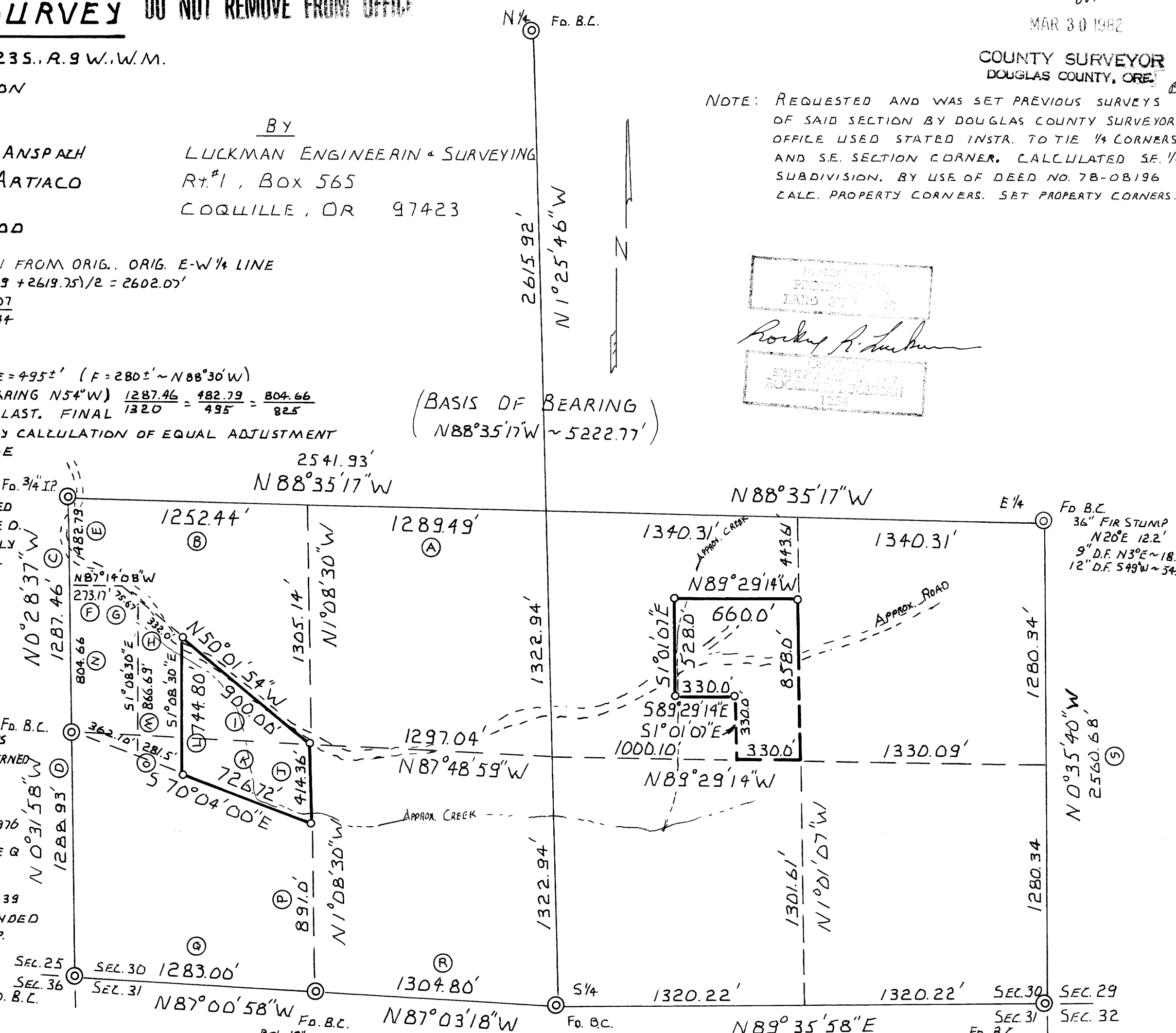
DEED REFENZES 68-10517, 79-11788 Fd. B.C.

LEGEND

MONUMENTS FOUND ⊙
MONUMENTS SET ○ 5/8" REBAR x 30" YELLOW CAP PLS 125+
BASIS OF BEARING FROM RICHARD J. HINTZ #497
CS 58/73. OCT. 15, 1975
USED THEODOLITE + EDM. TO
TRAVERSE LINES
LOCATE PROPERTY COR.
SET PROPERTY COR.

SCALE: 1" = 500'

DATE: JAN. 22, 1982



DOUGLAS COUNTY SURVEYOR
ROCKY R. LUCKMAN
DOUGLAS COUNTY, OREGON

Fd. B.C.
36" FIR STUMP
N 20° E 12.2'
9" D.F. N 3° E ~ 18.8'
12" D.F. S 49° W ~ 34.0'

MAP FILE M 91 - 46